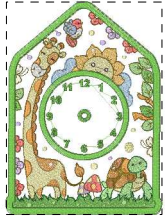
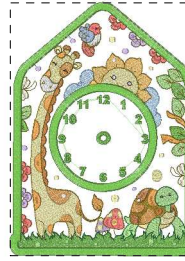


Printed 6/15/2018



- | | |
|----------------------------------|----------------------------------|
| 1. Nile Green (Sul-R:1274) | 19. Butterfly Gold (Sul-R:567) |
| 2. Bright White (Sul-R:1001) | 20. Lavender (Sul-R:1193) |
| 3. (Sul-R:1245) | 21. Dark Peach (Sul-R:1020) |
| 4. Bright White (Sul-R:1001) | 22. Lt. Grass Green (Sul-R:1100) |
| 5. Nile Green (Sul-R:1274) | 23. Primrose (Sul-R:1066) |
| 6. Cornsilk (Sul-R:502) | 24. Cornsilk (Sul-R:502) |
| 7. Heron Blue (Sul-R:1292) | 25. Cream (Sul-R:1022) |
| 8. Pale Powder Blue (Sul-R:1074) | 26. Nile Green (Sul-R:1274) |
| 9. Butterfly Gold (Sul-R:567) | 27. Bright White (Sul-R:1001) |
| 10. Lavender (Sul-R:1193) | 28. Nile Green (Sul-R:1274) |
| 11. Dark Peach (Sul-R:1020) | 29. (Sul-R:1245) |
| 12. Lt. Grass Green (Sul-R:1100) | 30. Black Cherry (Sul-R:1183) |
| 13. Primrose (Sul-R:1066) | 31. Baby Blue (Sul-R:1028) |
| 14. Bright White (Sul-R:1001) | 32. Xmas Green (Sul-R:1051) |
| 15. Nile Green (Sul-R:1274) | 33. Nile Green (Sul-R:1274) |
| 16. Bright White (Sul-R:1001) | 34. Bright White (Sul-R:1001) |
| 17. Cornsilk (Sul-R:502) | 35. Nile Green (Sul-R:1274) |
| 18. Tan (Sul-R:1126) | |

Nursery Clock 6x10.dst
5.84x7.96 inches; 43,215 stitches
35 thread changes; 16 colors



- | | |
|----------------------------------|----------------------------------|
| 1. Nile Green (Sul-R:1274) | 19. Butterfly Gold (Sul-R:567) |
| 2. Bright White (Sul-R:1001) | 20. Lavender (Sul-R:1193) |
| 3. (Sul-R:1245) | 21. Dark Peach (Sul-R:1020) |
| 4. Bright White (Sul-R:1001) | 22. Lt. Grass Green (Sul-R:1100) |
| 5. Nile Green (Sul-R:1274) | 23. Primrose (Sul-R:1066) |
| 6. Cornsilk (Sul-R:502) | 24. Cornsilk (Sul-R:502) |
| 7. Heron Blue (Sul-R:1292) | 25. Cream (Sul-R:1022) |
| 8. Pale Powder Blue (Sul-R:1074) | 26. Nile Green (Sul-R:1274) |
| 9. Butterfly Gold (Sul-R:567) | 27. Bright White (Sul-R:1001) |
| 10. Lavender (Sul-R:1193) | 28. Nile Green (Sul-R:1274) |
| 11. Dark Peach (Sul-R:1020) | 29. (Sul-R:1245) |
| 12. Lt. Grass Green (Sul-R:1100) | 30. Black Cherry (Sul-R:1183) |
| 13. Primrose (Sul-R:1066) | 31. Baby Blue (Sul-R:1028) |
| 14. Bright White (Sul-R:1001) | 32. Xmas Green (Sul-R:1051) |
| 15. Nile Green (Sul-R:1274) | 33. Nile Green (Sul-R:1274) |
| 16. Bright White (Sul-R:1001) | 34. Bright White (Sul-R:1001) |
| 17. Cornsilk (Sul-R:502) | 35. Nile Green (Sul-R:1274) |
| 18. Tan (Sul-R:1126) | |

Nursery Clock 8x12.dst
6.94x9.46 inches; 53,324 stitches
35 thread changes; 16 colors