

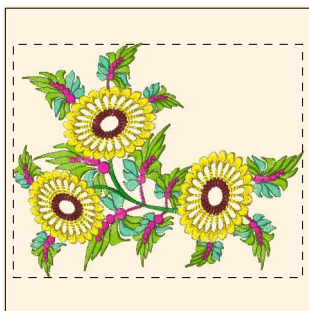
- 1. Cornflower Blue (Sul-R:1249)
- 2. Coral Reef (Sul-R:1258)
- 3. Lemon Yellow (Sul-R:1067)
- 4. Coral Reef (Sul-R:1258)
- 5. Avocado (Sul-R:1177)
- 6. Dk. Willow Green (Sul-R:1280)
- 7. (Sul-R:1260)
- 8. Lemon Yellow (Sul-R:1067)
- 9. Cornflower Blue (Sul-R:1249)
- 10. Duck Wing Blue (Sul-R:1250)
- 11. Spice (Sul-R:562)
- 12. Tan (Sul-R:1126)

**Calceolaria 6x10.dst**  
5.25x10.01 inches; 32,133 stitches  
12 thread changes; 9 colors



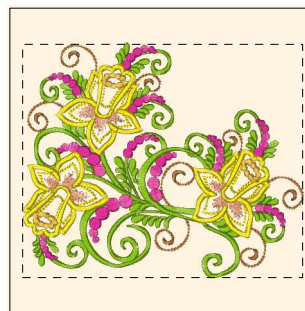
- 1. Hot Pink (Sul-R:1109)
- 2. Coral Reef (Sul-R:1258)
- 3. Dk. Willow Green (Sul-R:1280)
- 4. Ivy Green (Sul-R:1277)
- 5. Xmas Green (Sul-R:1051)
- 6. Mimosa Yellow (Sul-R:1187)
- 7. Tan (Sul-R:1126)
- 8. Orchid (Sul-R:1080)
- 9. Med. Rose (Sul-R:1231)
- 10. Hot Pink (Sul-R:1109)
- 11. Dk. Mauve (Sul-R:1119)

**Chrysanthemum 6x10.dst**  
6.00x5.83 inches; 24,244 stitches  
11 thread changes; 10 colors



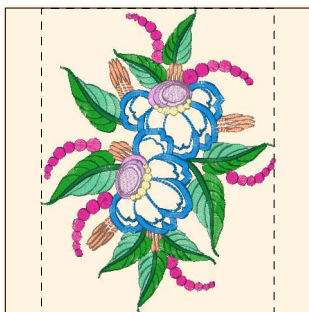
- 1. Yellow (Sul-R:1023)
- 2. Coral Reef (Sul-R:1258)
- 3. Avocado (Sul-R:1177)
- 4. Dk. Willow Green (Sul-R:1280)
- 5. Avocado (Sul-R:1177)
- 6. Med. Rose (Sul-R:1231)
- 7. Ivy Green (Sul-R:1277)
- 8. Yellow (Sul-R:1023)
- 9. Wine (Sul-R:1312)

**Cineraria 6x10.dst**  
7.45x6.01 inches; 27,357 stitches  
9 thread changes; 7 colors



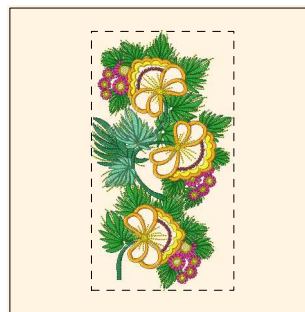
- 1. Mimosa Yellow (Sul-R:1187)
- 2. Coral Reef (Sul-R:1258)
- 3. Tan (Sul-R:1126)
- 4. Avocado (Sul-R:1177)
- 5. Avocado (Sul-R:1177)
- 6. Med. Rose (Sul-R:1231)
- 7. Avocado (Sul-R:1177)
- 8. Spice (Sul-R:562)
- 9. Mimosa Yellow (Sul-R:1187)
- 10. (Sul-R:1260)

**Daffodil 6x10.dst**  
7.21x6.01 inches; 23,519 stitches  
10 thread changes; 8 colors



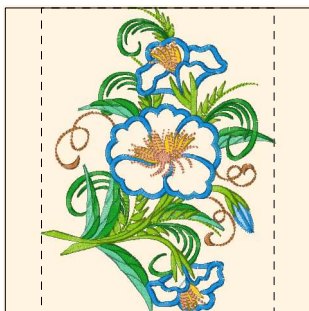
- 1. Sapphire (Sul-R:1534)
- 2. Coral Reef (Sul-R:1258)
- 3. Med. Rose (Sul-R:1231)
- 4. Dk. Willow Green (Sul-R:1280)
- 5. Ivy Green (Sul-R:1277)
- 6. Xmas Green (Sul-R:1051)
- 7. Spice (Sul-R:562)
- 8. Sapphire (Sul-R:1534)
- 9. Bright Pink (Sul-R:1224)
- 10. Orchid (Sul-R:1080)
- 11. Pink (Sul-R:1121)
- 12. Primrose (Sul-R:1066)

**Dahlia 6x10.dst**  
6.00x7.85 inches; 22,799 stitches  
12 thread changes; 11 colors



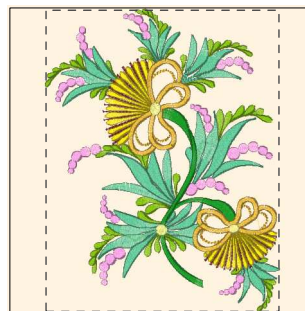
- 1. Orange Yellow (Sul-R:1065)
- 2. Coral Reef (Sul-R:1258)
- 3. Pastel Yellow (Sul-R:1135)
- 4. Avocado (Sul-R:1177)
- 5. Med. Rose (Sul-R:1231)
- 6. Mimosa Yellow (Sul-R:1187)
- 7. Wine (Sul-R:1312)
- 8. Mimosa Yellow (Sul-R:1187)
- 9. Ivy Green (Sul-R:1277)
- 10. Xmas Green (Sul-R:1051)
- 11. Dk. Willow Green (Sul-R:1280)
- 12. Orange Yellow (Sul-R:1065)
- 13. Yellow (Sul-R:1023)
- 14. Med. Rose (Sul-R:1231)
- 15. Mimosa Yellow (Sul-R:1187)

**Fan Flower 6x10.dst**  
5.50x10.00 inches; 48,075 stitches  
15 thread changes; 11 colors



- 1. Sapphire (Sul-R:1534)
- 2. Coral Reef (Sul-R:1258)
- 3. Tan (Sul-R:1126)
- 4. Ivy Green (Sul-R:1277)
- 5. Dk. Willow Green (Sul-R:1280)
- 6. Ivy Green (Sul-R:1277)
- 7. Avocado (Sul-R:1177)
- 8. Ivy Green (Sul-R:1277)
- 9. Sapphire (Sul-R:1534)
- 10. Cornflower Blue (Sul-R:1249)
- 11. Sapphire (Sul-R:1534)
- 12. Avocado (Sul-R:1177)
- 13. Sapphire (Sul-R:1534)
- 14. Goldenrod (Sul-R:1024)
- 15. Spice (Sul-R:562)
- 16. Sapphire (Sul-R:1534)

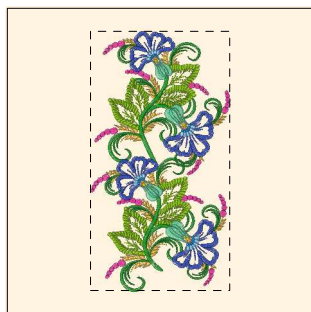
**Morning Glory 6x10.dst**  
6.00x7.86 inches; 24,326 stitches  
16 thread changes; 9 colors



- 1. (Sul-R:1260)
- 2. Coral Reef (Sul-R:1258)
- 3. Bright Pink (Sul-R:1224)
- 4. Avocado (Sul-R:1177)
- 5. Avocado (Sul-R:1177)
- 6. Dk. Willow Green (Sul-R:1280)
- 7. Wine (Sul-R:1312)
- 8. Mimosa Yellow (Sul-R:1187)
- 9. Ivy Green (Sul-R:1277)
- 10. (Sul-R:1260)
- 11. Lemon Yellow (Sul-R:1067)

**Peacock Flower 6x10.dst**  
6.00x7.76 inches; 24,044 stitches  
11 thread changes; 10 colors

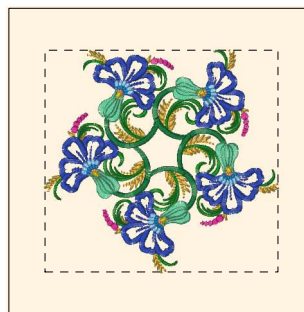
Printed 1/30/2014



- 1. Avocado (Sul-R:1177)
- 2. Coral Reef (Sul-R:1258)
- 3. Cobalt Blue (Sul-R:526)
- 4. Coral Reef (Sul-R:1258)
- 5. Med. Rose (Sul-R:1231)
- 6. (Sul-R:1260)
- 7. Ivy Green (Sul-R:1277)
- 8. Avocado (Sul-R:1177)
- 9. Avocado (Sul-R:1177)
- 10. Ivy Green (Sul-R:1277)
- 11. Cobalt Blue (Sul-R:526)
- 12. Cornflower Blue (Sul-R:1249)
- 13. Sapphire (Sul-R:1534)
- 14. Spice (Sul-R:562)
- 15. Yellow (Sul-R:1023)
- 16. Dk. Willow Green (Sul-R:1280)

**Wishbone Flower 6x10.dst**

5.38x10.01 inches; 39,803 stitches  
16 thread changes; 12 colors



- 1. Cobalt Blue (Sul-R:526)
- 2. Coral Reef (Sul-R:1258)
- 3. Med. Rose (Sul-R:1231)
- 4. (Sul-R:1260)
- 5. Ivy Green (Sul-R:1277)
- 6. Xmas Green (Sul-R:1051)
- 7. Cobalt Blue (Sul-R:526)
- 8. Cornflower Blue (Sul-R:1249)
- 9. Sapphire (Sul-R:1534)
- 10. Spice (Sul-R:562)
- 11. Yellow (Sul-R:1023)
- 12. Dk. Willow Green (Sul-R:1280)

**Wishbone Star 6x10.dst**

6.00x5.72 inches; 22,274 stitches  
12 thread changes; 11 colors