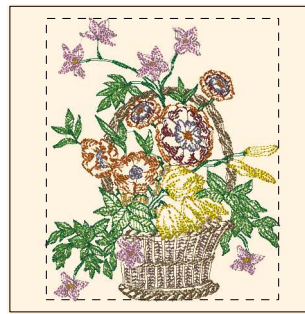


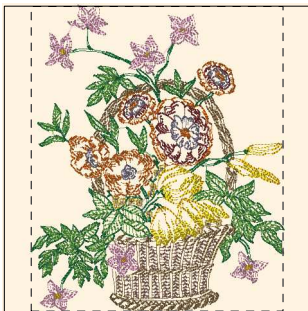
- 1. Goldenrod (Sul-R:1024)
- 2. Mimosa Yellow (Sul-R:1187)
- 3. Cinnamon (Sul-R:568)
- 4. Deep Mauve (Sul-R:1237)
- 5. Xmas Green (Sul-R:1051)
- 6. Nile Green (Sul-R:1274)
- 7. Burnt Toast (Sul-R:1265)
- 8. (Sul-R:1269)
- 9. Sterling (Sul-R:1295)
- 10. Mauve (Sul-R:1117)

Basket_of_spring_01-5x7.dst
5.00x6.04 inches; 28,090 stitches
10 thread changes; 10 colors



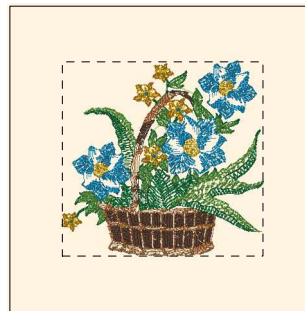
- 1. Goldenrod (Sul-R:1024)
- 2. Mimosa Yellow (Sul-R:1187)
- 3. Cinnamon (Sul-R:568)
- 4. Deep Mauve (Sul-R:1237)
- 5. Xmas Green (Sul-R:1051)
- 6. Nile Green (Sul-R:1274)
- 7. Burnt Toast (Sul-R:1265)
- 8. (Sul-R:1269)
- 9. Sterling (Sul-R:1295)
- 10. Mauve (Sul-R:1117)

Basket_of_spring_01-6x10.dst
5.99x7.24 inches; 33,140 stitches
10 thread changes; 10 colors



- 1. Goldenrod (Sul-R:1024)
- 2. Mimosa Yellow (Sul-R:1187)
- 3. Cinnamon (Sul-R:568)
- 4. Deep Mauve (Sul-R:1237)
- 5. Xmas Green (Sul-R:1051)
- 6. Nile Green (Sul-R:1274)
- 7. Burnt Toast (Sul-R:1265)
- 8. (Sul-R:1269)
- 9. Sterling (Sul-R:1295)
- 10. Mauve (Sul-R:1117)

Basket_of_spring_01-8x8.dst
6.49x7.85 inches; 35,780 stitches
10 thread changes; 10 colors



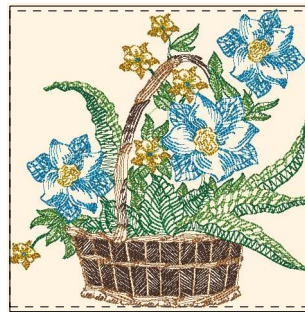
- 1. Goldenrod (Sul-R:1024)
- 2. Sunflower Gold (Sul-R:1333)
- 3. Sable Brown (Sul-R:1186)
- 4. Tan (Sul-R:1126)
- 5. Xmas Green (Sul-R:1051)
- 6. Nile Green (Sul-R:1274)
- 7. Garden Green (Sul-R:569)
- 8. Duck Wing Blue (Sul-R:1250)

Basket_of_spring_02-5x7.dst
5.17x5.00 inches; 28,031 stitches
8 thread changes; 8 colors



- 1. Goldenrod (Sul-R:1024)
- 2. Sunflower Gold (Sul-R:1333)
- 3. Sable Brown (Sul-R:1186)
- 4. Tan (Sul-R:1126)
- 5. Xmas Green (Sul-R:1051)
- 6. Nile Green (Sul-R:1274)
- 7. Garden Green (Sul-R:569)
- 8. Duck Wing Blue (Sul-R:1250)

Basket_of_spring_02-6x10.dst
6.21x6.00 inches; 33,236 stitches
8 thread changes; 8 colors



- 1. Goldenrod (Sul-R:1024)
- 2. Sunflower Gold (Sul-R:1333)
- 3. Sable Brown (Sul-R:1186)
- 4. Tan (Sul-R:1126)
- 5. Xmas Green (Sul-R:1051)
- 6. Nile Green (Sul-R:1274)
- 7. Garden Green (Sul-R:569)
- 8. Duck Wing Blue (Sul-R:1250)

Basket_of_spring_02-8x8.dst
7.87x7.62 inches; 40,750 stitches
8 thread changes; 8 colors



- 1. Goldenrod (Sul-R:1024)
- 2. Mimosa Yellow (Sul-R:1187)
- 3. Xmas Green (Sul-R:1051)
- 4. Nile Green (Sul-R:1274)
- 5. Burnt Toast (Sul-R:1265)
- 6. Garden Green (Sul-R:569)
- 7. Dk. Ecru (Sul-R:1128)
- 8. Coral (Sul-R:1154)
- 9. Mauve (Sul-R:1117)

Basket_of_spring_03-5x7.dst
5.32x5.00 inches; 26,762 stitches
9 thread changes; 9 colors



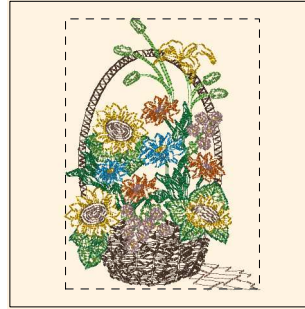
- 1. Goldenrod (Sul-R:1024)
- 2. Mimosa Yellow (Sul-R:1187)
- 3. Xmas Green (Sul-R:1051)
- 4. Nile Green (Sul-R:1274)
- 5. Burnt Toast (Sul-R:1265)
- 6. Garden Green (Sul-R:569)
- 7. Dk. Ecru (Sul-R:1128)
- 8. Coral (Sul-R:1154)
- 9. Mauve (Sul-R:1117)

Basket_of_spring_03-6x10.dst
6.32x6.00 inches; 31,473 stitches
9 thread changes; 9 colors



- 1. Goldenrod (Sul-R:1024)
- 2. Mimosa Yellow (Sul-R:1187)
- 3. Xmas Green (Sul-R:1051)
- 4. Nile Green (Sul-R:1274)
- 5. Burnt Toast (Sul-R:1265)
- 6. Garden Green (Sul-R:569)
- 7. Dk. Ecru (Sul-R:1128)
- 8. Coral (Sul-R:1154)
- 9. Mauve (Sul-R:1117)

Basket_of_spring_03-8x8.dst
7.85x7.42 inches; 37,371 stitches
9 thread changes; 9 colors



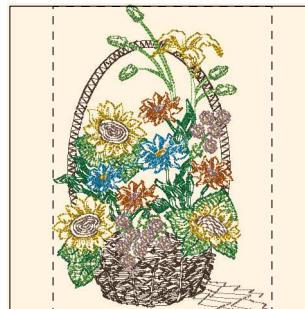
- 1. Goldenrod (Sul-R:1024)
- 2. Cinnamon (Sul-R:568)
- 3. Sable Brown (Sul-R:1186)
- 4. Xmas Green (Sul-R:1051)
- 5. Nile Green (Sul-R:1274)
- 6. Burnt Toast (Sul-R:1265)
- 7. Garden Green (Sul-R:569)
- 8. (Sul-R:1269)
- 9. Taupe (Sul-R:1213)
- 10. Duck Wing Blue (Sul-R:1250)

Basket_of_spring_04-5x7.dst
5.00x6.96 inches; 26,671 stitches
10 thread changes; 10 colors



- 1. Goldenrod (Sul-R:1024)
- 2. Cinnamon (Sul-R:568)
- 3. Sable Brown (Sul-R:1186)
- 4. Xmas Green (Sul-R:1051)
- 5. Nile Green (Sul-R:1274)
- 6. Burnt Toast (Sul-R:1265)
- 7. Garden Green (Sul-R:569)
- 8. (Sul-R:1269)
- 9. Taupe (Sul-R:1213)
- 10. Duck Wing Blue (Sul-R:1250)

Basket_of_spring_04-6x10.dst
5.98x8.32 inches; 33,335 stitches
10 thread changes; 10 colors



- 1. Goldenrod (Sul-R:1024)
- 2. Cinnamon (Sul-R:568)
- 3. Sable Brown (Sul-R:1186)
- 4. Xmas Green (Sul-R:1051)
- 5. Nile Green (Sul-R:1274)
- 6. Burnt Toast (Sul-R:1265)
- 7. Garden Green (Sul-R:569)
- 8. (Sul-R:1269)
- 9. Taupe (Sul-R:1213)
- 10. Duck Wing Blue (Sul-R:1250)

Basket_of_spring_04-8x8.dst
5.65x7.86 inches; 31,090 stitches
10 thread changes; 10 colors



- 1. Xmas Green (Sul-R:1051)
- 2. Nile Green (Sul-R:1274)
- 3. Burnt Toast (Sul-R:1265)
- 4. Garden Green (Sul-R:569)
- 5. (Sul-R:1269)
- 6. Bittersweet (Sul-R:1313)
- 7. Taupe (Sul-R:1213)

Basket_of_spring_05-5x7.dst
4.99x5.11 inches; 21,838 stitches
7 thread changes; 7 colors



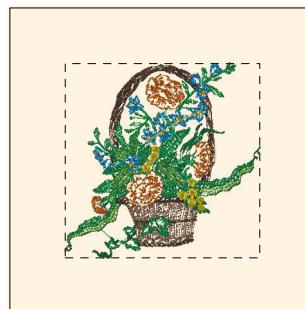
- 1. Xmas Green (Sul-R:1051)
- 2. Nile Green (Sul-R:1274)
- 3. Burnt Toast (Sul-R:1265)
- 4. Garden Green (Sul-R:569)
- 5. (Sul-R:1269)
- 6. Bittersweet (Sul-R:1313)
- 7. Taupe (Sul-R:1213)

Basket_of_spring_05-6x10.dst
6.00x6.13 inches; 25,780 stitches
7 thread changes; 7 colors



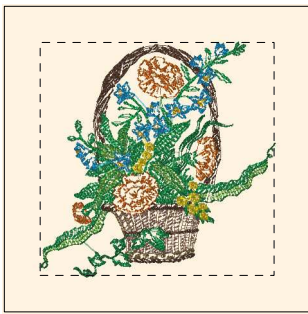
- 1. Xmas Green (Sul-R:1051)
- 2. Nile Green (Sul-R:1274)
- 3. Burnt Toast (Sul-R:1265)
- 4. Garden Green (Sul-R:569)
- 5. (Sul-R:1269)
- 6. Bittersweet (Sul-R:1313)
- 7. Taupe (Sul-R:1213)

Basket_of_spring_05-8x8.dst
7.68x7.87 inches; 32,106 stitches
7 thread changes; 7 colors



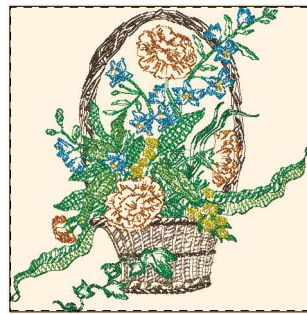
- 1. Cinnamon (Sul-R:568)
- 2. Sable Brown (Sul-R:1186)
- 3. Xmas Green (Sul-R:1051)
- 4. Nile Green (Sul-R:1274)
- 5. Burnt Toast (Sul-R:1265)
- 6. Garden Green (Sul-R:569)
- 7. Bright Green (Sul-R:1278)
- 8. (Sul-R:1269)
- 9. Mimosa Yellow (Sul-R:1187)
- 10. Duck Wing Blue (Sul-R:1250)
- 11. Goldenrod (Sul-R:1024)

Basket_of_spring_06-5x7.dst
5.01x5.00 inches; 23,655 stitches
11 thread changes; 11 colors



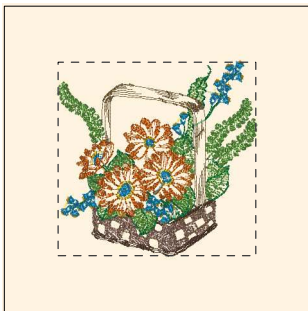
- 1. Cinnamon (Sul-R:568)
- 2. Sable Brown (Sul-R:1186)
- 3. Xmas Green (Sul-R:1051)
- 4. Nile Green (Sul-R:1274)
- 5. Burnt Toast (Sul-R:1265)
- 6. Garden Green (Sul-R:569)
- 7. Bright Green (Sul-R:1278)
- 8. (Sul-R:1269)
- 9. Mimosa Yellow (Sul-R:1187)
- 10. Duck Wing Blue (Sul-R:1250)
- 11. Goldenrod (Sul-R:1024)

Basket_of_spring_06-6x10.dst
6.03x6.00 inches; 28,214 stitches
11 thread changes; 11 colors



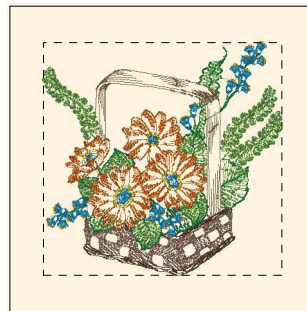
- 1. Goldenrod (Sul-R:1024)
- 2. Cinnamon (Sul-R:568)
- 3. Sable Brown (Sul-R:1186)
- 4. Xmas Green (Sul-R:1051)
- 5. Nile Green (Sul-R:1274)
- 6. Burnt Toast (Sul-R:1265)
- 7. Garden Green (Sul-R:569)
- 8. Bright Green (Sul-R:1278)
- 9. (Sul-R:1269)
- 10. Mimosa Yellow (Sul-R:1187)
- 11. Duck Wing Blue (Sul-R:1250)

Basket_of_spring_06-8x8.dst
7.84x7.81 inches; 35,362 stitches
11 thread changes; 11 colors



- 1. Goldenrod (Sul-R:1024)
- 2. Cinnamon (Sul-R:568)
- 3. Sable Brown (Sul-R:1186)
- 4. Nile Green (Sul-R:1274)
- 5. Burnt Toast (Sul-R:1265)
- 6. Garden Green (Sul-R:569)
- 7. (Sul-R:1269)
- 8. Duck Wing Blue (Sul-R:1250)

Basket_of_spring_07-5x7.dst
5.10x4.99 inches; 22,045 stitches
8 thread changes; 8 colors



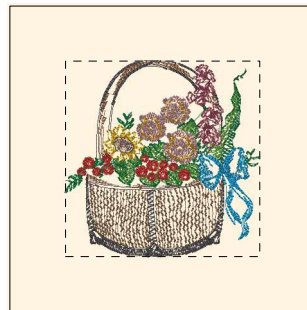
- 1. Goldenrod (Sul-R:1024)
- 2. Cinnamon (Sul-R:568)
- 3. Sable Brown (Sul-R:1186)
- 4. Nile Green (Sul-R:1274)
- 5. Burnt Toast (Sul-R:1265)
- 6. Garden Green (Sul-R:569)
- 7. (Sul-R:1269)
- 8. Duck Wing Blue (Sul-R:1250)

Basket_of_spring_07-6x10.dst
6.14x5.99 inches; 26,632 stitches
8 thread changes; 8 colors



- 1. Goldenrod (Sul-R:1024)
- 2. Cinnamon (Sul-R:568)
- 3. Sable Brown (Sul-R:1186)
- 4. Nile Green (Sul-R:1274)
- 5. Burnt Toast (Sul-R:1265)
- 6. Garden Green (Sul-R:569)
- 7. (Sul-R:1269)
- 8. Duck Wing Blue (Sul-R:1250)

Basket_of_spring_07-8x8.dst
7.87x7.65 inches; 34,542 stitches
8 thread changes; 8 colors



- 1. Goldenrod (Sul-R:1024)
- 2. Sunflower Gold (Sul-R:1333)
- 3. Poppy (Sul-R:1317)
- 4. Xmas Green (Sul-R:1051)
- 5. Nile Green (Sul-R:1274)
- 6. (Sul-R:1241)
- 7. Burnt Toast (Sul-R:1265)
- 8. Garden Green (Sul-R:569)
- 9. Toast (Sul-R:1266)
- 10. (Sul-R:1269)
- 11. Burgundy (Sul-R:1034)
- 12. Taupe (Sul-R:1213)
- 13. Duck Wing Blue (Sul-R:1250)

Basket_of_spring_08-5x7.dst
5.00x5.03 inches; 24,219 stitches
13 thread changes; 13 colors



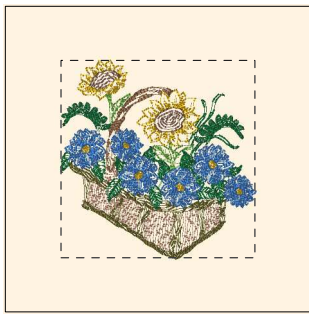
- 1. Goldenrod (Sul-R:1024)
- 2. Sunflower Gold (Sul-R:1333)
- 3. Poppy (Sul-R:1317)
- 4. Xmas Green (Sul-R:1051)
- 5. Nile Green (Sul-R:1274)
- 6. (Sul-R:1241)
- 7. Burnt Toast (Sul-R:1265)
- 8. Garden Green (Sul-R:569)
- 9. Toast (Sul-R:1266)
- 10. (Sul-R:1269)
- 11. Burgundy (Sul-R:1034)
- 12. Taupe (Sul-R:1213)
- 13. Duck Wing Blue (Sul-R:1250)

Basket_of_spring_08-6x10.dst
6.00x6.04 inches; 30,262 stitches
13 thread changes; 13 colors



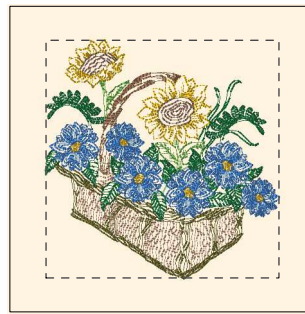
- 1. Goldenrod (Sul-R:1024)
- 2. Sunflower Gold (Sul-R:1333)
- 3. Poppy (Sul-R:1317)
- 4. Xmas Green (Sul-R:1051)
- 5. Nile Green (Sul-R:1274)
- 6. (Sul-R:1241)
- 7. Burnt Toast (Sul-R:1265)
- 8. Garden Green (Sul-R:569)
- 9. Toast (Sul-R:1266)
- 10. (Sul-R:1269)
- 11. Burgundy (Sul-R:1034)
- 12. Taupe (Sul-R:1213)
- 13. Duck Wing Blue (Sul-R:1250)

Basket_of_spring_08-8x8.dst
7.80x7.86 inches; 38,276 stitches
13 thread changes; 13 colors



- 1. Goldenrod (Sul-R:1024)
- 2. Nile Green (Sul-R:1274)
- 3. Xmas Green (Sul-R:1051)
- 4. Garden Green (Sul-R:569)
- 5. Xmas Green (Sul-R:1051)
- 6. Drab Green (Sul-R:1228)
- 7. Burnt Toast (Sul-R:1265)
- 8. Toast (Sul-R:1266)
- 9. (Sul-R:1269)
- 10. Dk. Ecru (Sul-R:1128)
- 11. Royal Blue (Sul-R:1076)

Basket_of_spring_09-5x7.dst
5.00x5.09 inches; 22,545 stitches
11 thread changes; 10 colors



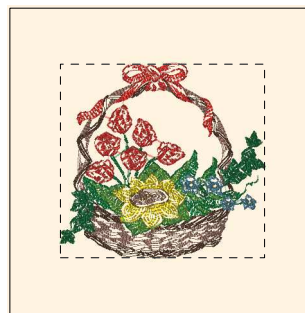
- 1. Goldenrod (Sul-R:1024)
- 2. Nile Green (Sul-R:1274)
- 3. Xmas Green (Sul-R:1051)
- 4. Garden Green (Sul-R:569)
- 5. Xmas Green (Sul-R:1051)
- 6. Drab Green (Sul-R:1228)
- 7. Burnt Toast (Sul-R:1265)
- 8. Toast (Sul-R:1266)
- 9. (Sul-R:1269)
- 10. Dk. Ecru (Sul-R:1128)
- 11. Royal Blue (Sul-R:1076)

Basket_of_spring_09-6x10.dst
6.00x6.12 inches; 27,149 stitches
11 thread changes; 10 colors



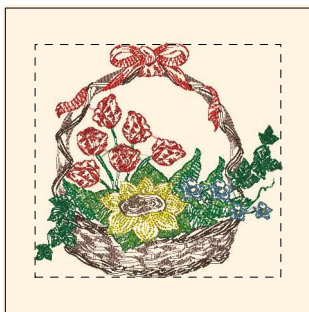
- 1. Goldenrod (Sul-R:1024)
- 2. Nile Green (Sul-R:1274)
- 3. Xmas Green (Sul-R:1051)
- 4. Garden Green (Sul-R:569)
- 5. Xmas Green (Sul-R:1051)
- 6. Drab Green (Sul-R:1228)
- 7. Burnt Toast (Sul-R:1265)
- 8. Toast (Sul-R:1266)
- 9. (Sul-R:1269)
- 10. Dk. Ecru (Sul-R:1128)
- 11. Royal Blue (Sul-R:1076)

Basket_of_spring_09-8x8.dst
7.74x7.87 inches; 34,323 stitches
11 thread changes; 10 colors



- 1. Goldenrod (Sul-R:1024)
- 2. Mimosa Yellow (Sul-R:1187)
- 3. Poppy (Sul-R:1317)
- 4. Sable Brown (Sul-R:1186)
- 5. Xmas Green (Sul-R:1051)
- 6. Nile Green (Sul-R:1274)
- 7. Burnt Toast (Sul-R:1265)
- 8. Garden Green (Sul-R:569)
- 9. (Sul-R:1269)
- 10. Med. Weathered Blue (Sul-R:1172)

Basket_of_spring_10-5x7.dst
5.26x4.99 inches; 25,213 stitches
10 thread changes; 10 colors



- 1. Goldenrod (Sul-R:1024)
- 2. Mimosa Yellow (Sul-R:1187)
- 3. Poppy (Sul-R:1317)
- 4. Sable Brown (Sul-R:1186)
- 5. Xmas Green (Sul-R:1051)
- 6. Nile Green (Sul-R:1274)
- 7. Burnt Toast (Sul-R:1265)
- 8. Garden Green (Sul-R:569)
- 9. (Sul-R:1269)
- 10. Med. Weathered Blue (Sul-R:1172)

Basket_of_spring_10-6x10.dst
6.33x5.99 inches; 29,678 stitches
10 thread changes; 10 colors



- 1. Goldenrod (Sul-R:1024)
- 2. Mimosa Yellow (Sul-R:1187)
- 3. Poppy (Sul-R:1317)
- 4. Sable Brown (Sul-R:1186)
- 5. Xmas Green (Sul-R:1051)
- 6. Nile Green (Sul-R:1274)
- 7. Burnt Toast (Sul-R:1265)
- 8. Garden Green (Sul-R:569)
- 9. (Sul-R:1269)
- 10. Med. Weathered Blue (Sul-R:1172)

Basket_of_spring_10-8x8.dst
7.87x7.49 inches; 35,629 stitches
10 thread changes; 10 colors



- 1. Goldenrod (Sul-R:1024)
- 2. Cinnamon (Sul-R:568)
- 3. Nutmeg (Sul-R:521)
- 4. Xmas Green (Sul-R:1051)
- 5. Nile Green (Sul-R:1274)
- 6. Garden Green (Sul-R:569)
- 7. Pastel Yellow (Sul-R:1135)
- 8. Dk. Ecru (Sul-R:1128)

Basket_of_spring_11-5x7.dst
5.34x4.99 inches; 24,176 stitches
8 thread changes; 8 colors



- 1. Goldenrod (Sul-R:1024)
- 2. Cinnamon (Sul-R:568)
- 3. Nutmeg (Sul-R:521)
- 4. Xmas Green (Sul-R:1051)
- 5. Nile Green (Sul-R:1274)
- 6. Garden Green (Sul-R:569)
- 7. Pastel Yellow (Sul-R:1135)
- 8. Dk. Ecru (Sul-R:1128)

Basket_of_spring_11-6x10.dst
6.37x5.99 inches; 28,547 stitches
8 thread changes; 8 colors



- 1. Goldenrod (Sul-R:1024)
- 2. Cinnamon (Sul-R:568)
- 3. Nutmeg (Sul-R:521)
- 4. Xmas Green (Sul-R:1051)
- 5. Nile Green (Sul-R:1274)
- 6. Garden Green (Sul-R:569)
- 7. Pastel Yellow (Sul-R:1135)
- 8. Dk. Ecru (Sul-R:1128)

Basket_of_spring_11-8x8.dst
7.86x7.39 inches; 34,300 stitches
8 thread changes; 8 colors



- 1. Goldenrod (Sul-R:1024)
- 2. Nile Green (Sul-R:1274)
- 3. Garden Green (Sul-R:569)
- 4. Xmas Green (Sul-R:1051)
- 5. Drab Green (Sul-R:1228)
- 6. Brick (Sul-R:1081)
- 7. Dk. Ecru (Sul-R:1128)
- 8. Med. Purple (Sul-R:1032)
- 9. Mauve (Sul-R:1117)
- 10. Duck Wing Blue (Sul-R:1250)

Basket_of_spring_12-5x7.dst
5.00x5.17 inches; 22,038 stitches
10 thread changes; 10 colors



- 1. Nile Green (Sul-R:1274)
- 2. Garden Green (Sul-R:569)
- 3. Xmas Green (Sul-R:1051)
- 4. Drab Green (Sul-R:1228)
- 5. Brick (Sul-R:1081)
- 6. Dk. Ecru (Sul-R:1128)
- 7. Med. Purple (Sul-R:1032)
- 8. Mauve (Sul-R:1117)
- 9. Duck Wing Blue (Sul-R:1250)
- 10. Goldenrod (Sul-R:1024)

Basket_of_spring_12-6x10.dst
6.00x6.19 inches; 25,685 stitches
10 thread changes; 10 colors



- 1. Nile Green (Sul-R:1274)
- 2. Garden Green (Sul-R:569)
- 3. Xmas Green (Sul-R:1051)
- 4. Drab Green (Sul-R:1228)
- 5. Brick (Sul-R:1081)
- 6. Dk. Ecru (Sul-R:1128)
- 7. Med. Purple (Sul-R:1032)
- 8. Mauve (Sul-R:1117)
- 9. Duck Wing Blue (Sul-R:1250)
- 10. Goldenrod (Sul-R:1024)

Basket_of_spring_12-8x8.dst
7.59x7.87 inches; 30,982 stitches
10 thread changes; 10 colors