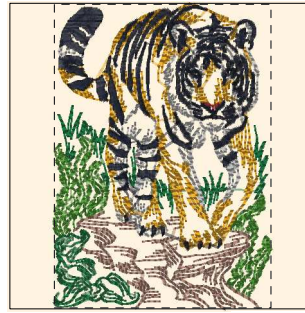




- 1. (Sul-R:1269)
- 2. Grass Green (Sul-R:1049)
- 3. Xmas Green (Sul-R:1051)
- 4. (Sul-R:614)
- 5. Burnt Toast (Sul-R:1265)
- 6. Lt. Putty (Sul-R:1229)
- 7. Maple (Sul-R:1021)
- 8. Dark Brown (Sul-R:1130)

Design01-4x4.dst

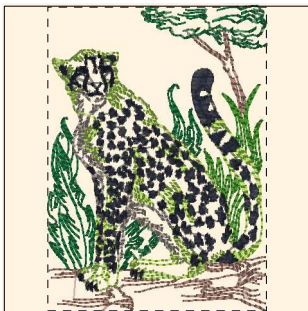
2.78x3.91 inches; 14,077 stitches
8 thread changes; 8 colors



- 1. Xmas Green (Sul-R:1051)
- 2. Grass Green (Sul-R:1049)
- 3. (Sul-R:1269)
- 4. Steel Gray (Sul-R:1011)
- 5. Sunflower Gold (Sul-R:1333)
- 6. Rust (Sul-R:1181)
- 7. Blue Black (Sul-R:1182)

Design02-4x4.dst

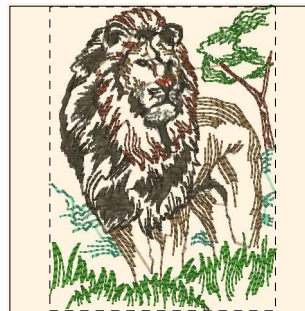
2.80x3.91 inches; 13,856 stitches
7 thread changes; 7 colors



- 1. (Sul-R:1269)
- 2. Xmas Green (Sul-R:1051)
- 3. Grass Green (Sul-R:1049)
- 4. Med. Taupe (Sul-R:1180)
- 5. Deep Chartreuse (Sul-R:1332)
- 6. Blue Black (Sul-R:1182)

Design03-4x4.dst

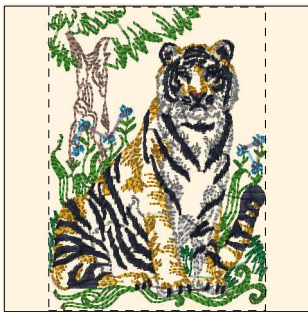
2.82x3.91 inches; 15,622 stitches
6 thread changes; 6 colors



- 1. Dk. Willow Green (Sul-R:1280)
- 2. (Sul-R:614)
- 3. Grass Green (Sul-R:1049)
- 4. Burnt Toast (Sul-R:1265)
- 5. Lt. Putty (Sul-R:1229)
- 6. Maple (Sul-R:1021)
- 7. Dark Brown (Sul-R:1130)

Design04-4x4.dst

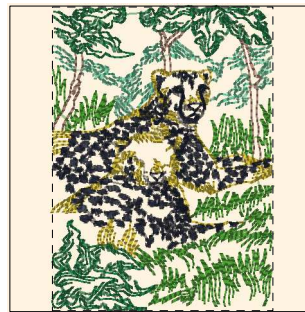
2.91x3.92 inches; 11,476 stitches
7 thread changes; 7 colors



- 1. (Sul-R:1269)
- 2. Grass Green (Sul-R:1049)
- 3. Xmas Green (Sul-R:1051)
- 4. Sunflower Gold (Sul-R:1333)
- 5. Steel Gray (Sul-R:1011)
- 6. Duck Wing Blue (Sul-R:1250)
- 7. Med. Maple (Sul-R:1216)
- 8. Blue Black (Sul-R:1182)

Design05-4x4.dst

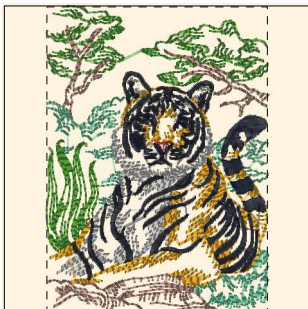
2.80x3.91 inches; 13,487 stitches
8 thread changes; 8 colors



- 1. Dk. Willow Green (Sul-R:1280)
- 2. (Sul-R:1269)
- 3. Grass Green (Sul-R:1049)
- 4. Xmas Green (Sul-R:1051)
- 5. (Sul-R:1244)
- 6. Med. Taupe (Sul-R:1180)
- 7. Blue Black (Sul-R:1182)

Design06-4x4.dst

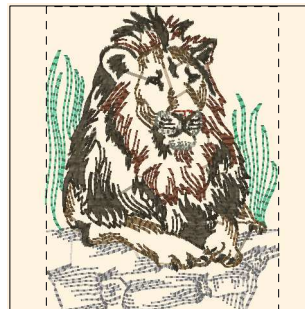
2.84x3.91 inches; 14,856 stitches
7 thread changes; 7 colors



- 1. Dk. Willow Green (Sul-R:1280)
- 2. (Sul-R:1269)
- 3. Grass Green (Sul-R:1049)
- 4. Steel Gray (Sul-R:1011)
- 5. Sunflower Gold (Sul-R:1333)
- 6. Rust (Sul-R:1181)
- 7. Blue Black (Sul-R:1182)

Design07-4x4.dst

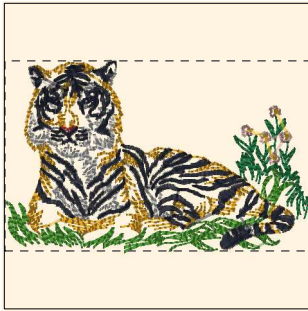
2.84x3.91 inches; 13,489 stitches
7 thread changes; 7 colors



- 1. Steel Gray (Sul-R:1011)
- 2. Dk. Willow Green (Sul-R:1280)
- 3. (Sul-R:614)
- 4. Burnt Toast (Sul-R:1265)
- 5. Lt. Putty (Sul-R:1229)
- 6. Maple (Sul-R:1021)
- 7. Dark Brown (Sul-R:1130)

Design08-4x4.dst

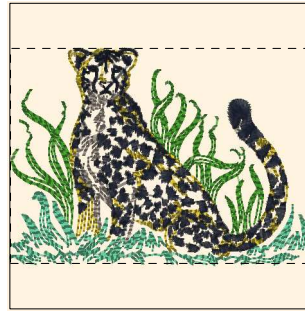
3.00x3.92 inches; 12,211 stitches
7 thread changes; 7 colors



- 1. Xmas Green (Sul-R:1051)
- 2. Steel Gray (Sul-R:1011)
- 3. Sunflower Gold (Sul-R:1333)
- 4. Grass Green (Sul-R:1049)
- 5. Taupe (Sul-R:1213)
- 6. Goldenrod (Sul-R:1024)
- 7. Rust (Sul-R:1181)
- 8. Blue Black (Sul-R:1182)

Design09-4x4.dst

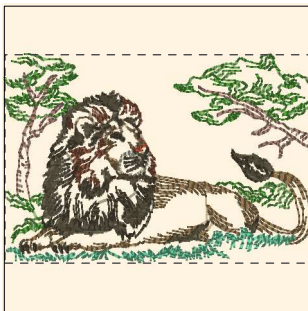
3.92x2.45 inches; 10,110 stitches
8 thread changes; 8 colors



- 1. Grass Green (Sul-R:1049)
- 2. (Sul-R:1244)
- 3. Med. Taupe (Sul-R:1180)
- 4. Dk. Willow Green (Sul-R:1280)
- 5. Blue Black (Sul-R:1182)

Design10-4x4.dst

3.92x2.78 inches; 13,251 stitches
5 thread changes; 5 colors



- 1. (Sul-R:1269)
- 2. Grass Green (Sul-R:1049)
- 3. Burnt Toast (Sul-R:1265)
- 4. (Sul-R:614)
- 5. Lt. Putty (Sul-R:1229)
- 6. Dk. Willow Green (Sul-R:1280)
- 7. Maple (Sul-R:1021)
- 8. Dark Brown (Sul-R:1130)

Design11-4x4.dst

3.92x2.69 inches; 10,743 stitches
8 thread changes; 8 colors



- 1. (Sul-R:1269)
- 2. Grass Green (Sul-R:1049)
- 3. Xmas Green (Sul-R:1051)
- 4. Steel Gray (Sul-R:1011)
- 5. Sunflower Gold (Sul-R:1333)
- 6. Rust (Sul-R:1181)
- 7. Blue Black (Sul-R:1182)

Design12-4x4.dst

3.91x2.81 inches; 17,815 stitches
7 thread changes; 7 colors