

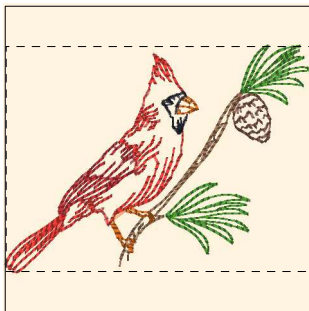
- 1. Toast (Sul-R:1266)
- 2. Grass Green (Sul-R:1049)
- 3. Mink Brown (Sul-R:1267)
- 4. Rust (Sul-R:1181)
- 5. Poppy (Sul-R:1317)
- 6. Cinnamon (Sul-R:568)
- 7. Blue Black (Sul-R:1182)

Cardinals_in_winter_01-4x4.dst
3.92x3.16 inches; 5,426 stitches
7 thread changes; 7 colors



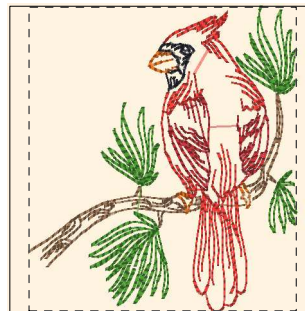
- 1. Toast (Sul-R:1266)
- 2. Grass Green (Sul-R:1049)
- 3. Mink Brown (Sul-R:1267)
- 4. Rust (Sul-R:1181)
- 5. Poppy (Sul-R:1317)
- 6. Cinnamon (Sul-R:568)
- 7. Blue Black (Sul-R:1182)

Cardinals_in_winter_02-4x4.dst
3.91x3.45 inches; 6,487 stitches
7 thread changes; 7 colors



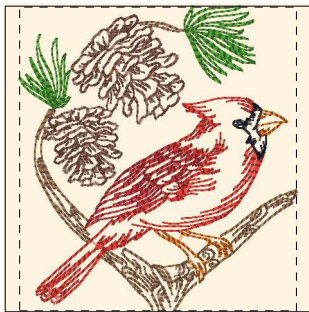
- 1. Toast (Sul-R:1266)
- 2. Grass Green (Sul-R:1049)
- 3. Mink Brown (Sul-R:1267)
- 4. Rust (Sul-R:1181)
- 5. Poppy (Sul-R:1317)
- 6. Cinnamon (Sul-R:568)
- 7. Blue Black (Sul-R:1182)

Cardinals_in_winter_03-4x4.dst
3.91x2.90 inches; 3,416 stitches
7 thread changes; 7 colors



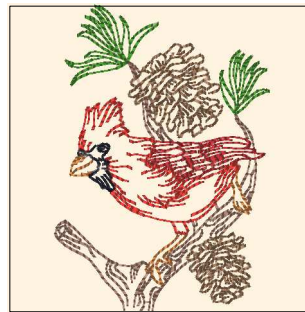
- 1. Toast (Sul-R:1266)
- 2. Grass Green (Sul-R:1049)
- 3. Rust (Sul-R:1181)
- 4. Poppy (Sul-R:1317)
- 5. Cinnamon (Sul-R:568)
- 6. Blue Black (Sul-R:1182)

Cardinals_in_winter_04-4x4.dst
3.44x3.91 inches; 5,753 stitches
6 thread changes; 6 colors



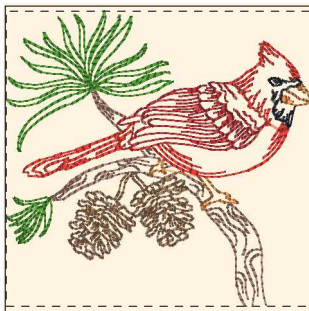
- 1. Toast (Sul-R:1266)
- 2. Grass Green (Sul-R:1049)
- 3. Mink Brown (Sul-R:1267)
- 4. Rust (Sul-R:1181)
- 5. Poppy (Sul-R:1317)
- 6. Cinnamon (Sul-R:568)
- 7. Blue Black (Sul-R:1182)

Cardinals_in_winter_05-4x4.dst
3.57x3.91 inches; 8,337 stitches
7 thread changes; 7 colors



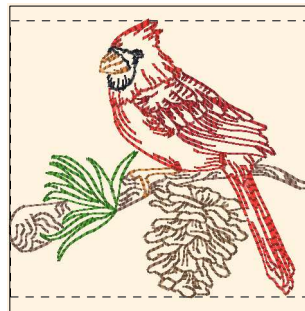
- 1. (Sul-R:1269)
- 2. Grass Green (Sul-R:1049)
- 3. Toast (Sul-R:1266)
- 4. Rust (Sul-R:1181)
- 5. Poppy (Sul-R:1317)
- 6. Autumn Gold (Sul-R:523)
- 7. Blue Black (Sul-R:1182)

Cardinals_in_winter_06-4x4.dst
2.75x3.91 inches; 6,784 stitches
7 thread changes; 7 colors



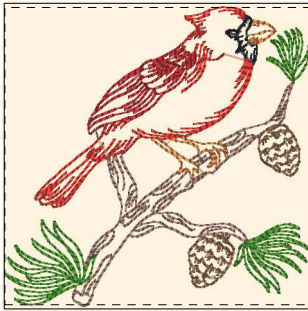
- 1. (Sul-R:1269)
- 2. Grass Green (Sul-R:1049)
- 3. Toast (Sul-R:1266)
- 4. Rust (Sul-R:1181)
- 5. Poppy (Sul-R:1317)
- 6. Autumn Gold (Sul-R:523)
- 7. Blue Black (Sul-R:1182)

Cardinals_in_winter_07-4x4.dst
3.91x3.80 inches; 7,041 stitches
7 thread changes; 7 colors



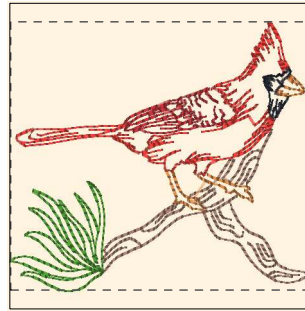
- 1. (Sul-R:1269)
- 2. Grass Green (Sul-R:1049)
- 3. Toast (Sul-R:1266)
- 4. Rust (Sul-R:1181)
- 5. Poppy (Sul-R:1317)
- 6. Autumn Gold (Sul-R:523)
- 7. Blue Black (Sul-R:1182)

Cardinals_in_winter_08-4x4.dst
3.92x3.56 inches; 5,868 stitches
7 thread changes; 7 colors



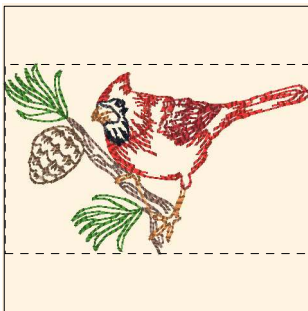
- 1. Blue Black (Sul-R:1182)
- 2. Autumn Gold (Sul-R:523)
- 3. Poppy (Sul-R:1317)
- 4. Rust (Sul-R:1181)
- 5. Toast (Sul-R:1266)
- 6. Grass Green (Sul-R:1049)
- 7. (Sul-R:1269)

Cardinals_in_winter_09-4x4.dst
3.92x3.83 inches; 6,658 stitches
7 thread changes; 7 colors



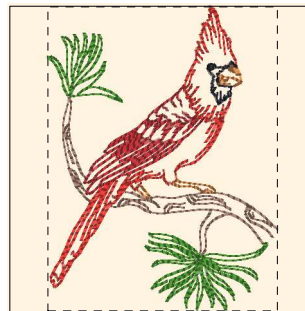
- 1. (Sul-R:1269)
- 2. Grass Green (Sul-R:1049)
- 3. Rust (Sul-R:1181)
- 4. Poppy (Sul-R:1317)
- 5. Autumn Gold (Sul-R:523)
- 6. Blue Black (Sul-R:1182)

Cardinals_in_winter_10-4x4.dst
3.91x3.45 inches; 3,919 stitches
6 thread changes; 6 colors



- 1. (Sul-R:1269)
- 2. Grass Green (Sul-R:1049)
- 3. Toast (Sul-R:1266)
- 4. Rust (Sul-R:1181)
- 5. Poppy (Sul-R:1317)
- 6. Autumn Gold (Sul-R:523)
- 7. Blue Black (Sul-R:1182)

Cardinals_in_winter_11-4x4.dst
3.91x2.44 inches; 4,293 stitches
7 thread changes; 7 colors



- 1. (Sul-R:1269)
- 2. Grass Green (Sul-R:1049)
- 3. Rust (Sul-R:1181)
- 4. Poppy (Sul-R:1317)
- 5. Autumn Gold (Sul-R:523)
- 6. Blue Black (Sul-R:1182)

Cardinals_in_winter_12-4x4.dst
2.96x3.92 inches; 4,583 stitches
6 thread changes; 6 colors