



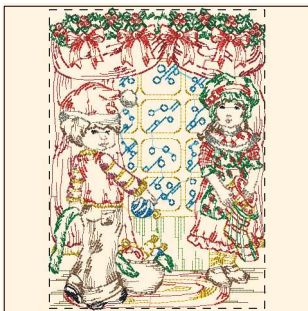
- 1. Blue Black (Sul-R:1182)
- 2. Goldenrod (Sul-R:1024)
- 3. Poppy (Sul-R:1317)
- 4. Rust (Sul-R:1181)
- 5. Nile Green (Sul-R:1274)
- 6. Garden Green (Sul-R:569)
- 7. Xmas Green (Sul-R:1051)
- 8. Drab Green (Sul-R:1228)
- 9. Toast (Sul-R:1266)
- 10. Brick (Sul-R:1081)
- 11. Putty (Sul-R:1508)
- 12. Med. Dk. Ecru (Sul-R:1054)
- 13. (Sul-R:1290)
- 14. Duck Wing Blue (Sul-R:1250)

Deck_the_halls_01-5x7.dst
5.00x6.91 inches; 27,935 stitches
14 thread changes; 14 colors



- 1. Blue Black (Sul-R:1182)
- 2. Goldenrod (Sul-R:1024)
- 3. Poppy (Sul-R:1317)
- 4. Rust (Sul-R:1181)
- 5. Nile Green (Sul-R:1274)
- 6. Garden Green (Sul-R:569)
- 7. Xmas Green (Sul-R:1051)
- 8. Drab Green (Sul-R:1228)
- 9. Toast (Sul-R:1266)
- 10. Brick (Sul-R:1081)
- 11. Putty (Sul-R:1508)
- 12. Med. Dk. Ecru (Sul-R:1054)
- 13. (Sul-R:1290)
- 14. Duck Wing Blue (Sul-R:1250)

Deck_the_halls_01-6x10.dst
5.82x8.08 inches; 32,504 stitches
14 thread changes; 14 colors



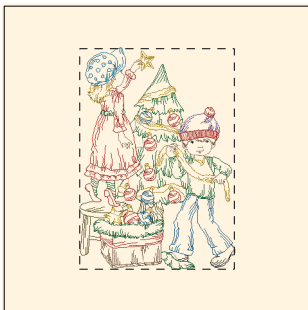
- 1. Blue Black (Sul-R:1182)
- 2. Goldenrod (Sul-R:1024)
- 3. Poppy (Sul-R:1317)
- 4. Rust (Sul-R:1181)
- 5. Nile Green (Sul-R:1274)
- 6. Garden Green (Sul-R:569)
- 7. Xmas Green (Sul-R:1051)
- 8. Drab Green (Sul-R:1228)
- 9. Toast (Sul-R:1266)
- 10. Brick (Sul-R:1081)
- 11. Putty (Sul-R:1508)
- 12. Med. Dk. Ecru (Sul-R:1054)
- 13. (Sul-R:1290)
- 14. Duck Wing Blue (Sul-R:1250)

Deck_the_halls_01-8x8.dst
5.55x7.69 inches; 30,944 stitches
14 thread changes; 14 colors



- 1. Blue Black (Sul-R:1182)
- 2. Goldenrod (Sul-R:1024)
- 3. Poppy (Sul-R:1317)
- 4. Garden Green (Sul-R:569)
- 5. Drab Green (Sul-R:1228)
- 6. Toast (Sul-R:1266)
- 7. Med. Dk. Ecru (Sul-R:1054)
- 8. Med. Purple (Sul-R:1032)
- 9. (Sul-R:1290)
- 10. Duck Wing Blue (Sul-R:1250)

Deck_the_halls_02-5x7.dst
4.90x6.98 inches; 17,330 stitches
10 thread changes; 10 colors



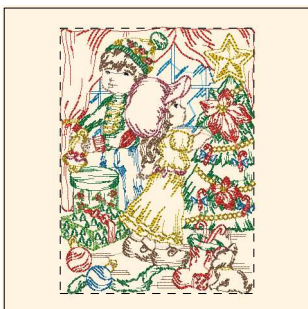
- 1. Blue Black (Sul-R:1182)
- 2. Goldenrod (Sul-R:1024)
- 3. Poppy (Sul-R:1317)
- 4. Garden Green (Sul-R:569)
- 5. Drab Green (Sul-R:1228)
- 6. Toast (Sul-R:1266)
- 7. Med. Dk. Ecru (Sul-R:1054)
- 8. Med. Purple (Sul-R:1032)
- 9. (Sul-R:1290)
- 10. Duck Wing Blue (Sul-R:1250)

Deck_the_halls_02-6x10.dst
5.98x8.52 inches; 20,447 stitches
10 thread changes; 10 colors



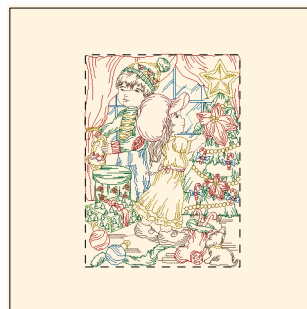
- 1. Blue Black (Sul-R:1182)
- 2. Goldenrod (Sul-R:1024)
- 3. Poppy (Sul-R:1317)
- 4. Garden Green (Sul-R:569)
- 5. Drab Green (Sul-R:1228)
- 6. Toast (Sul-R:1266)
- 7. Med. Dk. Ecru (Sul-R:1054)
- 8. Med. Purple (Sul-R:1032)
- 9. (Sul-R:1290)
- 10. Duck Wing Blue (Sul-R:1250)

Deck_the_halls_02-8x8.dst
5.49x7.85 inches; 19,195 stitches
10 thread changes; 10 colors



- 1. Duck Wing Blue (Sul-R:1250)
- 2. Garden Green (Sul-R:569)
- 3. (Sul-R:1290)
- 4. Spark Gold (Sul-R:1083)
- 5. Poppy (Sul-R:1317)
- 6. Nile Green (Sul-R:1274)
- 7. Toast (Sul-R:1266)
- 8. Brick (Sul-R:1081)
- 9. Med. Dk. Ecru (Sul-R:1054)
- 10. Blue Black (Sul-R:1182)

Deck_the_halls_03-5x7.dst
4.98x6.83 inches; 24,963 stitches
10 thread changes; 10 colors



- 1. Duck Wing Blue (Sul-R:1250)
- 2. Garden Green (Sul-R:569)
- 3. (Sul-R:1290)
- 4. Spark Gold (Sul-R:1083)
- 5. Poppy (Sul-R:1317)
- 6. Nile Green (Sul-R:1274)
- 7. Toast (Sul-R:1266)
- 8. Brick (Sul-R:1081)
- 9. Med. Dk. Ecru (Sul-R:1054)
- 10. Blue Black (Sul-R:1182)

Deck_the_halls_03-6x10.dst
5.98x8.20 inches; 29,524 stitches
10 thread changes; 10 colors



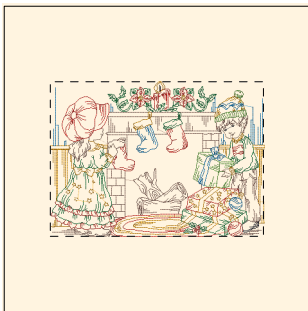
- 1. Duck Wing Blue (Sul-R:1250)
- 2. Garden Green (Sul-R:569)
- 3. (Sul-R:1290)
- 4. Spark Gold (Sul-R:1083)
- 5. Poppy (Sul-R:1317)
- 6. Nile Green (Sul-R:1274)
- 7. Toast (Sul-R:1266)
- 8. Brick (Sul-R:1081)
- 9. Med. Dk. Ecru (Sul-R:1054)
- 10. Blue Black (Sul-R:1182)

Deck_the_halls_03-8x8.dst
5.73x7.86 inches; 28,433 stitches
10 thread changes; 10 colors



- 1. (Sul-R:1269)
- 2. Garden Green (Sul-R:569)
- 3. Poppy (Sul-R:1317)
- 4. Orange Yellow (Sul-R:1065)
- 5. Nile Green (Sul-R:1274)
- 6. Sapphire (Sul-R:1534)
- 7. Med. Dk. Ecru (Sul-R:1054)
- 8. Blue Black (Sul-R:1182)

Deck_the_halls_04-5x7.dst
6.82x4.98 inches; 20,840 stitches
8 thread changes; 8 colors



- 1. (Sul-R:1269)
- 2. Garden Green (Sul-R:569)
- 3. Poppy (Sul-R:1317)
- 4. Orange Yellow (Sul-R:1065)
- 5. Nile Green (Sul-R:1274)
- 6. Sapphire (Sul-R:1534)
- 7. Med. Dk. Ecru (Sul-R:1054)
- 8. Blue Black (Sul-R:1182)

Deck_the_halls_04-6x10.dst
8.23x5.98 inches; 24,548 stitches
8 thread changes; 8 colors



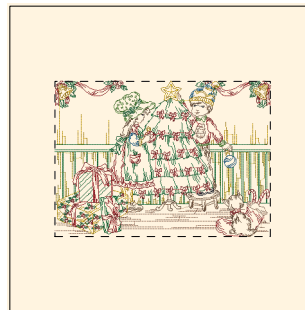
- 1. (Sul-R:1269)
- 2. Garden Green (Sul-R:569)
- 3. Poppy (Sul-R:1317)
- 4. Orange Yellow (Sul-R:1065)
- 5. Nile Green (Sul-R:1274)
- 6. Sapphire (Sul-R:1534)
- 7. Med. Dk. Ecru (Sul-R:1054)
- 8. Blue Black (Sul-R:1182)

Deck_the_halls_04-8x8.dst
7.84x5.67 inches; 23,337 stitches
8 thread changes; 8 colors



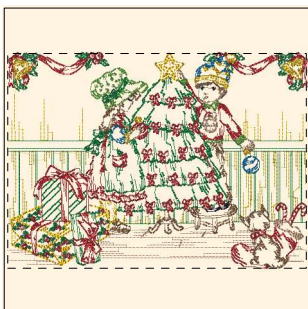
- 1. (Sul-R:1244)
- 2. Garden Green (Sul-R:569)
- 3. Toast (Sul-R:1266)
- 4. Goldenrod (Sul-R:1024)
- 5. Rust (Sul-R:1181)
- 6. Nile Green (Sul-R:1274)
- 7. Dk. Ecru (Sul-R:1128)
- 8. (Sul-R:1290)
- 9. Blue Black (Sul-R:1182)

Deck_the_halls_05-5x7.dst
6.93x5.00 inches; 25,467 stitches
9 thread changes; 9 colors



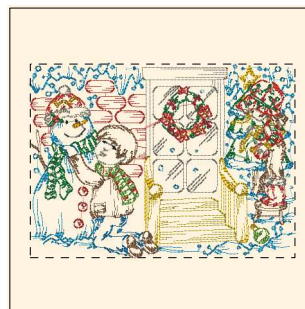
- 1. (Sul-R:1244)
- 2. Garden Green (Sul-R:569)
- 3. Toast (Sul-R:1266)
- 4. Goldenrod (Sul-R:1024)
- 5. Rust (Sul-R:1181)
- 6. Nile Green (Sul-R:1274)
- 7. Dk. Ecru (Sul-R:1128)
- 8. (Sul-R:1290)
- 9. Blue Black (Sul-R:1182)

Deck_the_halls_05-6x10.dst
8.31x6.00 inches; 30,535 stitches
9 thread changes; 9 colors



- 1. (Sul-R:1244)
- 2. Garden Green (Sul-R:569)
- 3. Toast (Sul-R:1266)
- 4. Goldenrod (Sul-R:1024)
- 5. Rust (Sul-R:1181)
- 6. Nile Green (Sul-R:1274)
- 7. Dk. Ecru (Sul-R:1128)
- 8. (Sul-R:1290)
- 9. Blue Black (Sul-R:1182)

Deck_the_halls_05-8x8.dst
7.69x5.54 inches; 28,601 stitches
9 thread changes; 9 colors



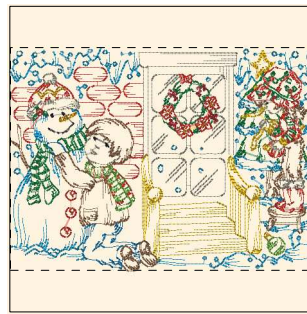
- 1. Duck Wing Blue (Sul-R:1250)
- 2. Putty (Sul-R:1508)
- 3. (Sul-R:1290)
- 4. Toast (Sul-R:1266)
- 5. Goldenrod (Sul-R:1024)
- 6. (Sul-R:1244)
- 7. Garden Green (Sul-R:569)
- 8. Poppy (Sul-R:1317)
- 9. Rust (Sul-R:1181)
- 10. Nile Green (Sul-R:1274)
- 11. Lt. Putty (Sul-R:1229)
- 12. Sunflower Gold (Sul-R:1333)
- 13. Blue Black (Sul-R:1182)

Deck_the_halls_06-5x7.dst
6.81x4.99 inches; 23,084 stitches
13 thread changes; 13 colors



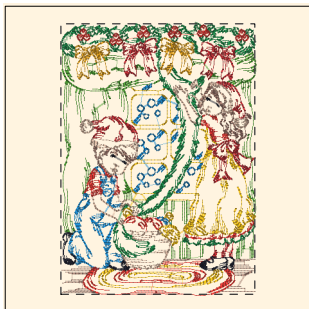
- 1. Duck Wing Blue (Sul-R:1250)
- 2. Putty (Sul-R:1508)
- 3. (Sul-R:1290)
- 4. Toast (Sul-R:1266)
- 5. Goldenrod (Sul-R:1024)
- 6. (Sul-R:1244)
- 7. Garden Green (Sul-R:569)
- 8. Poppy (Sul-R:1317)
- 9. Rust (Sul-R:1181)
- 10. Nile Green (Sul-R:1274)
- 11. Lt. Putty (Sul-R:1229)
- 12. Sunflower Gold (Sul-R:1333)
- 13. Blue Black (Sul-R:1182)

Deck_the_halls_06-6x10.dst
8.18x5.98 inches; 27,539 stitches
13 thread changes; 13 colors



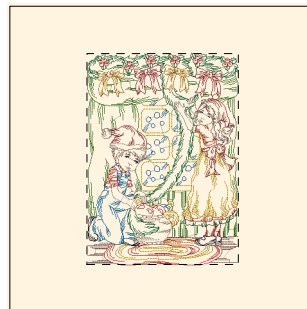
- 1. Duck Wing Blue (Sul-R:1250)
- 2. Putty (Sul-R:1508)
- 3. (Sul-R:1290)
- 4. Toast (Sul-R:1266)
- 5. Goldenrod (Sul-R:1024)
- 6. (Sul-R:1244)
- 7. Garden Green (Sul-R:569)
- 8. Poppy (Sul-R:1317)
- 9. Rust (Sul-R:1181)
- 10. Nile Green (Sul-R:1274)
- 11. Lt. Putty (Sul-R:1229)
- 12. Sunflower Gold (Sul-R:1333)
- 13. Blue Black (Sul-R:1182)

Deck_the_halls_06-8x8.dst
7.84x5.74 inches; 26,527 stitches
13 thread changes; 13 colors



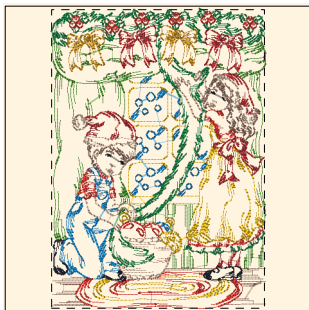
- 1. Grass Green (Sul-R:1049)
- 2. Sapphire (Sul-R:1534)
- 3. Garden Green (Sul-R:569)
- 4. Goldenrod (Sul-R:1024)
- 5. Sunflower Gold (Sul-R:1333)
- 6. Poppy (Sul-R:1317)
- 7. Rust (Sul-R:1181)
- 8. (Sul-R:1269)
- 9. Med. Dk. Ecru (Sul-R:1054)
- 10. Blue Black (Sul-R:1182)

Deck_the_halls_07-5x7.dst
5.00x6.97 inches; 26,679 stitches
10 thread changes; 10 colors



- 1. Grass Green (Sul-R:1049)
- 2. Sapphire (Sul-R:1534)
- 3. Garden Green (Sul-R:569)
- 4. Goldenrod (Sul-R:1024)
- 5. Sunflower Gold (Sul-R:1333)
- 6. Poppy (Sul-R:1317)
- 7. Rust (Sul-R:1181)
- 8. (Sul-R:1269)
- 9. Med. Dk. Ecru (Sul-R:1054)
- 10. Blue Black (Sul-R:1182)

Deck_the_halls_07-6x10.dst
5.84x8.15 inches; 30,439 stitches
10 thread changes; 10 colors



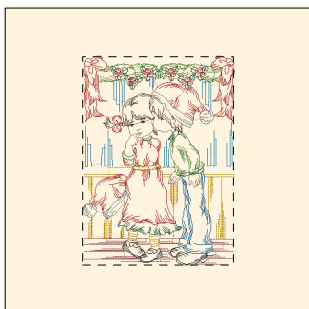
- 1. Grass Green (Sul-R:1049)
- 2. Sapphire (Sul-R:1534)
- 3. Garden Green (Sul-R:569)
- 4. Goldenrod (Sul-R:1024)
- 5. Sunflower Gold (Sul-R:1333)
- 6. Poppy (Sul-R:1317)
- 7. Rust (Sul-R:1181)
- 8. (Sul-R:1269)
- 9. Med. Dk. Ecru (Sul-R:1054)
- 10. Blue Black (Sul-R:1182)

Deck_the_halls_07-8x8.dst
5.49x7.69 inches; 28,990 stitches
10 thread changes; 10 colors



- 1. Duck Wing Blue (Sul-R:1250)
- 2. Goldenrod (Sul-R:1024)
- 3. (Sul-R:1290)
- 4. Dewberry (Sul-R:1304)
- 5. Poppy (Sul-R:1317)
- 6. Nile Green (Sul-R:1274)
- 7. Emerald Green (Sul-R:1079)
- 8. Steel Gray (Sul-R:1011)
- 9. (Sul-R:614)
- 10. Med. Dk. Ecru (Sul-R:1054)
- 11. Blue Black (Sul-R:1182)

Deck_the_halls_08-5x7.dst
5.00x6.88 inches; 19,429 stitches
11 thread changes; 11 colors



- 1. Duck Wing Blue (Sul-R:1250)
- 2. Goldenrod (Sul-R:1024)
- 3. (Sul-R:1290)
- 4. Dewberry (Sul-R:1304)
- 5. Poppy (Sul-R:1317)
- 6. Nile Green (Sul-R:1274)
- 7. Emerald Green (Sul-R:1079)
- 8. Steel Gray (Sul-R:1011)
- 9. (Sul-R:614)
- 10. Med. Dk. Ecru (Sul-R:1054)
- 11. Blue Black (Sul-R:1182)

Deck_the_halls_08-6x10.dst
5.83x8.04 inches; 22,306 stitches
11 thread changes; 11 colors



- 1. Duck Wing Blue (Sul-R:1250)
- 2. Goldenrod (Sul-R:1024)
- 3. (Sul-R:1290)
- 4. Dewberry (Sul-R:1304)
- 5. Poppy (Sul-R:1317)
- 6. Nile Green (Sul-R:1274)
- 7. Emerald Green (Sul-R:1079)
- 8. Steel Gray (Sul-R:1011)
- 9. (Sul-R:614)
- 10. Med. Dk. Ecru (Sul-R:1054)
- 11. Blue Black (Sul-R:1182)

Deck_the_halls_08-8x8.dst
5.60x7.69 inches; 21,506 stitches
11 thread changes; 11 colors



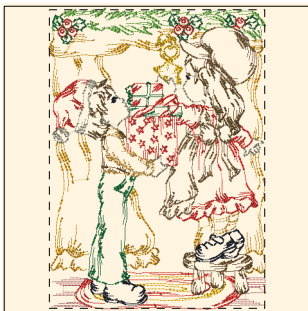
- 1. Sunflower Gold (Sul-R:1333)
- 2. Poppy (Sul-R:1317)
- 3. Burnt Toast (Sul-R:1265)
- 4. Lt. Brown (Sul-R:1170)
- 5. Nile Green (Sul-R:1274)
- 6. Xmas Green (Sul-R:1051)
- 7. Dewberry (Sul-R:1304)
- 8. Cornsilk (Sul-R:502)
- 9. Lt. Putty (Sul-R:1229)
- 10. Goldenrod (Sul-R:1024)
- 11. Blue Black (Sul-R:1182)

Deck_the_halls_09-5x7.dst
5.00x6.93 inches; 20,525 stitches
11 thread changes; 11 colors



- 1. Sunflower Gold (Sul-R:1333)
- 2. Poppy (Sul-R:1317)
- 3. Burnt Toast (Sul-R:1265)
- 4. Lt. Brown (Sul-R:1170)
- 5. Nile Green (Sul-R:1274)
- 6. Xmas Green (Sul-R:1051)
- 7. Dewberry (Sul-R:1304)
- 8. Cornsilk (Sul-R:502)
- 9. Lt. Putty (Sul-R:1229)
- 10. Goldenrod (Sul-R:1024)
- 11. Blue Black (Sul-R:1182)

Deck_the_halls_09-6x10.dst
6.00x8.35 inches; 23,739 stitches
11 thread changes; 11 colors



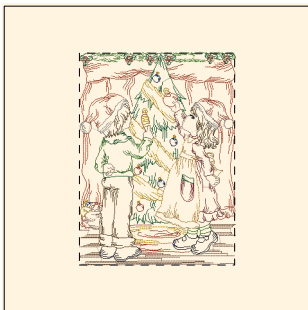
- 1. Sunflower Gold (Sul-R:1333)
- 2. Poppy (Sul-R:1317)
- 3. Burnt Toast (Sul-R:1265)
- 4. Lt. Brown (Sul-R:1170)
- 5. Nile Green (Sul-R:1274)
- 6. Xmas Green (Sul-R:1051)
- 7. Dewberry (Sul-R:1304)
- 8. Cornsilk (Sul-R:502)
- 9. Lt. Putty (Sul-R:1229)
- 10. Goldenrod (Sul-R:1024)
- 11. Blue Black (Sul-R:1182)

Deck_the_halls_09-8x8.dst
5.54x7.69 inches; 22,216 stitches
11 thread changes; 11 colors



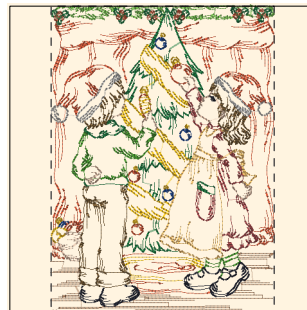
- 1. Nile Green (Sul-R:1274)
- 2. Maple (Sul-R:1021)
- 3. Goldenrod (Sul-R:1024)
- 4. Med. Maple (Sul-R:1216)
- 5. Lt. Brown (Sul-R:1170)
- 6. Xmas Green (Sul-R:1051)
- 7. Grass Green (Sul-R:1049)
- 8. Toast (Sul-R:1266)
- 9. Cornsilk (Sul-R:502)
- 10. Team Blue (Sul-R:1535)
- 11. Med. Dk. Ecru (Sul-R:1054)
- 12. Steel Gray (Sul-R:1011)
- 13. Blue Black (Sul-R:1182)

Deck_the_halls_10-5x7.dst
5.00x6.80 inches; 20,941 stitches
13 thread changes; 13 colors



- 1. Nile Green (Sul-R:1274)
- 2. Maple (Sul-R:1021)
- 3. Goldenrod (Sul-R:1024)
- 4. Med. Maple (Sul-R:1216)
- 5. Lt. Brown (Sul-R:1170)
- 6. Xmas Green (Sul-R:1051)
- 7. Grass Green (Sul-R:1049)
- 8. Toast (Sul-R:1266)
- 9. Cornsilk (Sul-R:502)
- 10. Team Blue (Sul-R:1535)
- 11. Med. Dk. Ecru (Sul-R:1054)
- 12. Steel Gray (Sul-R:1011)
- 13. Blue Black (Sul-R:1182)

Deck_the_halls_10-6x10.dst
6.00x8.19 inches; 24,542 stitches
13 thread changes; 13 colors



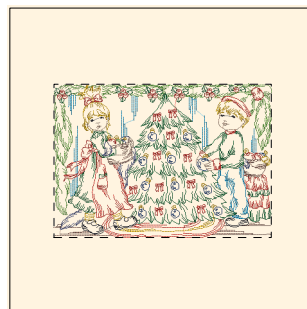
- 1. Nile Green (Sul-R:1274)
- 2. Maple (Sul-R:1021)
- 3. Goldenrod (Sul-R:1024)
- 4. Med. Maple (Sul-R:1216)
- 5. Lt. Brown (Sul-R:1170)
- 6. Xmas Green (Sul-R:1051)
- 7. Grass Green (Sul-R:1049)
- 8. Toast (Sul-R:1266)
- 9. Cornsilk (Sul-R:502)
- 10. Team Blue (Sul-R:1535)
- 11. Med. Dk. Ecru (Sul-R:1054)
- 12. Steel Gray (Sul-R:1011)
- 13. Blue Black (Sul-R:1182)

Deck_the_halls_10-8x8.dst
5.75x7.87 inches; 23,801 stitches
13 thread changes; 13 colors



- 1. Duck Wing Blue (Sul-R:1250)
- 2. Nile Green (Sul-R:1274)
- 3. Xmas Green (Sul-R:1051)
- 4. Poppy (Sul-R:1317)
- 5. (Sul-R:1269)
- 6. Team Blue (Sul-R:1535)
- 7. Dusty Navy (Sul-R:1198)
- 8. Goldenrod (Sul-R:1024)
- 9. Med. Dk. Ecru (Sul-R:1054)
- 10. Blue Black (Sul-R:1182)

Deck_the_halls_11-5x7.dst
7.00x4.93 inches; 26,823 stitches
10 thread changes; 10 colors



- 1. Duck Wing Blue (Sul-R:1250)
- 2. Nile Green (Sul-R:1274)
- 3. Xmas Green (Sul-R:1051)
- 4. Poppy (Sul-R:1317)
- 5. (Sul-R:1269)
- 6. Team Blue (Sul-R:1535)
- 7. Dusty Navy (Sul-R:1198)
- 8. Goldenrod (Sul-R:1024)
- 9. Med. Dk. Ecru (Sul-R:1054)
- 10. Blue Black (Sul-R:1182)

Deck_the_halls_11-6x10.dst
8.39x5.91 inches; 31,354 stitches
10 thread changes; 10 colors



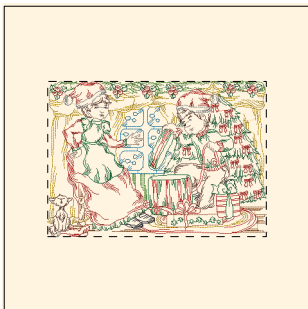
- 1. Duck Wing Blue (Sul-R:1250)
- 2. Nile Green (Sul-R:1274)
- 3. Xmas Green (Sul-R:1051)
- 4. Poppy (Sul-R:1317)
- 5. (Sul-R:1269)
- 6. Team Blue (Sul-R:1535)
- 7. Dusty Navy (Sul-R:1198)
- 8. Goldenrod (Sul-R:1024)
- 9. Med. Dk. Ecru (Sul-R:1054)
- 10. Blue Black (Sul-R:1182)

Deck_the_halls_11-8x8.dst
7.87x5.52 inches; 29,681 stitches
10 thread changes; 10 colors



- 1. Duck Wing Blue (Sul-R:1250)
- 2. Goldenrod (Sul-R:1024)
- 3. Xmas Green (Sul-R:1051)
- 4. Poppy (Sul-R:1317)
- 5. Garden Green (Sul-R:569)
- 6. Tan (Sul-R:1126)
- 7. Nile Green (Sul-R:1274)
- 8. Mink Brown (Sul-R:1267)
- 9. Bittersweet (Sul-R:1313)
- 10. Steel Gray (Sul-R:1011)
- 11. Med. Dk. Ecru (Sul-R:1054)
- 12. Blue Black (Sul-R:1182)

Deck_the_halls_12-5x7.dst
7.00x5.00 inches; 27,164 stitches
12 thread changes; 12 colors



- 1. Duck Wing Blue (Sul-R:1250)
- 2. Goldenrod (Sul-R:1024)
- 3. Xmas Green (Sul-R:1051)
- 4. Poppy (Sul-R:1317)
- 5. Garden Green (Sul-R:569)
- 6. Tan (Sul-R:1126)
- 7. Nile Green (Sul-R:1274)
- 8. Mink Brown (Sul-R:1267)
- 9. Bittersweet (Sul-R:1313)
- 10. Steel Gray (Sul-R:1011)
- 11. Med. Dk. Ecru (Sul-R:1054)
- 12. Blue Black (Sul-R:1182)

Deck_the_halls_12-6x10.dst
8.43x6.00 inches; 31,762 stitches
12 thread changes; 12 colors



- 1. Duck Wing Blue (Sul-R:1250)
- 2. Goldenrod (Sul-R:1024)
- 3. Xmas Green (Sul-R:1051)
- 4. Poppy (Sul-R:1317)
- 5. Garden Green (Sul-R:569)
- 6. Tan (Sul-R:1126)
- 7. Nile Green (Sul-R:1274)
- 8. Mink Brown (Sul-R:1267)
- 9. Bittersweet (Sul-R:1313)
- 10. Steel Gray (Sul-R:1011)
- 11. Med. Dk. Ecru (Sul-R:1054)
- 12. Blue Black (Sul-R:1182)

Deck_the_halls_12-8x8.dst
7.87x5.59 inches; 29,978 stitches
12 thread changes; 12 colors