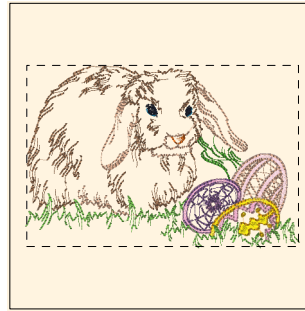


- 1. Goldenrod (Sul-R:1024)
- 2. Cinnamon (Sul-R:568)
- 3. Nile Green (Sul-R:1274)
- 4. Garden Green (Sul-R:569)
- 5. Med. Dk. Khaki (Sul-R:1040)
- 6. Putty (Sul-R:1508)
- 7. Duck Wing Blue (Sul-R:1250)
- 8. Blue Black (Sul-R:1182)

Easter_portraits_01-5x7.dst
4.22x6.99 inches; 10,384 stitches
8 thread changes; 8 colors



- 1. Grass Green (Sul-R:1049)
- 2. Pale Peach (Sul-R:1064)
- 3. Mimosa Yellow (Sul-R:1187)
- 4. Mauve (Sul-R:1117)
- 5. Taupe (Sul-R:1213)
- 6. Dk. Ecru (Sul-R:1128)
- 7. Lt. Plum (Sul-R:1297)
- 8. Sunflower Gold (Sul-R:1333)
- 9. Nile Green (Sul-R:1274)
- 10. Toast (Sul-R:1266)
- 11. Dk. Ecru (Sul-R:1128)
- 12. Duck Wing Blue (Sul-R:1250)
- 13. Blue Black (Sul-R:1182)
- 14. Cinnamon (Sul-R:568)

Easter_portraits_02-5x7.dst
7.00x4.67 inches; 15,245 stitches
14 thread changes; 13 colors



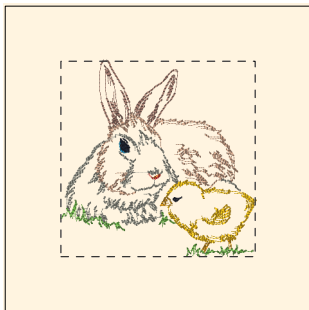
- 1. Taupe (Sul-R:1213)
- 2. Lt. Plum (Sul-R:1297)
- 3. Lemon Yellow (Sul-R:1067)
- 4. Sunflower Gold (Sul-R:1333)
- 5. Mauve (Sul-R:1117)
- 6. Pastel Mauve (Sul-R:1113)
- 7. Mimosa Yellow (Sul-R:1187)
- 8. Nile Green (Sul-R:1274)
- 9. Garden Green (Sul-R:569)
- 10. Med. Dk. Khaki (Sul-R:1040)
- 11. Putty (Sul-R:1508)
- 12. Taupe (Sul-R:1213)
- 13. Duck Wing Blue (Sul-R:1250)
- 14. Blue Black (Sul-R:1182)
- 15. Cinnamon (Sul-R:568)

Easter_portraits_03-5x7.dst
7.00x4.42 inches; 14,417 stitches
15 thread changes; 14 colors



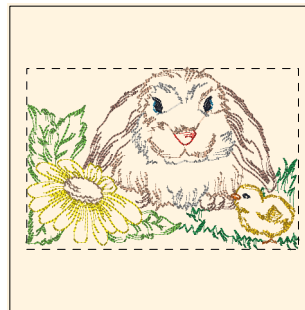
- 1. Nile Green (Sul-R:1274)
- 2. Garden Green (Sul-R:569)
- 3. Team Blue (Sul-R:1535)
- 4. Goldenrod (Sul-R:1024)
- 5. Sunflower Gold (Sul-R:1333)
- 6. Blue Black (Sul-R:1182)

Easter_portraits_04-5x7.dst
4.68x7.00 inches; 12,344 stitches
6 thread changes; 6 colors



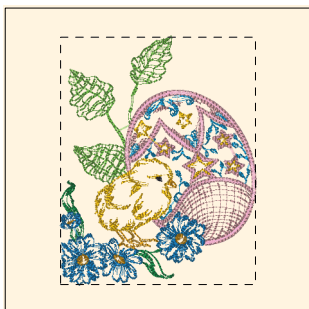
- 1. Goldenrod (Sul-R:1024)
- 2. Cinnamon (Sul-R:568)
- 3. Sunflower Gold (Sul-R:1333)
- 4. Poppy (Sul-R:1317)
- 5. Nile Green (Sul-R:1274)
- 6. (Sul-R:1269)
- 7. Dk. Ecru (Sul-R:1128)
- 8. Putty (Sul-R:1508)
- 9. Duck Wing Blue (Sul-R:1250)
- 10. Blue Black (Sul-R:1182)

Easter_portraits_05-5x7.dst
5.00x5.04 inches; 9,029 stitches
10 thread changes; 10 colors



- 1. Nile Green (Sul-R:1274)
- 2. Garden Green (Sul-R:569)
- 3. (Sul-R:1269)
- 4. Dk. Ecru (Sul-R:1128)
- 5. Steel Gray (Sul-R:1011)
- 6. Goldenrod (Sul-R:1024)
- 7. Mimosa Yellow (Sul-R:1187)
- 8. Cinnamon (Sul-R:568)
- 9. Poppy (Sul-R:1317)
- 10. Duck Wing Blue (Sul-R:1250)
- 11. Blue Black (Sul-R:1182)

Easter_portraits_06-5x7.dst
7.00x4.66 inches; 14,035 stitches
11 thread changes; 11 colors



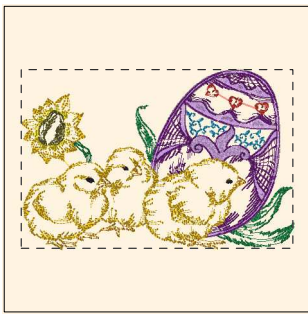
- 1. Nile Green (Sul-R:1274)
- 2. Garden Green (Sul-R:569)
- 3. Duck Wing Blue (Sul-R:1250)
- 4. Mauve (Sul-R:1117)
- 5. Taupe (Sul-R:1213)
- 6. Goldenrod (Sul-R:1024)
- 7. (Sul-R:1290)
- 8. Sunflower Gold (Sul-R:1333)
- 9. Blue Black (Sul-R:1182)

Easter_portraits_07-5x7.dst
5.02x6.38 inches; 20,875 stitches
9 thread changes; 9 colors



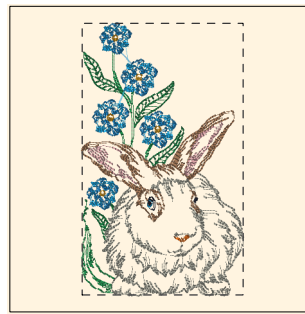
- 1. Garden Green (Sul-R:569)
- 2. Peacock Blue (Sul-R:1134)
- 3. Duck Wing Blue (Sul-R:1250)
- 4. Goldenrod (Sul-R:1024)
- 5. Poppy (Sul-R:1317)
- 6. Toast (Sul-R:1266)
- 7. Drab Green (Sul-R:1228)
- 8. (Sul-R:1290)
- 9. Sunflower Gold (Sul-R:1333)
- 10. Dk. Mauve (Sul-R:1119)
- 11. Blue Black (Sul-R:1182)

Easter_portraits_08-5x7.dst
4.99x6.67 inches; 23,544 stitches
11 thread changes; 11 colors



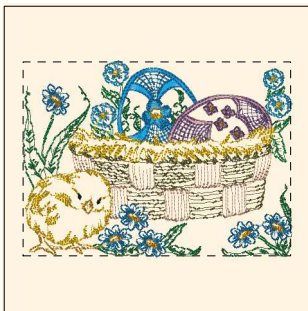
- 1. Duck Wing Blue (Sul-R:1250)
- 2. Garden Green (Sul-R:569)
- 3. Xmas Green (Sul-R:1051)
- 4. Hyacinth (Sul-R:1296)
- 5. Deep Orchid (Sul-R:1255)
- 6. Goldenrod (Sul-R:1024)
- 7. Mimosa Yellow (Sul-R:1187)
- 8. Sunflower Gold (Sul-R:1333)
- 9. Drab Green (Sul-R:1228)
- 10. Poppy (Sul-R:1317)
- 11. Blue Black (Sul-R:1182)

Easter_portraits_09-5x7.dst
7.00x4.60 inches; 19,426 stitches
11 thread changes; 11 colors



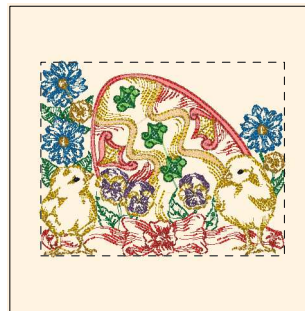
- 1. Xmas Green (Sul-R:1051)
- 2. Garden Green (Sul-R:569)
- 3. (Sul-R:1290)
- 4. Duck Wing Blue (Sul-R:1250)
- 5. Sunflower Gold (Sul-R:1333)
- 6. Toast (Sul-R:1266)
- 7. Putty (Sul-R:1508)
- 8. Taupe (Sul-R:1213)
- 9. Blue Black (Sul-R:1182)
- 10. Cinnamon (Sul-R:568)

Easter_portraits_10-5x7.dst
4.15x7.00 inches; 15,336 stitches
10 thread changes; 10 colors



- 1. Garden Green (Sul-R:569)
- 2. Xmas Green (Sul-R:1051)
- 3. Duck Wing Blue (Sul-R:1250)
- 4. (Sul-R:1290)
- 5. Duck Wing Blue (Sul-R:1250)
- 6. Taupe (Sul-R:1213)
- 7. Lt. Plum (Sul-R:1297)
- 8. Drab Green (Sul-R:1228)
- 9. Dk. Ecru (Sul-R:1128)
- 10. Goldenrod (Sul-R:1024)
- 11. Sunflower Gold (Sul-R:1333)
- 12. Blue Black (Sul-R:1182)

Easter_portraits_11-5x7.dst
6.89x5.00 inches; 26,962 stitches
12 thread changes; 11 colors



- 1. Nile Green (Sul-R:1274)
- 2. Garden Green (Sul-R:569)
- 3. Peach (Sul-R:1019)
- 4. Poppy (Sul-R:1317)
- 5. (Sul-R:622)
- 6. Goldenrod (Sul-R:1024)
- 7. (Sul-R:1290)
- 8. Sunflower Gold (Sul-R:1333)
- 9. Lt. Plum (Sul-R:1297)
- 10. Blue Black (Sul-R:1182)

Easter_portraits_12-5x7.dst
6.27x4.98 inches; 26,883 stitches
10 thread changes; 10 colors