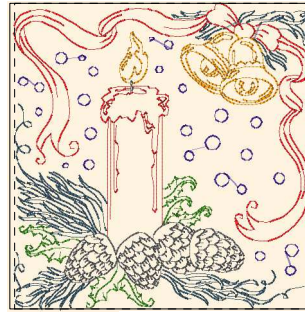


- 1. Orange Sunrise (Sul-R:1238)
- 2. (Sul-R:1319)
- 3. Grass Green (Sul-R:1049)
- 4. Med. Steel Gray (Sul-R:1166)
- 5. Weathered Blue (Sul-R:1171)
- 6. Hot Pink (Sul-R:1109)

Christmas_block001-200x200mm.dst
7.87x7.72 inches; 23,636 stitches
6 thread changes; 6 colors



- 1. Orange Sunrise (Sul-R:1238)
- 2. (Sul-R:1319)
- 3. Grass Green (Sul-R:1049)
- 4. Med. Steel Gray (Sul-R:1166)
- 5. Weathered Blue (Sul-R:1171)
- 6. Eggplant (Sul-R:1302)

Christmas_block002-200x200mm.dst
7.61x7.87 inches; 22,441 stitches
6 thread changes; 6 colors



- 1. Orange Sunrise (Sul-R:1238)
- 2. (Sul-R:1319)
- 3. Wine (Sul-R:1312)
- 4. Grass Green (Sul-R:1049)
- 5. Med. Steel Gray (Sul-R:1166)
- 6. Weathered Blue (Sul-R:1171)

Christmas_block003-200x200mm.dst
7.68x7.87 inches; 26,517 stitches
6 thread changes; 6 colors



- 1. Orange Sunrise (Sul-R:1238)
- 2. (Sul-R:1319)
- 3. Grass Green (Sul-R:1049)
- 4. Med. Steel Gray (Sul-R:1166)

Christmas_block004-200x200mm.dst
7.86x7.84 inches; 24,727 stitches
4 thread changes; 4 colors



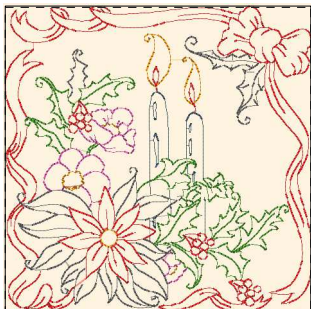
- 1. Orange Sunrise (Sul-R:1238)
- 2. (Sul-R:1319)
- 3. Grass Green (Sul-R:1049)
- 4. Med. Steel Gray (Sul-R:1166)
- 5. Weathered Blue (Sul-R:1171)

Christmas_block005-200x200mm.dst
7.74x7.87 inches; 18,360 stitches
5 thread changes; 5 colors



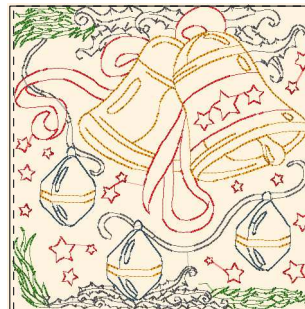
- 1. Orange Sunrise (Sul-R:1238)
- 2. (Sul-R:1319)
- 3. Wine (Sul-R:1312)
- 4. Med. Steel Gray (Sul-R:1166)
- 5. Weathered Blue (Sul-R:1171)

Christmas_block006-200x200mm.dst
7.87x7.83 inches; 22,520 stitches
5 thread changes; 5 colors



- 1. Orange Sunrise (Sul-R:1238)
- 2. (Sul-R:1319)
- 3. Grass Green (Sul-R:1049)
- 4. Med. Steel Gray (Sul-R:1166)
- 5. Weathered Blue (Sul-R:1171)
- 6. Hot Pink (Sul-R:1109)

Christmas_block007-200x200mm.dst
7.87x7.80 inches; 14,387 stitches
6 thread changes; 6 colors



- 1. Orange Sunrise (Sul-R:1238)
- 2. (Sul-R:1319)
- 3. Grass Green (Sul-R:1049)
- 4. Med. Steel Gray (Sul-R:1166)
- 5. Weathered Blue (Sul-R:1171)

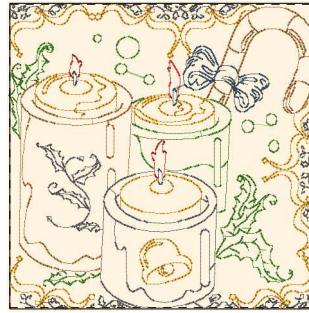
Christmas_block008-200x200mm.dst
7.68x7.87 inches; 15,844 stitches
5 thread changes; 5 colors



- 1. Orange Sunrise (Sul-R:1238)
- 2. (Sul-R:1319)
- 3. Grass Green (Sul-R:1049)
- 4. Med. Steel Gray (Sul-R:1166)
- 5. Weathered Blue (Sul-R:1171)

Christmas_block009-200x200mm.dst

7.86x7.87 inches; 13,755 stitches
5 thread changes; 5 colors



- 1. Orange Sunrise (Sul-R:1238)
- 2. (Sul-R:1319)
- 3. Grass Green (Sul-R:1049)
- 4. Tan (Sul-R:1126)
- 5. Med. Steel Gray (Sul-R:1166)
- 6. Weathered Blue (Sul-R:1171)

Christmas_block010-200x200mm.dst

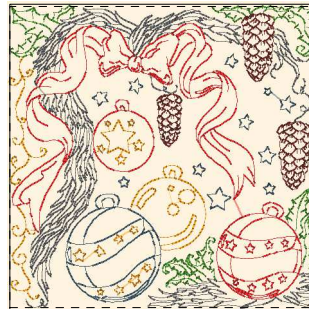
7.87x7.81 inches; 16,135 stitches
6 thread changes; 6 colors



- 1. Orange Sunrise (Sul-R:1238)
- 2. (Sul-R:1319)
- 3. Grass Green (Sul-R:1049)
- 4. Med. Steel Gray (Sul-R:1166)
- 5. Weathered Blue (Sul-R:1171)
- 6. Eggplant (Sul-R:1302)

Christmas_block011-200x200mm.dst

7.87x7.86 inches; 23,329 stitches
6 thread changes; 6 colors



- 1. Orange Sunrise (Sul-R:1238)
- 2. (Sul-R:1319)
- 3. Wine (Sul-R:1312)
- 4. Grass Green (Sul-R:1049)
- 5. Med. Steel Gray (Sul-R:1166)
- 6. Weathered Blue (Sul-R:1171)

Christmas_block012-200x200mm.dst

7.87x7.76 inches; 28,010 stitches
6 thread changes; 6 colors