



- 1. Duck Wing Blue (Sul-R:1250)
- 2. Team Blue (Sul-R:1535)
- 3. Deep Orchid (Sul-R:1255)
- 4. Cinnamon (Sul-R:568)
- 5. (Sul-R:1244)
- 6. Rust (Sul-R:1181)
- 7. Grass Green (Sul-R:1049)
- 8. Xmas Green (Sul-R:1051)
- 9. Drab Green (Sul-R:1228)
- 10. Gray (Sul-R:1219)
- 11. Blackberry (Sul-R:1215)

**Easy\_snowmen\_blocks\_01-5x7.dst**

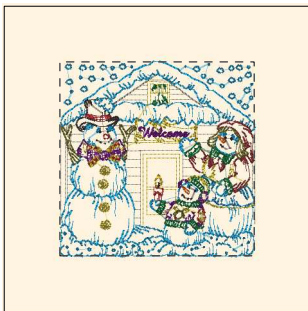
4.99x5.00 inches; 17,430 stitches  
11 thread changes; 11 colors



- 1. Duck Wing Blue (Sul-R:1250)
- 2. Drab Green (Sul-R:1228)
- 3. Cinnamon (Sul-R:568)
- 4. (Sul-R:1244)
- 5. Xmas Green (Sul-R:1051)
- 6. Rust (Sul-R:1181)
- 7. Deep Orchid (Sul-R:1255)
- 8. Team Blue (Sul-R:1535)
- 9. Blackberry (Sul-R:1215)

**Easy\_snowmen\_blocks\_02-5x7.dst**

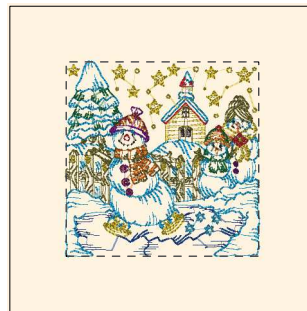
5.08x5.00 inches; 16,956 stitches  
9 thread changes; 9 colors



- 1. Putty (Sul-R:1508)
- 2. Duck Wing Blue (Sul-R:1250)
- 3. Deep Orchid (Sul-R:1255)
- 4. (Sul-R:1244)
- 5. Deep Mauve (Sul-R:1237)
- 6. Rust (Sul-R:1181)
- 7. Xmas Green (Sul-R:1051)
- 8. Drab Green (Sul-R:1228)
- 9. (Sul-R:1290)
- 10. Cinnamon (Sul-R:568)
- 11. Blackberry (Sul-R:1215)

**Easy\_snowmen\_blocks\_03-5x7.dst**

5.00x5.00 inches; 18,296 stitches  
11 thread changes; 11 colors



- 1. Team Blue (Sul-R:1535)
- 2. Duck Wing Blue (Sul-R:1250)
- 3. Drab Green (Sul-R:1228)
- 4. Cinnamon (Sul-R:568)
- 5. (Sul-R:1244)
- 6. Deep Mauve (Sul-R:1237)
- 7. Rust (Sul-R:1181)
- 8. Xmas Green (Sul-R:1051)
- 9. Deep Orchid (Sul-R:1255)
- 10. Blackberry (Sul-R:1215)

**Easy\_snowmen\_blocks\_04-5x7.dst**

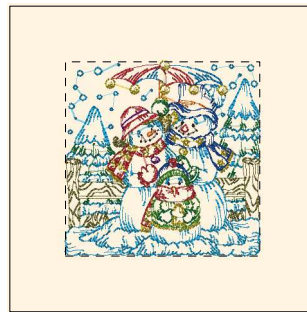
4.96x5.00 inches; 19,643 stitches  
10 thread changes; 10 colors



- 1. Dk. Ecru (Sul-R:1128)
- 2. Drab Green (Sul-R:1228)
- 3. Duck Wing Blue (Sul-R:1250)
- 4. Cinnamon (Sul-R:568)
- 5. (Sul-R:1244)
- 6. Rust (Sul-R:1181)
- 7. Grass Green (Sul-R:1049)
- 8. Xmas Green (Sul-R:1051)
- 9. Med. Rose (Sul-R:1231)
- 10. Deep Orchid (Sul-R:1255)
- 11. Team Blue (Sul-R:1535)
- 12. Blackberry (Sul-R:1215)

**Easy\_snowmen\_blocks\_05-5x7.dst**

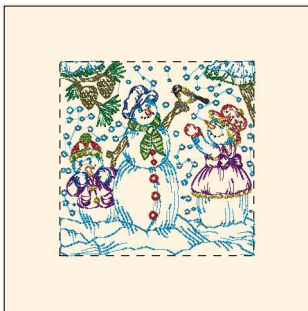
5.00x5.00 inches; 19,697 stitches  
12 thread changes; 12 colors



- 1. Duck Wing Blue (Sul-R:1250)
- 2. (Sul-R:1290)
- 3. Drab Green (Sul-R:1228)
- 4. Cinnamon (Sul-R:568)
- 5. (Sul-R:1244)
- 6. Rust (Sul-R:1181)
- 7. Grass Green (Sul-R:1049)
- 8. Xmas Green (Sul-R:1051)
- 9. Deep Orchid (Sul-R:1255)
- 10. Team Blue (Sul-R:1535)
- 11. Blackberry (Sul-R:1215)

**Easy\_snowmen\_blocks\_06-5x7.dst**

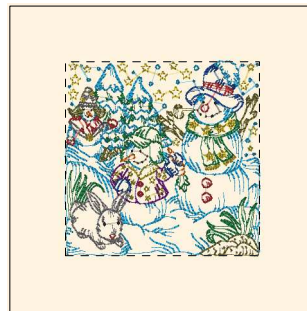
5.00x5.00 inches; 19,301 stitches  
11 thread changes; 11 colors



- 1. Duck Wing Blue (Sul-R:1250)
- 2. (Sul-R:1244)
- 3. Xmas Green (Sul-R:1051)
- 4. Grass Green (Sul-R:1049)
- 5. Drab Green (Sul-R:1228)
- 6. Gray (Sul-R:1219)
- 7. Deep Orchid (Sul-R:1255)
- 8. Team Blue (Sul-R:1535)
- 9. Rust (Sul-R:1181)
- 10. Cinnamon (Sul-R:568)
- 11. Blackberry (Sul-R:1215)

**Easy\_snowmen\_blocks\_07-5x7.dst**

5.00x5.00 inches; 17,621 stitches  
11 thread changes; 11 colors



- 1. Duck Wing Blue (Sul-R:1250)
- 2. (Sul-R:1244)
- 3. Xmas Green (Sul-R:1051)
- 4. Drab Green (Sul-R:1228)
- 5. Gray (Sul-R:1219)
- 6. Deep Orchid (Sul-R:1255)
- 7. Team Blue (Sul-R:1535)
- 8. Rust (Sul-R:1181)
- 9. Cinnamon (Sul-R:568)
- 10. Blackberry (Sul-R:1215)

**Easy\_snowmen\_blocks\_08-5x7.dst**

5.00x5.00 inches; 18,697 stitches  
10 thread changes; 10 colors

Printed 2/2/2014



- 1. Drab Green (Sul-R:1228)
- 2. Deep Orchid (Sul-R:1255)
- 3. Duck Wing Blue (Sul-R:1250)
- 4. (Sul-R:1244)
- 5. Grass Green (Sul-R:1049)
- 6. Rust (Sul-R:1181)
- 7. Xmas Green (Sul-R:1051)
- 8. Team Blue (Sul-R:1535)
- 9. (Sul-R:1290)
- 10. Cinnamon (Sul-R:568)
- 11. Blackberry (Sul-R:1215)

**Easy\_snowmen\_blocks\_09-5x7.dst**

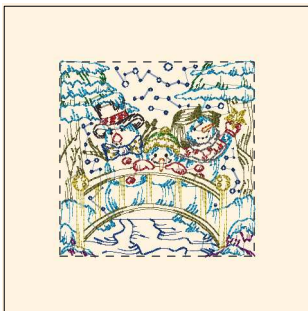
5.00x5.00 inches; 16,125 stitches  
11 thread changes; 11 colors



- 1. Team Blue (Sul-R:1535)
- 2. Duck Wing Blue (Sul-R:1250)
- 3. (Sul-R:1244)
- 4. Rust (Sul-R:1181)
- 5. Garden Green (Sul-R:569)
- 6. Xmas Green (Sul-R:1051)
- 7. Drab Green (Sul-R:1228)
- 8. Deep Orchid (Sul-R:1255)
- 9. Cinnamon (Sul-R:568)
- 10. Blackberry (Sul-R:1215)

**Easy\_snowmen\_blocks\_10-5x7.dst**

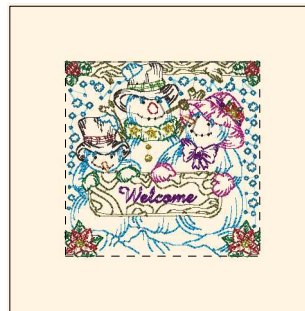
5.00x5.00 inches; 18,087 stitches  
10 thread changes; 10 colors



- 1. Xmas Green (Sul-R:1051)
- 2. Duck Wing Blue (Sul-R:1250)
- 3. Team Blue (Sul-R:1535)
- 4. (Sul-R:1244)
- 5. Rust (Sul-R:1181)
- 6. Grass Green (Sul-R:1049)
- 7. Drab Green (Sul-R:1228)
- 8. Gray (Sul-R:1219)
- 9. Fuchsia (Sul-R:1192)
- 10. Cinnamon (Sul-R:568)
- 11. Blackberry (Sul-R:1215)

**Easy\_snowmen\_blocks\_11-5x7.dst**

5.00x5.00 inches; 17,193 stitches  
11 thread changes; 11 colors



- 1. Duck Wing Blue (Sul-R:1250)
- 2. Drab Green (Sul-R:1228)
- 3. (Sul-R:1244)
- 4. Xmas Green (Sul-R:1051)
- 5. Deep Mauve (Sul-R:1237)
- 6. Rust (Sul-R:1181)
- 7. Grass Green (Sul-R:1049)
- 8. Deep Orchid (Sul-R:1255)
- 9. Med. Rose (Sul-R:1231)
- 10. Cinnamon (Sul-R:568)
- 11. Blackberry (Sul-R:1215)

**Easy\_snowmen\_blocks\_12-5x7.dst**

5.00x5.00 inches; 18,985 stitches  
11 thread changes; 11 colors