

- 1. Med. Aqua (Sul-R:640)
- 2. Cornflower Blue (Sul-R:1249)
- 3. Pastel Coral (Sul-R:1016)
- 4. Brick (Sul-R:1081)
- 5. (Sul-R:1260)
- 6. Gold Green (Sul-R:1227)
- 7. Bright White (Sul-R:1001)

Flamingos_and_hibiscus_01-5x7.dst

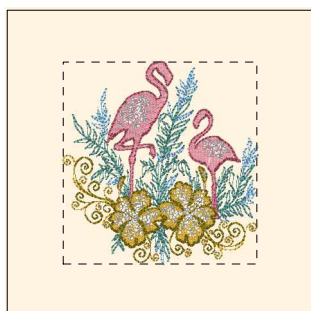
4.79x6.92 inches; 31,630 stitches
7 thread changes; 7 colors



- 1. Willow Green (Sul-R:1279)
- 2. Dk. Sage Green (Sul-R:1285)
- 3. Sweet Pink (Sul-R:1256)
- 4. Med. Rose (Sul-R:1231)
- 5. Salmon Peach (Sul-R:1259)
- 6. Peach (Sul-R:1019)
- 7. Tan (Sul-R:1126)
- 8. Bright White (Sul-R:1001)

Flamingos_and_hibiscus_02-5x7.dst

4.99x6.70 inches; 28,880 stitches
8 thread changes; 8 colors



- 1. Cornflower Blue (Sul-R:1249)
- 2. Med. Aqua (Sul-R:640)
- 3. Pastel Coral (Sul-R:1016)
- 4. Brick (Sul-R:1081)
- 5. (Sul-R:1260)
- 6. Gold Green (Sul-R:1227)
- 7. Bright White (Sul-R:1001)

Flamingos_and_hibiscus_03-5x7.dst

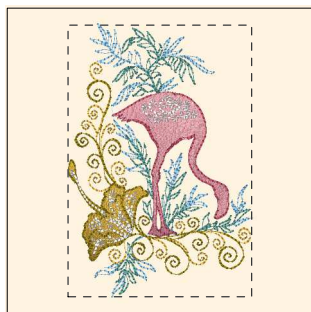
4.99x5.20 inches; 25,593 stitches
7 thread changes; 7 colors



- 1. Willow Green (Sul-R:1279)
- 2. Dk. Sage Green (Sul-R:1285)
- 3. Sweet Pink (Sul-R:1256)
- 4. Med. Rose (Sul-R:1231)
- 5. Salmon Peach (Sul-R:1259)
- 6. Peach (Sul-R:1019)
- 7. Tan (Sul-R:1126)
- 8. Bright White (Sul-R:1001)

Flamingos_and_hibiscus_04-5x7.dst

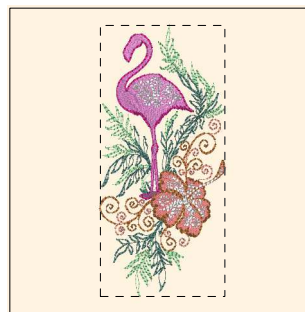
4.99x6.61 inches; 27,946 stitches
8 thread changes; 8 colors



- 1. Cornflower Blue (Sul-R:1249)
- 2. Med. Aqua (Sul-R:640)
- 3. Pastel Coral (Sul-R:1016)
- 4. Brick (Sul-R:1081)
- 5. (Sul-R:1260)
- 6. Gold Green (Sul-R:1227)
- 7. Bright White (Sul-R:1001)

Flamingos_and_hibiscus_05-5x7.dst

4.73x7.00 inches; 22,044 stitches
7 thread changes; 7 colors



- 1. Willow Green (Sul-R:1279)
- 2. Dk. Sage Green (Sul-R:1285)
- 3. Sweet Pink (Sul-R:1256)
- 4. Med. Rose (Sul-R:1231)
- 5. Salmon Peach (Sul-R:1259)
- 6. Peach (Sul-R:1019)
- 7. Tan (Sul-R:1126)
- 8. Bright White (Sul-R:1001)

Flamingos_and_hibiscus_06-5x7.dst

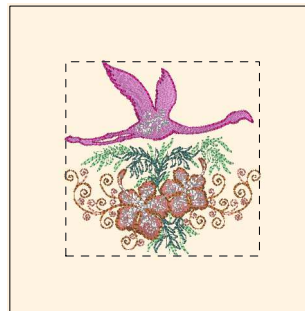
3.21x6.98 inches; 18,616 stitches
8 thread changes; 8 colors



- 1. Cornflower Blue (Sul-R:1249)
- 2. Med. Aqua (Sul-R:640)
- 3. Pastel Coral (Sul-R:1016)
- 4. Brick (Sul-R:1081)
- 5. (Sul-R:1260)
- 6. Gold Green (Sul-R:1227)
- 7. Bright White (Sul-R:1001)

Flamingos_and_hibiscus_07-5x7.dst

4.96x6.71 inches; 34,138 stitches
7 thread changes; 7 colors

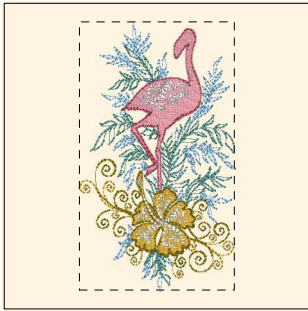


- 1. Willow Green (Sul-R:1279)
- 2. Dk. Sage Green (Sul-R:1285)
- 3. Sweet Pink (Sul-R:1256)
- 4. Med. Rose (Sul-R:1231)
- 5. Salmon Peach (Sul-R:1259)
- 6. Peach (Sul-R:1019)
- 7. Tan (Sul-R:1126)
- 8. Bright White (Sul-R:1001)

Flamingos_and_hibiscus_08-5x7.dst

4.99x5.01 inches; 23,189 stitches
8 thread changes; 8 colors

Printed 2/2/2014



- 1. Cornflower Blue (Sul-R:1249)
- 2. Med. Aqua (Sul-R:640)
- 3. Pastel Coral (Sul-R:1016)
- 4. Brick (Sul-R:1081)
- 5. (Sul-R:1260)
- 6. Gold Green (Sul-R:1227)
- 7. Bright White (Sul-R:1001)

Flamingos_and_hibiscus_09-5x7.dst

3.99x6.90 inches; 20,160 stitches
7 thread changes; 7 colors



- 1. Willow Green (Sul-R:1279)
- 2. Dk. Sage Green (Sul-R:1285)
- 3. Sweet Pink (Sul-R:1256)
- 4. Med. Rose (Sul-R:1231)
- 5. Salmon Peach (Sul-R:1259)
- 6. Peach (Sul-R:1019)
- 7. Tan (Sul-R:1126)
- 8. Bright White (Sul-R:1001)

Flamingos_and_hibiscus_10-5x7.dst

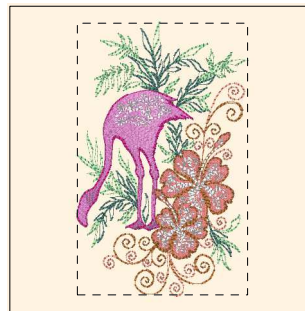
4.99x6.71 inches; 28,614 stitches
8 thread changes; 8 colors



- 1. Cornflower Blue (Sul-R:1249)
- 2. Med. Aqua (Sul-R:640)
- 3. Pastel Coral (Sul-R:1016)
- 4. Brick (Sul-R:1081)
- 5. (Sul-R:1260)
- 6. Gold Green (Sul-R:1227)
- 7. Bright White (Sul-R:1001)

Flamingos_and_hibiscus_11-5x7.dst

4.31x6.99 inches; 27,612 stitches
7 thread changes; 7 colors



- 1. Willow Green (Sul-R:1279)
- 2. Dk. Sage Green (Sul-R:1285)
- 3. Sweet Pink (Sul-R:1256)
- 4. Med. Rose (Sul-R:1231)
- 5. Salmon Peach (Sul-R:1259)
- 6. Peach (Sul-R:1019)
- 7. Tan (Sul-R:1126)
- 8. Bright White (Sul-R:1001)

Flamingos_and_hibiscus_12-5x7.dst

4.39x7.00 inches; 26,810 stitches
8 thread changes; 8 colors