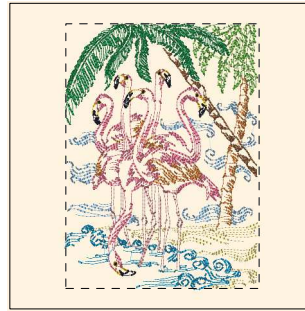


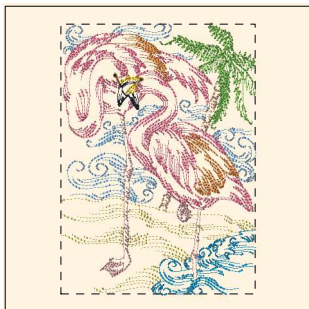
- 1. Gold (Sul-R:1070)
- 2. Lt. Baby Blue (Sul-R:1222)
- 3. Duck Wing Blue (Sul-R:1250)
- 4. Nutmeg (Sul-R:521)
- 5. Nile Green (Sul-R:1274)
- 6. Taupe (Sul-R:1213)
- 7. Coral (Sul-R:1154)
- 8. Autumn Gold (Sul-R:523)
- 9. Goldenrod (Sul-R:1024)
- 10. Blue Black (Sul-R:1182)

Flamingos_001-5x7.dst
5.00x6.80 inches; 16,948 stitches
10 thread changes; 10 colors



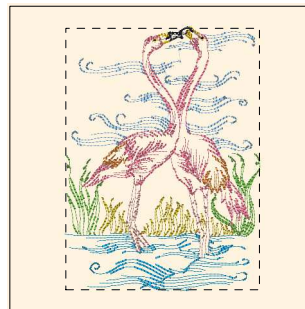
- 1. Gold (Sul-R:1070)
- 2. Lt. Baby Blue (Sul-R:1222)
- 3. Duck Wing Blue (Sul-R:1250)
- 4. Autumn Gold (Sul-R:523)
- 5. Nutmeg (Sul-R:521)
- 6. Nile Green (Sul-R:1274)
- 7. Garden Green (Sul-R:569)
- 8. Taupe (Sul-R:1213)
- 9. Coral (Sul-R:1154)
- 10. Autumn Gold (Sul-R:523)
- 11. Goldenrod (Sul-R:1024)
- 12. Blue Black (Sul-R:1182)

Flamingos_002-5x7.dst
4.98x6.81 inches; 28,635 stitches
12 thread changes; 11 colors



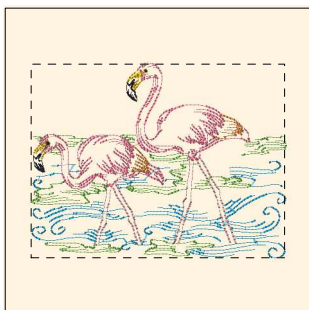
- 1. Lt. Baby Blue (Sul-R:1222)
- 2. Gold (Sul-R:1070)
- 3. Duck Wing Blue (Sul-R:1250)
- 4. Dk. Ecru (Sul-R:1128)
- 5. Nile Green (Sul-R:1274)
- 6. Taupe (Sul-R:1213)
- 7. Coral (Sul-R:1154)
- 8. Autumn Gold (Sul-R:523)
- 9. Goldenrod (Sul-R:1024)
- 10. Blue Black (Sul-R:1182)

Flamingos_003-5x7.dst
5.00x6.94 inches; 19,441 stitches
10 thread changes; 10 colors



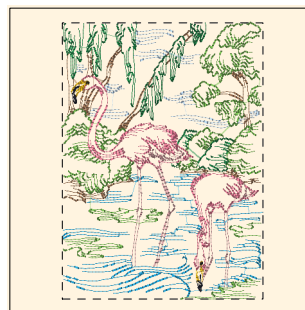
- 1. Lt. Baby Blue (Sul-R:1222)
- 2. Duck Wing Blue (Sul-R:1250)
- 3. (Sul-R:1244)
- 4. Nile Green (Sul-R:1274)
- 5. Taupe (Sul-R:1213)
- 6. Coral (Sul-R:1154)
- 7. Autumn Gold (Sul-R:523)
- 8. Goldenrod (Sul-R:1024)
- 9. Blue Black (Sul-R:1182)

Flamingos_004-5x7.dst
4.98x6.74 inches; 13,925 stitches
9 thread changes; 9 colors



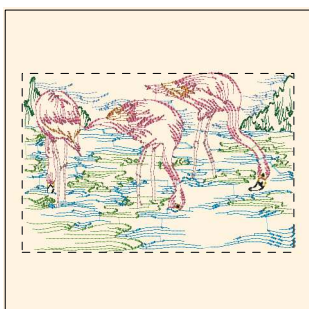
- 1. Duck Wing Blue (Sul-R:1250)
- 2. Nile Green (Sul-R:1274)
- 3. Taupe (Sul-R:1213)
- 4. Coral (Sul-R:1154)
- 5. Autumn Gold (Sul-R:523)
- 6. Goldenrod (Sul-R:1024)
- 7. Blue Black (Sul-R:1182)

Flamingos_005-5x7.dst
6.53x4.99 inches; 10,667 stitches
7 thread changes; 7 colors



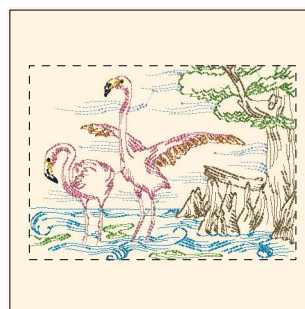
- 1. Duck Wing Blue (Sul-R:1250)
- 2. Pale Powder Blue (Sul-R:1074)
- 3. Toast (Sul-R:1266)
- 4. Nile Green (Sul-R:1274)
- 5. Garden Green (Sul-R:569)
- 6. Xmas Green (Sul-R:1051)
- 7. Taupe (Sul-R:1213)
- 8. Coral (Sul-R:1154)
- 9. Goldenrod (Sul-R:1024)
- 10. Blue Black (Sul-R:1182)

Flamingos_006-5x7.dst
5.17x7.11 inches; 22,626 stitches
10 thread changes; 10 colors



- 1. Lt. Baby Blue (Sul-R:1222)
- 2. Nile Green (Sul-R:1274)
- 3. Duck Wing Blue (Sul-R:1250)
- 4. Xmas Green (Sul-R:1051)
- 5. Taupe (Sul-R:1213)
- 6. Coral (Sul-R:1154)
- 7. Autumn Gold (Sul-R:523)
- 8. Goldenrod (Sul-R:1024)
- 9. Blue Black (Sul-R:1182)

Flamingos_007-5x7.dst
7.00x4.61 inches; 19,736 stitches
9 thread changes; 9 colors



- 1. Pale Powder Blue (Sul-R:1074)
- 2. Duck Wing Blue (Sul-R:1250)
- 3. Nile Green (Sul-R:1274)
- 4. Burnt Toast (Sul-R:1265)
- 5. Taupe (Sul-R:1213)
- 6. Coral (Sul-R:1154)
- 7. Autumn Gold (Sul-R:523)
- 8. Goldenrod (Sul-R:1024)
- 9. Blue Black (Sul-R:1182)

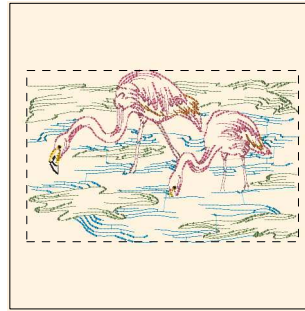
Flamingos_008-5x7.dst
6.86x5.00 inches; 15,115 stitches
9 thread changes; 9 colors

Printed 2/2/2014



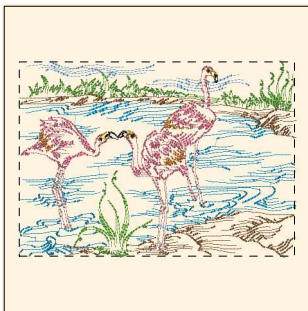
- 1. Lt. Baby Blue (Sul-R:1222)
- 2. Duck Wing Blue (Sul-R:1250)
- 3. Nile Green (Sul-R:1274)
- 4. Toast (Sul-R:1266)
- 5. Xmas Green (Sul-R:1051)
- 6. Taupe (Sul-R:1213)
- 7. Coral (Sul-R:1154)
- 8. Autumn Gold (Sul-R:523)
- 9. Goldenrod (Sul-R:1024)
- 10. Blue Black (Sul-R:1182)

Flamingos_009-5x7.dst
 5.00x5.90 inches; 11,543 stitches
 10 thread changes; 10 colors



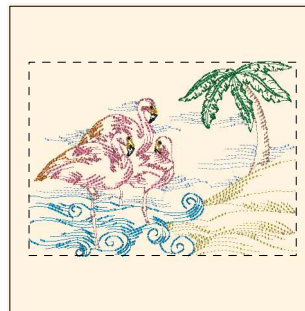
- 1. Duck Wing Blue (Sul-R:1250)
- 2. Pistachio (Sul-R:1276)
- 3. Taupe (Sul-R:1213)
- 4. Coral (Sul-R:1154)
- 5. Autumn Gold (Sul-R:523)
- 6. Goldenrod (Sul-R:1024)
- 7. Blue Black (Sul-R:1182)

Flamingos_010-5x7.dst
 6.99x4.41 inches; 13,432 stitches
 7 thread changes; 7 colors



- 1. Lt. Baby Blue (Sul-R:1222)
- 2. Nile Green (Sul-R:1274)
- 3. Duck Wing Blue (Sul-R:1250)
- 4. Nutmeg (Sul-R:521)
- 5. Taupe (Sul-R:1213)
- 6. Coral (Sul-R:1154)
- 7. Autumn Gold (Sul-R:523)
- 8. Goldenrod (Sul-R:1024)
- 9. Blue Black (Sul-R:1182)

Flamingos_011-5x7.dst
 7.09x5.00 inches; 22,836 stitches
 9 thread changes; 9 colors



- 1. Pale Powder Blue (Sul-R:1074)
- 2. Gold (Sul-R:1070)
- 3. Duck Wing Blue (Sul-R:1250)
- 4. Dk. Ecru (Sul-R:1128)
- 5. Garden Green (Sul-R:569)
- 6. Taupe (Sul-R:1213)
- 7. Coral (Sul-R:1154)
- 8. Autumn Gold (Sul-R:523)
- 9. Goldenrod (Sul-R:1024)
- 10. Blue Black (Sul-R:1182)

Flamingos_012-5x7.dst
 6.88x4.98 inches; 15,582 stitches
 10 thread changes; 10 colors