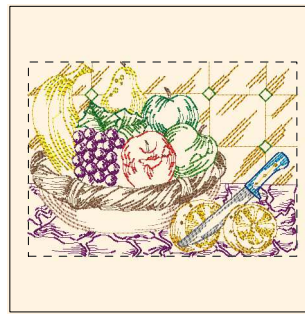


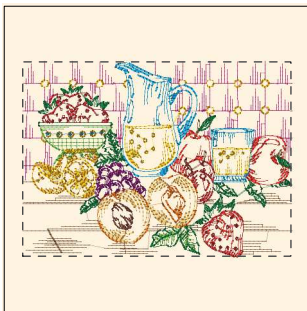
- 1. Duck Wing Blue (Sul-R:1250)
- 2. Sunflower Gold (Sul-R:1333)
- 3. Goldenrod (Sul-R:1024)
- 4. Poppy (Sul-R:1317)
- 5. Rust (Sul-R:1181)
- 6. Grass Green (Sul-R:1049)
- 7. Toast (Sul-R:1266)
- 8. Garden Green (Sul-R:569)
- 9. Xmas Green (Sul-R:1051)
- 10. Fuchsia (Sul-R:1192)
- 11. (Sul-R:1290)
- 12. Blackberry (Sul-R:1215)

Kitchen_fruit_01-5x7.dst
6.87x5.00 inches; 14,567 stitches
12 thread changes; 12 colors



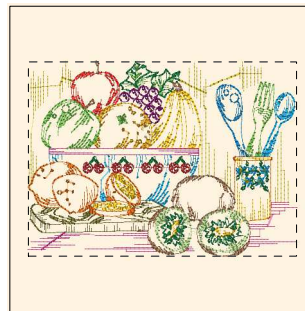
- 1. Sunflower Gold (Sul-R:1333)
- 2. Fuchsia (Sul-R:1192)
- 3. Dk. Ecru (Sul-R:1128)
- 4. Toast (Sul-R:1266)
- 5. Goldenrod (Sul-R:1024)
- 6. Mimosa Yellow (Sul-R:1187)
- 7. Poppy (Sul-R:1317)
- 8. Grass Green (Sul-R:1049)
- 9. Garden Green (Sul-R:569)
- 10. Xmas Green (Sul-R:1051)
- 11. Steel Gray (Sul-R:1011)
- 12. Gray (Sul-R:1219)
- 13. Duck Wing Blue (Sul-R:1250)
- 14. Team Blue (Sul-R:1535)

Kitchen_fruit_02-5x7.dst
6.91x5.00 inches; 16,271 stitches
14 thread changes; 14 colors



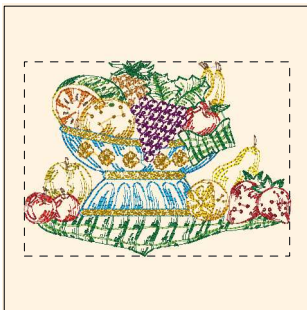
- 1. Med. Rose (Sul-R:1231)
- 2. Toast (Sul-R:1266)
- 3. Goldenrod (Sul-R:1024)
- 4. Nile Green (Sul-R:1274)
- 5. Xmas Green (Sul-R:1051)
- 6. Cinnamon (Sul-R:568)
- 7. Sunflower Gold (Sul-R:1333)
- 8. Poppy (Sul-R:1317)
- 9. Rust (Sul-R:1181)
- 10. (Sul-R:535)
- 11. Cornsilk (Sul-R:502)
- 12. Fuchsia (Sul-R:1192)
- 13. Duck Wing Blue (Sul-R:1250)

Kitchen_fruit_03-5x7.dst
6.90x5.00 inches; 20,029 stitches
13 thread changes; 13 colors



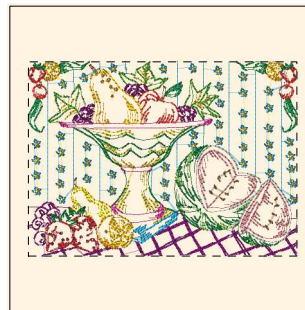
- 1. (Sul-R:1244)
- 2. Med. Rose (Sul-R:1231)
- 3. Drab Green (Sul-R:1228)
- 4. Duck Wing Blue (Sul-R:1250)
- 5. Goldenrod (Sul-R:1024)
- 6. Cinnamon (Sul-R:568)
- 7. Sunflower Gold (Sul-R:1333)
- 8. Poppy (Sul-R:1317)
- 9. Rust (Sul-R:1181)
- 10. Nile Green (Sul-R:1274)
- 11. Xmas Green (Sul-R:1051)
- 12. Toast (Sul-R:1266)
- 13. Chartreuse (Sul-R:1322)
- 14. Fuchsia (Sul-R:1192)
- 15. (Sul-R:1290)

Kitchen_fruit_04-5x7.dst
6.90x5.00 inches; 18,072 stitches
15 thread changes; 15 colors



- 1. Butterfly Gold (Sul-R:567)
- 2. Goldenrod (Sul-R:1024)
- 3. Mimosa Yellow (Sul-R:1187)
- 4. (Sul-R:1244)
- 5. Cinnamon (Sul-R:568)
- 6. Sunflower Gold (Sul-R:1333)
- 7. Poppy (Sul-R:1317)
- 8. Rust (Sul-R:1181)
- 9. Nile Green (Sul-R:1274)
- 10. Xmas Green (Sul-R:1051)
- 11. Toast (Sul-R:1266)
- 12. (Sul-R:1290)
- 13. Duck Wing Blue (Sul-R:1250)
- 14. Fuchsia (Sul-R:1192)

Kitchen_fruit_05-5x7.dst
6.83x5.00 inches; 21,507 stitches
14 thread changes; 14 colors



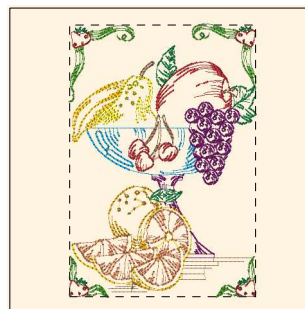
- 1. Mimosa Yellow (Sul-R:1187)
- 2. (Sul-R:1244)
- 3. Sunflower Gold (Sul-R:1333)
- 4. Poppy (Sul-R:1317)
- 5. Rust (Sul-R:1181)
- 6. Grass Green (Sul-R:1049)
- 7. Nile Green (Sul-R:1274)
- 8. Garden Green (Sul-R:569)
- 9. Xmas Green (Sul-R:1051)
- 10. Toast (Sul-R:1266)
- 11. Dewberry (Sul-R:1304)
- 12. Fuchsia (Sul-R:1192)
- 13. Med. Rose (Sul-R:1231)
- 14. Dk. Gray Khaki (Sul-R:1270)
- 15. Duck Wing Blue (Sul-R:1250)
- 16. Goldenrod (Sul-R:1024)

Kitchen_fruit_06-5x7.dst
6.91x5.00 inches; 20,426 stitches
16 thread changes; 16 colors



- 1. Taupe (Sul-R:1213)
- 2. Hyacinth (Sul-R:1296)
- 3. Med. Rose (Sul-R:1231)
- 4. Goldenrod (Sul-R:1024)
- 5. Sunflower Gold (Sul-R:1333)
- 6. Poppy (Sul-R:1317)
- 7. Rust (Sul-R:1181)
- 8. Nile Green (Sul-R:1274)
- 9. Garden Green (Sul-R:569)
- 10. Toast (Sul-R:1266)
- 11. Fuchsia (Sul-R:1192)
- 12. Putty (Sul-R:1508)
- 13. (Sul-R:1244)
- 14. Blackberry (Sul-R:1215)

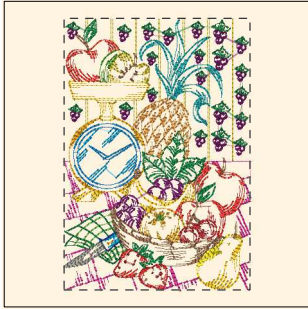
Kitchen_fruit_07-5x7.dst
4.83x7.00 inches; 16,974 stitches
14 thread changes; 14 colors



- 1. Duck Wing Blue (Sul-R:1250)
- 2. Toast (Sul-R:1266)
- 3. Grass Green (Sul-R:1049)
- 4. Rust (Sul-R:1181)
- 5. Garden Green (Sul-R:569)
- 6. Goldenrod (Sul-R:1024)
- 7. Mimosa Yellow (Sul-R:1187)
- 8. Sunflower Gold (Sul-R:1333)
- 9. Bittersweet (Sul-R:1313)
- 10. Fuchsia (Sul-R:1192)

Kitchen_fruit_08-5x7.dst
4.79x7.00 inches; 12,887 stitches
10 thread changes; 10 colors

Printed 2/2/2014



- 1. Duck Wing Blue (Sul-R:1250)
- 2. Goldenrod (Sul-R:1024)
- 3. Mimosa Yellow (Sul-R:1187)
- 4. (Sul-R:1244)
- 5. Sunflower Gold (Sul-R:1333)
- 6. Poppy (Sul-R:1317)
- 7. Rust (Sul-R:1181)
- 8. Grass Green (Sul-R:1049)
- 9. Nile Green (Sul-R:1274)
- 10. Garden Green (Sul-R:569)
- 11. Butterfly Gold (Sul-R:567)
- 12. Xmas Green (Sul-R:1051)
- 13. Toast (Sul-R:1266)
- 14. Gray (Sul-R:1219)
- 15. Fuchsia (Sul-R:1192)
- 16. Med. Rose (Sul-R:1231)
- 17. Team Blue (Sul-R:1535)
- 18. Putty (Sul-R:1508)
- 19. Wild Peacock (Sul-R:1513)
- 20. (Sul-R:1290)

Kitchen_fruit_09-5x7.dst

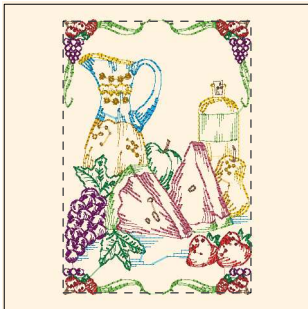
4.80x7.00 inches; 22,482 stitches
20 thread changes; 20 colors



- 1. Goldenrod (Sul-R:1024)
- 2. Sunflower Gold (Sul-R:1333)
- 3. Poppy (Sul-R:1317)
- 4. Deep Mauve (Sul-R:1237)
- 5. Rust (Sul-R:1181)
- 6. Garden Green (Sul-R:569)
- 7. Xmas Green (Sul-R:1051)
- 8. Drab Green (Sul-R:1228)
- 9. Toast (Sul-R:1266)
- 10. Dk. Ecru (Sul-R:1128)
- 11. Fuchsia (Sul-R:1192)
- 12. Duck Wing Blue (Sul-R:1250)
- 13. (Sul-R:1290)
- 14. Nile Green (Sul-R:1274)

Kitchen_fruit_10-5x7.dst

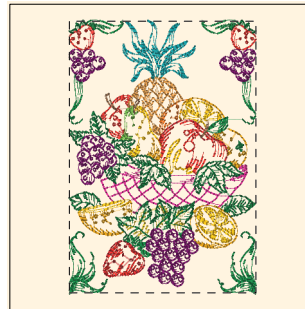
4.84x7.00 inches; 19,035 stitches
14 thread changes; 14 colors



- 1. Goldenrod (Sul-R:1024)
- 2. Sunflower Gold (Sul-R:1333)
- 3. Poppy (Sul-R:1317)
- 4. Rust (Sul-R:1181)
- 5. Nile Green (Sul-R:1274)
- 6. Garden Green (Sul-R:569)
- 7. Toast (Sul-R:1266)
- 8. Brick (Sul-R:1081)
- 9. Fuchsia (Sul-R:1192)
- 10. Duck Wing Blue (Sul-R:1250)

Kitchen_fruit_11-5x7.dst

4.83x7.00 inches; 16,716 stitches
10 thread changes; 10 colors



- 1. Med. Rose (Sul-R:1231)
- 2. Goldenrod (Sul-R:1024)
- 3. (Sul-R:1244)
- 4. Cinnamon (Sul-R:568)
- 5. Sunflower Gold (Sul-R:1333)
- 6. Poppy (Sul-R:1317)
- 7. Rust (Sul-R:1181)
- 8. Nile Green (Sul-R:1274)
- 9. Garden Green (Sul-R:569)
- 10. Xmas Green (Sul-R:1051)
- 11. Butterfly Gold (Sul-R:567)
- 12. Toast (Sul-R:1266)
- 13. Fuchsia (Sul-R:1192)
- 14. Wild Peacock (Sul-R:1513)

Kitchen_fruit_12-5x7.dst

4.80x7.00 inches; 21,532 stitches
14 thread changes; 14 colors