

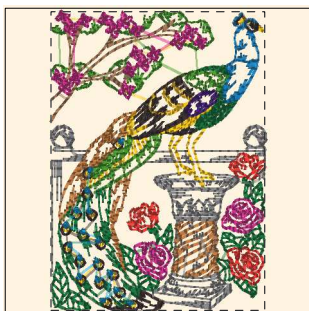
- 1. Putty (Sul-R:1508)
- 2. Duck Wing Blue (Sul-R:1250)
- 3. Tan (Sul-R:1126)
- 4. Sunflower Gold (Sul-R:1333)
- 5. Poppy (Sul-R:1317)
- 6. Grass Green (Sul-R:1049)
- 7. Xmas Green (Sul-R:1051)
- 8. Deep Eggplant (Sul-R:1301)
- 9. Gray (Sul-R:1219)
- 10. (Sul-R:1290)
- 11. Blackberry (Sul-R:1215)
- 12. Goldenrod (Sul-R:1024)

**Grand\_peacocks\_01-4x4.dst**  
2.80x3.85 inches; 13,266 stitches  
12 thread changes; 12 colors



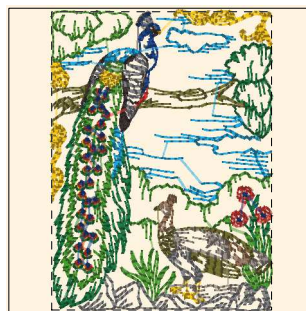
- 1. Nile Green (Sul-R:1274)
- 2. Xmas Green (Sul-R:1051)
- 3. Goldenrod (Sul-R:1024)
- 4. Poppy (Sul-R:1317)
- 5. Toast (Sul-R:1266)
- 6. Med. Aqua (Sul-R:640)
- 7. Gray (Sul-R:1219)
- 8. Med. Rose (Sul-R:1231)
- 9. (Sul-R:1290)
- 10. Blackberry (Sul-R:1215)

**Grand\_peacocks\_02-4x4.dst**  
2.74x3.84 inches; 8,642 stitches  
10 thread changes; 10 colors



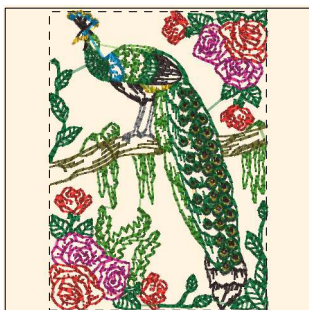
- 1. Goldenrod (Sul-R:1024)
- 2. Blackberry (Sul-R:1215)
- 3. Poppy (Sul-R:1317)
- 4. Tan (Sul-R:1126)
- 5. Grass Green (Sul-R:1049)
- 6. Xmas Green (Sul-R:1051)
- 7. Toast (Sul-R:1266)
- 8. Deep Eggplant (Sul-R:1301)
- 9. Gray (Sul-R:1219)
- 10. Med. Rose (Sul-R:1231)
- 11. (Sul-R:1290)
- 12. Duck Wing Blue (Sul-R:1250)

**Grand\_peacocks\_03-4x4.dst**  
2.76x3.85 inches; 15,287 stitches  
12 thread changes; 12 colors



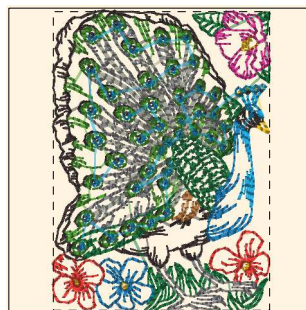
- 1. Goldenrod (Sul-R:1024)
- 2. Blackberry (Sul-R:1215)
- 3. Poppy (Sul-R:1317)
- 4. Grass Green (Sul-R:1049)
- 5. Xmas Green (Sul-R:1051)
- 6. Drab Green (Sul-R:1228)
- 7. Toast (Sul-R:1266)
- 8. Gray (Sul-R:1219)
- 9. Med. Taupe (Sul-R:1180)
- 10. Team Blue (Sul-R:1535)
- 11. Med. Dk. Ecru (Sul-R:1054)
- 12. Duck Wing Blue (Sul-R:1250)

**Grand\_peacocks\_04-4x4.dst**  
2.83x3.85 inches; 14,591 stitches  
12 thread changes; 12 colors



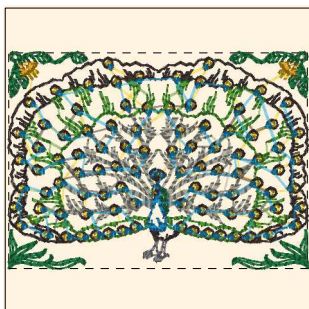
- 1. Goldenrod (Sul-R:1024)
- 2. Blackberry (Sul-R:1215)
- 3. Poppy (Sul-R:1317)
- 4. Grass Green (Sul-R:1049)
- 5. Nile Green (Sul-R:1274)
- 6. Xmas Green (Sul-R:1051)
- 7. Drab Green (Sul-R:1228)
- 8. Gray (Sul-R:1219)
- 9. Med. Rose (Sul-R:1231)
- 10. Duck Wing Blue (Sul-R:1250)

**Grand\_peacocks\_05-4x4.dst**  
2.80x3.85 inches; 14,657 stitches  
10 thread changes; 10 colors



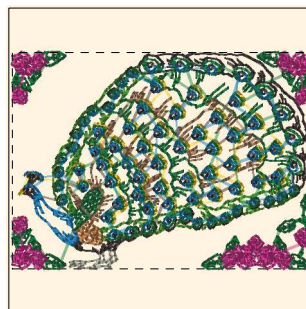
- 1. Goldenrod (Sul-R:1024)
- 2. Blackberry (Sul-R:1215)
- 3. Poppy (Sul-R:1317)
- 4. Tan (Sul-R:1126)
- 5. Grass Green (Sul-R:1049)
- 6. Nile Green (Sul-R:1274)
- 7. Xmas Green (Sul-R:1051)
- 8. Gray (Sul-R:1219)
- 9. Med. Rose (Sul-R:1231)
- 10. Putty (Sul-R:1508)
- 11. (Sul-R:1290)
- 12. Duck Wing Blue (Sul-R:1250)

**Grand\_peacocks\_06-4x4.dst**  
2.79x3.85 inches; 18,086 stitches  
12 thread changes; 12 colors



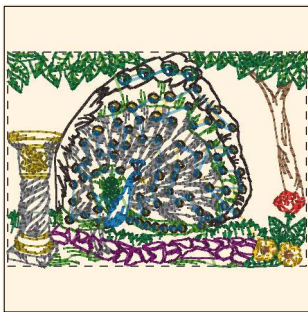
- 1. Goldenrod (Sul-R:1024)
- 2. Blackberry (Sul-R:1215)
- 3. Sunflower Gold (Sul-R:1333)
- 4. Grass Green (Sul-R:1049)
- 5. Xmas Green (Sul-R:1051)
- 6. Gray (Sul-R:1219)
- 7. Putty (Sul-R:1508)
- 8. (Sul-R:1290)
- 9. Duck Wing Blue (Sul-R:1250)

**Grand\_peacocks\_07-4x4.dst**  
3.85x2.78 inches; 17,844 stitches  
9 thread changes; 9 colors



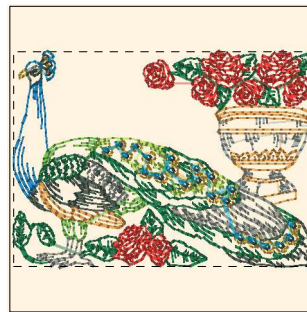
- 1. Goldenrod (Sul-R:1024)
- 2. Blackberry (Sul-R:1215)
- 3. Tan (Sul-R:1126)
- 4. Grass Green (Sul-R:1049)
- 5. Garden Green (Sul-R:569)
- 6. Xmas Green (Sul-R:1051)
- 7. Toast (Sul-R:1266)
- 8. Med. Rose (Sul-R:1231)
- 9. Putty (Sul-R:1508)
- 10. (Sul-R:1290)

**Grand\_peacocks\_08-4x4.dst**  
3.85x2.79 inches; 17,836 stitches  
10 thread changes; 10 colors



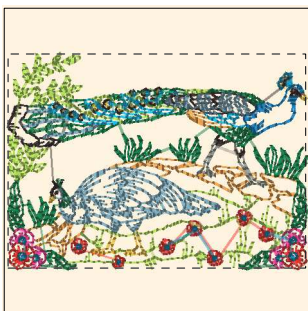
- 1. Goldenrod (Sul-R:1024)
- 2. Blackberry (Sul-R:1215)
- 3. Poppy (Sul-R:1317)
- 4. Tan (Sul-R:1126)
- 5. (Sul-R:1262)
- 6. Grass Green (Sul-R:1049)
- 7. Xmas Green (Sul-R:1051)
- 8. Toast (Sul-R:1266)
- 9. Gray (Sul-R:1219)
- 10. Fuchsia (Sul-R:1192)
- 11. (Sul-R:1290)

**Grand\_peacocks\_09-4x4.dst**  
 3.85x2.76 inches; 18,537 stitches  
 11 thread changes; 11 colors



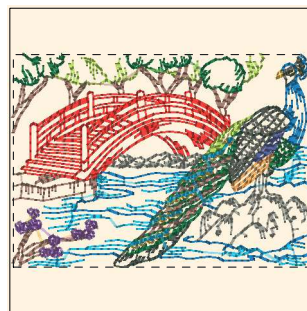
- 1. (Sul-R:1260)
- 2. Evergreen (Sul-R:1271)
- 3. Poppy (Sul-R:1317)
- 4. Butterfly Gold (Sul-R:567)
- 5. Nile Green (Sul-R:1274)
- 6. Emerald Green (Sul-R:1079)
- 7. Deep Chartreuse (Sul-R:1332)
- 8. (Sul-R:610)
- 9. Dk. Gray Khaki (Sul-R:1270)
- 10. (Sul-R:1290)
- 11. Duck Wing Blue (Sul-R:1250)
- 12. Bright Peacock (Sul-R:1252)

**Grand\_peacocks\_10-4x4.dst**  
 3.84x2.77 inches; 12,024 stitches  
 12 thread changes; 12 colors



- 1. (Sul-R:1260)
- 2. Blackberry (Sul-R:1215)
- 3. Poppy (Sul-R:1317)
- 4. Butterfly Gold (Sul-R:567)
- 5. Emerald Green (Sul-R:1079)
- 6. Deep Chartreuse (Sul-R:1332)
- 7. (Sul-R:610)
- 8. Deep Rose (Sul-R:1511)
- 9. Med. Jade (Sul-R:1205)
- 10. (Sul-R:1290)
- 11. Dk. Turquoise (Sul-R:1096)
- 12. Bright Peacock (Sul-R:1252)

**Grand\_peacocks\_11-4x4.dst**  
 3.84x2.76 inches; 12,243 stitches  
 12 thread changes; 12 colors



- 1. (Sul-R:1260)
- 2. Evergreen (Sul-R:1271)
- 3. Poppy (Sul-R:1317)
- 4. Butterfly Gold (Sul-R:567)
- 5. Emerald Green (Sul-R:1079)
- 6. Deep Chartreuse (Sul-R:1332)
- 7. (Sul-R:1269)
- 8. (Sul-R:610)
- 9. Med. Purple (Sul-R:1032)
- 10. Dusty Navy (Sul-R:1198)
- 11. (Sul-R:1290)
- 12. Bright Peacock (Sul-R:1252)

**Grand\_peacocks\_12-4x4.dst**  
 3.85x2.74 inches; 11,790 stitches  
 12 thread changes; 12 colors