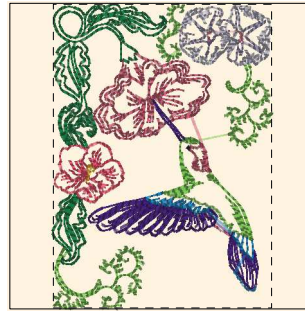


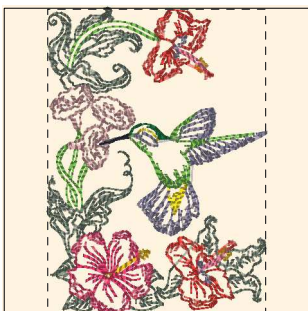
- 1. Blue Black (Sul-R:1182)
- 2. Goldenrod (Sul-R:1024)
- 3. Nile Green (Sul-R:1274)
- 4. Khaki (Sul-R:1212)
- 5. Petal Pink (Sul-R:1307)
- 6. Red Geranium (Sul-R:1188)
- 7. Deep Eggplant (Sul-R:1301)
- 8. Sterling (Sul-R:1295)
- 9. Coral (Sul-R:1154)
- 10. Duck Wing Blue (Sul-R:1250)

Hummingbirds_001-4x4.dst
2.84x3.91 inches; 10,317 stitches
10 thread changes; 10 colors



- 1. Blue Black (Sul-R:1182)
- 2. Goldenrod (Sul-R:1024)
- 3. Nile Green (Sul-R:1274)
- 4. Xmas Green (Sul-R:1051)
- 5. Deep Coral (Sul-R:1257)
- 6. Brick (Sul-R:1081)
- 7. Deep Eggplant (Sul-R:1301)
- 8. Dk. Mauve (Sul-R:1119)
- 9. Sterling (Sul-R:1295)
- 10. (Sul-R:1290)
- 11. Nickel Gray (Sul-R:1328)

Hummingbirds_002-4x4.dst
2.81x3.91 inches; 8,894 stitches
11 thread changes; 11 colors



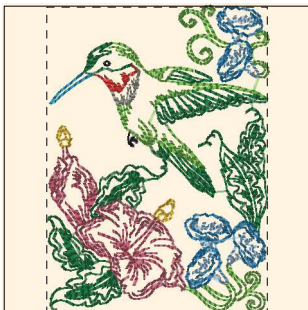
- 1. Blue Black (Sul-R:1182)
- 2. Goldenrod (Sul-R:1024)
- 3. Mimosa Yellow (Sul-R:1187)
- 4. Poppy (Sul-R:1317)
- 5. Nile Green (Sul-R:1274)
- 6. Xmas Green (Sul-R:1051)
- 7. Khaki (Sul-R:1212)
- 8. Petal Pink (Sul-R:1307)
- 9. Coral (Sul-R:1154)
- 10. Sterling (Sul-R:1295)
- 11. Taupe (Sul-R:1213)

Hummingbirds_003-4x4.dst
2.81x3.91 inches; 8,899 stitches
11 thread changes; 11 colors



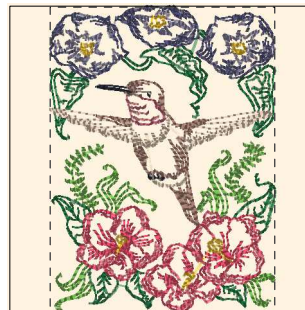
- 1. Blue Black (Sul-R:1182)
- 2. Goldenrod (Sul-R:1024)
- 3. Mimosa Yellow (Sul-R:1187)
- 4. Nile Green (Sul-R:1274)
- 5. Xmas Green (Sul-R:1051)
- 6. Mink Brown (Sul-R:1267)
- 7. Toast (Sul-R:1266)
- 8. Brick (Sul-R:1081)
- 9. Red Geranium (Sul-R:1188)
- 10. Bittersweet (Sul-R:1313)
- 11. Deep Slate Gray (Sul-R:1294)
- 12. Sterling (Sul-R:1295)
- 13. Duck Wing Blue (Sul-R:1250)

Hummingbirds_004-4x4.dst
2.87x3.92 inches; 7,867 stitches
13 thread changes; 13 colors



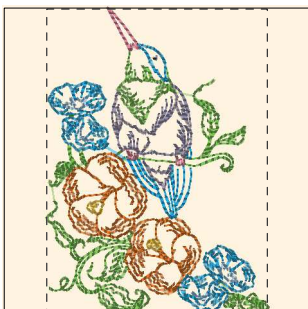
- 1. Blue Black (Sul-R:1182)
- 2. Goldenrod (Sul-R:1024)
- 3. Poppy (Sul-R:1317)
- 4. Nile Green (Sul-R:1274)
- 5. Xmas Green (Sul-R:1051)
- 6. Brick (Sul-R:1081)
- 7. Putty (Sul-R:1508)
- 8. (Sul-R:1290)
- 9. Dk. Turquoise (Sul-R:1096)
- 10. Med. Powder Blue (Sul-R:1201)

Hummingbirds_005-4x4.dst
2.84x3.91 inches; 9,532 stitches
10 thread changes; 10 colors



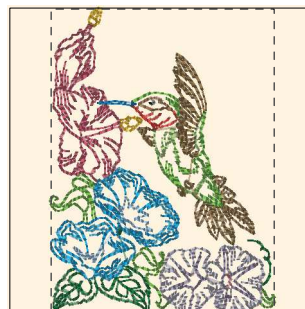
- 1. Blue Black (Sul-R:1182)
- 2. Goldenrod (Sul-R:1024)
- 3. Xmas Green (Sul-R:1051)
- 4. Nile Green (Sul-R:1274)
- 5. Deep Coral (Sul-R:1257)
- 6. (Sul-R:1269)
- 7. Brick (Sul-R:1081)
- 8. Deep Slate Gray (Sul-R:1294)
- 9. Sterling (Sul-R:1295)
- 10. Deep Ecru (Sul-R:1149)

Hummingbirds_006-4x4.dst
2.89x3.91 inches; 10,892 stitches
10 thread changes; 10 colors



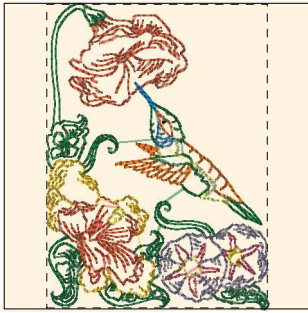
- 1. Blue Black (Sul-R:1182)
- 2. Goldenrod (Sul-R:1024)
- 3. Cinnamon (Sul-R:568)
- 4. Nile Green (Sul-R:1274)
- 5. Dk. Mauve (Sul-R:1119)
- 6. Sterling (Sul-R:1295)
- 7. Med. Powder Blue (Sul-R:1201)
- 8. Duck Wing Blue (Sul-R:1250)

Hummingbirds_007-4x4.dst
2.84x3.91 inches; 6,854 stitches
8 thread changes; 8 colors



- 1. Blue Black (Sul-R:1182)
- 2. Goldenrod (Sul-R:1024)
- 3. Poppy (Sul-R:1317)
- 4. Nile Green (Sul-R:1274)
- 5. Xmas Green (Sul-R:1051)
- 6. Toast (Sul-R:1266)
- 7. Burnt Toast (Sul-R:1265)
- 8. Brick (Sul-R:1081)
- 9. Dk. Mauve (Sul-R:1119)
- 10. Chartreuse (Sul-R:1322)
- 11. Sterling (Sul-R:1295)
- 12. (Sul-R:1290)
- 13. Nickel Gray (Sul-R:1328)
- 14. Med. Powder Blue (Sul-R:1201)
- 15. Duck Wing Blue (Sul-R:1250)

Hummingbirds_008-4x4.dst
2.87x3.91 inches; 7,733 stitches
15 thread changes; 15 colors



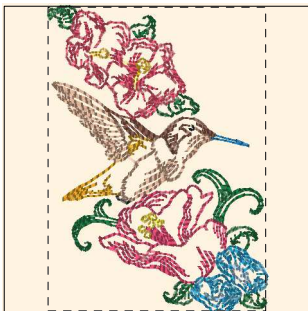
- 1. Blue Black (Sul-R:1182)
- 2. Goldenrod (Sul-R:1024)
- 3. Mimosa Yellow (Sul-R:1187)
- 4. Cinnamon (Sul-R:568)
- 5. Poppy (Sul-R:1317)
- 6. Maple (Sul-R:1021)
- 7. Xmas Green (Sul-R:1051)
- 8. Brick (Sul-R:1081)
- 9. Lt. Avocado (Sul-R:1209)
- 10. Sterling (Sul-R:1295)
- 11. (Sul-R:1290)

Hummingbirds_009-4x4.dst
 2.84x3.91 inches; 7,398 stitches
 11 thread changes; 11 colors



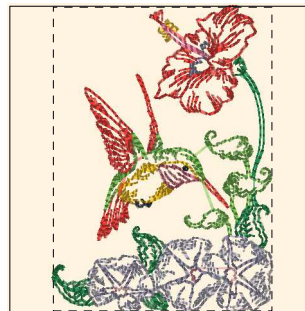
- 1. Blue Black (Sul-R:1182)
- 2. Goldenrod (Sul-R:1024)
- 3. Sunflower Gold (Sul-R:1333)
- 4. Poppy (Sul-R:1317)
- 5. Nile Green (Sul-R:1274)
- 6. Xmas Green (Sul-R:1051)
- 7. Maize Yellow (Sul-R:1167)
- 8. Dk. Mauve (Sul-R:1119)
- 9. Sterling (Sul-R:1295)
- 10. Nickel Gray (Sul-R:1328)

Hummingbirds_010-4x4.dst
 2.87x3.91 inches; 7,080 stitches
 10 thread changes; 10 colors



- 1. Blue Black (Sul-R:1182)
- 2. Goldenrod (Sul-R:1024)
- 3. Mimosa Yellow (Sul-R:1187)
- 4. Sunflower Gold (Sul-R:1333)
- 5. Xmas Green (Sul-R:1051)
- 6. Mink Brown (Sul-R:1267)
- 7. Deep Coral (Sul-R:1257)
- 8. Red Geranium (Sul-R:1188)
- 9. Dk. Ecru (Sul-R:1128)
- 10. (Sul-R:1290)
- 11. Med. Powder Blue (Sul-R:1201)
- 12. Duck Wing Blue (Sul-R:1250)

Hummingbirds_011-4x4.dst
 2.81x3.91 inches; 7,201 stitches
 12 thread changes; 12 colors



- 1. Blue Black (Sul-R:1182)
- 2. Goldenrod (Sul-R:1024)
- 3. Poppy (Sul-R:1317)
- 4. Nile Green (Sul-R:1274)
- 5. Garden Green (Sul-R:569)
- 6. Brick (Sul-R:1081)
- 7. Dk. Mauve (Sul-R:1119)
- 8. Coral (Sul-R:1154)
- 9. Sterling (Sul-R:1295)
- 10. Nickel Gray (Sul-R:1328)

Hummingbirds_012-4x4.dst
 2.82x3.91 inches; 7,538 stitches
 10 thread changes; 10 colors