



- 1. Lt. Teal (Sul-R:1045)
- 2. Pale Yellow (Sul-R:1061)
- 3. Lemon Yellow (Sul-R:1067)
- 4. Primrose (Sul-R:1066)
- 5. Dk. Ecu (Sul-R:1128)
- 6. (Sul-R:1260)
- 7. Burgundy (Sul-R:1034)
- 8. Chartreuse (Sul-R:1322)
- 9. Pistachio (Sul-R:1276)
- 10. Pale Yellow-Green (Sul-R:1063)
- 11. Bright White (Sul-R:1001)
- 12. (Sul-R:1320)
- 13. Khaki (Sul-R:1212)

Kitchen_delights_01_6x10.dst
6.01x6.35 inches; 46,091 stitches
13 thread changes; 13 colors



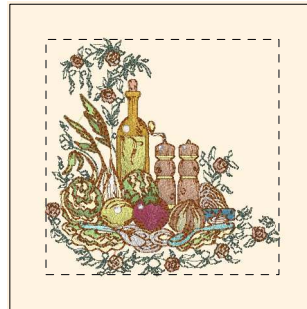
- 1. Burgundy (Sul-R:1034)
- 2. (Sul-R:1260)
- 3. Dk. Ecu (Sul-R:1128)
- 4. Brick (Sul-R:1081)
- 5. Pistachio (Sul-R:1276)
- 6. Brick (Sul-R:1081)
- 7. Chartreuse (Sul-R:1322)
- 8. Lemon Yellow (Sul-R:1067)
- 9. Primrose (Sul-R:1066)
- 10. Pale Yellow (Sul-R:1061)
- 11. Lt. Teal (Sul-R:1045)
- 12. Bright White (Sul-R:1001)
- 13. Med. Weathered Blue (Sul-R:1172)
- 14. Pale Yellow-Green (Sul-R:1063)
- 15. Khaki (Sul-R:1212)
- 16. (Sul-R:1320)

Kitchen_delights_02_6x10.dst
6.02x7.15 inches; 54,498 stitches
16 thread changes; 15 colors



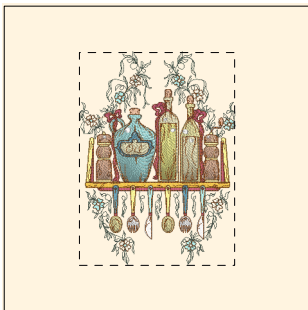
- 1. Burgundy (Sul-R:1034)
- 2. (Sul-R:1260)
- 3. Dk. Ecu (Sul-R:1128)
- 4. Chartreuse (Sul-R:1322)
- 5. Lemon Yellow (Sul-R:1067)
- 6. Med. Weathered Blue (Sul-R:1172)
- 7. Primrose (Sul-R:1066)
- 8. Pale Yellow (Sul-R:1061)
- 9. Lt. Teal (Sul-R:1045)
- 10. Bright White (Sul-R:1001)
- 11. Pistachio (Sul-R:1276)
- 12. Pale Yellow-Green (Sul-R:1063)
- 13. Khaki (Sul-R:1212)
- 14. (Sul-R:1320)

Kitchen_delights_03_6x10.dst
6.16x6.00 inches; 49,013 stitches
14 thread changes; 14 colors



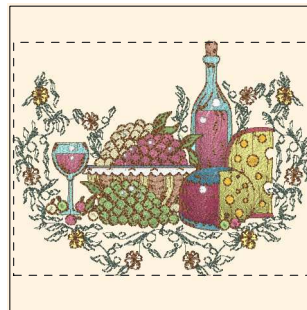
- 1. Burgundy (Sul-R:1034)
- 2. (Sul-R:1260)
- 3. Dk. Ecu (Sul-R:1128)
- 4. Chartreuse (Sul-R:1322)
- 5. Lemon Yellow (Sul-R:1067)
- 6. Pale Yellow (Sul-R:1061)
- 7. Med. Peach (Sul-R:1015)
- 8. Pale Yellow-Green (Sul-R:1063)
- 9. Lt. Teal (Sul-R:1045)
- 10. Bright White (Sul-R:1001)
- 11. Pistachio (Sul-R:1276)
- 12. Med. Weathered Blue (Sul-R:1172)
- 13. Primrose (Sul-R:1066)
- 14. Khaki (Sul-R:1212)
- 15. (Sul-R:1320)

Kitchen_delights_04_6x10.dst
6.00x6.06 inches; 41,898 stitches
15 thread changes; 15 colors



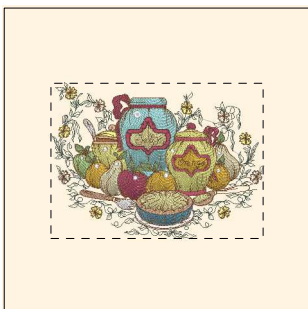
- 1. Dk. Ecu (Sul-R:1128)
- 2. Lemon Yellow (Sul-R:1067)
- 3. Primrose (Sul-R:1066)
- 4. Pale Yellow (Sul-R:1061)
- 5. Lt. Teal (Sul-R:1045)
- 6. Bright White (Sul-R:1001)
- 7. Burgundy (Sul-R:1034)
- 8. (Sul-R:1260)
- 9. Med. Weathered Blue (Sul-R:1172)
- 10. Pale Yellow-Green (Sul-R:1063)
- 11. Khaki (Sul-R:1212)
- 12. (Sul-R:1320)

Kitchen_delights_05_6x10.dst
6.00x8.22 inches; 46,122 stitches
12 thread changes; 12 colors



- 1. Burgundy (Sul-R:1034)
- 2. (Sul-R:1260)
- 3. Dk. Ecu (Sul-R:1128)
- 4. Chartreuse (Sul-R:1322)
- 5. Dk. Mauve (Sul-R:1119)
- 6. Lemon Yellow (Sul-R:1067)
- 7. Med. Weathered Blue (Sul-R:1172)
- 8. Pale Yellow (Sul-R:1061)
- 9. Lt. Teal (Sul-R:1045)
- 10. Pistachio (Sul-R:1276)
- 11. Primrose (Sul-R:1066)
- 12. Pale Yellow-Green (Sul-R:1063)
- 13. Bright White (Sul-R:1001)
- 14. Khaki (Sul-R:1212)
- 15. Nutmeg (Sul-R:521)

Kitchen_delights_06_6x10.dst
7.67x6.00 inches; 52,953 stitches
15 thread changes; 15 colors



- 1. Burgundy (Sul-R:1034)
- 2. (Sul-R:1260)
- 3. Dk. Ecu (Sul-R:1128)
- 4. Pistachio (Sul-R:1276)
- 5. Chartreuse (Sul-R:1322)
- 6. Lemon Yellow (Sul-R:1067)
- 7. Med. Weathered Blue (Sul-R:1172)
- 8. Primrose (Sul-R:1066)
- 9. Pale Yellow (Sul-R:1061)
- 10. Lt. Teal (Sul-R:1045)
- 11. Burgundy (Sul-R:1034)
- 12. Bright White (Sul-R:1001)
- 13. Pale Yellow-Green (Sul-R:1063)
- 14. Khaki (Sul-R:1212)
- 15. Nutmeg (Sul-R:521)

Kitchen_delights_07_6x10.dst
8.19x6.00 inches; 65,553 stitches
15 thread changes; 14 colors



- 1. Burgundy (Sul-R:1034)
- 2. (Sul-R:1260)
- 3. Dk. Ecu (Sul-R:1128)
- 4. Pistachio (Sul-R:1276)
- 5. Chartreuse (Sul-R:1322)
- 6. Lemon Yellow (Sul-R:1067)
- 7. Primrose (Sul-R:1066)
- 8. Pale Yellow (Sul-R:1061)
- 9. Med. Weathered Blue (Sul-R:1172)
- 10. Med. Peach (Sul-R:1015)
- 11. Pale Yellow-Green (Sul-R:1063)
- 12. Bright White (Sul-R:1001)
- 13. Moss Green (Sul-R:630)
- 14. Nutmeg (Sul-R:521)

Kitchen_delights_08_6x10.dst
5.98x5.96 inches; 34,768 stitches
14 thread changes; 14 colors



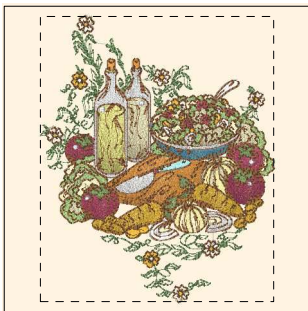
- 1. Burgundy (Sul-R:1034)
- 2. (Sul-R:1260)
- 3. Chartreuse (Sul-R:1322)
- 4. Dk. Mauve (Sul-R:1119)
- 5. Lemon Yellow (Sul-R:1067)
- 6. Primrose (Sul-R:1066)
- 7. Pale Yellow (Sul-R:1061)
- 8. Lt. Teal (Sul-R:1045)
- 9. Bright White (Sul-R:1001)
- 10. Nutmeg (Sul-R:521)
- 11. Butterfly Gold (Sul-R:567)
- 12. Pistachio (Sul-R:1276)
- 13. Med. Weathered Blue (Sul-R:1172)
- 14. Pale Yellow-Green (Sul-R:1063)
- 15. Moss Green (Sul-R:630)
- 16. Nutmeg (Sul-R:521)

Kitchen_delights_09_6x10.dst
 6.00x6.52 inches; 46,938 stitches
 16 thread changes; 15 colors



- 1. Burgundy (Sul-R:1034)
- 2. (Sul-R:1260)
- 3. Butterfly Gold (Sul-R:567)
- 4. Dk. Mauve (Sul-R:1119)
- 5. Lemon Yellow (Sul-R:1067)
- 6. Med. Weathered Blue (Sul-R:1172)
- 7. Primrose (Sul-R:1066)
- 8. Pale Yellow (Sul-R:1061)
- 9. Med. Peach (Sul-R:1015)
- 10. Pale Yellow-Green (Sul-R:1063)
- 11. Lt. Teal (Sul-R:1045)
- 12. Bright White (Sul-R:1001)
- 13. Pistachio (Sul-R:1276)
- 14. Chartreuse (Sul-R:1322)
- 15. Moss Green (Sul-R:630)
- 16. Nutmeg (Sul-R:521)

Kitchen_delights_10_6x10.dst
 6.00x8.07 inches; 44,202 stitches
 16 thread changes; 16 colors



- 1. Burgundy (Sul-R:1034)
- 2. (Sul-R:1260)
- 3. Butterfly Gold (Sul-R:567)
- 4. Pistachio (Sul-R:1276)
- 5. Chartreuse (Sul-R:1322)
- 6. Lemon Yellow (Sul-R:1067)
- 7. Med. Weathered Blue (Sul-R:1172)
- 8. Pale Yellow (Sul-R:1061)
- 9. Bright White (Sul-R:1001)
- 10. Primrose (Sul-R:1066)
- 11. Pale Yellow-Green (Sul-R:1063)
- 12. Lt. Teal (Sul-R:1045)
- 13. Moss Green (Sul-R:630)
- 14. Nutmeg (Sul-R:521)

Kitchen_delights_11_6x10.dst
 6.01x7.34 inches; 60,592 stitches
 14 thread changes; 14 colors



- 1. Burgundy (Sul-R:1034)
- 2. (Sul-R:1260)
- 3. Butterfly Gold (Sul-R:567)
- 4. Lemon Yellow (Sul-R:1067)
- 5. Med. Weathered Blue (Sul-R:1172)
- 6. Primrose (Sul-R:1066)
- 7. Med. Peach (Sul-R:1015)
- 8. Pale Yellow-Green (Sul-R:1063)
- 9. Bright White (Sul-R:1001)
- 10. Pistachio (Sul-R:1276)
- 11. Lt. Teal (Sul-R:1045)
- 12. Moss Green (Sul-R:630)
- 13. Nutmeg (Sul-R:521)

Kitchen_delights_12_6x10.dst
 6.00x6.14 inches; 48,324 stitches
 13 thread changes; 13 colors