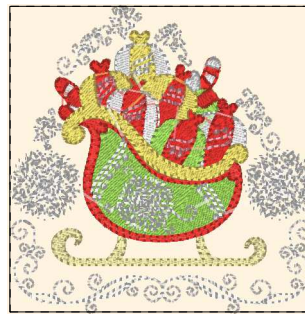




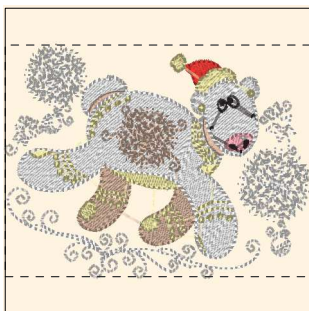
- 1. Poppy (Sul-R:1317)
- 2. Tan (Sul-R:1126)
- 3. Primrose (Sul-R:1066)
- 4. Apricot (Sul-R:1239)
- 5. Primrose (Sul-R:1066)
- 6. Bright White (Sul-R:1001)
- 7. Black Cherry (Sul-R:1183)

**North\_pole\_christmas\_01-5x7.dst**  
3.27x3.94 inches; 20,388 stitches  
7 thread changes; 6 colors



- 1. Bright White (Sul-R:1001)
- 2. Primrose (Sul-R:1066)
- 3. Lime Green (Sul-R:1510)
- 4. Poppy (Sul-R:1317)
- 5. Maize Yellow (Sul-R:1167)
- 6. Pastel Coral (Sul-R:1016)
- 7. Bright White (Sul-R:1001)

**North\_pole\_christmas\_02-5x7.dst**  
3.93x3.94 inches; 22,972 stitches  
7 thread changes; 6 colors



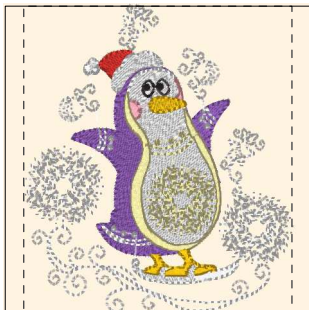
- 1. Poppy (Sul-R:1317)
- 2. Bright White (Sul-R:1001)
- 3. Med. Dk. Ecru (Sul-R:1054)
- 4. Primrose (Sul-R:1066)
- 5. Pastel Coral (Sul-R:1016)
- 6. Black Cherry (Sul-R:1183)
- 7. Bright White (Sul-R:1001)

**North\_pole\_christmas\_03-5x7.dst**  
3.94x2.99 inches; 22,957 stitches  
7 thread changes; 6 colors



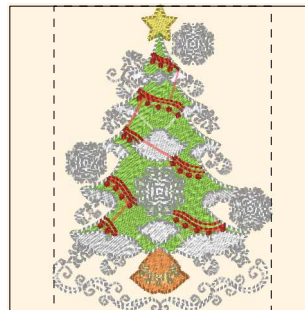
- 1. Poppy (Sul-R:1317)
- 2. Maize Yellow (Sul-R:1167)
- 3. Gray (Sul-R:1219)
- 4. (Sul-R:610)
- 5. Primrose (Sul-R:1066)
- 6. Coral Reef (Sul-R:1258)
- 7. Pastel Coral (Sul-R:1016)
- 8. Bright White (Sul-R:1001)
- 9. Blackberry (Sul-R:1215)
- 10. Black Cherry (Sul-R:1183)

**North\_pole\_christmas\_04-5x7.dst**  
3.21x3.94 inches; 26,293 stitches  
10 thread changes; 10 colors



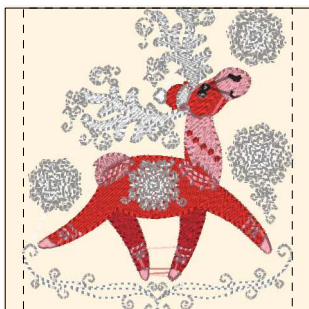
- 1. Poppy (Sul-R:1317)
- 2. Med. Purple (Sul-R:1032)
- 3. Bright White (Sul-R:1001)
- 4. Pastel Coral (Sul-R:1016)
- 5. Primrose (Sul-R:1066)
- 6. Black Cherry (Sul-R:1183)
- 7. Goldenrod (Sul-R:1024)

**North\_pole\_christmas\_05-5x7.dst**  
3.45x3.94 inches; 19,330 stitches  
7 thread changes; 7 colors



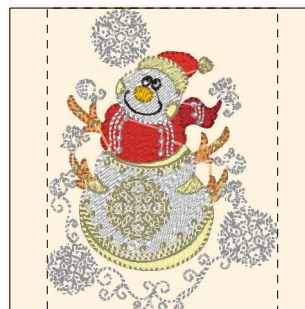
- 1. Apricot (Sul-R:1239)
- 2. Maize Yellow (Sul-R:1167)
- 3. Lime Green (Sul-R:1510)
- 4. Bright White (Sul-R:1001)
- 5. Poppy (Sul-R:1317)
- 6. Primrose (Sul-R:1066)

**North\_pole\_christmas\_06-5x7.dst**  
2.80x3.93 inches; 24,219 stitches  
6 thread changes; 6 colors



- 1. Rust (Sul-R:1181)
- 2. Poppy (Sul-R:1317)
- 3. Pastel Coral (Sul-R:1016)
- 4. Poppy (Sul-R:1317)
- 5. Bright White (Sul-R:1001)
- 6. Black Cherry (Sul-R:1183)

**North\_pole\_christmas\_07-5x7.dst**  
3.46x3.94 inches; 21,627 stitches  
6 thread changes; 5 colors



- 1. Apricot (Sul-R:1239)
- 2. Rust (Sul-R:1181)
- 3. Poppy (Sul-R:1317)
- 4. Bright White (Sul-R:1001)
- 5. Goldenrod (Sul-R:1024)
- 6. Primrose (Sul-R:1066)
- 7. Black Cherry (Sul-R:1183)

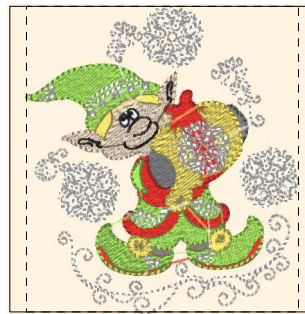
**North\_pole\_christmas\_08-5x7.dst**  
2.97x3.94 inches; 21,822 stitches  
7 thread changes; 7 colors



- 1. Lime Green (Sul-R:1510)
- 2. Poppy (Sul-R:1317)
- 3. Pastel Coral (Sul-R:1016)
- 4. Bright White (Sul-R:1001)
- 5. Med. Dk. Ecru (Sul-R:1054)
- 6. Primrose (Sul-R:1066)
- 7. Black Cherry (Sul-R:1183)

**North\_pole\_christmas\_09-5x7.dst**

3.94x3.86 inches; 24,010 stitches  
7 thread changes; 7 colors



- 1. Gray (Sul-R:1219)
- 2. Poppy (Sul-R:1317)
- 3. Lime Green (Sul-R:1510)
- 4. Coral Reef (Sul-R:1258)
- 5. Maize Yellow (Sul-R:1167)
- 6. Bright White (Sul-R:1001)
- 7. Black Cherry (Sul-R:1183)

**North\_pole\_christmas\_10-5x7.dst**

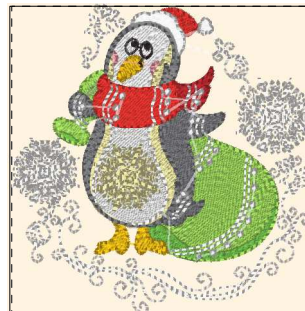
3.51x3.94 inches; 22,051 stitches  
7 thread changes; 7 colors



- 1. Rust (Sul-R:1181)
- 2. Lime Green (Sul-R:1510)
- 3. Bright White (Sul-R:1001)
- 4. Apricot (Sul-R:1239)
- 5. Primrose (Sul-R:1066)
- 6. Poppy (Sul-R:1317)
- 7. Bright White (Sul-R:1001)
- 8. Goldenrod (Sul-R:1024)
- 9. Black Cherry (Sul-R:1183)
- 10. Pastel Coral (Sul-R:1016)

**North\_pole\_christmas\_11-5x7.dst**

3.21x3.94 inches; 21,093 stitches  
10 thread changes; 9 colors



- 1. Nile Green (Sul-R:1274)
- 2. Lime Green (Sul-R:1510)
- 3. Bright White (Sul-R:1001)
- 4. Goldenrod (Sul-R:1024)
- 5. Rust (Sul-R:1181)
- 6. Pastel Coral (Sul-R:1016)
- 7. Primrose (Sul-R:1066)
- 8. Gray (Sul-R:1219)
- 9. Black Cherry (Sul-R:1183)
- 10. Poppy (Sul-R:1317)
- 11. Bright White (Sul-R:1001)

**North\_pole\_christmas\_12-5x7.dst**

3.89x3.94 inches; 26,231 stitches  
11 thread changes; 10 colors