



- 1. Poppy (Sul-R:1317)
- 2. Tan (Sul-R:1126)
- 3. Primrose (Sul-R:1066)
- 4. Apricot (Sul-R:1239)
- 5. Primrose (Sul-R:1066)
- 6. Bright White (Sul-R:1001)
- 7. Black Cherry (Sul-R:1183)

North_pole_christmas_01-6x10.dst

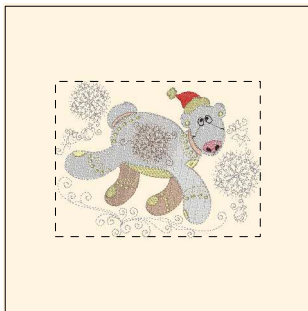
6.00x7.23 inches; 33,357 stitches
7 thread changes; 6 colors



- 1. Primrose (Sul-R:1066)
- 2. Lime Green (Sul-R:1510)
- 3. Poppy (Sul-R:1317)
- 4. Maize Yellow (Sul-R:1167)
- 5. Pastel Coral (Sul-R:1016)
- 6. Bright White (Sul-R:1001)

North_pole_christmas_02-6x10.dst

6.00x6.02 inches; 34,344 stitches
6 thread changes; 6 colors



- 1. Poppy (Sul-R:1317)
- 2. Bright White (Sul-R:1001)
- 3. Med. Dk. Ecrú (Sul-R:1054)
- 4. Primrose (Sul-R:1066)
- 5. Pastel Coral (Sul-R:1016)
- 6. Black Cherry (Sul-R:1183)
- 7. Bright White (Sul-R:1001)

North_pole_christmas_03-6x10.dst

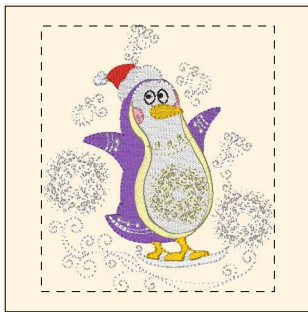
7.91x6.00 inches; 40,742 stitches
7 thread changes; 6 colors



- 1. Poppy (Sul-R:1317)
- 2. Maize Yellow (Sul-R:1167)
- 3. Gray (Sul-R:1219)
- 4. (Sul-R:610)
- 5. Primrose (Sul-R:1066)
- 6. Coral Reef (Sul-R:1258)
- 7. Pastel Coral (Sul-R:1016)
- 8. Bright White (Sul-R:1001)
- 9. Blackberry (Sul-R:1215)
- 10. Black Cherry (Sul-R:1183)

North_pole_christmas_04-6x10.dst

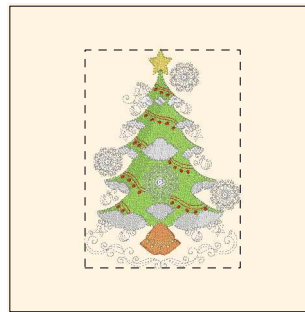
6.00x7.35 inches; 43,716 stitches
10 thread changes; 10 colors



- 1. Poppy (Sul-R:1317)
- 2. Med. Purple (Sul-R:1032)
- 3. Bright White (Sul-R:1001)
- 4. Pastel Coral (Sul-R:1016)
- 5. Primrose (Sul-R:1066)
- 6. Black Cherry (Sul-R:1183)
- 7. Goldenrod (Sul-R:1024)

North_pole_christmas_05-6x10.dst

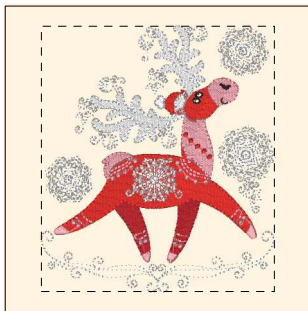
6.00x6.84 inches; 28,819 stitches
7 thread changes; 7 colors



- 1. Apricot (Sul-R:1239)
- 2. Maize Yellow (Sul-R:1167)
- 3. Lime Green (Sul-R:1510)
- 4. Bright White (Sul-R:1001)
- 5. Poppy (Sul-R:1317)
- 6. Primrose (Sul-R:1066)

North_pole_christmas_06-6x10.dst

6.00x8.43 inches; 44,549 stitches
6 thread changes; 6 colors



- 1. Rust (Sul-R:1181)
- 2. Poppy (Sul-R:1317)
- 3. Pastel Coral (Sul-R:1016)
- 4. Poppy (Sul-R:1317)
- 5. Bright White (Sul-R:1001)
- 6. Black Cherry (Sul-R:1183)

North_pole_christmas_07-6x10.dst

6.00x6.83 inches; 33,676 stitches
6 thread changes; 5 colors



- 1. Apricot (Sul-R:1239)
- 2. Rust (Sul-R:1181)
- 3. Poppy (Sul-R:1317)
- 4. Bright White (Sul-R:1001)
- 5. Goldenrod (Sul-R:1024)
- 6. Primrose (Sul-R:1066)
- 7. Black Cherry (Sul-R:1183)

North_pole_christmas_08-6x10.dst

6.00x7.95 inches; 38,432 stitches
7 thread changes; 7 colors



- 1. Lime Green (Sul-R:1510)
- 2. Poppy (Sul-R:1317)
- 3. Pastel Coral (Sul-R:1016)
- 4. Bright White (Sul-R:1001)
- 5. Med. Dk. Ecru (Sul-R:1054)
- 6. Primrose (Sul-R:1066)
- 7. Black Cherry (Sul-R:1183)

North_pole_christmas_09-6x10.dst

6.13x6.00 inches; 32,548 stitches
7 thread changes; 7 colors



- 1. Gray (Sul-R:1219)
- 2. Poppy (Sul-R:1317)
- 3. Lime Green (Sul-R:1510)
- 4. Coral Reef (Sul-R:1258)
- 5. Maize Yellow (Sul-R:1167)
- 6. Bright White (Sul-R:1001)
- 7. Black Cherry (Sul-R:1183)

North_pole_christmas_10-6x10.dst

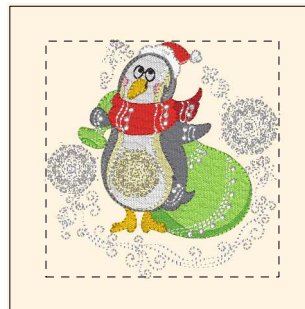
6.01x6.74 inches; 34,162 stitches
7 thread changes; 7 colors



- 1. Rust (Sul-R:1181)
- 2. Lime Green (Sul-R:1510)
- 3. Bright White (Sul-R:1001)
- 4. Apricot (Sul-R:1239)
- 5. Primrose (Sul-R:1066)
- 6. Poppy (Sul-R:1317)
- 7. Bright White (Sul-R:1001)
- 8. Goldenrod (Sul-R:1024)
- 9. Black Cherry (Sul-R:1183)
- 10. Pastel Coral (Sul-R:1016)

North_pole_christmas_11-6x10.dst

6.00x7.36 inches; 36,844 stitches
10 thread changes; 9 colors



- 1. Nile Green (Sul-R:1274)
- 2. Lime Green (Sul-R:1510)
- 3. Bright White (Sul-R:1001)
- 4. Goldenrod (Sul-R:1024)
- 5. Rust (Sul-R:1181)
- 6. Pastel Coral (Sul-R:1016)
- 7. Primrose (Sul-R:1066)
- 8. Gray (Sul-R:1219)
- 9. Black Cherry (Sul-R:1183)
- 10. Poppy (Sul-R:1317)
- 11. Bright White (Sul-R:1001)

North_pole_christmas_12-6x10.dst

6.00x6.08 inches; 37,615 stitches
11 thread changes; 10 colors