

Printed 2/2/2014



- 1. Maple (Sul-R:1021)
- 2. Sunflower Gold (Sul-R:1333)
- 3. Maple (Sul-R:1021)
- 4. Grass Green (Sul-R:1049)
- 5. Toast (Sul-R:1266)
- 6. Cornsilk (Sul-R:502)
- 7. Putty (Sul-R:1508)
- 8. Lt. Plum (Sul-R:1297)
- 9. Duck Wing Blue (Sul-R:1250)

**Old\_fashioned\_autumn\_01-5x7.dst**

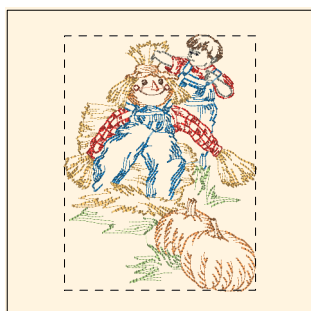
4.91x6.99 inches; 11,395 stitches  
9 thread changes; 8 colors



- 1. Autumn Gold (Sul-R:523)
- 2. Rust (Sul-R:1181)
- 3. Burnt Toast (Sul-R:1265)
- 4. Grass Green (Sul-R:1049)
- 5. Toast (Sul-R:1266)
- 6. Chartreuse (Sul-R:1322)
- 7. Putty (Sul-R:1508)
- 8. Duck Wing Blue (Sul-R:1250)

**Old\_fashioned\_autumn\_02-5x7.dst**

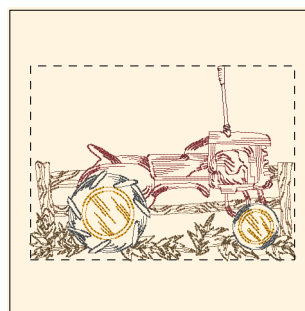
5.00x6.84 inches; 13,619 stitches  
8 thread changes; 8 colors



- 1. Autumn Gold (Sul-R:523)
- 2. Maple (Sul-R:1021)
- 3. Poppy (Sul-R:1317)
- 4. (Sul-R:614)
- 5. Tan (Sul-R:1126)
- 6. Toast (Sul-R:1266)
- 7. Apricot (Sul-R:1239)
- 8. Cornsilk (Sul-R:502)
- 9. Chartreuse (Sul-R:1322)
- 10. Putty (Sul-R:1508)
- 11. (Sul-R:1290)
- 12. Blue Black (Sul-R:1182)

**Old\_fashioned\_autumn\_03-5x7.dst**

4.92x6.56 inches; 13,251 stitches  
12 thread changes; 12 colors



- 1. Sunflower Gold (Sul-R:1333)
- 2. (Sul-R:1036)
- 3. Med. Maple (Sul-R:1216)
- 4. Burnt Toast (Sul-R:1265)
- 5. Toast (Sul-R:1266)
- 6. Med. Dk. Khaki (Sul-R:1040)

**Old\_fashioned\_autumn\_04-5x7.dst**

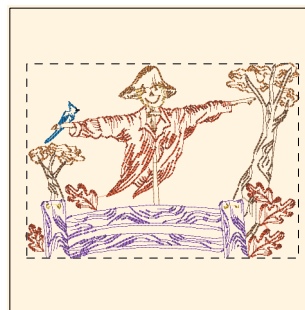
6.80x5.00 inches; 11,375 stitches  
6 thread changes; 6 colors



- 1. Goldenrod (Sul-R:1024)
- 2. Autumn Gold (Sul-R:523)
- 3. Poppy (Sul-R:1317)
- 4. (Sul-R:614)
- 5. Burnt Toast (Sul-R:1265)
- 6. Dewberry (Sul-R:1304)
- 7. Cornsilk (Sul-R:502)
- 8. Peacock Blue (Sul-R:1134)

**Old\_fashioned\_autumn\_05-5x7.dst**

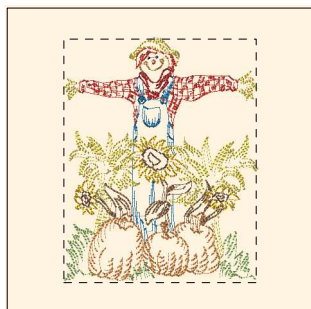
6.94x4.98 inches; 19,563 stitches  
8 thread changes; 8 colors



- 1. Goldenrod (Sul-R:1024)
- 2. Autumn Gold (Sul-R:523)
- 3. Maple (Sul-R:1021)
- 4. Tan (Sul-R:1126)
- 5. Toast (Sul-R:1266)
- 6. Cornsilk (Sul-R:502)
- 7. Med. Purple (Sul-R:1032)
- 8. (Sul-R:1290)
- 9. Blue Black (Sul-R:1182)

**Old\_fashioned\_autumn\_06-5x7.dst**

7.00x5.00 inches; 13,505 stitches  
9 thread changes; 9 colors



- 1. (Sul-R:1290)
- 2. Goldenrod (Sul-R:1024)
- 3. Poppy (Sul-R:1317)
- 4. Rust (Sul-R:1181)
- 5. Nutmeg (Sul-R:521)
- 6. Autumn Gold (Sul-R:523)
- 7. Butterfly Gold (Sul-R:567)
- 8. Toast (Sul-R:1266)
- 9. Apricot (Sul-R:1239)
- 10. Maize Yellow (Sul-R:1167)
- 11. Chartreuse (Sul-R:1322)
- 12. Blue Black (Sul-R:1182)

**Old\_fashioned\_autumn\_07-5x7.dst**

4.95x6.27 inches; 15,141 stitches  
12 thread changes; 12 colors



- 1. Rust (Sul-R:1181)
- 2. Maple (Sul-R:1021)
- 3. Autumn Gold (Sul-R:523)
- 4. Toast (Sul-R:1266)
- 5. Smokey Gray (Sul-R:1240)
- 6. Toast (Sul-R:1266)
- 7. Apricot (Sul-R:1239)
- 8. Maize Yellow (Sul-R:1167)

**Old\_fashioned\_autumn\_08-5x7.dst**

5.04x4.98 inches; 12,341 stitches  
8 thread changes; 7 colors

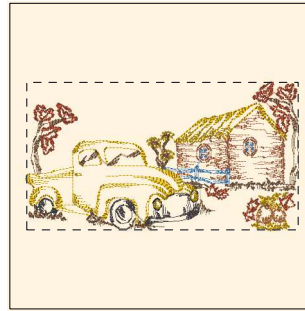
Printed 2/2/2014



- 1. Rust (Sul-R:1181)
- 2. Maple (Sul-R:1021)
- 3. Autumn Gold (Sul-R:523)
- 4. Toast (Sul-R:1266)
- 5. (Sul-R:1269)
- 6. Apricot (Sul-R:1239)
- 7. Med. Army Green (Sul-R:1173)

**Old\_fashioned\_autumn\_09-5x7.dst**

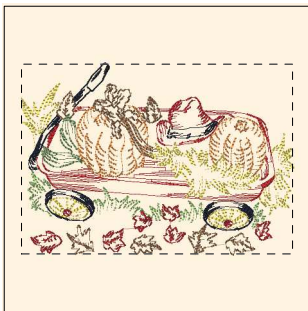
5.00x5.76 inches; 17,851 stitches  
7 thread changes; 7 colors



- 1. Blue Black (Sul-R:1182)
- 2. Goldenrod (Sul-R:1024)
- 3. Maple (Sul-R:1021)
- 4. Nutmeg (Sul-R:521)
- 5. Autumn Gold (Sul-R:523)
- 6. Toast (Sul-R:1266)
- 7. Smokey Gray (Sul-R:1240)
- 8. Toast (Sul-R:1266)
- 9. Apricot (Sul-R:1239)
- 10. Bittersweet (Sul-R:1313)
- 11. Med. Blue (Sul-R:1029)

**Old\_fashioned\_autumn\_10-5x7.dst**

6.99x3.80 inches; 16,315 stitches  
11 thread changes; 10 colors



- 1. Blue Black (Sul-R:1182)
- 2. Rust (Sul-R:1181)
- 3. Autumn Gold (Sul-R:523)
- 4. Toast (Sul-R:1266)
- 5. Moss Green (Sul-R:630)
- 6. Apricot (Sul-R:1239)
- 7. Maize Yellow (Sul-R:1167)
- 8. Chartreuse (Sul-R:1322)

**Old\_fashioned\_autumn\_11-5x7.dst**

6.98x4.89 inches; 17,270 stitches  
8 thread changes; 8 colors



- 1. Goldenrod (Sul-R:1024)
- 2. Rust (Sul-R:1181)
- 3. Nutmeg (Sul-R:521)
- 4. Autumn Gold (Sul-R:523)
- 5. Toast (Sul-R:1266)
- 6. Smokey Gray (Sul-R:1240)
- 7. Apricot (Sul-R:1239)

**Old\_fashioned\_autumn\_12-5x7.dst**

7.00x4.72 inches; 15,663 stitches  
7 thread changes; 7 colors