



- 1. Blue Black (Sul-R:1182)
- 2. Goldenrod (Sul-R:1024)
- 3. Sunflower Gold (Sul-R:1333)
- 4. Poppy (Sul-R:1317)
- 5. Deep Mauve (Sul-R:1237)
- 6. Nile Green (Sul-R:1274)
- 7. Garden Green (Sul-R:569)
- 8. Toast (Sul-R:1266)
- 9. Burnt Toast (Sul-R:1265)
- 10. Gray (Sul-R:1219)
- 11. Peach (Sul-R:1019)
- 12. Putty (Sul-R:1508)
- 13. Duck Wing Blue (Sul-R:1250)

Old_time_kitchen_favorites_01-4x4.dst

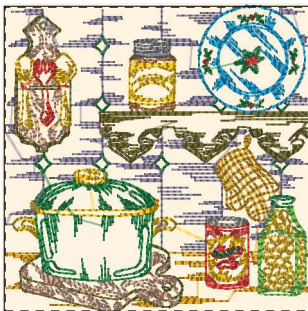
3.90x3.91 inches; 16,336 stitches
13 thread changes; 13 colors



- 1. Goldenrod (Sul-R:1024)
- 2. Sunflower Gold (Sul-R:1333)
- 3. Poppy (Sul-R:1317)
- 4. Nile Green (Sul-R:1274)
- 5. Garden Green (Sul-R:569)
- 6. Peach (Sul-R:1019)
- 7. Putty (Sul-R:1508)
- 8. (Sul-R:1290)
- 9. Duck Wing Blue (Sul-R:1250)

Old_time_kitchen_favorites_02-4x4.dst

3.89x3.91 inches; 10,003 stitches
9 thread changes; 9 colors



- 1. Goldenrod (Sul-R:1024)
- 2. Sunflower Gold (Sul-R:1333)
- 3. Poppy (Sul-R:1317)
- 4. Nile Green (Sul-R:1274)
- 5. Tan (Sul-R:1126)
- 6. Garden Green (Sul-R:569)
- 7. Xmas Green (Sul-R:1051)
- 8. Drab Green (Sul-R:1228)
- 9. Gray (Sul-R:1219)
- 10. Dk. Ecrú (Sul-R:1128)
- 11. Putty (Sul-R:1508)
- 12. Sterling (Sul-R:1295)
- 13. Duck Wing Blue (Sul-R:1250)

Old_time_kitchen_favorites_03-4x4.dst

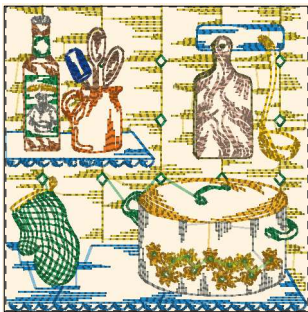
3.91x3.91 inches; 17,182 stitches
13 thread changes; 13 colors



- 1. Blue Black (Sul-R:1182)
- 2. Goldenrod (Sul-R:1024)
- 3. Cinnamon (Sul-R:568)
- 4. Poppy (Sul-R:1317)
- 5. Rust (Sul-R:1181)
- 6. Garden Green (Sul-R:569)
- 7. Toast (Sul-R:1266)
- 8. Bittersweet (Sul-R:1313)
- 9. Gray (Sul-R:1219)
- 10. Team Blue (Sul-R:1535)
- 11. Putty (Sul-R:1508)
- 12. Dusty Navy (Sul-R:1198)
- 13. Duck Wing Blue (Sul-R:1250)

Old_time_kitchen_favorites_04-4x4.dst

3.89x3.90 inches; 18,642 stitches
13 thread changes; 13 colors



- 1. Goldenrod (Sul-R:1024)
- 2. (Sul-R:1244)
- 3. Cinnamon (Sul-R:568)
- 4. Sunflower Gold (Sul-R:1333)
- 5. Nile Green (Sul-R:1274)
- 6. Garden Green (Sul-R:569)
- 7. Tan (Sul-R:1126)
- 8. Drab Green (Sul-R:1228)
- 9. Toast (Sul-R:1266)
- 10. Dk. Ecrú (Sul-R:1128)
- 11. Team Blue (Sul-R:1535)
- 12. Putty (Sul-R:1508)
- 13. (Sul-R:1290)

Old_time_kitchen_favorites_05-4x4.dst

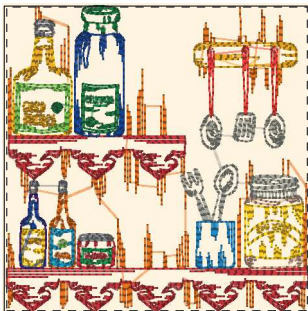
3.90x3.92 inches; 16,661 stitches
13 thread changes; 13 colors



- 1. Goldenrod (Sul-R:1024)
- 2. Sunflower Gold (Sul-R:1333)
- 3. Poppy (Sul-R:1317)
- 4. Nile Green (Sul-R:1274)
- 5. Tan (Sul-R:1126)
- 6. Garden Green (Sul-R:569)
- 7. Xmas Green (Sul-R:1051)
- 8. Toast (Sul-R:1266)
- 9. Dk. Ecrú (Sul-R:1128)
- 10. Putty (Sul-R:1508)
- 11. Dusty Navy (Sul-R:1198)
- 12. Steel Gray (Sul-R:1011)
- 13. Duck Wing Blue (Sul-R:1250)

Old_time_kitchen_favorites_06-4x4.dst

3.91x3.89 inches; 15,090 stitches
13 thread changes; 13 colors



- 1. Goldenrod (Sul-R:1024)
- 2. Cinnamon (Sul-R:568)
- 3. Sunflower Gold (Sul-R:1333)
- 4. Poppy (Sul-R:1317)
- 5. Rust (Sul-R:1181)
- 6. Nile Green (Sul-R:1274)
- 7. Garden Green (Sul-R:569)
- 8. Xmas Green (Sul-R:1051)
- 9. Deep Eggplant (Sul-R:1301)
- 10. Gray (Sul-R:1219)
- 11. Dk. Ecrú (Sul-R:1128)
- 12. Team Blue (Sul-R:1535)
- 13. Putty (Sul-R:1508)
- 14. (Sul-R:1290)
- 15. Dk. Turquoise (Sul-R:1096)

Old_time_kitchen_favorites_07-4x4.dst

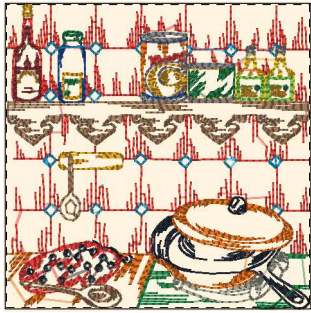
3.87x3.91 inches; 13,934 stitches
15 thread changes; 15 colors



- 1. Blue Black (Sul-R:1182)
- 2. Goldenrod (Sul-R:1024)
- 3. (Sul-R:1244)
- 4. Sunflower Gold (Sul-R:1333)
- 5. Poppy (Sul-R:1317)
- 6. Med. Maple (Sul-R:1216)
- 7. Nile Green (Sul-R:1274)
- 8. Garden Green (Sul-R:569)
- 9. Xmas Green (Sul-R:1051)
- 10. Toast (Sul-R:1266)
- 11. Deep Eggplant (Sul-R:1301)
- 12. Deep Orchid (Sul-R:1255)
- 13. Putty (Sul-R:1508)
- 14. Duck Wing Blue (Sul-R:1250)

Old_time_kitchen_favorites_08-4x4.dst

3.91x3.89 inches; 15,400 stitches
14 thread changes; 14 colors

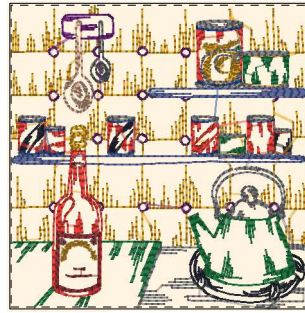


- 1. Blue Black (Sul-R:1182)
- 2. Goldenrod (Sul-R:1024)
- 3. Cinnamon (Sul-R:568)
- 4. Sunflower Gold (Sul-R:1333)
- 5. Poppy (Sul-R:1317)
- 6. Deep Mauve (Sul-R:1237)
- 7. Nile Green (Sul-R:1274)
- 8. Garden Green (Sul-R:569)
- 9. Xmas Green (Sul-R:1051)
- 10. Toast (Sul-R:1266)
- 11. Gray (Sul-R:1219)
- 12. Team Blue (Sul-R:1535)
- 13. Putty (Sul-R:1508)
- 14. Duck Wing Blue (Sul-R:1250)
- 15. Toast (Sul-R:1266)

Old_time_kitchen_favorites_09-4x4.dst

3.91x3.91 inches; 15,043 stitches

15 thread changes; 14 colors

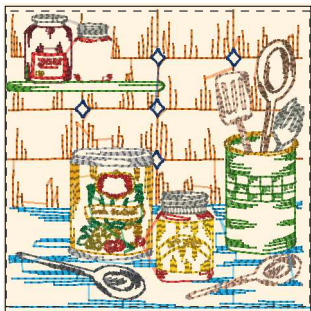


- 1. Blue Black (Sul-R:1182)
- 2. Sunflower Gold (Sul-R:1333)
- 3. Poppy (Sul-R:1317)
- 4. Deep Mauve (Sul-R:1237)
- 5. Xmas Green (Sul-R:1051)
- 6. Med. Dk. Khaki (Sul-R:1040)
- 7. Gray (Sul-R:1219)
- 8. Dk. Ecru (Sul-R:1128)
- 9. Deep Orchid (Sul-R:1255)
- 10. Team Blue (Sul-R:1535)
- 11. Dusty Navy (Sul-R:1198)

Old_time_kitchen_favorites_10-4x4.dst

3.91x3.89 inches; 13,764 stitches

11 thread changes; 11 colors

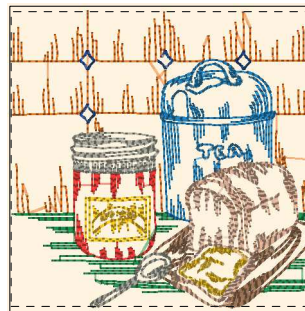


- 1. Goldenrod (Sul-R:1024)
- 2. (Sul-R:1244)
- 3. Cinnamon (Sul-R:568)
- 4. Sunflower Gold (Sul-R:1333)
- 5. Poppy (Sul-R:1317)
- 6. Deep Mauve (Sul-R:1237)
- 7. Grass Green (Sul-R:1049)
- 8. Garden Green (Sul-R:569)
- 9. Toast (Sul-R:1266)
- 10. Med. Dk. Khaki (Sul-R:1040)
- 11. Dk. Ecru (Sul-R:1128)
- 12. Team Blue (Sul-R:1535)
- 13. Putty (Sul-R:1508)
- 14. Steel Gray (Sul-R:1011)
- 15. Duck Wing Blue (Sul-R:1250)

Old_time_kitchen_favorites_11-4x4.dst

3.91x3.81 inches; 12,698 stitches

15 thread changes; 15 colors



- 1. Goldenrod (Sul-R:1024)
- 2. Cinnamon (Sul-R:568)
- 3. Poppy (Sul-R:1317)
- 4. Deep Mauve (Sul-R:1237)
- 5. Garden Green (Sul-R:569)
- 6. Toast (Sul-R:1266)
- 7. Dk. Ecru (Sul-R:1128)
- 8. Team Blue (Sul-R:1535)
- 9. Putty (Sul-R:1508)
- 10. Med. Dk. Ecru (Sul-R:1054)
- 11. (Sul-R:1290)

Old_time_kitchen_favorites_12-4x4.dst

3.91x3.80 inches; 10,956 stitches

11 thread changes; 11 colors