

- 1. Taupe (Sul-R:1213)
- 2. Garden Green (Sul-R:569)
- 3. Xmas Green (Sul-R:1051)
- 4. (Sul-R:1290)
- 5. Salmon Peach (Sul-R:1259)
- 6. Taupe (Sul-R:1213)
- 7. Hot Pink (Sul-R:1109)
- 8. Goldenrod (Sul-R:1024)
- 9. Rust (Sul-R:1181)
- 10. Deep Mauve (Sul-R:1237)
- 11. Gray (Sul-R:1219)
- 12. Blue Black (Sul-R:1182)

Pansies_01-5x7.dst

5.00x6.94 inches; 29,222 stitches
12 thread changes; 11 colors



- 1. Sunflower Gold (Sul-R:1333)
- 2. Xmas Green (Sul-R:1051)
- 3. Garden Green (Sul-R:569)
- 4. Duck Wing Blue (Sul-R:1250)
- 5. Lt. Plum (Sul-R:1297)
- 6. Mimosa Yellow (Sul-R:1187)
- 7. Gray (Sul-R:1219)
- 8. Bright Turquoise (Sul-R:1251)
- 9. Lemon Yellow (Sul-R:1067)
- 10. Blue Black (Sul-R:1182)
- 11. Goldenrod (Sul-R:1024)

Pansies_02-5x7.dst

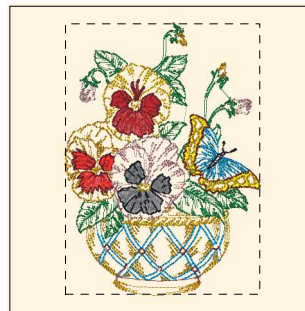
5.00x6.85 inches; 23,598 stitches
11 thread changes; 11 colors



- 1. Garden Green (Sul-R:569)
- 2. Poppy (Sul-R:1317)
- 3. Sunflower Gold (Sul-R:1333)
- 4. Goldenrod (Sul-R:1024)
- 5. (Sul-R:1319)
- 6. Deep Mauve (Sul-R:1237)
- 7. Khaki (Sul-R:1212)
- 8. Red Geranium (Sul-R:1188)
- 9. Sweet Pink (Sul-R:1256)
- 10. Blue Black (Sul-R:1182)
- 11. Med. Jade (Sul-R:1205)
- 12. Deep Nassau Blue (Sul-R:1293)
- 13. Duck Wing Blue (Sul-R:1250)
- 14. Pastel Yellow (Sul-R:1135)
- 15. Cognac (Sul-R:1264)
- 16. Goldenrod (Sul-R:1024)

Pansies_03-5x7.dst

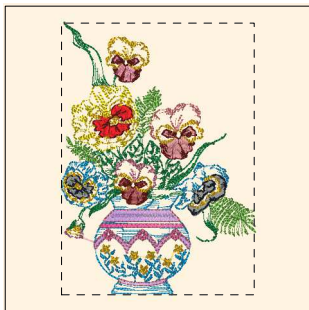
4.97x7.02 inches; 28,337 stitches
16 thread changes; 15 colors



- 1. Garden Green (Sul-R:569)
- 2. Sunflower Gold (Sul-R:1333)
- 3. Taupe (Sul-R:1213)
- 4. Duck Wing Blue (Sul-R:1250)
- 5. Mimosa Yellow (Sul-R:1187)
- 6. Poppy (Sul-R:1317)
- 7. Rust (Sul-R:1181)
- 8. Gray (Sul-R:1219)
- 9. Blue Black (Sul-R:1182)
- 10. Goldenrod (Sul-R:1024)
- 11. Deep Mauve (Sul-R:1237)

Pansies_04-5x7.dst

5.01x6.96 inches; 22,917 stitches
11 thread changes; 11 colors



- 1. Duck Wing Blue (Sul-R:1250)
- 2. Hyacinth (Sul-R:1296)
- 3. Deep Rose (Sul-R:1511)
- 4. Nile Green (Sul-R:1274)
- 5. Garden Green (Sul-R:569)
- 6. Mimosa Yellow (Sul-R:1187)
- 7. Peach (Sul-R:1019)
- 8. Dk. Mauve (Sul-R:1119)
- 9. Bright Turquoise (Sul-R:1251)
- 10. (Sul-R:1319)
- 11. Dewberry (Sul-R:1304)
- 12. Dk. Mauve (Sul-R:1119)
- 13. Med. Maple (Sul-R:1216)
- 14. Cognac (Sul-R:1264)
- 15. (Sul-R:610)
- 16. Blue Black (Sul-R:1182)
- 17. Goldenrod (Sul-R:1024)

Pansies_05-5x7.dst

4.96x7.00 inches; 23,046 stitches
17 thread changes; 16 colors



- 1. Dk. Ecru (Sul-R:1128)
- 2. Garden Green (Sul-R:569)
- 3. Toast (Sul-R:1266)
- 4. Dk. Rose (Sul-R:1191)
- 5. Sunflower Gold (Sul-R:1333)
- 6. Gray (Sul-R:1219)
- 7. Poppy (Sul-R:1317)
- 8. Blue Black (Sul-R:1182)
- 9. Goldenrod (Sul-R:1024)
- 10. Deep Mauve (Sul-R:1237)

Pansies_06-5x7.dst

4.94x7.02 inches; 27,844 stitches
10 thread changes; 10 colors



- 1. Nile Green (Sul-R:1274)
- 2. Garden Green (Sul-R:569)
- 3. Taupe (Sul-R:1213)
- 4. Toast (Sul-R:1266)
- 5. Drab Green (Sul-R:1228)
- 6. Poppy (Sul-R:1317)
- 7. Sunflower Gold (Sul-R:1333)
- 8. Taupe (Sul-R:1213)
- 9. Cognac (Sul-R:1264)
- 10. Taupe (Sul-R:1213)
- 11. Hot Pink (Sul-R:1109)
- 12. (Sul-R:610)
- 13. Blue Black (Sul-R:1182)
- 14. Goldenrod (Sul-R:1024)
- 15. Mauve (Sul-R:1117)
- 16. (Sul-R:1319)

Pansies_07-5x7.dst

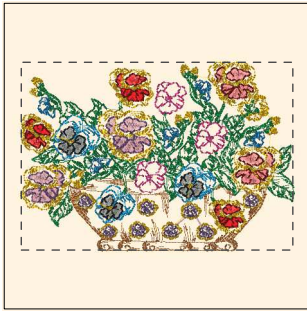
7.00x4.98 inches; 25,661 stitches
16 thread changes; 14 colors



- 1. Grass Green (Sul-R:1049)
- 2. Toast (Sul-R:1266)
- 3. Drab Green (Sul-R:1228)
- 4. Fuchsia (Sul-R:1192)
- 5. Xmas Green (Sul-R:1051)
- 6. Brick (Sul-R:1081)
- 7. Mimosa Yellow (Sul-R:1187)
- 8. Coral (Sul-R:1154)
- 9. Deep Mauve (Sul-R:1237)
- 10. (Sul-R:610)
- 11. Blue Black (Sul-R:1182)
- 12. Goldenrod (Sul-R:1024)
- 13. Duck Wing Blue (Sul-R:1250)
- 14. Dk. Ecru (Sul-R:1128)
- 15. Mauve (Sul-R:1117)
- 16. Bright Turquoise (Sul-R:1251)

Pansies_08-5x7.dst

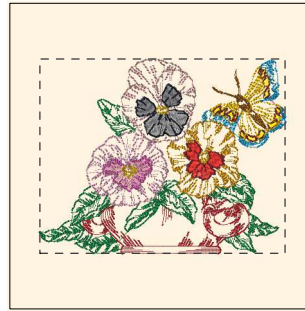
7.00x4.94 inches; 28,596 stitches
16 thread changes; 16 colors



- 1. (Sul-R:1319)
- 2. (Sul-R:610)
- 3. Peach (Sul-R:1019)
- 4. Taupe (Sul-R:1213)
- 5. Blue Black (Sul-R:1182)
- 6. Cognac (Sul-R:1264)
- 7. Goldenrod (Sul-R:1024)
- 8. Mimosa Yellow (Sul-R:1187)
- 9. Tan (Sul-R:1126)
- 10. Garden Green (Sul-R:569)
- 11. Deep Rose (Sul-R:1511)
- 12. Lt. Plum (Sul-R:1297)
- 13. (Sul-R:1290)
- 14. Bright Turquoise (Sul-R:1251)

Pansies_09-5x7.dst

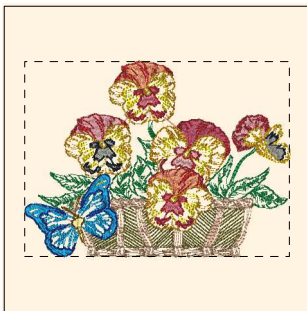
7.00x4.84 inches; 32,509 stitches
14 thread changes; 14 colors



- 1. Garden Green (Sul-R:569)
- 2. Rust (Sul-R:1181)
- 3. Bright Turquoise (Sul-R:1251)
- 4. Mimosa Yellow (Sul-R:1187)
- 5. Med. Tawny Tan (Sul-R:1056)
- 6. Mauve (Sul-R:1117)
- 7. Taupe (Sul-R:1213)
- 8. Hot Pink (Sul-R:1109)
- 9. Sunflower Gold (Sul-R:1333)
- 10. Poppy (Sul-R:1317)
- 11. Deep Mauve (Sul-R:1237)
- 12. Taupe (Sul-R:1213)
- 13. Gray (Sul-R:1219)
- 14. Blue Black (Sul-R:1182)
- 15. Goldenrod (Sul-R:1024)

Pansies_10-5x7.dst

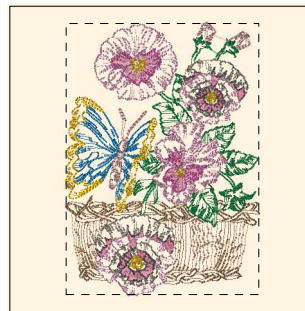
6.31x5.00 inches; 20,168 stitches
15 thread changes; 14 colors



- 1. Garden Green (Sul-R:569)
- 2. Drab Green (Sul-R:1228)
- 3. Toast (Sul-R:1266)
- 4. Dk. Ecru (Sul-R:1128)
- 5. Burgundy (Sul-R:1034)
- 6. Brick (Sul-R:1081)
- 7. Bittersweet (Sul-R:1313)
- 8. Taupe (Sul-R:1213)
- 9. Mimosa Yellow (Sul-R:1187)
- 10. Rust (Sul-R:1181)
- 11. Sunflower Gold (Sul-R:1333)
- 12. (Sul-R:610)
- 13. Blue Black (Sul-R:1182)
- 14. Goldenrod (Sul-R:1024)
- 15. Duck Wing Blue (Sul-R:1250)
- 16. Bright Turquoise (Sul-R:1251)
- 17. Deep Nassau Blue (Sul-R:1293)
- 18. Lemon Yellow (Sul-R:1067)
- 19. Med. Tawny Tan (Sul-R:1056)

Pansies_11-5x7.dst

6.82x5.02 inches; 30,629 stitches
19 thread changes; 19 colors



- 1. Toast (Sul-R:1266)
- 2. Dk. Ecru (Sul-R:1128)
- 3. Garden Green (Sul-R:569)
- 4. Med. Taupe (Sul-R:1180)
- 5. Dk. Mauve (Sul-R:1119)
- 6. Med. Dk. Khaki (Sul-R:1040)
- 7. Taupe (Sul-R:1213)
- 8. Hot Pink (Sul-R:1109)
- 9. Mauve (Sul-R:1117)
- 10. Lt. Pink (Sul-R:1115)
- 11. (Sul-R:1290)
- 12. Goldenrod (Sul-R:1024)
- 13. Taupe (Sul-R:1213)

Pansies_12-5x7.dst

4.96x6.98 inches; 28,025 stitches
13 thread changes; 12 colors