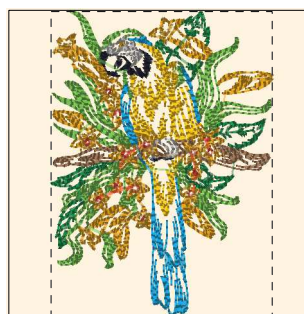


- 1. Blue Black (Sul-R:1182)
- 2. Goldenrod (Sul-R:1024)
- 3. Nile Green (Sul-R:1274)
- 4. Tan (Sul-R:1126)
- 5. Garden Green (Sul-R:569)
- 6. Toast (Sul-R:1266)
- 7. Steel Gray (Sul-R:1011)
- 8. (Sul-R:1290)
- 9. Duck Wing Blue (Sul-R:1250)

**Parrot\_01-4x4.dst**

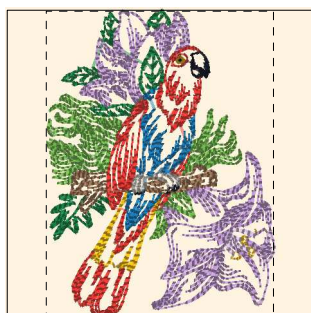
2.69x3.91 inches; 12,305 stitches  
9 thread changes; 9 colors



- 1. Blue Black (Sul-R:1182)
- 2. Goldenrod (Sul-R:1024)
- 3. Sunflower Gold (Sul-R:1333)
- 4. Poppy (Sul-R:1317)
- 5. Nile Green (Sul-R:1274)
- 6. Garden Green (Sul-R:569)
- 7. Toast (Sul-R:1266)
- 8. Steel Gray (Sul-R:1011)
- 9. Duck Wing Blue (Sul-R:1250)

**Parrot\_02-4x4.dst**

2.85x3.91 inches; 13,059 stitches  
9 thread changes; 9 colors



- 1. Blue Black (Sul-R:1182)
- 2. Goldenrod (Sul-R:1024)
- 3. Poppy (Sul-R:1317)
- 4. Nile Green (Sul-R:1274)
- 5. Garden Green (Sul-R:569)
- 6. Toast (Sul-R:1266)
- 7. (Sul-R:1290)
- 8. Steel Gray (Sul-R:1011)
- 9. Hyacinth (Sul-R:1296)
- 10. Med. Orchid (Sul-R:1031)

**Parrot\_03-4x4.dst**

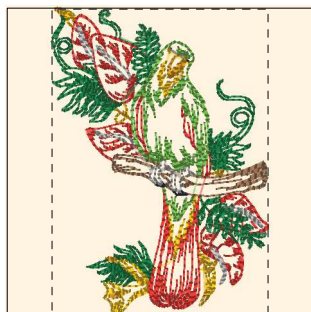
2.93x3.91 inches; 12,940 stitches  
10 thread changes; 10 colors



- 1. Blue Black (Sul-R:1182)
- 2. Goldenrod (Sul-R:1024)
- 3. Poppy (Sul-R:1317)
- 4. Nile Green (Sul-R:1274)
- 5. Garden Green (Sul-R:569)
- 6. Toast (Sul-R:1266)
- 7. Steel Gray (Sul-R:1011)
- 8. (Sul-R:1290)
- 9. Duck Wing Blue (Sul-R:1250)

**Parrot\_04-4x4.dst**

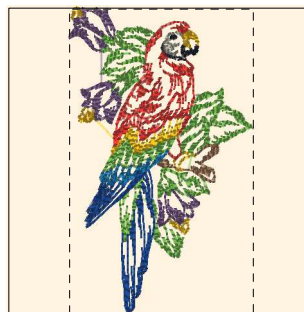
3.41x3.91 inches; 14,841 stitches  
9 thread changes; 9 colors



- 1. Blue Black (Sul-R:1182)
- 2. Goldenrod (Sul-R:1024)
- 3. Sunflower Gold (Sul-R:1333)
- 4. Poppy (Sul-R:1317)
- 5. Nile Green (Sul-R:1274)
- 6. Garden Green (Sul-R:569)
- 7. Toast (Sul-R:1266)
- 8. Steel Gray (Sul-R:1011)

**Parrot\_05-4x4.dst**

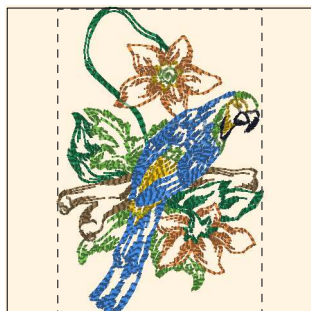
2.79x3.91 inches; 10,547 stitches  
8 thread changes; 8 colors



- 1. Blue Black (Sul-R:1182)
- 2. Goldenrod (Sul-R:1024)
- 3. Poppy (Sul-R:1317)
- 4. Nile Green (Sul-R:1274)
- 5. Toast (Sul-R:1266)
- 6. Team Blue (Sul-R:1535)
- 7. Lt. Plum (Sul-R:1297)
- 8. Putty (Sul-R:1508)
- 9. (Sul-R:1290)

**Parrot\_06-4x4.dst**

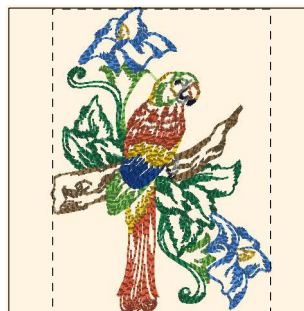
2.37x3.91 inches; 7,664 stitches  
9 thread changes; 9 colors



- 1. Blue Black (Sul-R:1182)
- 2. Spark Gold (Sul-R:1083)
- 3. Autumn Gold (Sul-R:523)
- 4. Emerald Green (Sul-R:1079)
- 5. Nile Green (Sul-R:1274)
- 6. Burnt Toast (Sul-R:1265)
- 7. Royal Blue (Sul-R:1076)

**Parrot\_07-4x4.dst**

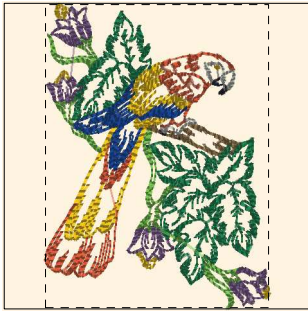
2.63x3.91 inches; 10,309 stitches  
7 thread changes; 7 colors



- 1. Blue Black (Sul-R:1182)
- 2. Spark Gold (Sul-R:1083)
- 3. Maple (Sul-R:1021)
- 4. Autumn Gold (Sul-R:523)
- 5. Emerald Green (Sul-R:1079)
- 6. Nile Green (Sul-R:1274)
- 7. Burnt Toast (Sul-R:1265)
- 8. Team Blue (Sul-R:1535)
- 9. Dk. Gray Khaki (Sul-R:1270)
- 10. Steel Gray (Sul-R:1011)
- 11. Royal Blue (Sul-R:1076)

**Parrot\_08-4x4.dst**

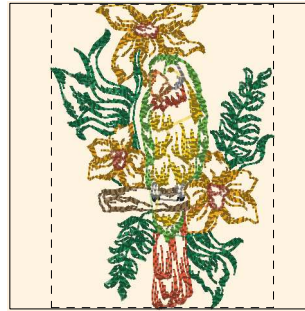
2.81x3.91 inches; 9,845 stitches  
11 thread changes; 11 colors



- 1. Blue Black (Sul-R:1182)
- 2. Spark Gold (Sul-R:1083)
- 3. Maple (Sul-R:1021)
- 4. Emerald Green (Sul-R:1079)
- 5. Nile Green (Sul-R:1274)
- 6. Burnt Toast (Sul-R:1265)
- 7. Lt. Plum (Sul-R:1297)
- 8. Team Blue (Sul-R:1535)
- 9. Dk. Gray Khaki (Sul-R:1270)

**Parrot\_09-4x4.dst**

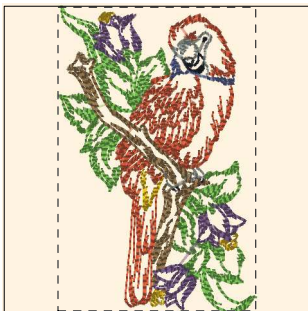
2.87x3.91 inches; 10,996 stitches  
9 thread changes; 9 colors



- 1. Blue Black (Sul-R:1182)
- 2. Spark Gold (Sul-R:1083)
- 3. Sunflower Gold (Sul-R:1333)
- 4. Maple (Sul-R:1021)
- 5. Autumn Gold (Sul-R:523)
- 6. Emerald Green (Sul-R:1079)
- 7. Nile Green (Sul-R:1274)
- 8. Burnt Toast (Sul-R:1265)
- 9. Steel Gray (Sul-R:1011)

**Parrot\_10-4x4.dst**

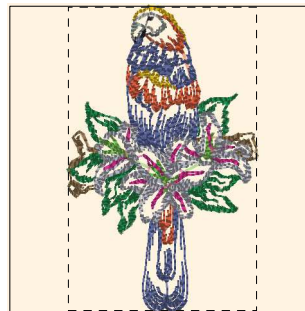
2.86x3.91 inches; 11,234 stitches  
9 thread changes; 9 colors



- 1. Blue Black (Sul-R:1182)
- 2. Spark Gold (Sul-R:1083)
- 3. Maple (Sul-R:1021)
- 4. Nile Green (Sul-R:1274)
- 5. Burnt Toast (Sul-R:1265)
- 6. Lt. Plum (Sul-R:1297)
- 7. Dk. Gray Khaki (Sul-R:1270)
- 8. Dusty Navy (Sul-R:1198)

**Parrot\_11-4x4.dst**

2.55x3.91 inches; 9,937 stitches  
8 thread changes; 8 colors



- 1. Blue Black (Sul-R:1182)
- 2. Spark Gold (Sul-R:1083)
- 3. Maple (Sul-R:1021)
- 4. Nile Green (Sul-R:1274)
- 5. Garden Green (Sul-R:569)
- 6. Burnt Toast (Sul-R:1265)
- 7. Med. Rose (Sul-R:1231)
- 8. Dk. Gray Khaki (Sul-R:1270)
- 9. Dusty Navy (Sul-R:1198)
- 10. Dk. Nickel Gray (Sul-R:1329)

**Parrot\_12-4x4.dst**

2.43x3.91 inches; 9,420 stitches  
10 thread changes; 10 colors