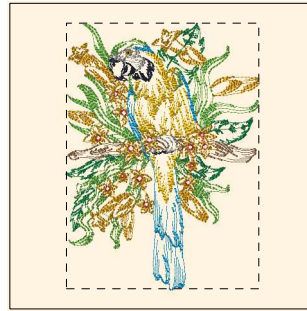




- 1. Blue Black (Sul-R:1182)
- 2. Goldenrod (Sul-R:1024)
- 3. Nile Green (Sul-R:1274)
- 4. Tan (Sul-R:1126)
- 5. Garden Green (Sul-R:569)
- 6. Toast (Sul-R:1266)
- 7. Steel Gray (Sul-R:1011)
- 8. (Sul-R:1290)
- 9. Duck Wing Blue (Sul-R:1250)

Parrot_01-5x7.dst

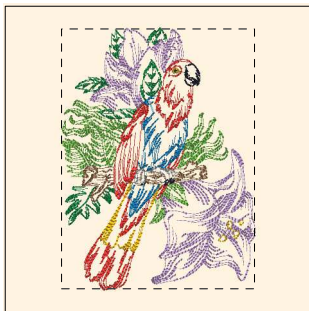
4.72x6.89 inches; 20,238 stitches
9 thread changes; 9 colors



- 1. Blue Black (Sul-R:1182)
- 2. Goldenrod (Sul-R:1024)
- 3. Sunflower Gold (Sul-R:1333)
- 4. Poppy (Sul-R:1317)
- 5. Nile Green (Sul-R:1274)
- 6. Garden Green (Sul-R:569)
- 7. Toast (Sul-R:1266)
- 8. Steel Gray (Sul-R:1011)
- 9. Duck Wing Blue (Sul-R:1250)

Parrot_02-5x7.dst

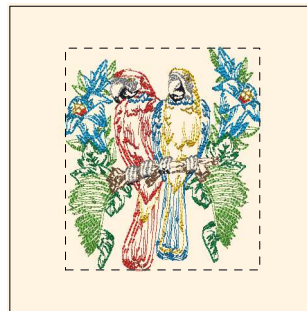
4.96x6.84 inches; 21,562 stitches
9 thread changes; 9 colors



- 1. Blue Black (Sul-R:1182)
- 2. Goldenrod (Sul-R:1024)
- 3. Poppy (Sul-R:1317)
- 4. Nile Green (Sul-R:1274)
- 5. Garden Green (Sul-R:569)
- 6. Toast (Sul-R:1266)
- 7. (Sul-R:1290)
- 8. Steel Gray (Sul-R:1011)
- 9. Hyacinth (Sul-R:1296)
- 10. Med. Orchid (Sul-R:1031)

Parrot_03-5x7.dst

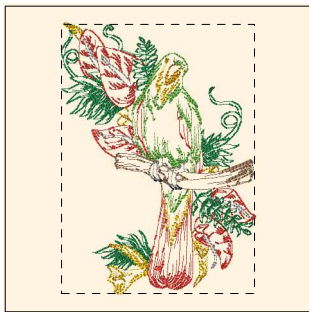
4.97x6.69 inches; 18,822 stitches
10 thread changes; 10 colors



- 1. Blue Black (Sul-R:1182)
- 2. Goldenrod (Sul-R:1024)
- 3. Poppy (Sul-R:1317)
- 4. Nile Green (Sul-R:1274)
- 5. Garden Green (Sul-R:569)
- 6. Toast (Sul-R:1266)
- 7. Steel Gray (Sul-R:1011)
- 8. (Sul-R:1290)
- 9. Duck Wing Blue (Sul-R:1250)

Parrot_04-5x7.dst

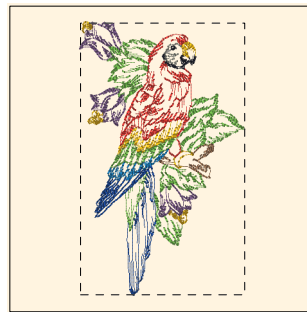
5.00x5.72 inches; 20,469 stitches
9 thread changes; 9 colors



- 1. Blue Black (Sul-R:1182)
- 2. Goldenrod (Sul-R:1024)
- 3. Sunflower Gold (Sul-R:1333)
- 4. Poppy (Sul-R:1317)
- 5. Nile Green (Sul-R:1274)
- 6. Garden Green (Sul-R:569)
- 7. Toast (Sul-R:1266)
- 8. Steel Gray (Sul-R:1011)

Parrot_05-5x7.dst

4.98x6.93 inches; 16,623 stitches
8 thread changes; 8 colors



- 1. Blue Black (Sul-R:1182)
- 2. Goldenrod (Sul-R:1024)
- 3. Poppy (Sul-R:1317)
- 4. Nile Green (Sul-R:1274)
- 5. Toast (Sul-R:1266)
- 6. Team Blue (Sul-R:1535)
- 7. Lt. Plum (Sul-R:1297)
- 8. Putty (Sul-R:1508)
- 9. (Sul-R:1290)

Parrot_06-5x7.dst

4.23x7.00 inches; 12,508 stitches
9 thread changes; 9 colors



- 1. Blue Black (Sul-R:1182)
- 2. Spark Gold (Sul-R:1083)
- 3. Autumn Gold (Sul-R:523)
- 4. Emerald Green (Sul-R:1079)
- 5. Nile Green (Sul-R:1274)
- 6. Burnt Toast (Sul-R:1265)
- 7. Royal Blue (Sul-R:1076)

Parrot_07-5x7.dst

4.74x6.98 inches; 16,418 stitches
7 thread changes; 7 colors



- 1. Blue Black (Sul-R:1182)
- 2. Spark Gold (Sul-R:1083)
- 3. Maple (Sul-R:1021)
- 4. Autumn Gold (Sul-R:523)
- 5. Emerald Green (Sul-R:1079)
- 6. Nile Green (Sul-R:1274)
- 7. Burnt Toast (Sul-R:1265)
- 8. Team Blue (Sul-R:1535)
- 9. Dk. Gray Khaki (Sul-R:1270)
- 10. Steel Gray (Sul-R:1011)
- 11. Royal Blue (Sul-R:1076)

Parrot_08-5x7.dst

4.99x7.00 inches; 15,586 stitches
11 thread changes; 11 colors



- 1. Blue Black (Sul-R:1182)
- 2. Spark Gold (Sul-R:1083)
- 3. Maple (Sul-R:1021)
- 4. Emerald Green (Sul-R:1079)
- 5. Nile Green (Sul-R:1274)
- 6. Burnt Toast (Sul-R:1265)
- 7. Lt. Plum (Sul-R:1297)
- 8. Team Blue (Sul-R:1535)
- 9. Dk. Gray Khaki (Sul-R:1270)

Parrot_09-5x7.dst

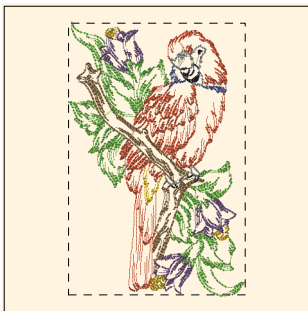
5.00x6.82 inches; 17,050 stitches
9 thread changes; 9 colors



- 1. Blue Black (Sul-R:1182)
- 2. Spark Gold (Sul-R:1083)
- 3. Sunflower Gold (Sul-R:1333)
- 4. Maple (Sul-R:1021)
- 5. Autumn Gold (Sul-R:523)
- 6. Emerald Green (Sul-R:1079)
- 7. Nile Green (Sul-R:1274)
- 8. Burnt Toast (Sul-R:1265)
- 9. Steel Gray (Sul-R:1011)

Parrot_10-5x7.dst

4.99x6.84 inches; 17,367 stitches
9 thread changes; 9 colors



- 1. Blue Black (Sul-R:1182)
- 2. Spark Gold (Sul-R:1083)
- 3. Maple (Sul-R:1021)
- 4. Nile Green (Sul-R:1274)
- 5. Burnt Toast (Sul-R:1265)
- 6. Lt. Plum (Sul-R:1297)
- 7. Dk. Gray Khaki (Sul-R:1270)
- 8. Dusty Navy (Sul-R:1198)

Parrot_11-5x7.dst

4.55x7.00 inches; 15,892 stitches
8 thread changes; 8 colors