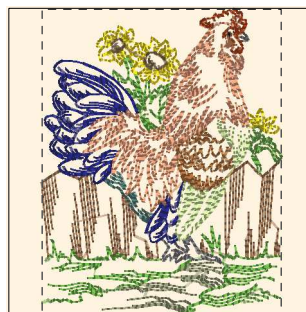


- 1. Golden Yellow (Sul-R:1185)
- 2. Burnt Toast (Sul-R:1265)
- 3. Drab Green (Sul-R:1228)
- 4. Apricot (Sul-R:1239)
- 5. Gray (Sul-R:1219)
- 6. Deep Nassau Blue (Sul-R:1293)
- 7. Drab Green (Sul-R:1228)
- 8. (Sul-R:1282)
- 9. Dk. Sage Green (Sul-R:1285)
- 10. Lt. Avocado (Sul-R:1209)
- 11. Gray (Sul-R:1219)
- 12. Sunset (Sul-R:621)
- 13. Blue Black (Sul-R:1182)

**Rooster01-4x4.dst**

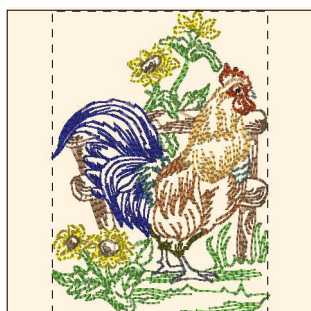
2.89x3.91 inches; 10,291 stitches  
13 thread changes; 11 colors



- 1. Lt. Khaki (Sul-R:1211)
- 2. Toast (Sul-R:1266)
- 3. Nile Green (Sul-R:1274)
- 4. Mimosa Yellow (Sul-R:1187)
- 5. Burnt Toast (Sul-R:1265)
- 6. Tan (Sul-R:1126)
- 7. Dk. Sage Green (Sul-R:1285)
- 8. Gray (Sul-R:1219)
- 9. Deep Nassau Blue (Sul-R:1293)
- 10. Spice (Sul-R:562)
- 11. Pastel Yellow-Green (Sul-R:1104)
- 12. Gray (Sul-R:1219)
- 13. Sunset (Sul-R:621)
- 14. Blue Black (Sul-R:1182)

**Rooster02-4x4.dst**

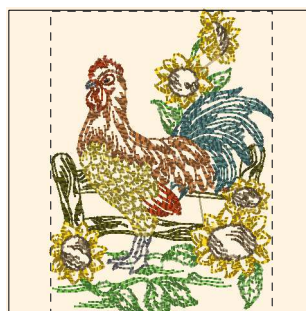
3.08x3.91 inches; 16,575 stitches  
14 thread changes; 13 colors



- 1. Nile Green (Sul-R:1274)
- 2. Mimosa Yellow (Sul-R:1187)
- 3. Burnt Toast (Sul-R:1265)
- 4. Dk. Sage Green (Sul-R:1285)
- 5. Toast (Sul-R:1266)
- 6. Med. Dk. Khaki (Sul-R:1040)
- 7. Med. Army Green (Sul-R:1173)
- 8. Tan (Sul-R:1126)
- 9. Cornsilk (Sul-R:502)
- 10. Deep Nassau Blue (Sul-R:1293)
- 11. Gray Khaki (Sul-R:1321)
- 12. Sunset (Sul-R:621)
- 13. Blue Black (Sul-R:1182)

**Rooster03-4x4.dst**

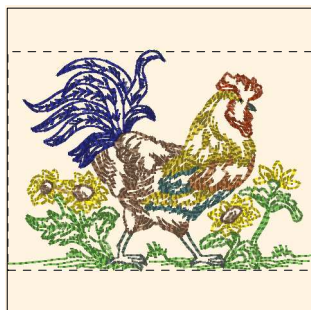
2.78x3.91 inches; 10,122 stitches  
13 thread changes; 13 colors



- 1. Med. Army Green (Sul-R:1173)
- 2. Nile Green (Sul-R:1274)
- 3. Golden Yellow (Sul-R:1185)
- 4. Burnt Toast (Sul-R:1265)
- 5. Gray (Sul-R:1219)
- 6. Sunset (Sul-R:621)
- 7. (Sul-R:1243)
- 8. Tan (Sul-R:1126)
- 9. Dk. Sage Green (Sul-R:1285)
- 10. Gray (Sul-R:1219)
- 11. Sunset (Sul-R:621)
- 12. Blue Black (Sul-R:1182)

**Rooster04-4x4.dst**

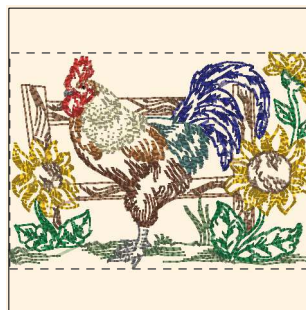
2.85x3.91 inches; 16,719 stitches  
12 thread changes; 10 colors



- 1. Mimosa Yellow (Sul-R:1187)
- 2. Toast (Sul-R:1266)
- 3. Nile Green (Sul-R:1274)
- 4. Khaki (Sul-R:1212)
- 5. Toast (Sul-R:1266)
- 6. Tan (Sul-R:1126)
- 7. Deep Nassau Blue (Sul-R:1293)
- 8. (Sul-R:1244)
- 9. Dk. Sage Green (Sul-R:1285)
- 10. Sunset (Sul-R:621)
- 11. Blue Black (Sul-R:1182)

**Rooster05-4x4.dst**

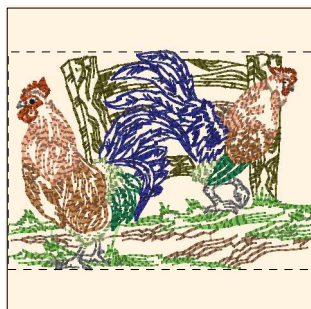
3.92x2.82 inches; 10,765 stitches  
11 thread changes; 10 colors



- 1. Moss Green (Sul-R:630)
- 2. Goldenrod (Sul-R:1024)
- 3. Toast (Sul-R:1266)
- 4. (Sul-R:614)
- 5. Tan (Sul-R:1126)
- 6. Garden Green (Sul-R:569)
- 7. Deep Nassau Blue (Sul-R:1293)
- 8. Dk. Sage Green (Sul-R:1285)
- 9. Pale Yellow (Sul-R:1061)
- 10. Gray (Sul-R:1219)
- 11. Poppy (Sul-R:1317)
- 12. Blue Black (Sul-R:1182)

**Rooster06-4x4.dst**

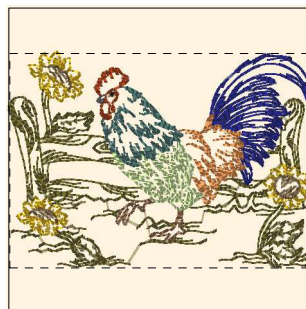
3.91x2.79 inches; 12,308 stitches  
12 thread changes; 12 colors



- 1. Toast (Sul-R:1266)
- 2. Nile Green (Sul-R:1274)
- 3. Med. Army Green (Sul-R:1173)
- 4. Gray (Sul-R:1219)
- 5. Pastel Yellow-Green (Sul-R:1104)
- 6. Tan (Sul-R:1126)
- 7. Emerald Green (Sul-R:1079)
- 8. Spice (Sul-R:562)
- 9. Deep Nassau Blue (Sul-R:1293)
- 10. Sunset (Sul-R:621)
- 11. Blue Black (Sul-R:1182)

**Rooster07-4x4.dst**

3.91x2.81 inches; 12,884 stitches  
11 thread changes; 11 colors

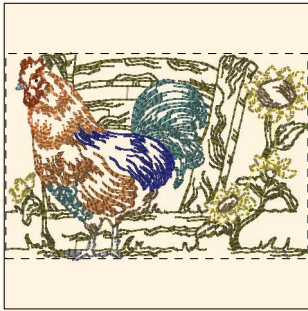


- 1. Drab Green (Sul-R:1228)
- 2. Toast (Sul-R:1266)
- 3. Golden Yellow (Sul-R:1185)
- 4. Burnt Toast (Sul-R:1265)
- 5. Drab Green (Sul-R:1228)
- 6. Tan (Sul-R:1126)
- 7. Deep Nassau Blue (Sul-R:1293)
- 8. Dk. Sage Green (Sul-R:1285)
- 9. Apricot (Sul-R:1239)
- 10. Pastel Yellow-Green (Sul-R:1104)
- 11. Sunset (Sul-R:621)
- 12. Gray (Sul-R:1219)
- 13. Blue Black (Sul-R:1182)

**Rooster08-4x4.dst**

3.91x2.77 inches; 15,505 stitches  
13 thread changes; 12 colors

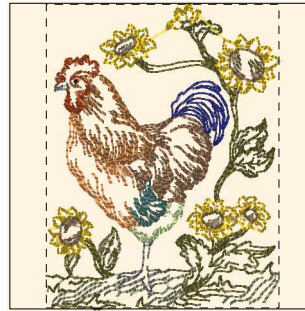
Printed 2/2/2014



- 1. Drab Green (Sul-R:1228)
- 2. Maize Yellow (Sul-R:1167)
- 3. Burnt Toast (Sul-R:1265)
- 4. Drab Green (Sul-R:1228)
- 5. Tan (Sul-R:1126)
- 6. Burnt Toast (Sul-R:1265)
- 7. Dk. Sage Green (Sul-R:1285)
- 8. Deep Nassau Blue (Sul-R:1293)
- 9. Apricot (Sul-R:1239)
- 10. Gray (Sul-R:1219)
- 11. Dk. Gray Khaki (Sul-R:1270)
- 12. Sunset (Sul-R:621)
- 13. Blue Black (Sul-R:1182)

**Rooster09-4x4.dst**

3.90x2.65 inches; 11,358 stitches  
13 thread changes; 11 colors



- 1. Lt. Khaki (Sul-R:1211)
- 2. Drab Green (Sul-R:1228)
- 3. Golden Yellow (Sul-R:1185)
- 4. Burnt Toast (Sul-R:1265)
- 5. Toast (Sul-R:1266)
- 6. Gray (Sul-R:1219)
- 7. Deep Nassau Blue (Sul-R:1293)
- 8. Pastel Yellow-Green (Sul-R:1104)
- 9. Apricot (Sul-R:1239)
- 10. Tan (Sul-R:1126)
- 11. Dk. Sage Green (Sul-R:1285)
- 12. Sunset (Sul-R:621)
- 13. Blue Black (Sul-R:1182)

**Rooster10-4x4.dst**

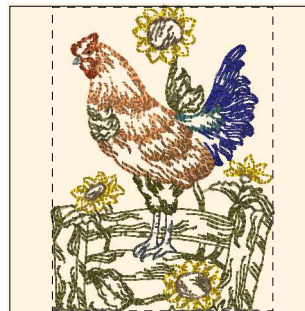
3.00x3.91 inches; 11,327 stitches  
13 thread changes; 13 colors



- 1. Burnt Toast (Sul-R:1265)
- 2. Drab Green (Sul-R:1228)
- 3. Golden Yellow (Sul-R:1185)
- 4. Gray (Sul-R:1219)
- 5. Pastel Yellow-Green (Sul-R:1104)
- 6. Burnt Toast (Sul-R:1265)
- 7. Deep Nassau Blue (Sul-R:1293)
- 8. Sunset (Sul-R:621)
- 9. Gray (Sul-R:1219)
- 10. Blue Black (Sul-R:1182)

**Rooster11-4x4.dst**

3.25x3.91 inches; 11,189 stitches  
10 thread changes; 8 colors



- 1. Drab Green (Sul-R:1228)
- 2. Golden Yellow (Sul-R:1185)
- 3. Burnt Toast (Sul-R:1265)
- 4. Drab Green (Sul-R:1228)
- 5. Med. Dk. Khaki (Sul-R:1040)
- 6. Tan (Sul-R:1126)
- 7. Med. Army Green (Sul-R:1173)
- 8. Drab Green (Sul-R:1228)
- 9. Dk. Sage Green (Sul-R:1285)
- 10. Deep Nassau Blue (Sul-R:1293)
- 11. Apricot (Sul-R:1239)
- 12. Dk. Gray Khaki (Sul-R:1270)
- 13. Sunset (Sul-R:621)
- 14. Blue Black (Sul-R:1182)

**Rooster12-4x4.dst**

2.84x3.91 inches; 11,229 stitches  
14 thread changes; 12 colors