



- 1. (Sul-R:1244)
- 2. Dark Brown (Sul-R:1130)
- 3. Garden Green (Sul-R:569)
- 4. Xmas Green (Sul-R:1051)
- 5. (Sul-R:1290)
- 6. Goldenrod (Sul-R:1024)
- 7. Toast (Sul-R:1266)
- 8. Lt. Khaki (Sul-R:1211)
- 9. Med. Dk. Khaki (Sul-R:1040)
- 10. Duck Wing Blue (Sul-R:1250)
- 11. Blue Black (Sul-R:1182)

Safari_mama_baby_01-4x4.dst
3.88x3.91 inches; 13,843 stitches
11 thread changes; 11 colors



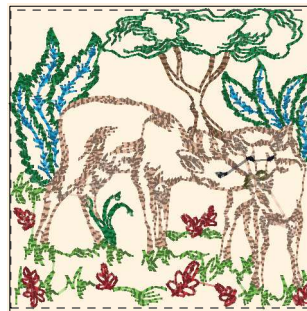
- 1. Garden Green (Sul-R:569)
- 2. Xmas Green (Sul-R:1051)
- 3. Dk. Ecru (Sul-R:1128)
- 4. Duck Wing Blue (Sul-R:1250)
- 5. Goldenrod (Sul-R:1024)
- 6. Toast (Sul-R:1266)
- 7. Lt. Khaki (Sul-R:1211)
- 8. Dewberry (Sul-R:1304)
- 9. Blue Black (Sul-R:1182)

Safari_mama_baby_02-4x4.dst
3.90x3.91 inches; 9,925 stitches
9 thread changes; 9 colors



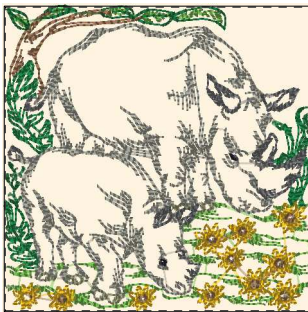
- 1. Nile Green (Sul-R:1274)
- 2. Xmas Green (Sul-R:1051)
- 3. Garden Green (Sul-R:569)
- 4. Goldenrod (Sul-R:1024)
- 5. Toast (Sul-R:1266)
- 6. Cinnamon (Sul-R:568)
- 7. Putty (Sul-R:1508)
- 8. Deep Mauve (Sul-R:1237)
- 9. Blue Black (Sul-R:1182)

Safari_mama_baby_03-4x4.dst
3.91x3.90 inches; 18,105 stitches
9 thread changes; 9 colors



- 1. Toast (Sul-R:1266)
- 2. Duck Wing Blue (Sul-R:1250)
- 3. Garden Green (Sul-R:569)
- 4. Dk. Ecru (Sul-R:1128)
- 5. Med. Dk. Ecru (Sul-R:1054)
- 6. Nile Green (Sul-R:1274)
- 7. Rust (Sul-R:1181)
- 8. Drab Green (Sul-R:1228)
- 9. Blue Black (Sul-R:1182)

Safari_mama_baby_04-4x4.dst
3.91x3.84 inches; 14,727 stitches
9 thread changes; 9 colors



- 1. Nile Green (Sul-R:1274)
- 2. Goldenrod (Sul-R:1024)
- 3. Toast (Sul-R:1266)
- 4. Garden Green (Sul-R:569)
- 5. Xmas Green (Sul-R:1051)
- 6. Lt. Khaki (Sul-R:1211)
- 7. Putty (Sul-R:1508)
- 8. Med. Steel Gray (Sul-R:1166)
- 9. Blue Black (Sul-R:1182)

Safari_mama_baby_05-4x4.dst
3.91x3.91 inches; 15,086 stitches
9 thread changes; 9 colors



- 1. Med. Dk. Ecru (Sul-R:1054)
- 2. Nile Green (Sul-R:1274)
- 3. Rust (Sul-R:1181)
- 4. Xmas Green (Sul-R:1051)
- 5. Duck Wing Blue (Sul-R:1250)
- 6. Garden Green (Sul-R:569)
- 7. Goldenrod (Sul-R:1024)
- 8. Sunflower Gold (Sul-R:1333)
- 9. Burnt Toast (Sul-R:1265)
- 10. Chartreuse (Sul-R:1322)
- 11. Poppy (Sul-R:1317)
- 12. Blue Black (Sul-R:1182)

Safari_mama_baby_06-4x4.dst
3.89x3.90 inches; 14,550 stitches
12 thread changes; 12 colors



- 1. Goldenrod (Sul-R:1024)
- 2. Toast (Sul-R:1266)
- 3. Duck Wing Blue (Sul-R:1250)
- 4. Garden Green (Sul-R:569)
- 5. Poppy (Sul-R:1317)
- 6. Rust (Sul-R:1181)
- 7. Autumn Gold (Sul-R:523)
- 8. Xmas Green (Sul-R:1051)
- 9. Dk. Ecru (Sul-R:1128)
- 10. Chartreuse (Sul-R:1322)
- 11. Blue Black (Sul-R:1182)

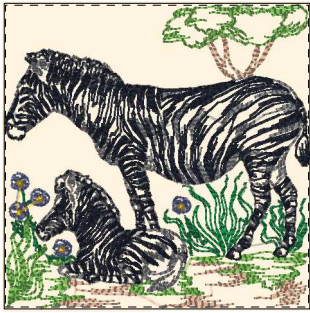
Safari_mama_baby_07-4x4.dst
3.79x3.85 inches; 16,224 stitches
11 thread changes; 11 colors



- 1. Drab Green (Sul-R:1228)
- 2. Nile Green (Sul-R:1274)
- 3. Garden Green (Sul-R:569)
- 4. (Sul-R:1290)
- 5. Goldenrod (Sul-R:1024)
- 6. Rust (Sul-R:1181)
- 7. Toast (Sul-R:1266)
- 8. Dk. Ecru (Sul-R:1128)
- 9. Toast (Sul-R:1266)
- 10. Blue Black (Sul-R:1182)

Safari_mama_baby_08-4x4.dst
3.90x3.92 inches; 14,787 stitches
10 thread changes; 9 colors

Printed 2/2/2014



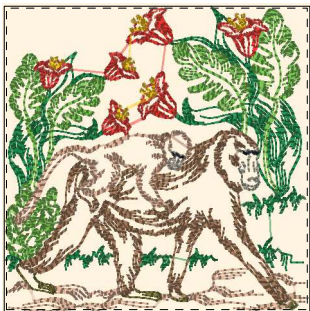
- 1. Dk. Ecreu (Sul-R:1128)
- 2. Nile Green (Sul-R:1274)
- 3. Garden Green (Sul-R:569)
- 4. Xmas Green (Sul-R:1051)
- 5. Gray (Sul-R:1219)
- 6. Blue Black (Sul-R:1182)
- 7. Dusty Navy (Sul-R:1198)
- 8. Goldenrod (Sul-R:1024)

Safari_mama_baby_09-4x4.dst
3.91x3.89 inches; 19,981 stitches
8 thread changes; 8 colors



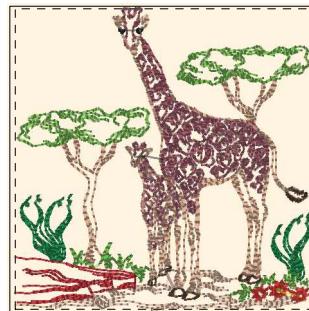
- 1. Nile Green (Sul-R:1274)
- 2. Garden Green (Sul-R:569)
- 3. Xmas Green (Sul-R:1051)
- 4. Poppy (Sul-R:1317)
- 5. Goldenrod (Sul-R:1024)
- 6. Toast (Sul-R:1266)
- 7. Gray (Sul-R:1219)
- 8. Duck Wing Blue (Sul-R:1250)
- 9. Blue Black (Sul-R:1182)

Safari_mama_baby_10-4x4.dst
3.91x3.91 inches; 15,549 stitches
9 thread changes; 9 colors



- 1. Garden Green (Sul-R:569)
- 2. Nile Green (Sul-R:1274)
- 3. Poppy (Sul-R:1317)
- 4. Goldenrod (Sul-R:1024)
- 5. Drab Green (Sul-R:1228)
- 6. Toast (Sul-R:1266)
- 7. Dk. Ecreu (Sul-R:1128)
- 8. Putty (Sul-R:1508)
- 9. Blue Black (Sul-R:1182)

Safari_mama_baby_11-4x4.dst
3.88x3.89 inches; 16,373 stitches
9 thread changes; 9 colors



- 1. Med. Dk. Ecreu (Sul-R:1054)
- 2. Dk. Ecreu (Sul-R:1128)
- 3. Nile Green (Sul-R:1274)
- 4. Garden Green (Sul-R:569)
- 5. Rust (Sul-R:1181)
- 6. Poppy (Sul-R:1317)
- 7. Goldenrod (Sul-R:1024)
- 8. Med. Burgundy (Sul-R:1190)
- 9. Sable Brown (Sul-R:1186)
- 10. Dk. Ecreu (Sul-R:1128)
- 11. Blue Black (Sul-R:1182)

Safari_mama_baby_12-4x4.dst
3.80x3.87 inches; 12,460 stitches
11 thread changes; 10 colors