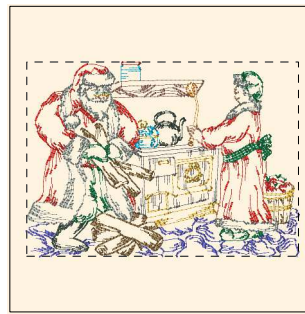




- 1. (Sul-R:1260)
- 2. Butterfly Gold (Sul-R:567)
- 3. Poppy (Sul-R:1317)
- 4. Burnt Toast (Sul-R:1265)
- 5. Emerald Green (Sul-R:1079)
- 6. (Sul-R:1269)
- 7. Dk. Gray Khaki (Sul-R:1270)
- 8. Gray Khaki (Sul-R:1321)
- 9. Dk. Ecru (Sul-R:1128)
- 10. Bright Peacock (Sul-R:1252)
- 11. Evergreen (Sul-R:1271)

Santa_and_mrs_claus_01-5x7.dst

7.00x4.93 inches; 19,031 stitches
11 thread changes; 11 colors



- 1. Nassau Blue (Sul-R:1242)
- 2. Butterfly Gold (Sul-R:567)
- 3. Evergreen (Sul-R:1271)
- 4. Poppy (Sul-R:1317)
- 5. Burnt Toast (Sul-R:1265)
- 6. Emerald Green (Sul-R:1079)
- 7. (Sul-R:1269)
- 8. Gray (Sul-R:1219)
- 9. Dk. Ecru (Sul-R:1128)
- 10. (Sul-R:1260)
- 11. Dk. Gray Khaki (Sul-R:1270)
- 12. Bright Peacock (Sul-R:1252)

Santa_and_mrs_claus_02-5x7.dst

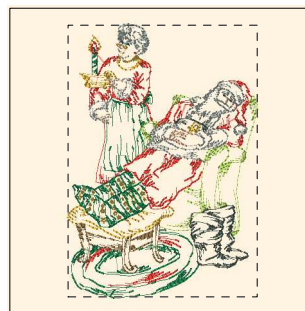
6.99x5.00 inches; 19,753 stitches
12 thread changes; 12 colors



- 1. Butterfly Gold (Sul-R:567)
- 2. Med. Maple (Sul-R:1216)
- 3. Emerald Green (Sul-R:1079)
- 4. Poppy (Sul-R:1317)
- 5. Burnt Toast (Sul-R:1265)
- 6. Gray (Sul-R:1219)
- 7. Dk. Ecru (Sul-R:1128)
- 8. (Sul-R:1260)
- 9. Dk. Gray Khaki (Sul-R:1270)
- 10. Deep Ecru (Sul-R:1149)
- 11. Bright Peacock (Sul-R:1252)
- 12. Evergreen (Sul-R:1271)

Santa_and_mrs_claus_03-5x7.dst

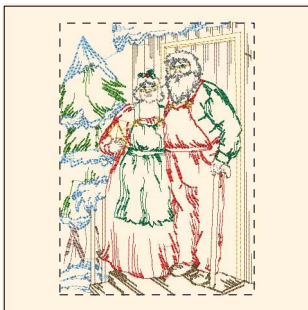
5.00x6.85 inches; 18,989 stitches
12 thread changes; 12 colors



- 1. (Sul-R:1260)
- 2. Emerald Green (Sul-R:1079)
- 3. Poppy (Sul-R:1317)
- 4. Burnt Toast (Sul-R:1265)
- 5. Deep Chartreuse (Sul-R:1332)
- 6. Dk. Ecru (Sul-R:1128)
- 7. Dk. Gray Khaki (Sul-R:1270)
- 8. Gray Khaki (Sul-R:1321)
- 9. Deep Ecru (Sul-R:1149)
- 10. Bright Peacock (Sul-R:1252)
- 11. Evergreen (Sul-R:1271)

Santa_and_mrs_claus_04-5x7.dst

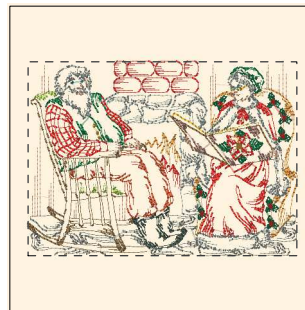
4.87x6.99 inches; 17,667 stitches
11 thread changes; 11 colors



- 1. Grass Green (Sul-R:1049)
- 2. Poppy (Sul-R:1317)
- 3. Emerald Green (Sul-R:1079)
- 4. Burnt Toast (Sul-R:1265)
- 5. (Sul-R:1269)
- 6. Dk. Gray Khaki (Sul-R:1270)
- 7. Deep Ecru (Sul-R:1149)
- 8. (Sul-R:1260)
- 9. Bright Peacock (Sul-R:1252)
- 10. Cornflower Blue (Sul-R:1249)
- 11. Evergreen (Sul-R:1271)

Santa_and_mrs_claus_05-5x7.dst

5.01x7.00 inches; 16,741 stitches
11 thread changes; 11 colors



- 1. Butterfly Gold (Sul-R:567)
- 2. Emerald Green (Sul-R:1079)
- 3. Poppy (Sul-R:1317)
- 4. Maple (Sul-R:1021)
- 5. Burnt Toast (Sul-R:1265)
- 6. Deep Chartreuse (Sul-R:1332)
- 7. (Sul-R:1269)
- 8. (Sul-R:610)
- 9. Dk. Gray Khaki (Sul-R:1270)
- 10. Dk. Ecru (Sul-R:1128)
- 11. (Sul-R:1260)
- 12. Evergreen (Sul-R:1271)
- 13. Bright Peacock (Sul-R:1252)

Santa_and_mrs_claus_06-5x7.dst

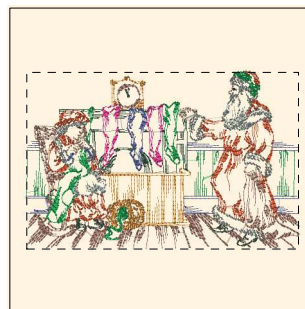
6.93x5.00 inches; 24,941 stitches
13 thread changes; 13 colors



- 1. Butterfly Gold (Sul-R:567)
- 2. Evergreen (Sul-R:1271)
- 3. Forest Green (Sul-R:538)
- 4. Maple (Sul-R:1021)
- 5. Emerald Green (Sul-R:1079)
- 6. Med. Dk. Khaki (Sul-R:1040)
- 7. (Sul-R:1269)
- 8. Med. Dk. Ecru (Sul-R:1054)
- 9. Dusty Navy (Sul-R:1198)
- 10. Dk. Gray Khaki (Sul-R:1270)
- 11. Med. Purple (Sul-R:1032)
- 12. Duck Wing Blue (Sul-R:1250)
- 13. Cornflower Blue (Sul-R:1249)
- 14. Evergreen (Sul-R:1271)

Santa_and_mrs_claus_07-5x7.dst

6.66x5.00 inches; 21,038 stitches
14 thread changes; 13 colors



- 1. Butterfly Gold (Sul-R:567)
- 2. Evergreen (Sul-R:1271)
- 3. Forest Green (Sul-R:538)
- 4. Maple (Sul-R:1021)
- 5. (Sul-R:1269)
- 6. Bright Green (Sul-R:1278)
- 7. Deep Rose (Sul-R:1511)
- 8. Med. Dk. Ecru (Sul-R:1054)
- 9. Dusty Navy (Sul-R:1198)
- 10. Dk. Gray Khaki (Sul-R:1270)
- 11. Bright Peacock (Sul-R:1252)
- 12. Blackberry (Sul-R:1215)

Santa_and_mrs_claus_08-5x7.dst

7.00x4.56 inches; 22,719 stitches
12 thread changes; 12 colors



- 1. Butterfly Gold (Sul-R:567)
- 2. Evergreen (Sul-R:1271)
- 3. Forest Green (Sul-R:538)
- 4. Poppy (Sul-R:1317)
- 5. Maple (Sul-R:1021)
- 6. Bright Green (Sul-R:1278)
- 7. Med. Dk. Ecru (Sul-R:1054)
- 8. Dusty Navy (Sul-R:1198)
- 9. Dk. Gray Khaki (Sul-R:1270)
- 10. Med. Purple (Sul-R:1032)
- 11. Duck Wing Blue (Sul-R:1250)
- 12. Bright Peacock (Sul-R:1252)

Santa_and_mrs_claus_09-5x7.dst

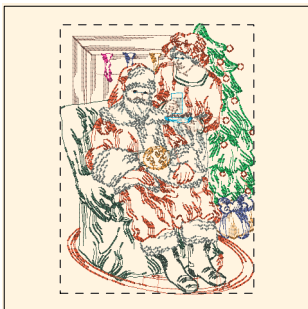
4.99x6.76 inches; 20,230 stitches
12 thread changes; 12 colors



- 1. (Sul-R:1269)
- 2. Butterfly Gold (Sul-R:567)
- 3. Evergreen (Sul-R:1271)
- 4. Forest Green (Sul-R:538)
- 5. Poppy (Sul-R:1317)
- 6. Maple (Sul-R:1021)
- 7. (Sul-R:1269)
- 8. Bright Green (Sul-R:1278)
- 9. Med. Dk. Ecru (Sul-R:1054)
- 10. Dk. Gray Khaki (Sul-R:1270)
- 11. Bright Peacock (Sul-R:1252)
- 12. Blackberry (Sul-R:1215)

Santa_and_mrs_claus_10-5x7.dst

5.00x6.87 inches; 19,567 stitches
12 thread changes; 11 colors



- 1. Butterfly Gold (Sul-R:567)
- 2. Evergreen (Sul-R:1271)
- 3. Forest Green (Sul-R:538)
- 4. Maple (Sul-R:1021)
- 5. (Sul-R:1269)
- 6. Bright Green (Sul-R:1278)
- 7. Deep Rose (Sul-R:1511)
- 8. Med. Dk. Ecru (Sul-R:1054)
- 9. Dusty Navy (Sul-R:1198)
- 10. Dk. Gray Khaki (Sul-R:1270)
- 11. Bright Peacock (Sul-R:1252)
- 12. Blackberry (Sul-R:1215)

Santa_and_mrs_claus_11-5x7.dst

4.99x6.92 inches; 21,921 stitches
12 thread changes; 12 colors



- 1. Butterfly Gold (Sul-R:567)
- 2. Evergreen (Sul-R:1271)
- 3. Forest Green (Sul-R:538)
- 4. Maple (Sul-R:1021)
- 5. Moss Green (Sul-R:630)
- 6. (Sul-R:1269)
- 7. Deep Rose (Sul-R:1511)
- 8. Med. Dk. Ecru (Sul-R:1054)
- 9. Dusty Navy (Sul-R:1198)
- 10. Dk. Gray Khaki (Sul-R:1270)
- 11. Med. Purple (Sul-R:1032)
- 12. Duck Wing Blue (Sul-R:1250)
- 13. Bright Peacock (Sul-R:1252)
- 14. Blackberry (Sul-R:1215)

Santa_and_mrs_claus_12-5x7.dst

4.95x7.00 inches; 19,042 stitches
14 thread changes; 14 colors