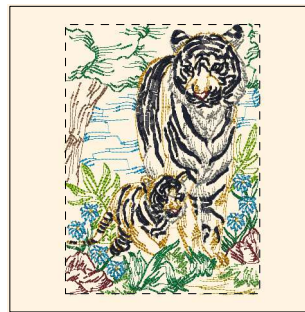


- 1. Duck Wing Blue (Sul-R:1250)
- 2. Grass Green (Sul-R:1049)
- 3. Xmas Green (Sul-R:1051)
- 4. Poppy (Sul-R:1317)
- 5. Drab Green (Sul-R:1228)
- 6. Toast (Sul-R:1266)
- 7. Putty (Sul-R:1508)
- 8. Sunflower Gold (Sul-R:1333)
- 9. Blue Black (Sul-R:1182)
- 10. Goldenrod (Sul-R:1024)
- 11. Rust (Sul-R:1181)

**Tiger\_01-5x7.dst**

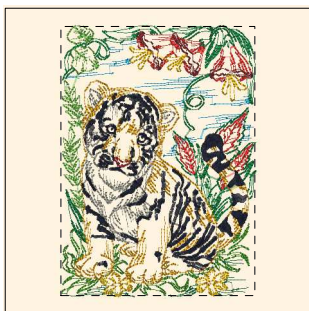
5.00x7.00 inches; 24,727 stitches  
11 thread changes; 11 colors



- 1. Toast (Sul-R:1266)
- 2. (Sul-R:1244)
- 3. Avocado (Sul-R:1177)
- 4. Nile Green (Sul-R:1274)
- 5. Garden Green (Sul-R:569)
- 6. Xmas Green (Sul-R:1051)
- 7. Duck Wing Blue (Sul-R:1250)
- 8. Goldenrod (Sul-R:1024)
- 9. Putty (Sul-R:1508)
- 10. Sunflower Gold (Sul-R:1333)
- 11. Blue Black (Sul-R:1182)
- 12. Deep Mauve (Sul-R:1237)

**Tiger\_02-5x7.dst**

5.00x6.94 inches; 27,214 stitches  
12 thread changes; 12 colors



- 1. Duck Wing Blue (Sul-R:1250)
- 2. Poppy (Sul-R:1317)
- 3. Deep Mauve (Sul-R:1237)
- 4. Grass Green (Sul-R:1049)
- 5. Nile Green (Sul-R:1274)
- 6. Garden Green (Sul-R:569)
- 7. Xmas Green (Sul-R:1051)
- 8. Goldenrod (Sul-R:1024)
- 9. Putty (Sul-R:1508)
- 10. Sunflower Gold (Sul-R:1333)
- 11. Blue Black (Sul-R:1182)
- 12. Rust (Sul-R:1181)

**Tiger\_03-5x7.dst**

5.00x6.94 inches; 25,816 stitches  
12 thread changes; 12 colors



- 1. Duck Wing Blue (Sul-R:1250)
- 2. (Sul-R:1244)
- 3. Nile Green (Sul-R:1274)
- 4. Garden Green (Sul-R:569)
- 5. (Sul-R:622)
- 6. Fuchsia (Sul-R:1192)
- 7. Coral (Sul-R:1154)
- 8. Poppy (Sul-R:1317)
- 9. Toast (Sul-R:1266)
- 10. Sunflower Gold (Sul-R:1333)
- 11. Blue Black (Sul-R:1182)

**Tiger\_04-5x7.dst**

5.00x6.87 inches; 25,910 stitches  
11 thread changes; 11 colors



- 1. Toast (Sul-R:1266)
- 2. Mint Julep (Sul-R:580)
- 3. Grass Green (Sul-R:1049)
- 4. Garden Green (Sul-R:569)
- 5. Xmas Green (Sul-R:1051)
- 6. Goldenrod (Sul-R:1024)
- 7. Poppy (Sul-R:1317)
- 8. Rust (Sul-R:1181)
- 9. (Sul-R:1290)
- 10. Duck Wing Blue (Sul-R:1250)
- 11. Putty (Sul-R:1508)
- 12. Sunflower Gold (Sul-R:1333)
- 13. Blue Black (Sul-R:1182)

**Tiger\_05-5x7.dst**

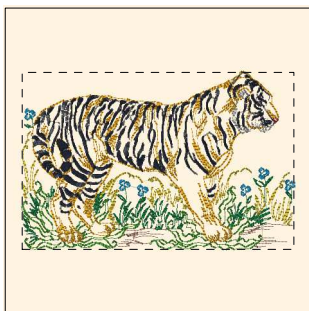
5.00x6.82 inches; 25,823 stitches  
13 thread changes; 13 colors



- 1. Drab Green (Sul-R:1228)
- 2. (Sul-R:1244)
- 3. Grass Green (Sul-R:1049)
- 4. Garden Green (Sul-R:569)
- 5. Xmas Green (Sul-R:1051)
- 6. Toast (Sul-R:1266)
- 7. Putty (Sul-R:1508)
- 8. (Sul-R:1290)
- 9. Duck Wing Blue (Sul-R:1250)
- 10. Goldenrod (Sul-R:1024)
- 11. Sunflower Gold (Sul-R:1333)
- 12. Blue Black (Sul-R:1182)
- 13. Rust (Sul-R:1181)

**Tiger\_06-5x7.dst**

5.00x6.94 inches; 23,297 stitches  
13 thread changes; 13 colors



- 1. (Sul-R:1269)
- 2. Grass Green (Sul-R:1049)
- 3. Xmas Green (Sul-R:1051)
- 4. (Sul-R:1244)
- 5. Steel Gray (Sul-R:1011)
- 6. Duck Wing Blue (Sul-R:1250)
- 7. Sunflower Gold (Sul-R:1333)
- 8. Blue Black (Sul-R:1182)
- 9. Rust (Sul-R:1181)

**Tiger\_07-5x7.dst**

6.99x4.56 inches; 20,344 stitches  
9 thread changes; 9 colors



- 1. (Sul-R:1269)
- 2. Grass Green (Sul-R:1049)
- 3. Nile Green (Sul-R:1274)
- 4. Garden Green (Sul-R:569)
- 5. Xmas Green (Sul-R:1051)
- 6. Dk. Ecu (Sul-R:1128)
- 7. Putty (Sul-R:1508)
- 8. Duck Wing Blue (Sul-R:1250)
- 9. (Sul-R:1290)
- 10. Goldenrod (Sul-R:1024)
- 11. Sunflower Gold (Sul-R:1333)
- 12. Blue Black (Sul-R:1182)
- 13. Rust (Sul-R:1181)

**Tiger\_08-5x7.dst**

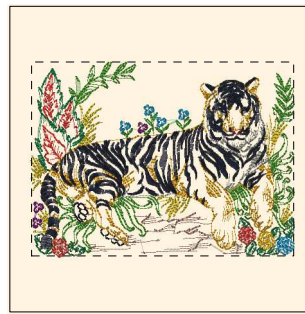
6.90x5.00 inches; 21,391 stitches  
13 thread changes; 13 colors



- 1. Dk. Ecreu (Sul-R:1128)
- 2. Duck Wing Blue (Sul-R:1250)
- 3. Toast (Sul-R:1266)
- 4. (Sul-R:1244)
- 5. (Sul-R:1269)
- 6. Nile Green (Sul-R:1274)
- 7. Garden Green (Sul-R:569)
- 8. Xmas Green (Sul-R:1051)
- 9. Putty (Sul-R:1508)
- 10. Blue Black (Sul-R:1182)
- 11. Rust (Sul-R:1181)
- 12. Sunflower Gold (Sul-R:1333)

**Tiger\_09-5x7.dst**

6.76x5.00 inches; 19,625 stitches  
12 thread changes; 12 colors



- 1. (Sul-R:1269)
- 2. (Sul-R:1244)
- 3. Poppy (Sul-R:1317)
- 4. Grass Green (Sul-R:1049)
- 5. Xmas Green (Sul-R:1051)
- 6. Fuchsia (Sul-R:1192)
- 7. Goldenrod (Sul-R:1024)
- 8. Duck Wing Blue (Sul-R:1250)
- 9. Putty (Sul-R:1508)
- 10. Sunflower Gold (Sul-R:1333)
- 11. Blue Black (Sul-R:1182)
- 12. Rust (Sul-R:1181)

**Tiger\_10-5x7.dst**

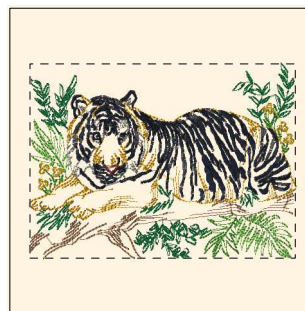
6.75x5.00 inches; 26,058 stitches  
12 thread changes; 12 colors



- 1. Dk. Ecreu (Sul-R:1128)
- 2. (Sul-R:1244)
- 3. Nile Green (Sul-R:1274)
- 4. Garden Green (Sul-R:569)
- 5. Xmas Green (Sul-R:1051)
- 6. Duck Wing Blue (Sul-R:1250)
- 7. (Sul-R:1290)
- 8. Goldenrod (Sul-R:1024)
- 9. Putty (Sul-R:1508)
- 10. Sunflower Gold (Sul-R:1333)
- 11. Blue Black (Sul-R:1182)
- 12. Rust (Sul-R:1181)

**Tiger\_11-5x7.dst**

6.83x5.00 inches; 28,936 stitches  
12 thread changes; 12 colors



- 1. Toast (Sul-R:1266)
- 2. Grass Green (Sul-R:1049)
- 3. Nile Green (Sul-R:1274)
- 4. Xmas Green (Sul-R:1051)
- 5. Goldenrod (Sul-R:1024)
- 6. Putty (Sul-R:1508)
- 7. Sunflower Gold (Sul-R:1333)
- 8. Blue Black (Sul-R:1182)
- 9. Rust (Sul-R:1181)

**Tiger\_12-5x7.dst**

6.83x5.00 inches; 21,700 stitches  
9 thread changes; 9 colors