



- 1. Cornsilk (Sul-R:502)
- 2. Coral Reef (Sul-R:1258)
- 3. Dk. Ecru (Sul-R:1128)
- 4. Pastel Yellow (Sul-R:1135)
- 5. Tan (Sul-R:1126)
- 6. Ivy Green (Sul-R:1277)
- 7. Pastel Yellow (Sul-R:1135)
- 8. Wine (Sul-R:1312)
- 9. Med. Steel Gray (Sul-R:1166)
- 10. Eggplant (Sul-R:1302)
- 11. Cornflower Blue (Sul-R:1249)
- 12. Blue Black (Sul-R:1182)
- 13. Bright White (Sul-R:1001)

Sew Snowy Birdhouse 5x7.dst
3.13x7.00 inches; 14,723 stitches
13 thread changes; 12 colors



- 1. Bright White (Sul-R:1001)
- 2. Coral Reef (Sul-R:1258)
- 3. Cornflower Blue (Sul-R:1249)
- 4. Coral Reef (Sul-R:1258)
- 5. Blue Black (Sul-R:1182)
- 6. Cornflower Blue (Sul-R:1249)
- 7. Bright White (Sul-R:1001)
- 8. Eggplant (Sul-R:1302)
- 9. Wine (Sul-R:1312)
- 10. Blue Black (Sul-R:1182)
- 11. (Sul-R:1260)

Sew Snowy Boy 5x7.dst
4.23x6.01 inches; 12,617 stitches
11 thread changes; 7 colors



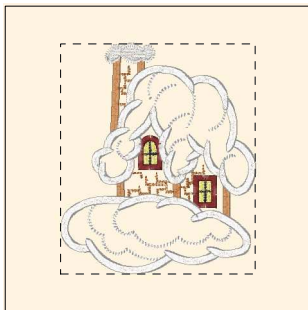
- 1. Bright White (Sul-R:1001)
- 2. Coral Reef (Sul-R:1258)
- 3. Eggplant (Sul-R:1302)
- 4. Coral Reef (Sul-R:1258)
- 5. Bright White (Sul-R:1001)
- 6. Blue Black (Sul-R:1182)
- 7. Eggplant (Sul-R:1302)
- 8. (Sul-R:1319)
- 9. Wine (Sul-R:1312)
- 10. Ivy Green (Sul-R:1277)
- 11. (Sul-R:1260)
- 12. Primrose (Sul-R:1066)
- 13. Yellow (Sul-R:1023)
- 14. Bright White (Sul-R:1001)
- 15. Blue Black (Sul-R:1182)
- 16. (Sul-R:1260)

Sew Snowy Dad 5x7.dst
4.09x7.01 inches; 13,917 stitches
16 thread changes; 10 colors



- 1. Bright White (Sul-R:1001)
- 2. Coral Reef (Sul-R:1258)
- 3. Eggplant (Sul-R:1302)
- 4. Coral Reef (Sul-R:1258)
- 5. Bright White (Sul-R:1001)
- 6. Eggplant (Sul-R:1302)
- 7. Blue Black (Sul-R:1182)
- 8. Wine (Sul-R:1312)
- 9. Bright White (Sul-R:1001)
- 10. Mimosa Yellow (Sul-R:1187)
- 11. (Sul-R:1260)
- 12. Wine (Sul-R:1312)
- 13. Lemon Yellow (Sul-R:1067)
- 14. Wine (Sul-R:1312)
- 15. Eggplant (Sul-R:1302)

Sew Snowy Girl 5x7.dst
4.54x5.26 inches; 13,269 stitches
15 thread changes; 8 colors



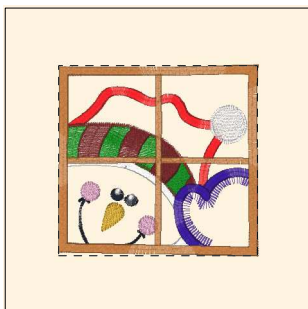
- 1. Tan (Sul-R:1126)
- 2. Coral Reef (Sul-R:1258)
- 3. Bright White (Sul-R:1001)
- 4. Coral Reef (Sul-R:1258)
- 5. Pastel Yellow (Sul-R:1135)
- 6. Blue Black (Sul-R:1182)
- 7. Wine (Sul-R:1312)
- 8. Tan (Sul-R:1126)
- 9. Bright White (Sul-R:1001)

Sew Snowy House 5x7.dst
5.01x5.92 inches; 10,500 stitches
9 thread changes; 6 colors



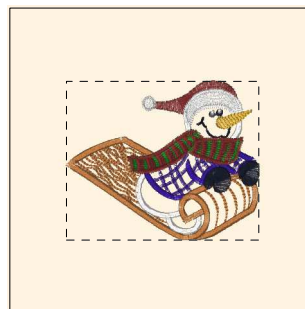
- 1. Bright White (Sul-R:1001)
- 2. Coral Reef (Sul-R:1258)
- 3. Pink (Sul-R:1121)
- 4. Coral Reef (Sul-R:1258)
- 5. Bright White (Sul-R:1001)
- 6. Blue Black (Sul-R:1182)
- 7. (Sul-R:1319)
- 8. Pink (Sul-R:1121)
- 9. Orchid (Sul-R:1080)
- 10. Med. Rose (Sul-R:1231)
- 11. Bright White (Sul-R:1001)
- 12. Blue Black (Sul-R:1182)
- 13. (Sul-R:1260)
- 14. Cornflower Blue (Sul-R:1249)
- 15. Eggplant (Sul-R:1302)
- 16. Ivy Green (Sul-R:1277)
- 17. Wine (Sul-R:1312)

Sew Snowy Mom 5x7.dst
5.00x6.53 inches; 15,870 stitches
17 thread changes; 12 colors



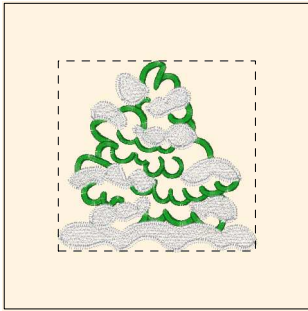
- 1. (Sul-R:1319)
- 2. Coral Reef (Sul-R:1258)
- 3. Bright White (Sul-R:1001)
- 4. Coral Reef (Sul-R:1258)
- 5. Eggplant (Sul-R:1302)
- 6. Coral Reef (Sul-R:1258)
- 7. Blue Black (Sul-R:1182)
- 8. Coral Reef (Sul-R:1258)
- 9. (Sul-R:1319)
- 10. Blue Black (Sul-R:1182)
- 11. Bright White (Sul-R:1001)
- 12. Ivy Green (Sul-R:1277)
- 13. Wine (Sul-R:1312)
- 14. Eggplant (Sul-R:1302)
- 15. Lt. Pink (Sul-R:1115)
- 16. (Sul-R:1260)
- 17. Tan (Sul-R:1126)

Sew Snowy Outside 5x7#.dst
5.12x4.90 inches; 13,321 stitches
17 thread changes; 10 colors



- 1. Tan (Sul-R:1126)
- 2. Coral Reef (Sul-R:1258)
- 3. Bright White (Sul-R:1001)
- 4. Coral Reef (Sul-R:1258)
- 5. Eggplant (Sul-R:1302)
- 6. Coral Reef (Sul-R:1258)
- 7. Tan (Sul-R:1126)
- 8. Bright White (Sul-R:1001)
- 9. Eggplant (Sul-R:1302)
- 10. Tan (Sul-R:1126)
- 11. Wine (Sul-R:1312)
- 12. Blue Black (Sul-R:1182)
- 13. Bright White (Sul-R:1001)
- 14. (Sul-R:1260)
- 15. Ivy Green (Sul-R:1277)
- 16. Wine (Sul-R:1312)

Sew Snowy Sleigh Ride 5x7.dst
4.96x4.09 inches; 14,369 stitches
16 thread changes; 8 colors



- 1. Cornsilk (Sul-R:502)
- 2. Coral Reef (Sul-R:1258)
- 3. Ivy Green (Sul-R:1277)
- 4. Bright White (Sul-R:1001)

Sew Snowy Tree 5x7.dst
5.08x4.89 inches; 14,154 stitches
4 thread changes; 4 colors