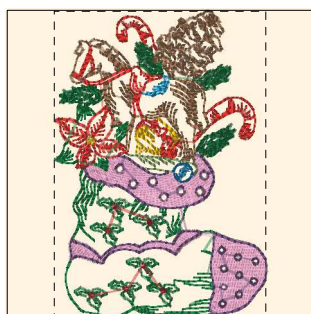


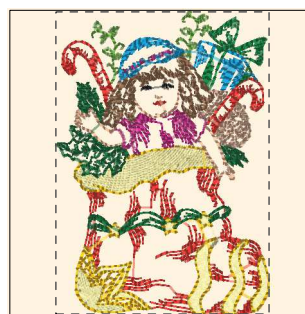
Printed 2/2/2014



- 1. Garden Green (Sul-R:569)
- 2. Mauve (Sul-R:1117)
- 3. Goldenrod (Sul-R:1024)
- 4. Poppy (Sul-R:1317)
- 5. Rust (Sul-R:1181)
- 6. Garden Green (Sul-R:569)
- 7. Xmas Green (Sul-R:1051)
- 8. Toast (Sul-R:1266)
- 9. Pistachio (Sul-R:1276)
- 10. Lt. Plum (Sul-R:1297)
- 11. (Sul-R:1290)
- 12. Duck Wing Blue (Sul-R:1250)
- 13. Blue Black (Sul-R:1182)

**Christmas\_stockings\_01-4x4.dst**

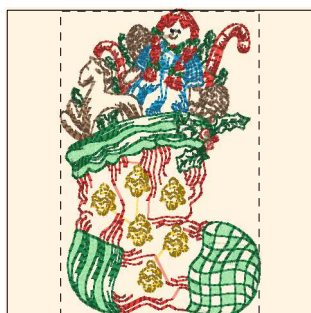
2.72x3.91 inches; 14,547 stitches  
13 thread changes; 12 colors



- 1. Nile Green (Sul-R:1274)
- 2. Poppy (Sul-R:1317)
- 3. Primrose (Sul-R:1066)
- 4. Goldenrod (Sul-R:1024)
- 5. Garden Green (Sul-R:569)
- 6. Xmas Green (Sul-R:1051)
- 7. Med. Rose (Sul-R:1231)
- 8. Dusty Peach (Sul-R:619)
- 9. Toast (Sul-R:1266)
- 10. Dk. Ecru (Sul-R:1128)
- 11. Duck Wing Blue (Sul-R:1250)
- 12. Blue Black (Sul-R:1182)

**Christmas\_stockings\_02-4x4.dst**

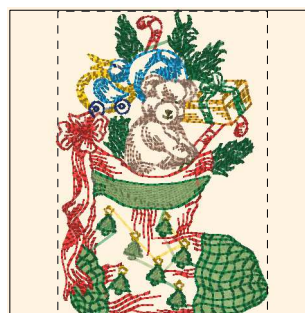
2.74x3.89 inches; 11,722 stitches  
12 thread changes; 12 colors



- 1. Willow Green (Sul-R:1279)
- 2. Goldenrod (Sul-R:1024)
- 3. Poppy (Sul-R:1317)
- 4. Garden Green (Sul-R:569)
- 5. Xmas Green (Sul-R:1051)
- 6. Toast (Sul-R:1266)
- 7. Duck Wing Blue (Sul-R:1250)
- 8. Blue Black (Sul-R:1182)

**Christmas\_stockings\_03-4x4.dst**

2.56x3.91 inches; 11,441 stitches  
8 thread changes; 8 colors



- 1. Pistachio (Sul-R:1276)
- 2. Goldenrod (Sul-R:1024)
- 3. Sunflower Gold (Sul-R:1333)
- 4. Poppy (Sul-R:1317)
- 5. Xmas Green (Sul-R:1051)
- 6. Drab Green (Sul-R:1228)
- 7. Garden Green (Sul-R:569)
- 8. Dk. Ecru (Sul-R:1128)
- 9. Team Blue (Sul-R:1535)
- 10. Putty (Sul-R:1508)
- 11. Duck Wing Blue (Sul-R:1250)

**Christmas\_stockings\_04-4x4.dst**

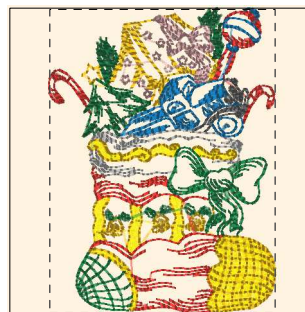
2.70x3.91 inches; 13,383 stitches  
11 thread changes; 11 colors



- 1. Xmas Green (Sul-R:1051)
- 2. Grass Green (Sul-R:1049)
- 3. Lemon Yellow (Sul-R:1067)
- 4. Med. Dk. Ecru (Sul-R:1054)
- 5. Goldenrod (Sul-R:1024)
- 6. Toast (Sul-R:1266)
- 7. Duck Wing Blue (Sul-R:1250)
- 8. Taupe (Sul-R:1213)
- 9. Med. Dk. Ecru (Sul-R:1054)
- 10. Poppy (Sul-R:1317)
- 11. Pistachio (Sul-R:1276)
- 12. Blue Black (Sul-R:1182)

**Christmas\_stockings\_05-4x4.dst**

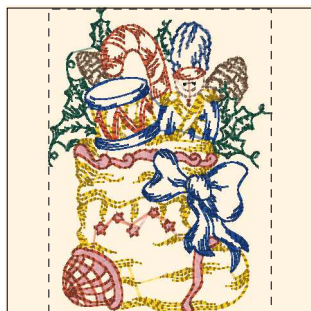
2.71x3.91 inches; 13,611 stitches  
12 thread changes; 11 colors



- 1. Mimosa Yellow (Sul-R:1187)
- 2. Goldenrod (Sul-R:1024)
- 3. Poppy (Sul-R:1317)
- 4. Garden Green (Sul-R:569)
- 5. Xmas Green (Sul-R:1051)
- 6. Med. Dk. Khaki (Sul-R:1040)
- 7. (Sul-R:1290)
- 8. Steel Gray (Sul-R:1011)
- 9. Taupe (Sul-R:1213)
- 10. (Sul-R:1290)

**Christmas\_stockings\_06-4x4.dst**

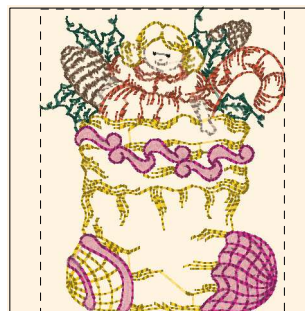
2.90x3.91 inches; 12,416 stitches  
10 thread changes; 9 colors



- 1. Goldenrod (Sul-R:1024)
- 2. Toast (Sul-R:1266)
- 3. Mallard Green (Sul-R:1208)
- 4. Taupe (Sul-R:1213)
- 5. Maple (Sul-R:1021)
- 6. Team Blue (Sul-R:1535)
- 7. Med. Dk. Ecru (Sul-R:1054)
- 8. Blue Black (Sul-R:1182)

**Christmas\_stockings\_07-4x4.dst**

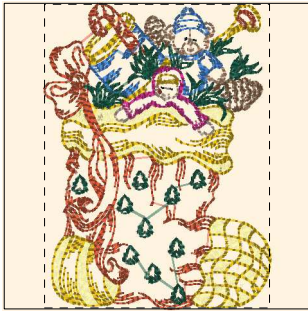
2.87x3.91 inches; 10,220 stitches  
8 thread changes; 8 colors



- 1. Mallard Green (Sul-R:1208)
- 2. Toast (Sul-R:1266)
- 3. Maple (Sul-R:1021)
- 4. Spark Gold (Sul-R:1083)
- 5. Taupe (Sul-R:1213)
- 6. Med. Rose (Sul-R:1231)
- 7. Deep Ecru (Sul-R:1149)
- 8. Blue Black (Sul-R:1182)

**Christmas\_stockings\_08-4x4.dst**

3.15x3.91 inches; 10,055 stitches  
8 thread changes; 8 colors



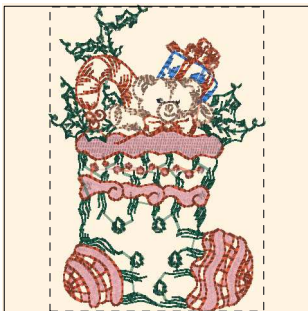
- 1. Primrose (Sul-R:1066)
- 2. Spark Gold (Sul-R:1083)
- 3. Maple (Sul-R:1021)
- 4. Mallard Green (Sul-R:1208)
- 5. Toast (Sul-R:1266)
- 6. Dk. Ecreu (Sul-R:1128)
- 7. Med. Rose (Sul-R:1231)
- 8. Deep Ecreu (Sul-R:1149)
- 9. Royal Blue (Sul-R:1076)
- 10. Blue Black (Sul-R:1182)

**Christmas\_stockings\_09-4x4.dst**  
 2.90x3.91 inches; 12,040 stitches  
 10 thread changes; 10 colors



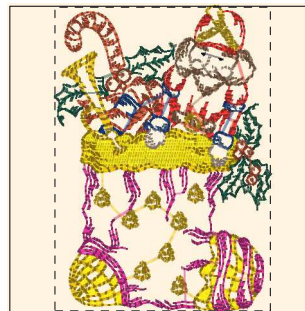
- 1. Maple (Sul-R:1021)
- 2. Dk. Willow Green (Sul-R:1280)
- 3. Mallard Green (Sul-R:1208)
- 4. Spark Gold (Sul-R:1083)
- 5. Deep Eggplant (Sul-R:1301)
- 6. Dk. Ecreu (Sul-R:1128)
- 7. Med. Rose (Sul-R:1231)
- 8. Deep Ecreu (Sul-R:1149)
- 9. Royal Blue (Sul-R:1076)
- 10. Blue Black (Sul-R:1182)

**Christmas\_stockings\_10-4x4.dst**  
 2.79x3.91 inches; 11,918 stitches  
 10 thread changes; 10 colors



- 1. Dk. Ecreu (Sul-R:1128)
- 2. Royal Blue (Sul-R:1076)
- 3. Taupe (Sul-R:1213)
- 4. Mallard Green (Sul-R:1208)
- 5. Maple (Sul-R:1021)
- 6. Blue Black (Sul-R:1182)

**Christmas\_stockings\_11-4x4.dst**  
 2.76x3.92 inches; 10,046 stitches  
 6 thread changes; 6 colors



- 1. Mimosa Yellow (Sul-R:1187)
- 2. Spark Gold (Sul-R:1083)
- 3. Med. Rose (Sul-R:1231)
- 4. Mallard Green (Sul-R:1208)
- 5. Poppy (Sul-R:1317)
- 6. Maple (Sul-R:1021)
- 7. Toast (Sul-R:1266)
- 8. Team Blue (Sul-R:1535)
- 9. Deep Ecreu (Sul-R:1149)
- 10. Blue Black (Sul-R:1182)

**Christmas\_stockings\_12-4x4.dst**  
 2.78x3.91 inches; 12,856 stitches  
 10 thread changes; 10 colors