

Printed 2/2/2014



- 1. Garden Green (Sul-R:569)
- 2. Mauve (Sul-R:1117)
- 3. Goldenrod (Sul-R:1024)
- 4. Poppy (Sul-R:1317)
- 5. Rust (Sul-R:1181)
- 6. Garden Green (Sul-R:569)
- 7. Xmas Green (Sul-R:1051)
- 8. Toast (Sul-R:1266)
- 9. Pistachio (Sul-R:1276)
- 10. Lt. Plum (Sul-R:1297)
- 11. (Sul-R:1290)
- 12. Duck Wing Blue (Sul-R:1250)
- 13. Blue Black (Sul-R:1182)

Christmas_stockings_01-5x7.dst

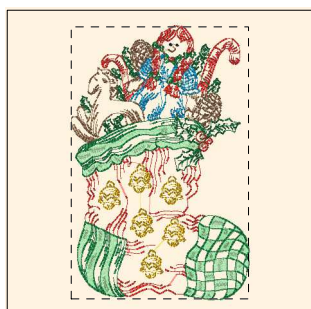
4.86x6.98 inches; 22,239 stitches
13 thread changes; 12 colors



- 1. Nile Green (Sul-R:1274)
- 2. Poppy (Sul-R:1317)
- 3. Primrose (Sul-R:1066)
- 4. Goldenrod (Sul-R:1024)
- 5. Garden Green (Sul-R:569)
- 6. Xmas Green (Sul-R:1051)
- 7. Med. Rose (Sul-R:1231)
- 8. Dusty Peach (Sul-R:619)
- 9. Toast (Sul-R:1266)
- 10. Dk. Ecru (Sul-R:1128)
- 11. Duck Wing Blue (Sul-R:1250)
- 12. Blue Black (Sul-R:1182)

Christmas_stockings_02-5x7.dst

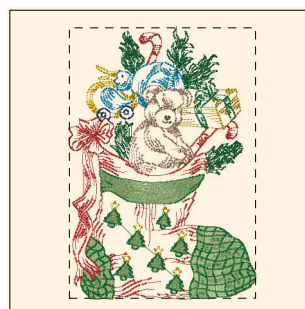
4.89x6.97 inches; 22,584 stitches
12 thread changes; 12 colors



- 1. Willow Green (Sul-R:1279)
- 2. Goldenrod (Sul-R:1024)
- 3. Poppy (Sul-R:1317)
- 4. Garden Green (Sul-R:569)
- 5. Xmas Green (Sul-R:1051)
- 6. Toast (Sul-R:1266)
- 7. Duck Wing Blue (Sul-R:1250)
- 8. Blue Black (Sul-R:1182)

Christmas_stockings_03-5x7.dst

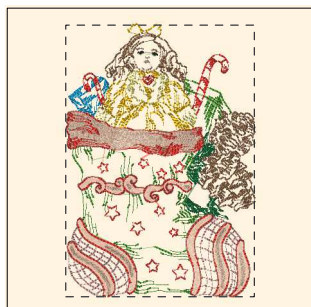
4.57x7.00 inches; 21,039 stitches
8 thread changes; 8 colors



- 1. Pistachio (Sul-R:1276)
- 2. Goldenrod (Sul-R:1024)
- 3. Sunflower Gold (Sul-R:1333)
- 4. Poppy (Sul-R:1317)
- 5. Xmas Green (Sul-R:1051)
- 6. Drab Green (Sul-R:1228)
- 7. Garden Green (Sul-R:569)
- 8. Dk. Ecru (Sul-R:1128)
- 9. Team Blue (Sul-R:1535)
- 10. Putty (Sul-R:1508)
- 11. Duck Wing Blue (Sul-R:1250)

Christmas_stockings_04-5x7.dst

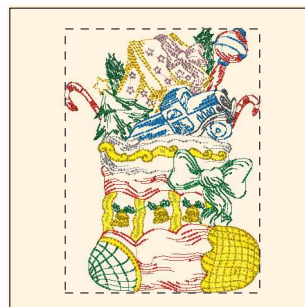
4.80x6.97 inches; 24,695 stitches
11 thread changes; 11 colors



- 1. Xmas Green (Sul-R:1051)
- 2. Grass Green (Sul-R:1049)
- 3. Lemon Yellow (Sul-R:1067)
- 4. Med. Dk. Ecru (Sul-R:1054)
- 5. Goldenrod (Sul-R:1024)
- 6. Toast (Sul-R:1266)
- 7. Duck Wing Blue (Sul-R:1250)
- 8. Taupe (Sul-R:1213)
- 9. Med. Dk. Ecru (Sul-R:1054)
- 10. Poppy (Sul-R:1317)
- 11. Pistachio (Sul-R:1276)
- 12. Blue Black (Sul-R:1182)

Christmas_stockings_05-5x7.dst

4.85x7.00 inches; 24,367 stitches
12 thread changes; 11 colors



- 1. Mimosa Yellow (Sul-R:1187)
- 2. Goldenrod (Sul-R:1024)
- 3. Poppy (Sul-R:1317)
- 4. Garden Green (Sul-R:569)
- 5. Xmas Green (Sul-R:1051)
- 6. Med. Dk. Khaki (Sul-R:1040)
- 7. (Sul-R:1290)
- 8. Steel Gray (Sul-R:1011)
- 9. Taupe (Sul-R:1213)
- 10. (Sul-R:1290)

Christmas_stockings_06-5x7.dst

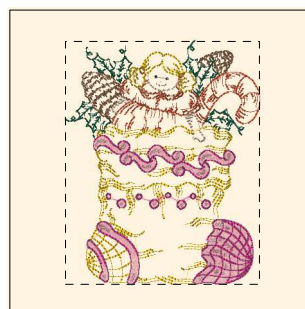
5.01x6.80 inches; 22,079 stitches
10 thread changes; 9 colors



- 1. Goldenrod (Sul-R:1024)
- 2. Toast (Sul-R:1266)
- 3. Mallard Green (Sul-R:1208)
- 4. Taupe (Sul-R:1213)
- 5. Maple (Sul-R:1021)
- 6. Team Blue (Sul-R:1535)
- 7. Med. Dk. Ecru (Sul-R:1054)
- 8. Blue Black (Sul-R:1182)

Christmas_stockings_07-5x7.dst

5.00x6.82 inches; 17,141 stitches
8 thread changes; 8 colors

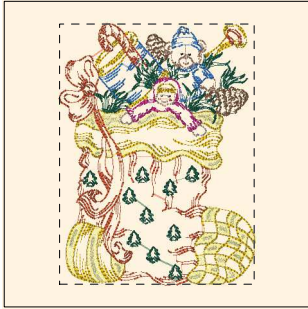


- 1. Mallard Green (Sul-R:1208)
- 2. Toast (Sul-R:1266)
- 3. Maple (Sul-R:1021)
- 4. Spark Gold (Sul-R:1083)
- 5. Taupe (Sul-R:1213)
- 6. Med. Rose (Sul-R:1231)
- 7. Deep Ecru (Sul-R:1149)
- 8. Blue Black (Sul-R:1182)

Christmas_stockings_08-5x7.dst

5.00x6.26 inches; 17,561 stitches
8 thread changes; 8 colors

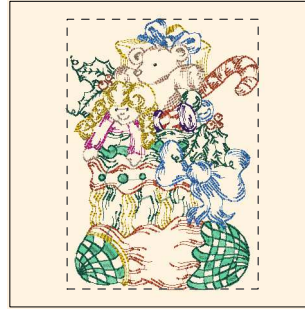
Printed 2/2/2014



- 1. Primrose (Sul-R:1066)
- 2. Spark Gold (Sul-R:1083)
- 3. Maple (Sul-R:1021)
- 4. Mallard Green (Sul-R:1208)
- 5. Toast (Sul-R:1266)
- 6. Dk. Ecreu (Sul-R:1128)
- 7. Med. Rose (Sul-R:1231)
- 8. Deep Ecreu (Sul-R:1149)
- 9. Royal Blue (Sul-R:1076)
- 10. Blue Black (Sul-R:1182)

Christmas_stockings_09-5x7.dst

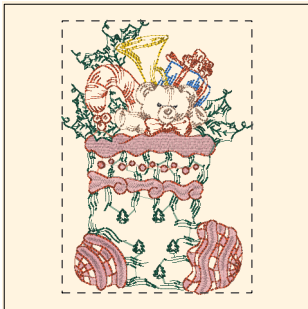
5.01x6.70 inches; 20,886 stitches
10 thread changes; 10 colors



- 1. Maple (Sul-R:1021)
- 2. Dk. Willow Green (Sul-R:1280)
- 3. Mallard Green (Sul-R:1208)
- 4. Spark Gold (Sul-R:1083)
- 5. Deep Eggplant (Sul-R:1301)
- 6. Dk. Ecreu (Sul-R:1128)
- 7. Med. Rose (Sul-R:1231)
- 8. Deep Ecreu (Sul-R:1149)
- 9. Royal Blue (Sul-R:1076)
- 10. Blue Black (Sul-R:1182)

Christmas_stockings_10-5x7.dst

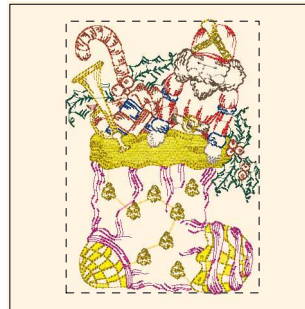
4.92x6.95 inches; 19,636 stitches
10 thread changes; 10 colors



- 1. Spark Gold (Sul-R:1083)
- 2. Dk. Ecreu (Sul-R:1128)
- 3. Royal Blue (Sul-R:1076)
- 4. Taupe (Sul-R:1213)
- 5. Mallard Green (Sul-R:1208)
- 6. Maple (Sul-R:1021)
- 7. Blue Black (Sul-R:1182)

Christmas_stockings_11-5x7.dst

4.89x7.00 inches; 20,150 stitches
7 thread changes; 7 colors



- 1. Mimosa Yellow (Sul-R:1187)
- 2. Spark Gold (Sul-R:1083)
- 3. Med. Rose (Sul-R:1231)
- 4. Mallard Green (Sul-R:1208)
- 5. Poppy (Sul-R:1317)
- 6. Maple (Sul-R:1021)
- 7. Toast (Sul-R:1266)
- 8. Team Blue (Sul-R:1535)
- 9. Deep Ecreu (Sul-R:1149)
- 10. Blue Black (Sul-R:1182)

Christmas_stockings_12-5x7.dst

4.97x7.00 inches; 23,046 stitches
10 thread changes; 10 colors