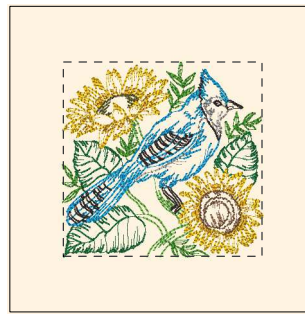


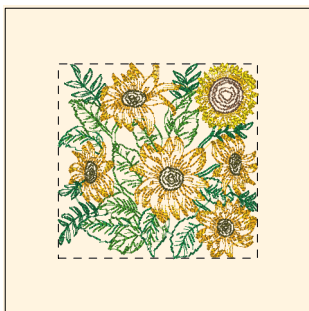
- 1. Toast (Sul-R:1266)
- 2. Drab Green (Sul-R:1228)
- 3. Grass Green (Sul-R:1049)
- 4. Garden Green (Sul-R:569)
- 5. Goldenrod (Sul-R:1024)
- 6. Sunflower Gold (Sul-R:1333)

**Sunflower\_galore\_01\_5x7.dst**  
5.17x5.00 inches; 19,557 stitches  
6 thread changes; 6 colors



- 1. Grass Green (Sul-R:1049)
- 2. Nile Green (Sul-R:1274)
- 3. Xmas Green (Sul-R:1051)
- 4. Sunflower Gold (Sul-R:1333)
- 5. Goldenrod (Sul-R:1024)
- 6. Drab Green (Sul-R:1228)
- 7. Toast (Sul-R:1266)
- 8. Steel Gray (Sul-R:1011)
- 9. Duck Wing Blue (Sul-R:1250)
- 10. Blackberry (Sul-R:1215)

**Sunflower\_galore\_02\_5x7.dst**  
5.12x5.00 inches; 16,469 stitches  
10 thread changes; 10 colors



- 1. Goldenrod (Sul-R:1024)
- 2. Mimosa Yellow (Sul-R:1187)
- 3. Sunflower Gold (Sul-R:1333)
- 4. Grass Green (Sul-R:1049)
- 5. Garden Green (Sul-R:569)
- 6. Xmas Green (Sul-R:1051)
- 7. Drab Green (Sul-R:1228)
- 8. Toast (Sul-R:1266)

**Sunflower\_galore\_03\_5x7.dst**  
5.13x5.00 inches; 21,813 stitches  
8 thread changes; 8 colors



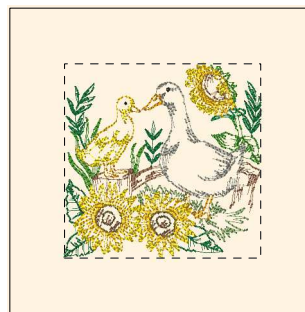
- 1. Goldenrod (Sul-R:1024)
- 2. Mimosa Yellow (Sul-R:1187)
- 3. Garden Green (Sul-R:569)
- 4. Drab Green (Sul-R:1228)
- 5. Toast (Sul-R:1266)
- 6. Dk. Ecru (Sul-R:1128)
- 7. Duck Wing Blue (Sul-R:1250)

**Sunflower\_galore\_04\_5x7.dst**  
5.10x5.00 inches; 22,808 stitches  
7 thread changes; 7 colors



- 1. Dk. Ecru (Sul-R:1128)
- 2. Nile Green (Sul-R:1274)
- 3. Garden Green (Sul-R:569)
- 4. Goldenrod (Sul-R:1024)
- 5. Mimosa Yellow (Sul-R:1187)
- 6. Toast (Sul-R:1266)
- 7. Drab Green (Sul-R:1228)

**Sunflower\_galore\_05\_5x7.dst**  
5.11x5.00 inches; 16,888 stitches  
7 thread changes; 7 colors



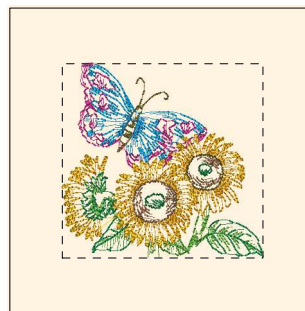
- 1. Xmas Green (Sul-R:1051)
- 2. Grass Green (Sul-R:1049)
- 3. Garden Green (Sul-R:569)
- 4. Drab Green (Sul-R:1228)
- 5. Toast (Sul-R:1266)
- 6. Pistachio (Sul-R:1276)
- 7. Putty (Sul-R:1508)
- 8. Goldenrod (Sul-R:1024)
- 9. Mimosa Yellow (Sul-R:1187)
- 10. Sunflower Gold (Sul-R:1333)
- 11. Blackberry (Sul-R:1215)

**Sunflower\_galore\_06\_5x7.dst**  
5.05x5.00 inches; 15,237 stitches  
11 thread changes; 11 colors



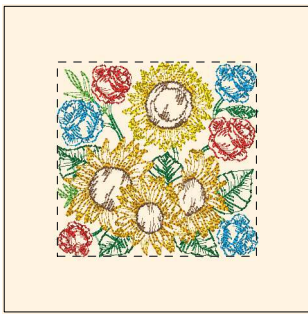
- 1. Grass Green (Sul-R:1049)
- 2. Xmas Green (Sul-R:1051)
- 3. Mimosa Yellow (Sul-R:1187)
- 4. Cinnamon (Sul-R:568)
- 5. Sunflower Gold (Sul-R:1333)
- 6. Poppy (Sul-R:1317)
- 7. Goldenrod (Sul-R:1024)
- 8. Duck Wing Blue (Sul-R:1250)
- 9. Peacock Blue (Sul-R:1134)
- 10. Drab Green (Sul-R:1228)
- 11. Toast (Sul-R:1266)

**Sunflower\_galore\_07\_5x7.dst**  
5.38x5.00 inches; 21,344 stitches  
11 thread changes; 11 colors



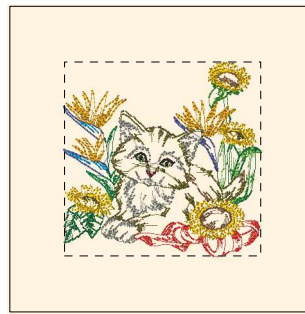
- 1. Goldenrod (Sul-R:1024)
- 2. Sunflower Gold (Sul-R:1333)
- 3. Grass Green (Sul-R:1049)
- 4. Nile Green (Sul-R:1274)
- 5. Garden Green (Sul-R:569)
- 6. Drab Green (Sul-R:1228)
- 7. Toast (Sul-R:1266)
- 8. Med. Rose (Sul-R:1231)
- 9. (Sul-R:1290)
- 10. Duck Wing Blue (Sul-R:1250)

**Sunflower\_galore\_08\_5x7.dst**  
5.17x5.00 inches; 15,566 stitches  
10 thread changes; 10 colors



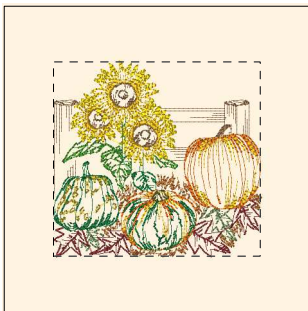
- 1. Nile Green (Sul-R:1274)
- 2. Garden Green (Sul-R:569)
- 3. Xmas Green (Sul-R:1051)
- 4. Goldenrod (Sul-R:1024)
- 5. Mimosa Yellow (Sul-R:1187)
- 6. Sunflower Gold (Sul-R:1333)
- 7. Toast (Sul-R:1266)
- 8. Duck Wing Blue (Sul-R:1250)
- 9. Poppy (Sul-R:1317)

**Sunflower\_galore\_09\_5x7.dst**  
5.13x5.00 inches; 20,472 stitches  
9 thread changes; 9 colors



- 1. Grass Green (Sul-R:1049)
- 2. Nile Green (Sul-R:1274)
- 3. Garden Green (Sul-R:569)
- 4. Xmas Green (Sul-R:1051)
- 5. Duck Wing Blue (Sul-R:1250)
- 6. Dusty Navy (Sul-R:1198)
- 7. Poppy (Sul-R:1317)
- 8. Goldenrod (Sul-R:1024)
- 9. Sunflower Gold (Sul-R:1333)
- 10. Drab Green (Sul-R:1228)
- 11. Toast (Sul-R:1266)
- 12. Putty (Sul-R:1508)
- 13. Blackberry (Sul-R:1215)
- 14. Deep Mauve (Sul-R:1237)

**Sunflower\_galore\_10\_5x7.dst**  
5.06x5.00 inches; 15,601 stitches  
14 thread changes; 14 colors



- 1. Grass Green (Sul-R:1049)
- 2. Toast (Sul-R:1266)
- 3. Tan (Sul-R:1126)
- 4. Goldenrod (Sul-R:1024)
- 5. Mimosa Yellow (Sul-R:1187)
- 6. Moss Green (Sul-R:630)
- 7. Garden Green (Sul-R:569)
- 8. Deep Mauve (Sul-R:1237)
- 9. Xmas Green (Sul-R:1051)
- 10. Cinnamon (Sul-R:568)
- 11. Drab Green (Sul-R:1228)
- 12. (Sul-R:1244)

**Sunflower\_galore\_11\_5x7.dst**  
5.33x5.00 inches; 17,717 stitches  
12 thread changes; 12 colors



- 1. Tan (Sul-R:1126)
- 2. Xmas Green (Sul-R:1051)
- 3. Sunflower Gold (Sul-R:1333)
- 4. Garden Green (Sul-R:569)
- 5. Nile Green (Sul-R:1274)
- 6. Poppy (Sul-R:1317)
- 7. Drab Green (Sul-R:1228)
- 8. Toast (Sul-R:1266)
- 9. Goldenrod (Sul-R:1024)
- 10. Mimosa Yellow (Sul-R:1187)
- 11. Duck Wing Blue (Sul-R:1250)
- 12. Blackberry (Sul-R:1215)

**Sunflower\_galore\_12\_5x7.dst**  
5.16x5.00 inches; 17,261 stitches  
12 thread changes; 12 colors