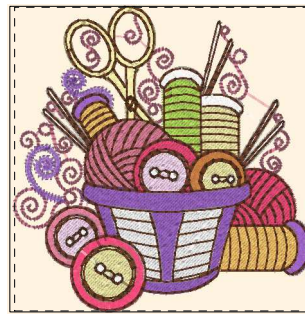


- 1. Dk. Willow Green (Sul-R:1280)
- 2. Primrose (Sul-R:1066)
- 3. Red Geranium (Sul-R:1188)
- 4. Med. Purple (Sul-R:1032)
- 5. Pastel Pink (Sul-R:1225)
- 6. Cornsilk (Sul-R:502)
- 7. Bright White (Sul-R:1001)
- 8. Tawny Brown (Sul-R:1058)

Curly_swirly_sewing_011_4x4#.dst
3.94x2.63 inches; 14,248 stitches
8 thread changes; 8 colors



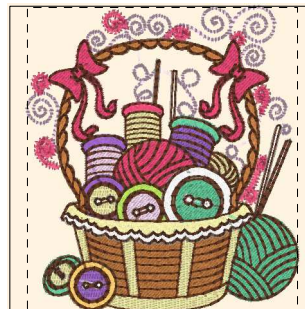
- 1. Dk. Mauve (Sul-R:1119)
- 2. Med. Purple (Sul-R:1032)
- 3. Deep Chartreuse (Sul-R:1332)
- 4. Cornsilk (Sul-R:502)
- 5. Red Geranium (Sul-R:1188)
- 6. Primrose (Sul-R:1066)
- 7. Pastel Pink (Sul-R:1225)
- 8. Bright White (Sul-R:1001)
- 9. Tan (Sul-R:1126)
- 10. Tawny Brown (Sul-R:1058)

Curly_swirly_sewing_012_4x4#.dst
3.81x3.91 inches; 19,926 stitches
10 thread changes; 10 colors



- 1. Cornsilk (Sul-R:502)
- 2. Primrose (Sul-R:1066)
- 3. Red Geranium (Sul-R:1188)
- 4. Bright White (Sul-R:1001)
- 5. Gray (Sul-R:1219)
- 6. Dk. Willow Green (Sul-R:1280)
- 7. Tawny Brown (Sul-R:1058)

Curly_swirly_sewing_01_4x4#.dst
3.94x3.44 inches; 22,063 stitches
7 thread changes; 7 colors



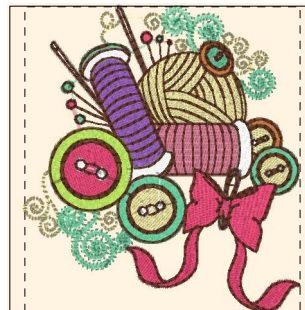
- 1. Pastel Pink (Sul-R:1225)
- 2. Red Geranium (Sul-R:1188)
- 3. Primrose (Sul-R:1066)
- 4. Dk. Willow Green (Sul-R:1280)
- 5. Med. Purple (Sul-R:1032)
- 6. Tan (Sul-R:1126)
- 7. Deep Chartreuse (Sul-R:1332)
- 8. Cornsilk (Sul-R:502)
- 9. Bright White (Sul-R:1001)
- 10. Tawny Brown (Sul-R:1058)

Curly_swirly_sewing_02_4x4#.dst
3.48x3.91 inches; 23,929 stitches
10 thread changes; 10 colors



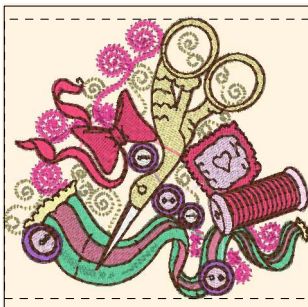
- 1. Pastel Pink (Sul-R:1225)
- 2. Red Geranium (Sul-R:1188)
- 3. Tan (Sul-R:1126)
- 4. Deep Chartreuse (Sul-R:1332)
- 5. Primrose (Sul-R:1066)
- 6. Med. Purple (Sul-R:1032)
- 7. Bright White (Sul-R:1001)
- 8. Tawny Brown (Sul-R:1058)

Curly_swirly_sewing_03_4x4#.dst
3.41x3.94 inches; 26,288 stitches
8 thread changes; 8 colors



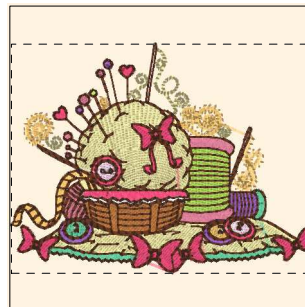
- 1. Primrose (Sul-R:1066)
- 2. Dk. Willow Green (Sul-R:1280)
- 3. Red Geranium (Sul-R:1188)
- 4. Dk. Mauve (Sul-R:1119)
- 5. Med. Purple (Sul-R:1032)
- 6. Tan (Sul-R:1126)
- 7. Deep Chartreuse (Sul-R:1332)
- 8. Bright White (Sul-R:1001)
- 9. Gray (Sul-R:1219)
- 10. Tawny Brown (Sul-R:1058)

Curly_swirly_sewing_04_4x4#.dst
3.55x3.92 inches; 17,896 stitches
10 thread changes; 10 colors



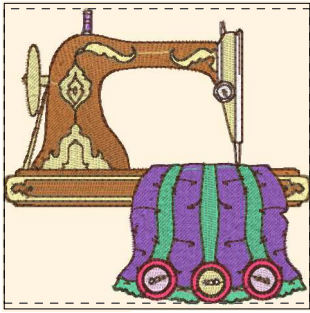
- 1. Primrose (Sul-R:1066)
- 2. Deep Rose (Sul-R:1511)
- 3. Red Geranium (Sul-R:1188)
- 4. Dk. Mauve (Sul-R:1119)
- 5. Dk. Willow Green (Sul-R:1280)
- 6. Pastel Pink (Sul-R:1225)
- 7. Bright White (Sul-R:1001)
- 8. Med. Purple (Sul-R:1032)
- 9. Tawny Brown (Sul-R:1058)

Curly_swirly_sewing_05_4x4#.dst
3.93x3.60 inches; 20,101 stitches
9 thread changes; 9 colors



- 1. Primrose (Sul-R:1066)
- 2. Cornsilk (Sul-R:502)
- 3. Tan (Sul-R:1126)
- 4. Deep Chartreuse (Sul-R:1332)
- 5. Red Geranium (Sul-R:1188)
- 6. Dk. Mauve (Sul-R:1119)
- 7. Dk. Willow Green (Sul-R:1280)
- 8. Med. Purple (Sul-R:1032)
- 9. Pastel Pink (Sul-R:1225)
- 10. Bright White (Sul-R:1001)
- 11. Tawny Brown (Sul-R:1058)

Curly_swirly_sewing_06_4x4#.dst
3.90x2.96 inches; 17,344 stitches
11 thread changes; 11 colors



- 1. Pastel Pink (Sul-R:1225)
- 2. Med. Purple (Sul-R:1032)
- 3. Tan (Sul-R:1126)
- 4. Dk. Willow Green (Sul-R:1280)
- 5. Red Geranium (Sul-R:1188)
- 6. Primrose (Sul-R:1066)
- 7. Bright White (Sul-R:1001)
- 8. Tawny Brown (Sul-R:1058)

Curly_swirly_sewing_07_4x4#.dst
3.94x3.79 inches; 18,358 stitches
8 thread changes; 8 colors



- 1. Red Geranium (Sul-R:1188)
- 2. Med. Purple (Sul-R:1032)
- 3. Tan (Sul-R:1126)
- 4. Bright White (Sul-R:1001)
- 5. Tawny Brown (Sul-R:1058)

Curly_swirly_sewing_08_4x4.dst
1.76x3.91 inches; 7,995 stitches
5 thread changes; 5 colors



- 1. Med. Purple (Sul-R:1032)
- 2. Pastel Pink (Sul-R:1225)
- 3. Bright White (Sul-R:1001)
- 4. Red Geranium (Sul-R:1188)
- 5. Primrose (Sul-R:1066)
- 6. Tawny Brown (Sul-R:1058)

Curly_swirly_sewing_09_4x4.dst
3.84x3.91 inches; 22,077 stitches
6 thread changes; 6 colors