



- 1. Butterfly Gold (Sul-R:567)
- 2. Pale Yellow (Sul-R:1061)
- 3. Bright White (Sul-R:1001)
- 4. Moss Green (Sul-R:630)
- 5. Chartreuse (Sul-R:1322)
- 6. Pastel Peach (Sul-R:1017)
- 7. Tawny Brown (Sul-R:1058)

Tea_love_01-5x7.exp
5.02x5.49 inches; 29,373 stitches
7 thread changes; 7 colors



- 1. Bright White (Sul-R:1001)
- 2. Butterfly Gold (Sul-R:567)
- 3. Pastel Peach (Sul-R:1017)
- 4. Pale Yellow (Sul-R:1061)
- 5. Moss Green (Sul-R:630)
- 6. Chartreuse (Sul-R:1322)
- 7. Tawny Brown (Sul-R:1058)

Tea_love_02-5x7.exp
5.02x6.69 inches; 28,972 stitches
7 thread changes; 7 colors



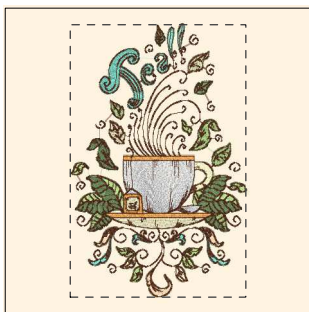
- 1. Bright White (Sul-R:1001)
- 2. Butterfly Gold (Sul-R:567)
- 3. Pale Yellow (Sul-R:1061)
- 4. Pastel Peach (Sul-R:1017)
- 5. Moss Green (Sul-R:630)
- 6. Chartreuse (Sul-R:1322)
- 7. Tawny Brown (Sul-R:1058)

Tea_love_03-5x7.exp
3.91x6.99 inches; 27,607 stitches
7 thread changes; 7 colors



- 1. Bright White (Sul-R:1001)
- 2. Teal (Sul-R:1046)
- 3. Peach (Sul-R:1019)
- 4. Butterfly Gold (Sul-R:567)
- 5. Pale Yellow (Sul-R:1061)
- 6. Pastel Peach (Sul-R:1017)
- 7. Moss Green (Sul-R:630)
- 8. Chartreuse (Sul-R:1322)
- 9. Tawny Brown (Sul-R:1058)

Tea_love_04-5x7.exp
4.59x7.03 inches; 33,938 stitches
9 thread changes; 9 colors



- 1. Bright White (Sul-R:1001)
- 2. Pale Yellow (Sul-R:1061)
- 3. Butterfly Gold (Sul-R:567)
- 4. Pastel Peach (Sul-R:1017)
- 5. Moss Green (Sul-R:630)
- 6. Chartreuse (Sul-R:1322)
- 7. Teal (Sul-R:1046)
- 8. Tawny Brown (Sul-R:1058)

Tea_love_05-5x7.exp
4.52x7.02 inches; 28,274 stitches
8 thread changes; 8 colors



- 1. Butterfly Gold (Sul-R:567)
- 2. Bright White (Sul-R:1001)
- 3. Pale Yellow (Sul-R:1061)
- 4. Peach (Sul-R:1019)
- 5. Moss Green (Sul-R:630)
- 6. Chartreuse (Sul-R:1322)
- 7. Tawny Brown (Sul-R:1058)

Tea_love_06-5x7.exp
4.79x6.99 inches; 35,069 stitches
7 thread changes; 7 colors



- 1. Bright White (Sul-R:1001)
- 2. Butterfly Gold (Sul-R:567)
- 3. Pale Yellow (Sul-R:1061)
- 4. Peach (Sul-R:1019)
- 5. Teal (Sul-R:1046)
- 6. Pastel Peach (Sul-R:1017)
- 7. Moss Green (Sul-R:630)
- 8. Chartreuse (Sul-R:1322)
- 9. Tawny Brown (Sul-R:1058)

Tea_love_07-5x7.exp
5.02x5.43 inches; 32,555 stitches
9 thread changes; 9 colors



- 1. Teal (Sul-R:1046)
- 2. Pale Yellow (Sul-R:1061)
- 3. Butterfly Gold (Sul-R:567)
- 4. Bright White (Sul-R:1001)
- 5. Peach (Sul-R:1019)
- 6. Pastel Peach (Sul-R:1017)
- 7. Moss Green (Sul-R:630)
- 8. Chartreuse (Sul-R:1322)
- 9. Tawny Brown (Sul-R:1058)

Tea_love_08-5x7.exp
5.04x6.89 inches; 37,596 stitches
9 thread changes; 9 colors



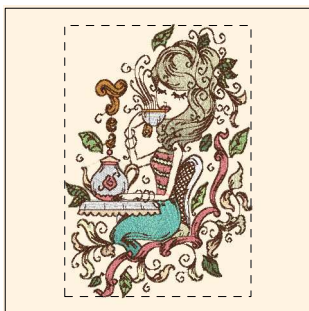
- 1. Bright White (Sul-R:1001)
- 2. Pale Yellow (Sul-R:1061)
- 3. Butterfly Gold (Sul-R:567)
- 4. Peach (Sul-R:1019)
- 5. Pastel Peach (Sul-R:1017)
- 6. Moss Green (Sul-R:630)
- 7. Chartreuse (Sul-R:1322)
- 8. Tawny Brown (Sul-R:1058)

Tea_love_09-5x7.exp
5.02x5.43 inches; 27,028 stitches
8 thread changes; 8 colors



- 1. Bright White (Sul-R:1001)
- 2. Butterfly Gold (Sul-R:567)
- 3. Pale Yellow (Sul-R:1061)
- 4. Teal (Sul-R:1046)
- 5. Moss Green (Sul-R:630)
- 6. Chartreuse (Sul-R:1322)
- 7. Tawny Brown (Sul-R:1058)

Tea_love_10-5x7.exp
5.03x5.59 inches; 31,530 stitches
7 thread changes; 7 colors



- 1. Pastel Peach (Sul-R:1017)
- 2. Bright White (Sul-R:1001)
- 3. Peach (Sul-R:1019)
- 4. Pale Yellow (Sul-R:1061)
- 5. Teal (Sul-R:1046)
- 6. Butterfly Gold (Sul-R:567)
- 7. Moss Green (Sul-R:630)
- 8. Chartreuse (Sul-R:1322)
- 9. Tawny Brown (Sul-R:1058)

Tea_love_11-5x7.exp
4.80x6.98 inches; 40,073 stitches
9 thread changes; 9 colors



- 1. Bright White (Sul-R:1001)
- 2. Butterfly Gold (Sul-R:567)
- 3. Pale Yellow (Sul-R:1061)
- 4. Pastel Peach (Sul-R:1017)
- 5. Moss Green (Sul-R:630)
- 6. Chartreuse (Sul-R:1322)
- 7. Tawny Brown (Sul-R:1058)

Tea_love_12-5x7.exp
5.00x5.97 inches; 30,774 stitches
7 thread changes; 7 colors