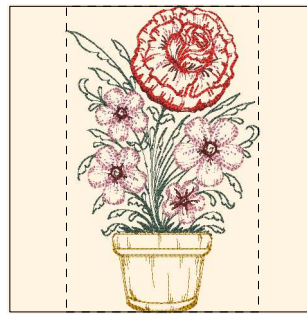


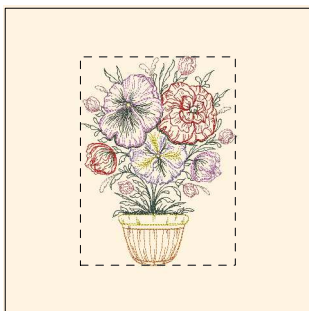
- 1. Dk. French Green (Sul-R:1286)
- 2. Wine (Sul-R:1312)
- 3. Pale Peach (Sul-R:1064)
- 4. Pastel Coral (Sul-R:1016)
- 5. Poppy (Sul-R:1317)
- 6. Mine Gold (Sul-R:1025)
- 7. Wine (Sul-R:1312)

**Timeless\_spring\_planters\_01-6x10.dst**  
6.00x9.52 inches; 22,429 stitches  
7 thread changes; 6 colors



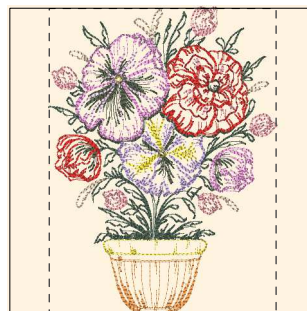
- 1. Dk. French Green (Sul-R:1286)
- 2. Wine (Sul-R:1312)
- 3. Pale Peach (Sul-R:1064)
- 4. Pastel Coral (Sul-R:1016)
- 5. Poppy (Sul-R:1317)
- 6. Mine Gold (Sul-R:1025)
- 7. Wine (Sul-R:1312)

**Timeless\_spring\_planters\_01-8x8.dst**  
4.95x7.87 inches; 19,223 stitches  
7 thread changes; 6 colors



- 1. Dk. French Green (Sul-R:1286)
- 2. Rust (Sul-R:1181)
- 3. Hedge Green (Sul-R:1272)
- 4. Sun Yellow (Sul-R:1124)
- 5. Pastel Coral (Sul-R:1016)
- 6. Deep Ecu (Sul-R:1149)
- 7. Poppy (Sul-R:1317)
- 8. Pink (Sul-R:1121)
- 9. Lavender (Sul-R:1193)
- 10. Bright Pink (Sul-R:1224)
- 11. Apricot (Sul-R:1239)

**Timeless\_spring\_planters\_02-6x10.dst**  
5.99x8.05 inches; 24,879 stitches  
11 thread changes; 11 colors



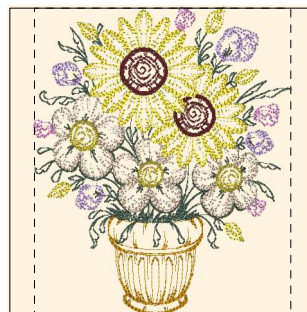
- 1. Dk. French Green (Sul-R:1286)
- 2. Rust (Sul-R:1181)
- 3. Hedge Green (Sul-R:1272)
- 4. Sun Yellow (Sul-R:1124)
- 5. Pastel Coral (Sul-R:1016)
- 6. Deep Ecu (Sul-R:1149)
- 7. Poppy (Sul-R:1317)
- 8. Pink (Sul-R:1121)
- 9. Lavender (Sul-R:1193)
- 10. Bright Pink (Sul-R:1224)
- 11. Apricot (Sul-R:1239)

**Timeless\_spring\_planters\_02-8x8.dst**  
5.85x7.85 inches; 24,472 stitches  
11 thread changes; 11 colors



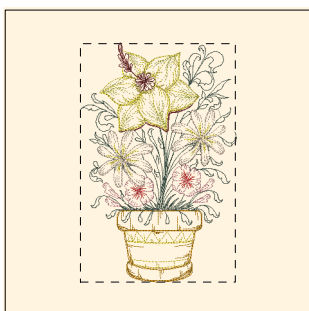
- 1. Mine Gold (Sul-R:1025)
- 2. Dk. French Green (Sul-R:1286)
- 3. Hedge Green (Sul-R:1272)
- 4. Whisper Gray (Sul-R:1325)
- 5. Deep Ecu (Sul-R:1149)
- 6. Lemon Yellow (Sul-R:1067)
- 7. Sun Yellow (Sul-R:1124)
- 8. Lavender (Sul-R:1193)
- 9. Bright Pink (Sul-R:1224)
- 10. Wine (Sul-R:1312)

**Timeless\_spring\_planters\_03-6x10.dst**  
6.00x7.14 inches; 29,542 stitches  
10 thread changes; 10 colors



- 1. Mine Gold (Sul-R:1025)
- 2. Dk. French Green (Sul-R:1286)
- 3. Hedge Green (Sul-R:1272)
- 4. Whisper Gray (Sul-R:1325)
- 5. Deep Ecu (Sul-R:1149)
- 6. Lemon Yellow (Sul-R:1067)
- 7. Sun Yellow (Sul-R:1124)
- 8. Lavender (Sul-R:1193)
- 9. Bright Pink (Sul-R:1224)
- 10. Wine (Sul-R:1312)

**Timeless\_spring\_planters\_03-8x8.dst**  
6.61x7.87 inches; 32,142 stitches  
10 thread changes; 10 colors



- 1. Sun Yellow (Sul-R:1124)
- 2. Mine Gold (Sul-R:1025)
- 3. Dk. French Green (Sul-R:1286)
- 4. Wine (Sul-R:1312)
- 5. Lemon Yellow (Sul-R:1067)
- 6. Sun Yellow (Sul-R:1124)
- 7. Hedge Green (Sul-R:1272)
- 8. Poppy (Sul-R:1317)
- 9. Pastel Coral (Sul-R:1016)
- 10. Deep Ecu (Sul-R:1149)
- 11. Wine (Sul-R:1312)

**Timeless\_spring\_planters\_04-6x10.dst**  
5.99x9.20 inches; 23,655 stitches  
11 thread changes; 9 colors



- 1. Sun Yellow (Sul-R:1124)
- 2. Mine Gold (Sul-R:1025)
- 3. Dk. French Green (Sul-R:1286)
- 4. Wine (Sul-R:1312)
- 5. Lemon Yellow (Sul-R:1067)
- 6. Sun Yellow (Sul-R:1124)
- 7. Hedge Green (Sul-R:1272)
- 8. Poppy (Sul-R:1317)
- 9. Pastel Coral (Sul-R:1016)
- 10. Deep Ecu (Sul-R:1149)
- 11. Wine (Sul-R:1312)

**Timeless\_spring\_planters\_04-8x8.dst**  
5.11x7.86 inches; 20,829 stitches  
11 thread changes; 9 colors



- 1. Dk. French Green (Sul-R:1286)
- 2. Wine (Sul-R:1312)
- 3. Hedge Green (Sul-R:1272)
- 4. Pastel Coral (Sul-R:1016)
- 5. Poppy (Sul-R:1317)
- 6. Deep Ecru (Sul-R:1149)
- 7. Sun Yellow (Sul-R:1124)
- 8. Lavender (Sul-R:1193)
- 9. Bright Pink (Sul-R:1224)

**Timeless\_spring\_planters\_05-6x10.dst**

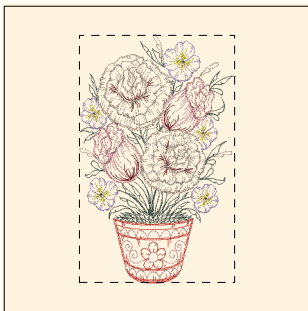
5.99x6.85 inches; 29,835 stitches  
9 thread changes; 9 colors



- 1. Dk. French Green (Sul-R:1286)
- 2. Wine (Sul-R:1312)
- 3. Hedge Green (Sul-R:1272)
- 4. Pastel Coral (Sul-R:1016)
- 5. Poppy (Sul-R:1317)
- 6. Deep Ecru (Sul-R:1149)
- 7. Sun Yellow (Sul-R:1124)
- 8. Lavender (Sul-R:1193)
- 9. Bright Pink (Sul-R:1224)

**Timeless\_spring\_planters\_05-8x8.dst**

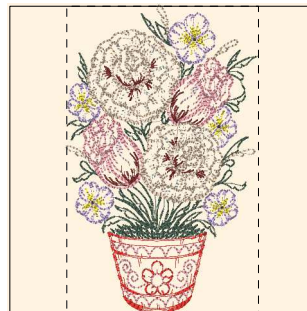
6.88x7.87 inches; 33,079 stitches  
9 thread changes; 9 colors



- 1. Wine (Sul-R:1312)
- 2. Dk. French Green (Sul-R:1286)
- 3. Pale Peach (Sul-R:1064)
- 4. Poppy (Sul-R:1317)
- 5. Sun Yellow (Sul-R:1124)
- 6. Pastel Coral (Sul-R:1016)
- 7. Whisper Gray (Sul-R:1325)
- 8. Deep Ecru (Sul-R:1149)
- 9. Lavender (Sul-R:1193)
- 10. Hedge Green (Sul-R:1272)

**Timeless\_spring\_planters\_06-6x10.dst**

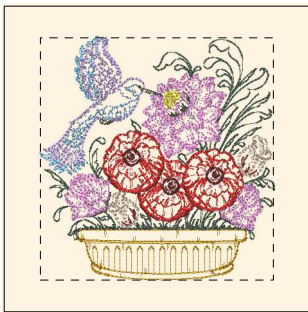
5.99x9.54 inches; 27,774 stitches  
10 thread changes; 10 colors



- 1. Wine (Sul-R:1312)
- 2. Dk. French Green (Sul-R:1286)
- 3. Pale Peach (Sul-R:1064)
- 4. Poppy (Sul-R:1317)
- 5. Sun Yellow (Sul-R:1124)
- 6. Pastel Coral (Sul-R:1016)
- 7. Whisper Gray (Sul-R:1325)
- 8. Deep Ecru (Sul-R:1149)
- 9. Lavender (Sul-R:1193)
- 10. Hedge Green (Sul-R:1272)

**Timeless\_spring\_planters\_06-8x8.dst**

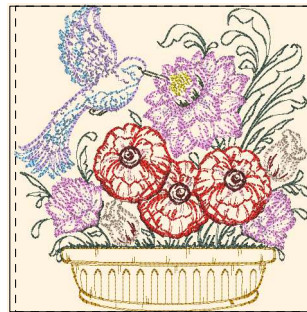
4.94x7.86 inches; 23,830 stitches  
10 thread changes; 10 colors



- 1. Mine Gold (Sul-R:1025)
- 2. Dk. French Green (Sul-R:1286)
- 3. Hedge Green (Sul-R:1272)
- 4. Wine (Sul-R:1312)
- 5. Poppy (Sul-R:1317)
- 6. Deep Ecru (Sul-R:1149)
- 7. Pastel Coral (Sul-R:1016)
- 8. Pink (Sul-R:1121)
- 9. Cornflower Blue (Sul-R:1249)
- 10. Lavender (Sul-R:1193)
- 11. Bright Pink (Sul-R:1224)
- 12. Sun Yellow (Sul-R:1124)
- 13. Wine (Sul-R:1312)

**Timeless\_spring\_planters\_07-6x10.dst**

6.00x6.24 inches; 28,214 stitches  
13 thread changes; 12 colors



- 1. Mine Gold (Sul-R:1025)
- 2. Dk. French Green (Sul-R:1286)
- 3. Hedge Green (Sul-R:1272)
- 4. Wine (Sul-R:1312)
- 5. Poppy (Sul-R:1317)
- 6. Deep Ecru (Sul-R:1149)
- 7. Pastel Coral (Sul-R:1016)
- 8. Pink (Sul-R:1121)
- 9. Cornflower Blue (Sul-R:1249)
- 10. Lavender (Sul-R:1193)
- 11. Bright Pink (Sul-R:1224)
- 12. Sun Yellow (Sul-R:1124)
- 13. Wine (Sul-R:1312)

**Timeless\_spring\_planters\_07-8x8.dst**

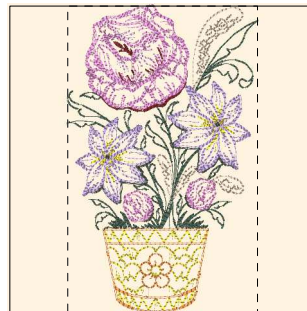
7.57x7.87 inches; 34,159 stitches  
13 thread changes; 12 colors



- 1. Sun Yellow (Sul-R:1124)
- 2. Dk. French Green (Sul-R:1286)
- 3. Deep Ecru (Sul-R:1149)
- 4. Wine (Sul-R:1312)
- 5. Hedge Green (Sul-R:1272)
- 6. Apricot (Sul-R:1239)
- 7. Lavender (Sul-R:1193)
- 8. Pastel Orchid (Sul-R:1111)
- 9. Pink (Sul-R:1121)
- 10. Bright Pink (Sul-R:1224)
- 11. Hedge Green (Sul-R:1272)

**Timeless\_spring\_planters\_08-6x10.dst**

6.00x9.65 inches; 24,491 stitches  
11 thread changes; 10 colors



- 1. Sun Yellow (Sul-R:1124)
- 2. Dk. French Green (Sul-R:1286)
- 3. Deep Ecru (Sul-R:1149)
- 4. Wine (Sul-R:1312)
- 5. Hedge Green (Sul-R:1272)
- 6. Apricot (Sul-R:1239)
- 7. Lavender (Sul-R:1193)
- 8. Pastel Orchid (Sul-R:1111)
- 9. Pink (Sul-R:1121)
- 10. Bright Pink (Sul-R:1224)
- 11. Hedge Green (Sul-R:1272)

**Timeless\_spring\_planters\_08-8x8.dst**

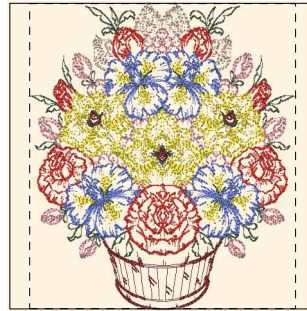
4.89x7.87 inches; 20,791 stitches  
11 thread changes; 10 colors



- 1. Wine (Sul-R:1312)
- 2. Hedge Green (Sul-R:1272)
- 3. Dk. French Green (Sul-R:1286)
- 4. Deep Ecru (Sul-R:1149)
- 5. Pastel Coral (Sul-R:1016)
- 6. Poppy (Sul-R:1317)
- 7. Lemon Yellow (Sul-R:1067)
- 8. Sun Yellow (Sul-R:1124)
- 9. Dk. Periwinkle (Sul-R:1226)

**Timeless\_spring\_planters\_09-6x10.dst**

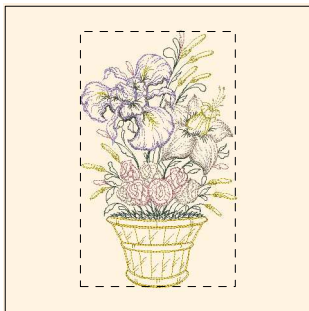
5.99x6.88 inches; 34,710 stitches  
9 thread changes; 9 colors



- 1. Wine (Sul-R:1312)
- 2. Hedge Green (Sul-R:1272)
- 3. Dk. French Green (Sul-R:1286)
- 4. Deep Ecru (Sul-R:1149)
- 5. Pastel Coral (Sul-R:1016)
- 6. Poppy (Sul-R:1317)
- 7. Lemon Yellow (Sul-R:1067)
- 8. Sun Yellow (Sul-R:1124)
- 9. Dk. Periwinkle (Sul-R:1226)

**Timeless\_spring\_planters\_09-8x8.dst**

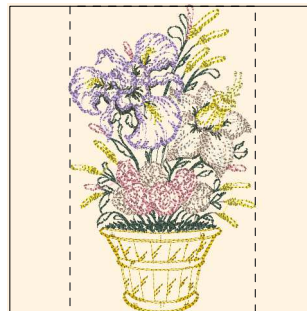
6.85x7.85 inches; 38,377 stitches  
9 thread changes; 9 colors



- 1. (Sul-R:1334)
- 2. Dk. French Green (Sul-R:1286)
- 3. Hedge Green (Sul-R:1272)
- 4. Sun Yellow (Sul-R:1124)
- 5. Lemon Yellow (Sul-R:1067)
- 6. Whisper Gray (Sul-R:1325)
- 7. Deep Ecru (Sul-R:1149)
- 8. Pastel Coral (Sul-R:1016)
- 9. Pastel Orchid (Sul-R:1111)
- 10. Lavender (Sul-R:1193)

**Timeless\_spring\_planters\_10-6x10.dst**

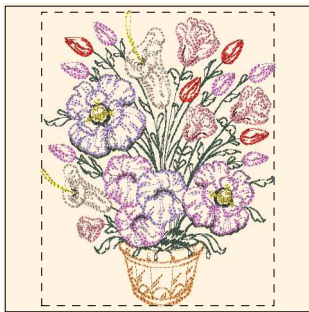
5.99x9.85 inches; 27,390 stitches  
10 thread changes; 10 colors



- 1. (Sul-R:1334)
- 2. Dk. French Green (Sul-R:1286)
- 3. Hedge Green (Sul-R:1272)
- 4. Sun Yellow (Sul-R:1124)
- 5. Lemon Yellow (Sul-R:1067)
- 6. Whisper Gray (Sul-R:1325)
- 7. Deep Ecru (Sul-R:1149)
- 8. Pastel Coral (Sul-R:1016)
- 9. Pastel Orchid (Sul-R:1111)
- 10. Lavender (Sul-R:1193)

**Timeless\_spring\_planters\_10-8x8.dst**

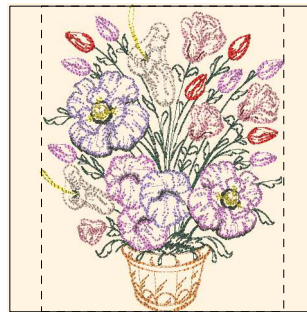
4.78x7.86 inches; 22,844 stitches  
10 thread changes; 10 colors



- 1. Apricot (Sul-R:1239)
- 2. Dk. French Green (Sul-R:1286)
- 3. Wine (Sul-R:1312)
- 4. Hedge Green (Sul-R:1272)
- 5. Whisper Gray (Sul-R:1325)
- 6. Deep Ecru (Sul-R:1149)
- 7. Pastel Coral (Sul-R:1016)
- 8. Poppy (Sul-R:1317)
- 9. Pastel Orchid (Sul-R:1111)
- 10. Pink (Sul-R:1121)
- 11. Bright Pink (Sul-R:1224)
- 12. Lavender (Sul-R:1193)
- 13. Sun Yellow (Sul-R:1124)

**Timeless\_spring\_planters\_11-6x10.dst**

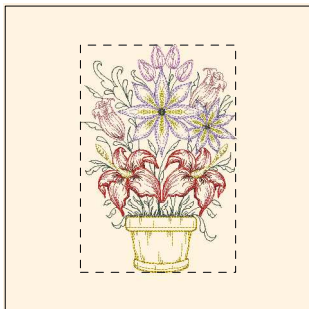
5.99x7.56 inches; 26,626 stitches  
13 thread changes; 13 colors



- 1. Apricot (Sul-R:1239)
- 2. Dk. French Green (Sul-R:1286)
- 3. Wine (Sul-R:1312)
- 4. Hedge Green (Sul-R:1272)
- 5. Whisper Gray (Sul-R:1325)
- 6. Deep Ecru (Sul-R:1149)
- 7. Pastel Coral (Sul-R:1016)
- 8. Poppy (Sul-R:1317)
- 9. Pastel Orchid (Sul-R:1111)
- 10. Pink (Sul-R:1121)
- 11. Bright Pink (Sul-R:1224)
- 12. Lavender (Sul-R:1193)
- 13. Sun Yellow (Sul-R:1124)

**Timeless\_spring\_planters\_11-8x8.dst**

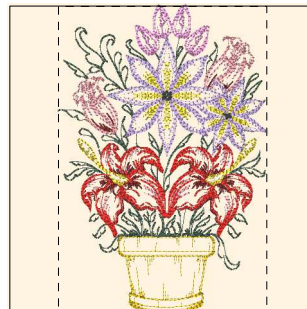
6.24x7.87 inches; 27,406 stitches  
13 thread changes; 13 colors



- 1. (Sul-R:1334)
- 2. Wine (Sul-R:1312)
- 3. Dk. French Green (Sul-R:1286)
- 4. Pastel Coral (Sul-R:1016)
- 5. Poppy (Sul-R:1317)
- 6. Sun Yellow (Sul-R:1124)
- 7. Bright Pink (Sul-R:1224)
- 8. Pastel Orchid (Sul-R:1111)
- 9. Lavender (Sul-R:1193)
- 10. Hedge Green (Sul-R:1272)

**Timeless\_spring\_planters\_12-6x10.dst**

6.00x8.78 inches; 30,468 stitches  
10 thread changes; 10 colors



- 1. (Sul-R:1334)
- 2. Wine (Sul-R:1312)
- 3. Dk. French Green (Sul-R:1286)
- 4. Pastel Coral (Sul-R:1016)
- 5. Poppy (Sul-R:1317)
- 6. Sun Yellow (Sul-R:1124)
- 7. Bright Pink (Sul-R:1224)
- 8. Pastel Orchid (Sul-R:1111)
- 9. Lavender (Sul-R:1193)
- 10. Hedge Green (Sul-R:1272)

**Timeless\_spring\_planters\_12-8x8.dst**

5.37x7.86 inches; 27,834 stitches  
10 thread changes; 10 colors