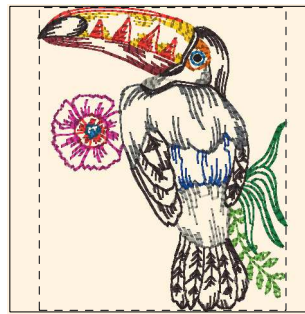




- 1. Grass Green (Sul-R:1049)
- 2. Xmas Green (Sul-R:1051)
- 3. (Sul-R:1290)
- 4. Goldenrod (Sul-R:1024)
- 5. Sunflower Gold (Sul-R:1333)
- 6. Poppy (Sul-R:1317)
- 7. Rust (Sul-R:1181)
- 8. Fuchsia (Sul-R:1192)
- 9. Team Blue (Sul-R:1535)
- 10. Blackberry (Sul-R:1215)

**Toucans\_flowers\_01-4x4.dst**  
 3.90x3.90 inches; 8,833 stitches  
 10 thread changes; 10 colors



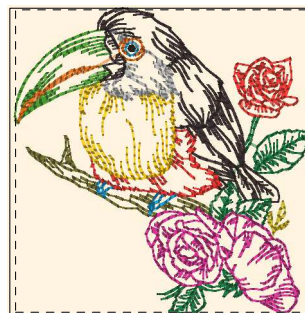
- 1. Goldenrod (Sul-R:1024)
- 2. Poppy (Sul-R:1317)
- 3. Deep Mauve (Sul-R:1237)
- 4. Nile Green (Sul-R:1274)
- 5. Xmas Green (Sul-R:1051)
- 6. Med. Dk. Khaki (Sul-R:1040)
- 7. Med. Rose (Sul-R:1231)
- 8. Team Blue (Sul-R:1535)
- 9. Putty (Sul-R:1508)
- 10. Cinnamon (Sul-R:568)
- 11. (Sul-R:1290)
- 12. Blackberry (Sul-R:1215)

**Toucans\_flowers\_02-4x4.dst**  
 3.18x3.90 inches; 7,452 stitches  
 12 thread changes; 12 colors



- 1. Sunflower Gold (Sul-R:1333)
- 2. Garden Green (Sul-R:569)
- 3. Goldenrod (Sul-R:1024)
- 4. (Sul-R:1244)
- 5. Poppy (Sul-R:1317)
- 6. Deep Mauve (Sul-R:1237)
- 7. Grass Green (Sul-R:1049)
- 8. Nile Green (Sul-R:1274)
- 9. Xmas Green (Sul-R:1051)
- 10. Med. Dk. Khaki (Sul-R:1040)
- 11. Fuchsia (Sul-R:1192)
- 12. Med. Rose (Sul-R:1231)
- 13. (Sul-R:1290)
- 14. Duck Wing Blue (Sul-R:1250)
- 15. Blackberry (Sul-R:1215)

**Toucans\_flowers\_03-4x4.dst**  
 3.38x3.90 inches; 9,068 stitches  
 15 thread changes; 15 colors



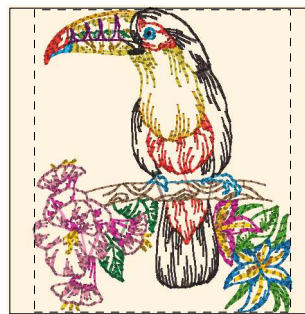
- 1. Drab Green (Sul-R:1228)
- 2. Grass Green (Sul-R:1049)
- 3. Xmas Green (Sul-R:1051)
- 4. Poppy (Sul-R:1317)
- 5. Goldenrod (Sul-R:1024)
- 6. (Sul-R:1244)
- 7. Duck Wing Blue (Sul-R:1250)
- 8. Med. Rose (Sul-R:1231)
- 9. Steel Gray (Sul-R:1011)
- 10. Cinnamon (Sul-R:568)
- 11. Blackberry (Sul-R:1215)

**Toucans\_flowers\_04-4x4.dst**  
 3.78x3.90 inches; 8,908 stitches  
 11 thread changes; 11 colors



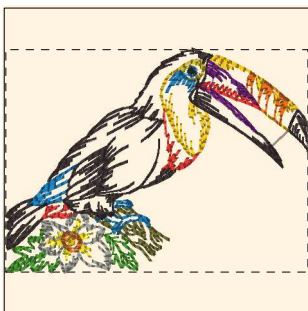
- 1. Sunflower Gold (Sul-R:1333)
- 2. Poppy (Sul-R:1317)
- 3. Grass Green (Sul-R:1049)
- 4. Nile Green (Sul-R:1274)
- 5. Xmas Green (Sul-R:1051)
- 6. Goldenrod (Sul-R:1024)
- 7. Nutmeg (Sul-R:521)
- 8. Deep Chartreuse (Sul-R:1332)
- 9. Fuchsia (Sul-R:1192)
- 10. Med. Rose (Sul-R:1231)
- 11. Team Blue (Sul-R:1535)
- 12. (Sul-R:1290)
- 13. Blackberry (Sul-R:1215)

**Toucans\_flowers\_05-4x4.dst**  
 3.62x3.90 inches; 11,658 stitches  
 13 thread changes; 13 colors



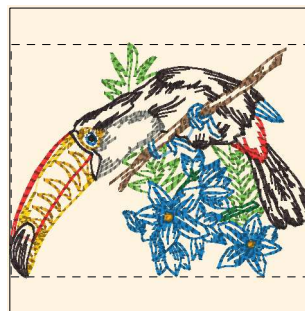
- 1. Grass Green (Sul-R:1049)
- 2. Garden Green (Sul-R:569)
- 3. Xmas Green (Sul-R:1051)
- 4. (Sul-R:1244)
- 5. Sunflower Gold (Sul-R:1333)
- 6. Poppy (Sul-R:1317)
- 7. Tan (Sul-R:1126)
- 8. Toast (Sul-R:1266)
- 9. Fuchsia (Sul-R:1192)
- 10. Med. Rose (Sul-R:1231)
- 11. Goldenrod (Sul-R:1024)
- 12. Dk. Mauve (Sul-R:1119)
- 13. (Sul-R:1290)
- 14. Duck Wing Blue (Sul-R:1250)
- 15. Blackberry (Sul-R:1215)

**Toucans\_flowers\_06-4x4.dst**  
 3.30x3.90 inches; 9,273 stitches  
 15 thread changes; 15 colors



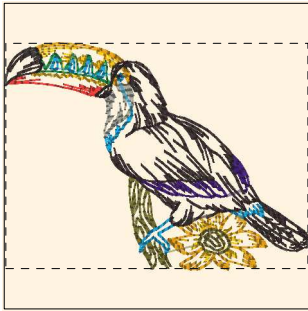
- 1. Grass Green (Sul-R:1049)
- 2. Goldenrod (Sul-R:1024)
- 3. Mimosa Yellow (Sul-R:1187)
- 4. (Sul-R:1244)
- 5. Cinnamon (Sul-R:568)
- 6. Poppy (Sul-R:1317)
- 7. Drab Green (Sul-R:1228)
- 8. Deep Orchid (Sul-R:1255)
- 9. Putty (Sul-R:1508)
- 10. (Sul-R:1290)
- 11. Blackberry (Sul-R:1215)

**Toucans\_flowers\_07-4x4.dst**  
 3.90x2.87 inches; 6,042 stitches  
 11 thread changes; 11 colors



- 1. Nile Green (Sul-R:1274)
- 2. Xmas Green (Sul-R:1051)
- 3. Goldenrod (Sul-R:1024)
- 4. Sunflower Gold (Sul-R:1333)
- 5. Poppy (Sul-R:1317)
- 6. Toast (Sul-R:1266)
- 7. Putty (Sul-R:1508)
- 8. (Sul-R:1290)
- 9. Blackberry (Sul-R:1215)

**Toucans\_flowers\_08-4x4.dst**  
 3.90x3.00 inches; 8,339 stitches  
 9 thread changes; 9 colors



- 1. Garden Green (Sul-R:569)
- 2. Goldenrod (Sul-R:1024)
- 3. Sunflower Gold (Sul-R:1333)
- 4. Poppy (Sul-R:1317)
- 5. Drab Green (Sul-R:1228)
- 6. Deep Eggplant (Sul-R:1301)
- 7. Putty (Sul-R:1508)
- 8. Duck Wing Blue (Sul-R:1250)
- 9. Blackberry (Sul-R:1215)

**Toucans\_flowers\_09-4x4.dst**  
 3.90x2.90 inches; 5,277 stitches  
 9 thread changes; 9 colors



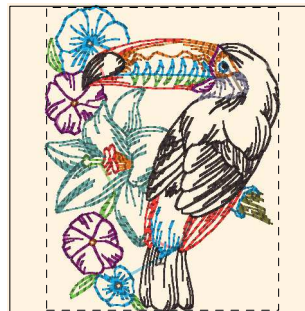
- 1. Grass Green (Sul-R:1049)
- 2. Xmas Green (Sul-R:1051)
- 3. (Sul-R:1244)
- 4. Yellow Orange (Sul-R:1137)
- 5. Sunflower Gold (Sul-R:1333)
- 6. Poppy (Sul-R:1317)
- 7. Deep Chartreuse (Sul-R:1332)
- 8. French Green (Sul-R:1287)
- 9. Duck Wing Blue (Sul-R:1250)
- 10. Blackberry (Sul-R:1215)

**Toucans\_flowers\_10-4x4.dst**  
 2.91x3.90 inches; 7,583 stitches  
 10 thread changes; 10 colors



- 1. Grass Green (Sul-R:1049)
- 2. Nile Green (Sul-R:1274)
- 3. Xmas Green (Sul-R:1051)
- 4. Goldenrod (Sul-R:1024)
- 5. Mimosa Yellow (Sul-R:1187)
- 6. Cinnamon (Sul-R:568)
- 7. Poppy (Sul-R:1317)
- 8. Deep Orchid (Sul-R:1255)
- 9. Med. Rose (Sul-R:1231)
- 10. Putty (Sul-R:1508)
- 11. Duck Wing Blue (Sul-R:1250)
- 12. Blackberry (Sul-R:1215)

**Toucans\_flowers\_11-4x4.dst**  
 3.62x3.89 inches; 12,157 stitches  
 12 thread changes; 12 colors



- 1. Cinnamon (Sul-R:568)
- 2. Poppy (Sul-R:1317)
- 3. Nile Green (Sul-R:1274)
- 4. Drab Green (Sul-R:1228)
- 5. Fuchsia (Sul-R:1192)
- 6. Med. Aqua (Sul-R:640)
- 7. Sterling (Sul-R:1295)
- 8. (Sul-R:1290)
- 9. Duck Wing Blue (Sul-R:1250)
- 10. Blackberry (Sul-R:1215)

**Toucans\_flowers\_12-4x4.dst**  
 2.99x3.90 inches; 7,786 stitches  
 10 thread changes; 10 colors