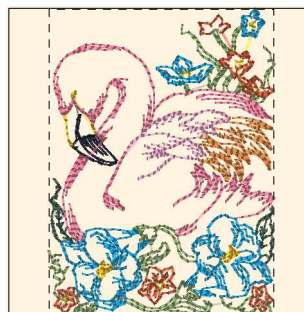


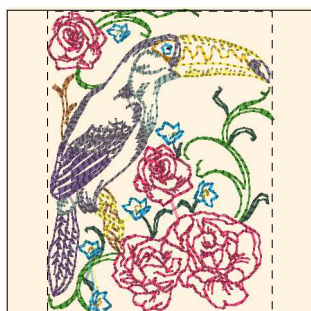
- 1. Blue Black (Sul-R:1182)
- 2. Goldenrod (Sul-R:1024)
- 3. Cinnamon (Sul-R:568)
- 4. Nile Green (Sul-R:1274)
- 5. Lt. Plum (Sul-R:1297)
- 6. Dk. Mauve (Sul-R:1119)
- 7. Coral (Sul-R:1154)
- 8. Pale Yellow (Sul-R:1061)

Tropical_birds_01-4x4.dst
2.84x3.92 inches; 8,533 stitches
8 thread changes; 8 colors



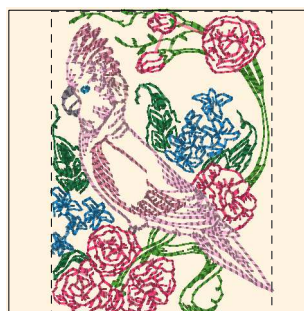
- 1. Blue Black (Sul-R:1182)
- 2. Goldenrod (Sul-R:1024)
- 3. Mimosa Yellow (Sul-R:1187)
- 4. Maple (Sul-R:1021)
- 5. Autumn Gold (Sul-R:523)
- 6. Forest Green (Sul-R:538)
- 7. Pistachio (Sul-R:1276)
- 8. Coral (Sul-R:1154)
- 9. Mauve (Sul-R:1117)
- 10. Duck Wing Blue (Sul-R:1250)

Tropical_birds_02-4x4.dst
2.89x3.91 inches; 7,851 stitches
10 thread changes; 10 colors



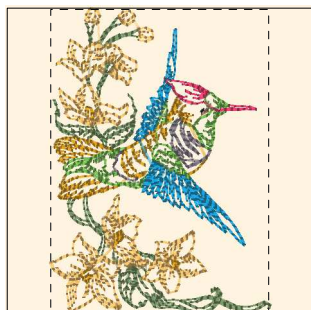
- 1. Blue Black (Sul-R:1182)
- 2. Goldenrod (Sul-R:1024)
- 3. Sunflower Gold (Sul-R:1333)
- 4. Tan (Sul-R:1126)
- 5. Sun Yellow (Sul-R:1124)
- 6. Forest Green (Sul-R:538)
- 7. Grass Green (Sul-R:1049)
- 8. Petal Pink (Sul-R:1307)
- 9. Lt. Plum (Sul-R:1297)
- 10. (Sul-R:1330)
- 11. Sage Green (Sul-R:1305)
- 12. Duck Wing Blue (Sul-R:1250)

Tropical_birds_03-4x4.dst
2.89x3.91 inches; 7,945 stitches
12 thread changes; 12 colors



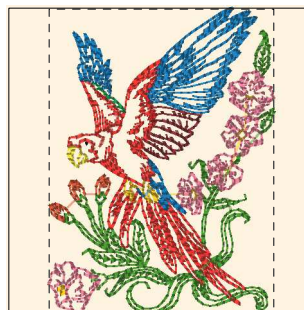
- 1. Blue Black (Sul-R:1182)
- 2. Xmas Green (Sul-R:1051)
- 3. Grass Green (Sul-R:1049)
- 4. Petal Pink (Sul-R:1307)
- 5. (Sul-R:1330)
- 6. Dk. Mauve (Sul-R:1119)
- 7. Taupe (Sul-R:1213)
- 8. Mauve (Sul-R:1117)
- 9. (Sul-R:1290)
- 10. Duck Wing Blue (Sul-R:1250)

Tropical_birds_04-4x4.dst
2.84x3.91 inches; 9,376 stitches
10 thread changes; 10 colors



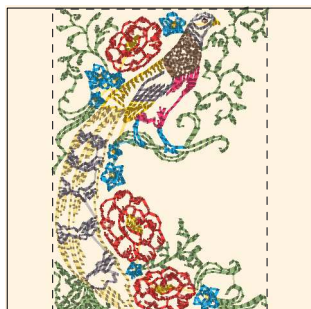
- 1. Blue Black (Sul-R:1182)
- 2. Sunflower Gold (Sul-R:1333)
- 3. Nile Green (Sul-R:1274)
- 4. Moss Green (Sul-R:630)
- 5. Petal Pink (Sul-R:1307)
- 6. Toast (Sul-R:1266)
- 7. Cornsilk (Sul-R:502)
- 8. (Sul-R:1330)
- 9. Duck Wing Blue (Sul-R:1250)

Tropical_birds_05-4x4.dst
2.81x3.91 inches; 7,431 stitches
9 thread changes; 9 colors



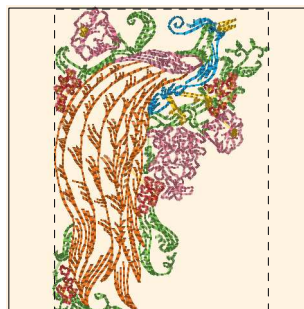
- 1. Blue Black (Sul-R:1182)
- 2. Goldenrod (Sul-R:1024)
- 3. Poppy (Sul-R:1317)
- 4. Deep Mauve (Sul-R:1237)
- 5. Maple (Sul-R:1021)
- 6. Nile Green (Sul-R:1274)
- 7. Sun Yellow (Sul-R:1124)
- 8. Bright Green (Sul-R:1278)
- 9. Grass Green (Sul-R:1049)
- 10. Coral (Sul-R:1154)
- 11. (Sul-R:1290)

Tropical_birds_06-4x4.dst
2.89x3.91 inches; 9,300 stitches
11 thread changes; 11 colors



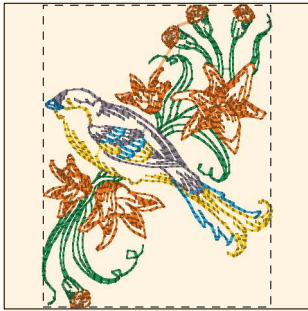
- 1. Blue Black (Sul-R:1182)
- 2. Goldenrod (Sul-R:1024)
- 3. Poppy (Sul-R:1317)
- 4. Toast (Sul-R:1266)
- 5. Petal Pink (Sul-R:1307)
- 6. Pistachio (Sul-R:1276)
- 7. Dk. Ecrú (Sul-R:1128)
- 8. Tawny Tan (Sul-R:1055)
- 9. (Sul-R:1330)
- 10. Gray Khaki (Sul-R:1321)
- 11. Duck Wing Blue (Sul-R:1250)

Tropical_birds_07-4x4.dst
2.77x3.91 inches; 10,059 stitches
11 thread changes; 11 colors



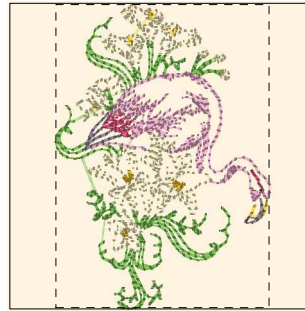
- 1. Blue Black (Sul-R:1182)
- 2. Goldenrod (Sul-R:1024)
- 3. Cinnamon (Sul-R:568)
- 4. Poppy (Sul-R:1317)
- 5. Nile Green (Sul-R:1274)
- 6. Coral (Sul-R:1154)
- 7. Dk. Mauve (Sul-R:1119)
- 8. Coral (Sul-R:1154)
- 9. Duck Wing Blue (Sul-R:1250)

Tropical_birds_08-4x4.dst
2.76x3.91 inches; 9,033 stitches
9 thread changes; 8 colors



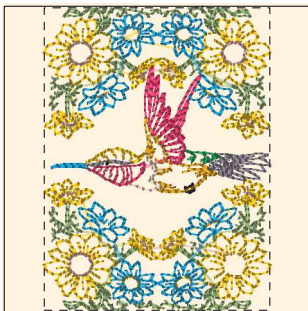
- 1. Blue Black (Sul-R:1182)
- 2. Goldenrod (Sul-R:1024)
- 3. Cinnamon (Sul-R:568)
- 4. Garden Green (Sul-R:569)
- 5. (Sul-R:1330)
- 6. (Sul-R:1290)
- 7. Duck Wing Blue (Sul-R:1250)

Tropical_birds_09-4x4.dst
2.93x3.89 inches; 6,527 stitches
7 thread changes; 7 colors



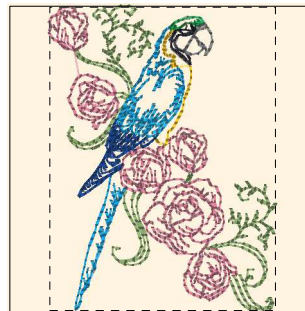
- 1. Blue Black (Sul-R:1182)
- 2. Goldenrod (Sul-R:1024)
- 3. Nile Green (Sul-R:1274)
- 4. Red Geranium (Sul-R:1188)
- 5. (Sul-R:1330)
- 6. Pale Yellow (Sul-R:1061)
- 7. Mauve (Sul-R:1117)

Tropical_birds_10-4x4.dst
2.74x3.91 inches; 5,847 stitches
7 thread changes; 7 colors



- 1. Blue Black (Sul-R:1182)
- 2. Goldenrod (Sul-R:1024)
- 3. Sunflower Gold (Sul-R:1333)
- 4. Bright Green (Sul-R:1278)
- 5. Petal Pink (Sul-R:1307)
- 6. Pistachio (Sul-R:1276)
- 7. (Sul-R:1330)
- 8. Deep Ecru (Sul-R:1149)
- 9. Taupe (Sul-R:1213)
- 10. Duck Wing Blue (Sul-R:1250)

Tropical_birds_11-4x4.dst
2.91x3.90 inches; 10,831 stitches
10 thread changes; 10 colors



- 1. Blue Black (Sul-R:1182)
- 2. Goldenrod (Sul-R:1024)
- 3. Bright Green (Sul-R:1278)
- 4. Toast (Sul-R:1266)
- 5. Pistachio (Sul-R:1276)
- 6. Gray (Sul-R:1219)
- 7. Dk. Mauve (Sul-R:1119)
- 8. Team Blue (Sul-R:1535)
- 9. Duck Wing Blue (Sul-R:1250)

Tropical_birds_12-4x4.dst
2.91x3.91 inches; 6,127 stitches
9 thread changes; 9 colors