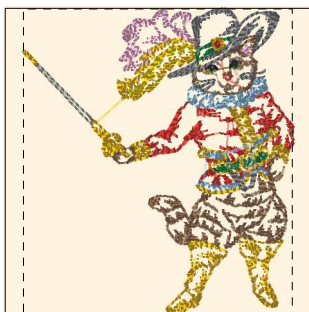


Printed 2/2/2014



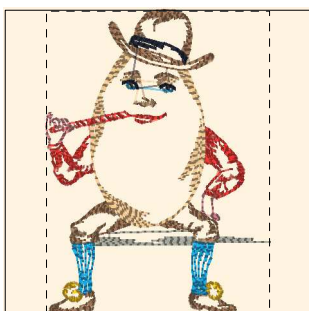
- 1. Goldenrod (Sul-R:1024)
- 2. Mimosa Yellow (Sul-R:1187)
- 3. Poppy (Sul-R:1317)
- 4. Garden Green (Sul-R:569)
- 5. Toast (Sul-R:1266)
- 6. Gray (Sul-R:1219)
- 7. Dk. Ecru (Sul-R:1128)
- 8. Putty (Sul-R:1508)
- 9. Lt. Pink (Sul-R:1115)
- 10. Cornflower Blue (Sul-R:1249)
- 11. Blue Black (Sul-R:1182)

Nursery_rhyme_01-4x4.dst
3.46x3.92 inches; 9,811 stitches
11 thread changes; 11 colors



- 1. Goldenrod (Sul-R:1024)
- 2. Mimosa Yellow (Sul-R:1187)
- 3. Sunflower Gold (Sul-R:1333)
- 4. Poppy (Sul-R:1317)
- 5. Garden Green (Sul-R:569)
- 6. Med. Dk. Khaki (Sul-R:1040)
- 7. Med. Steel Gray (Sul-R:1166)
- 8. Putty (Sul-R:1508)
- 9. Dusty Navy (Sul-R:1198)
- 10. Lt. Putty (Sul-R:1229)
- 11. (Sul-R:1290)
- 12. Lt. Coral (Sul-R:1148)
- 13. (Sul-R:1290)
- 14. Blue Black (Sul-R:1182)
- 15. Duck Wing Blue (Sul-R:1250)

Nursery_rhyme_02-4x4.dst
3.90x3.57 inches; 17,805 stitches
15 thread changes; 14 colors



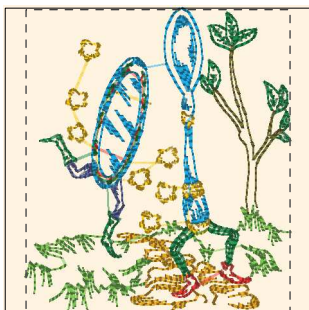
- 1. Poppy (Sul-R:1317)
- 2. Toast (Sul-R:1266)
- 3. Dewberry (Sul-R:1304)
- 4. (Sul-R:622)
- 5. Putty (Sul-R:1508)
- 6. Duck Wing Blue (Sul-R:1250)
- 7. Goldenrod (Sul-R:1024)
- 8. Blue Black (Sul-R:1182)

Nursery_rhyme_03-4x4.dst
2.87x3.91 inches; 6,042 stitches
8 thread changes; 8 colors



- 1. Toast (Sul-R:1266)
- 2. Goldenrod (Sul-R:1024)
- 3. Poppy (Sul-R:1317)
- 4. Garden Green (Sul-R:569)
- 5. Drab Green (Sul-R:1228)
- 6. Dk. Ecru (Sul-R:1128)
- 7. Dusty Navy (Sul-R:1198)
- 8. Duck Wing Blue (Sul-R:1250)
- 9. Blue Black (Sul-R:1182)

Nursery_rhyme_04-4x4.dst
3.10x3.90 inches; 7,947 stitches
9 thread changes; 9 colors



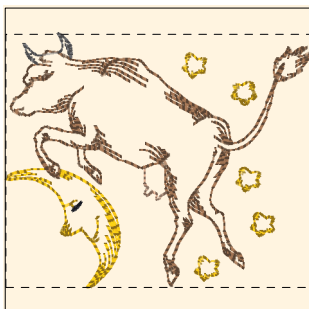
- 1. Goldenrod (Sul-R:1024)
- 2. Sunflower Gold (Sul-R:1333)
- 3. Poppy (Sul-R:1317)
- 4. Nile Green (Sul-R:1274)
- 5. Garden Green (Sul-R:569)
- 6. Drab Green (Sul-R:1228)
- 7. Dusty Navy (Sul-R:1198)
- 8. Duck Wing Blue (Sul-R:1250)

Nursery_rhyme_05-4x4.dst
3.40x3.89 inches; 7,574 stitches
8 thread changes; 8 colors



- 1. Goldenrod (Sul-R:1024)
- 2. Poppy (Sul-R:1317)
- 3. Nile Green (Sul-R:1274)
- 4. Garden Green (Sul-R:569)
- 5. Drab Green (Sul-R:1228)
- 6. Gray (Sul-R:1219)
- 7. Peach (Sul-R:1019)
- 8. Dusty Navy (Sul-R:1198)
- 9. Blue Black (Sul-R:1182)

Nursery_rhyme_05-4x4_a.dst
3.09x3.89 inches; 7,627 stitches
9 thread changes; 9 colors



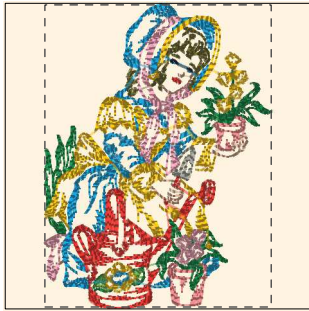
- 1. Goldenrod (Sul-R:1024)
- 2. Toast (Sul-R:1266)
- 3. Gray (Sul-R:1219)
- 4. Dk. Ecru (Sul-R:1128)
- 5. Blue Black (Sul-R:1182)

Nursery_rhyme_05-4x4_b.dst
3.92x3.26 inches; 6,056 stitches
5 thread changes; 5 colors



- 1. Goldenrod (Sul-R:1024)
- 2. Poppy (Sul-R:1317)
- 3. Drab Green (Sul-R:1228)
- 4. Toast (Sul-R:1266)
- 5. Lt. Khaki (Sul-R:1211)
- 6. Dk. Ecru (Sul-R:1128)
- 7. Team Blue (Sul-R:1535)
- 8. Putty (Sul-R:1508)
- 9. (Sul-R:1290)
- 10. Duck Wing Blue (Sul-R:1250)

Nursery_rhyme_06-4x4.dst
2.83x3.90 inches; 12,991 stitches
10 thread changes; 10 colors



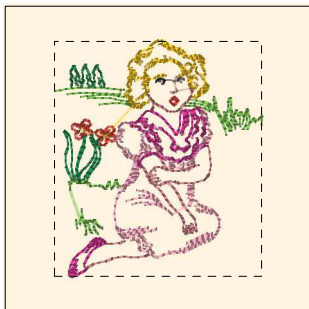
- 1. Dk. Ecru (Sul-R:1128)
- 2. Garden Green (Sul-R:569)
- 3. Nile Green (Sul-R:1274)
- 4. Drab Green (Sul-R:1228)
- 5. Peach (Sul-R:1019)
- 6. Putty (Sul-R:1508)
- 7. Lt. Coral (Sul-R:1148)
- 8. Duck Wing Blue (Sul-R:1250)
- 9. Poppy (Sul-R:1317)
- 10. Goldenrod (Sul-R:1024)
- 11. Blue Black (Sul-R:1182)

Nursery_rhyme_07-4x4.dst
2.91x3.89 inches; 13,140 stitches
11 thread changes; 11 colors



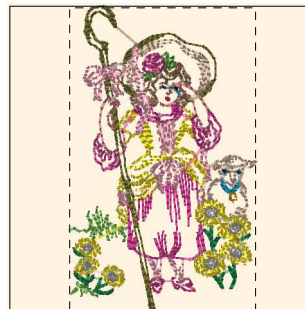
- 1. Goldenrod (Sul-R:1024)
- 2. Sunflower Gold (Sul-R:1333)
- 3. Poppy (Sul-R:1317)
- 4. Toast (Sul-R:1266)
- 5. Med. Dk. Khaki (Sul-R:1040)
- 6. Deep Eggplant (Sul-R:1301)
- 7. Dk. Ecru (Sul-R:1128)
- 8. Dewberry (Sul-R:1304)
- 9. Lemon Yellow (Sul-R:1067)
- 10. Putty (Sul-R:1508)
- 11. Duck Wing Blue (Sul-R:1250)
- 12. Blue Black (Sul-R:1182)

Nursery_rhyme_09-4x4.dst
3.89x3.70 inches; 6,557 stitches
12 thread changes; 12 colors



- 1. Goldenrod (Sul-R:1024)
- 2. Poppy (Sul-R:1317)
- 3. Nile Green (Sul-R:1274)
- 4. Garden Green (Sul-R:569)
- 5. Dewberry (Sul-R:1304)
- 6. Med. Rose (Sul-R:1231)
- 7. Lt. Coral (Sul-R:1148)
- 8. Blue Black (Sul-R:1182)

Nursery_rhyme_09-4x4_b.dst
2.67x3.03 inches; 4,578 stitches
8 thread changes; 8 colors



- 1. Toast (Sul-R:1266)
- 2. Nile Green (Sul-R:1274)
- 3. Garden Green (Sul-R:569)
- 4. Mimosa Yellow (Sul-R:1187)
- 5. Sunflower Gold (Sul-R:1333)
- 6. Poppy (Sul-R:1317)
- 7. Grass Green (Sul-R:1049)
- 8. Drab Green (Sul-R:1228)
- 9. Dewberry (Sul-R:1304)
- 10. Med. Rose (Sul-R:1231)
- 11. Med. Dk. Ecru (Sul-R:1054)
- 12. Steel Gray (Sul-R:1011)
- 13. Lt. Coral (Sul-R:1148)
- 14. Duck Wing Blue (Sul-R:1250)
- 15. Blue Black (Sul-R:1182)

Nursery_rhyme_10-4x4.dst
2.40x3.89 inches; 8,868 stitches
15 thread changes; 15 colors



- 1. Dk. Ecru (Sul-R:1128)
- 2. Toast (Sul-R:1266)
- 3. Sunflower Gold (Sul-R:1333)
- 4. Poppy (Sul-R:1317)
- 5. Deep Eggplant (Sul-R:1301)
- 6. Dewberry (Sul-R:1304)
- 7. Steel Gray (Sul-R:1011)
- 8. Goldenrod (Sul-R:1024)
- 9. Duck Wing Blue (Sul-R:1250)
- 10. Putty (Sul-R:1508)
- 11. Blue Black (Sul-R:1182)

Nursery_rhyme_11_4x4.dst
2.37x3.89 inches; 12,445 stitches
11 thread changes; 11 colors



- 1. Steel Gray (Sul-R:1011)
- 2. Mimosa Yellow (Sul-R:1187)
- 3. Cinnamon (Sul-R:568)
- 4. Sunflower Gold (Sul-R:1333)
- 5. Rust (Sul-R:1181)
- 6. Toast (Sul-R:1266)
- 7. Drab Green (Sul-R:1228)
- 8. Dk. Ecru (Sul-R:1128)
- 9. Dewberry (Sul-R:1304)
- 10. Putty (Sul-R:1508)
- 11. Poppy (Sul-R:1317)
- 12. Goldenrod (Sul-R:1024)
- 13. Duck Wing Blue (Sul-R:1250)
- 14. Blue Black (Sul-R:1182)

Nursery_rhyme_13-4x4.dst
3.20x3.90 inches; 10,608 stitches
14 thread changes; 14 colors