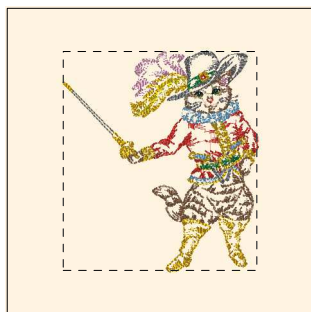


Printed 2/2/2014



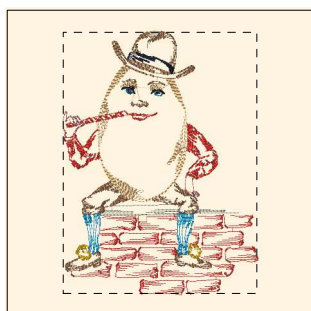
- 1. Goldenrod (Sul-R:1024)
- 2. Mimosa Yellow (Sul-R:1187)
- 3. Poppy (Sul-R:1317)
- 4. Garden Green (Sul-R:569)
- 5. Toast (Sul-R:1266)
- 6. Gray (Sul-R:1219)
- 7. Dk. Ecru (Sul-R:1128)
- 8. Putty (Sul-R:1508)
- 9. Lt. Pink (Sul-R:1115)
- 10. Cornflower Blue (Sul-R:1249)
- 11. Blue Black (Sul-R:1182)

Nursery_rhyme_01-5x7.dst
4.99x5.64 inches; 14,043 stitches
11 thread changes; 11 colors



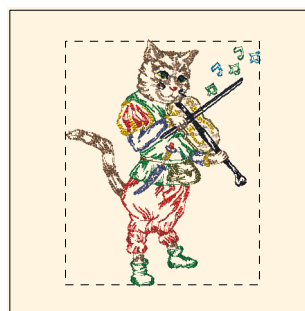
- 1. Goldenrod (Sul-R:1024)
- 2. Mimosa Yellow (Sul-R:1187)
- 3. Sunflower Gold (Sul-R:1333)
- 4. Poppy (Sul-R:1317)
- 5. Garden Green (Sul-R:569)
- 6. Med. Dk. Khaki (Sul-R:1040)
- 7. Med. Steel Gray (Sul-R:1166)
- 8. Putty (Sul-R:1508)
- 9. Dusty Navy (Sul-R:1198)
- 10. Lt. Putty (Sul-R:1229)
- 11. (Sul-R:1290)
- 12. Lt. Coral (Sul-R:1148)
- 13. (Sul-R:1290)
- 14. Blue Black (Sul-R:1182)
- 15. Duck Wing Blue (Sul-R:1250)

Nursery_rhyme_02-5x7.dst
5.46x5.00 inches; 25,230 stitches
15 thread changes; 14 colors



- 1. Poppy (Sul-R:1317)
- 2. Toast (Sul-R:1266)
- 3. Dewberry (Sul-R:1304)
- 4. (Sul-R:622)
- 5. Putty (Sul-R:1508)
- 6. Duck Wing Blue (Sul-R:1250)
- 7. Goldenrod (Sul-R:1024)
- 8. Blue Black (Sul-R:1182)

Nursery_rhyme_03-5x7.dst
4.99x6.72 inches; 13,587 stitches
8 thread changes; 8 colors



- 1. Toast (Sul-R:1266)
- 2. Goldenrod (Sul-R:1024)
- 3. Poppy (Sul-R:1317)
- 4. Garden Green (Sul-R:569)
- 5. Drab Green (Sul-R:1228)
- 6. Dk. Ecru (Sul-R:1128)
- 7. Dusty Navy (Sul-R:1198)
- 8. Duck Wing Blue (Sul-R:1250)
- 9. Blue Black (Sul-R:1182)

Nursery_rhyme_04-5x7.dst
5.00x6.28 inches; 12,799 stitches
9 thread changes; 9 colors



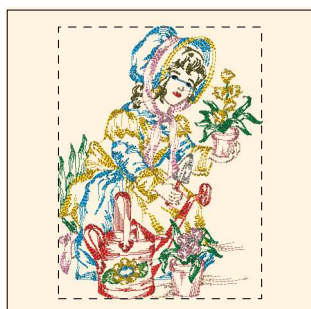
- 1. Goldenrod (Sul-R:1024)
- 2. Sunflower Gold (Sul-R:1333)
- 3. Poppy (Sul-R:1317)
- 4. Nile Green (Sul-R:1274)
- 5. Garden Green (Sul-R:569)
- 6. Drab Green (Sul-R:1228)
- 7. Gray (Sul-R:1219)
- 8. Peach (Sul-R:1019)
- 9. Dusty Navy (Sul-R:1198)
- 10. Duck Wing Blue (Sul-R:1250)
- 11. Blue Black (Sul-R:1182)

Nursery_rhyme_05-5x7.dst
7.00x4.66 inches; 17,137 stitches
11 thread changes; 11 colors



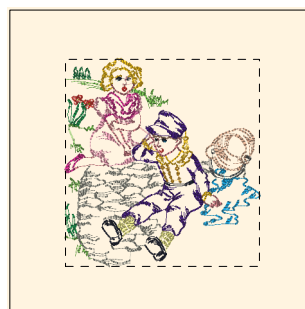
- 1. Goldenrod (Sul-R:1024)
- 2. Poppy (Sul-R:1317)
- 3. Nile Green (Sul-R:1274)
- 4. Garden Green (Sul-R:569)
- 5. Drab Green (Sul-R:1228)
- 6. Toast (Sul-R:1266)
- 7. Lt. Khaki (Sul-R:1211)
- 8. Gray (Sul-R:1219)
- 9. Dk. Ecru (Sul-R:1128)
- 10. Peach (Sul-R:1019)
- 11. Team Blue (Sul-R:1535)
- 12. Putty (Sul-R:1508)
- 13. Dusty Navy (Sul-R:1198)
- 14. (Sul-R:1290)
- 15. Duck Wing Blue (Sul-R:1250)
- 16. Blue Black (Sul-R:1182)

Nursery_rhyme_06-5x7.dst
5.91x5.00 inches; 23,207 stitches
16 thread changes; 16 colors



- 1. Dk. Ecru (Sul-R:1128)
- 2. Garden Green (Sul-R:569)
- 3. Nile Green (Sul-R:1274)
- 4. Drab Green (Sul-R:1228)
- 5. Peach (Sul-R:1019)
- 6. Putty (Sul-R:1508)
- 7. Lt. Coral (Sul-R:1148)
- 8. Duck Wing Blue (Sul-R:1250)
- 9. Poppy (Sul-R:1317)
- 10. Goldenrod (Sul-R:1024)
- 11. Blue Black (Sul-R:1182)

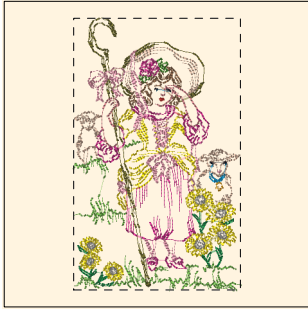
Nursery_rhyme_07-5x7.dst
5.24x6.99 inches; 22,938 stitches
11 thread changes; 11 colors



- 1. Goldenrod (Sul-R:1024)
- 2. Sunflower Gold (Sul-R:1333)
- 3. Poppy (Sul-R:1317)
- 4. Nile Green (Sul-R:1274)
- 5. Garden Green (Sul-R:569)
- 6. Toast (Sul-R:1266)
- 7. Med. Dk. Khaki (Sul-R:1040)
- 8. Deep Eggplant (Sul-R:1301)
- 9. Dk. Ecru (Sul-R:1128)
- 10. Dewberry (Sul-R:1304)
- 11. Med. Rose (Sul-R:1231)
- 12. Lemon Yellow (Sul-R:1067)
- 13. Putty (Sul-R:1508)
- 14. Lt. Coral (Sul-R:1148)
- 15. Duck Wing Blue (Sul-R:1250)
- 16. Blue Black (Sul-R:1182)

Nursery_rhyme_09-5x7.dst
5.00x5.33 inches; 14,014 stitches
16 thread changes; 16 colors

Printed 2/2/2014



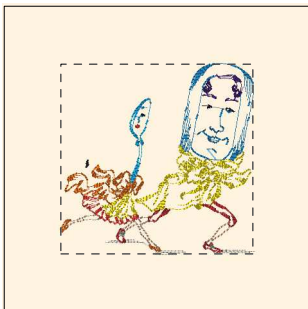
- 1. Toast (Sul-R:1266)
- 2. Nile Green (Sul-R:1274)
- 3. Garden Green (Sul-R:569)
- 4. Mimosa Yellow (Sul-R:1187)
- 5. Sunflower Gold (Sul-R:1333)
- 6. Poppy (Sul-R:1317)
- 7. Grass Green (Sul-R:1049)
- 8. Drab Green (Sul-R:1228)
- 9. Dewberry (Sul-R:1304)
- 10. Med. Rose (Sul-R:1231)
- 11. Med. Dk. Ecreu (Sul-R:1054)
- 12. Steel Gray (Sul-R:1011)
- 13. Lt. Coral (Sul-R:1148)
- 14. Duck Wing Blue (Sul-R:1250)
- 15. Blue Black (Sul-R:1182)

Nursery_rhyme_10-5x7.dst
4.30x7.00 inches; 17,183 stitches
15 thread changes; 15 colors



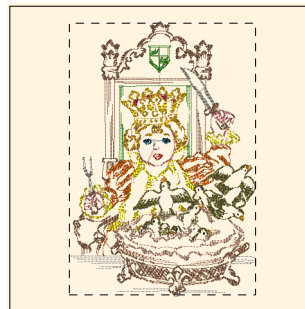
- 1. Dk. Ecreu (Sul-R:1128)
- 2. Toast (Sul-R:1266)
- 3. Sunflower Gold (Sul-R:1333)
- 4. Poppy (Sul-R:1317)
- 5. Grass Green (Sul-R:1049)
- 6. Deep Eggplant (Sul-R:1301)
- 7. Dewberry (Sul-R:1304)
- 8. Steel Gray (Sul-R:1011)
- 9. Goldenrod (Sul-R:1024)
- 10. Duck Wing Blue (Sul-R:1250)
- 11. Putty (Sul-R:1508)
- 12. Blue Black (Sul-R:1182)

Nursery_rhyme_11_5x7.dst
4.99x6.43 inches; 13,328 stitches
12 thread changes; 12 colors



- 1. Steel Gray (Sul-R:1011)
- 2. Mimosa Yellow (Sul-R:1187)
- 3. Cinnamon (Sul-R:568)
- 4. Poppy (Sul-R:1317)
- 5. Rust (Sul-R:1181)
- 6. Deep Eggplant (Sul-R:1301)
- 7. Med. Dk. Ecreu (Sul-R:1054)
- 8. (Sul-R:1290)
- 9. Duck Wing Blue (Sul-R:1250)
- 10. Putty (Sul-R:1508)
- 11. Blue Black (Sul-R:1182)

Nursery_rhyme_12-5x7.dst
4.95x4.89 inches; 8,825 stitches
11 thread changes; 11 colors



- 1. Steel Gray (Sul-R:1011)
- 2. Mimosa Yellow (Sul-R:1187)
- 3. Cinnamon (Sul-R:568)
- 4. Sunflower Gold (Sul-R:1333)
- 5. Rust (Sul-R:1181)
- 6. Grass Green (Sul-R:1049)
- 7. Toast (Sul-R:1266)
- 8. Drab Green (Sul-R:1228)
- 9. Dk. Ecreu (Sul-R:1128)
- 10. Dewberry (Sul-R:1304)
- 11. Putty (Sul-R:1508)
- 12. Poppy (Sul-R:1317)
- 13. Goldenrod (Sul-R:1024)
- 14. Duck Wing Blue (Sul-R:1250)
- 15. Blue Black (Sul-R:1182)

Nursery_rhyme_13-5x7.dst
4.80x7.00 inches; 20,016 stitches
15 thread changes; 15 colors