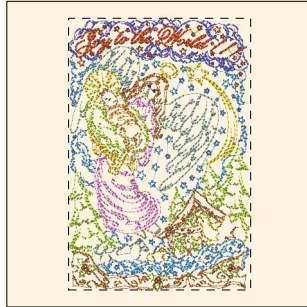


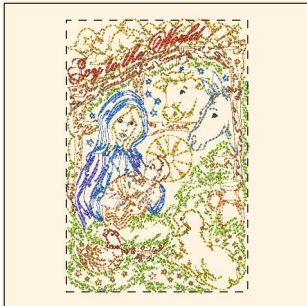
- 1. (Sul-R:1282)
- 2. Peacock Blue (Sul-R:1134)
- 3. (Sul-R:1244)
- 4. Tan (Sul-R:1126)
- 5. Maple (Sul-R:1021)
- 6. Butterfly Gold (Sul-R:567)
- 7. (Sul-R:1243)
- 8. (Sul-R:1260)
- 9. Maple (Sul-R:1021)
- 10. Med. Dk. Ecru (Sul-R:1054)
- 11. Royal Blue (Sul-R:1076)
- 12. Nassau Blue (Sul-R:1242)
- 13. (Sul-R:1036)

Nativity_01-5x7.dst
 4.62x7.00 inches; 27,225 stitches
 13 thread changes; 12 colors



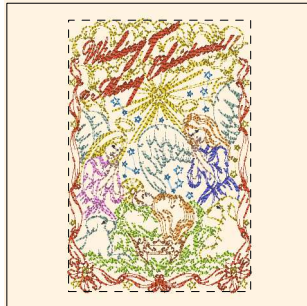
- 1. (Sul-R:1282)
- 2. Peacock Blue (Sul-R:1134)
- 3. Sage Green (Sul-R:1305)
- 4. Sweet Pink (Sul-R:1256)
- 5. (Sul-R:1244)
- 6. Tan (Sul-R:1126)
- 7. Maple (Sul-R:1021)
- 8. Butterfly Gold (Sul-R:567)
- 9. (Sul-R:1243)
- 10. Maple (Sul-R:1021)
- 11. (Sul-R:1243)
- 12. Nassau Blue (Sul-R:1242)
- 13. (Sul-R:1241)
- 14. Med. Dk. Ecru (Sul-R:1054)

Nativity_02-5x7.dst
 4.69x7.00 inches; 24,241 stitches
 14 thread changes; 12 colors



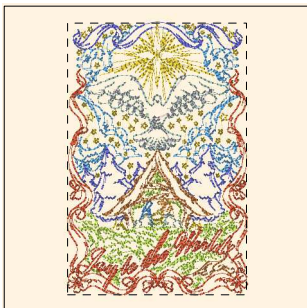
- 1. (Sul-R:1282)
- 2. Tan (Sul-R:1126)
- 3. (Sul-R:1244)
- 4. Butterfly Gold (Sul-R:567)
- 5. Maple (Sul-R:1021)
- 6. Butterfly Gold (Sul-R:567)
- 7. (Sul-R:1243)
- 8. (Sul-R:1260)
- 9. (Sul-R:1241)
- 10. Med. Dk. Ecru (Sul-R:1054)
- 11. Sage Green (Sul-R:1305)
- 12. Royal Blue (Sul-R:1076)
- 13. Nassau Blue (Sul-R:1242)
- 14. Peacock Blue (Sul-R:1134)

Nativity_03-5x7.dst
 4.68x7.00 inches; 24,574 stitches
 14 thread changes; 13 colors



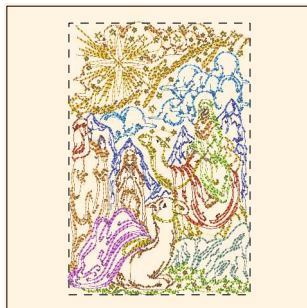
- 1. (Sul-R:1282)
- 2. Tan (Sul-R:1126)
- 3. Sage Green (Sul-R:1305)
- 4. Maple (Sul-R:1021)
- 5. (Sul-R:1243)
- 6. Butterfly Gold (Sul-R:567)
- 7. Maple (Sul-R:1021)
- 8. (Sul-R:1243)
- 9. Med. Dk. Ecru (Sul-R:1054)
- 10. (Sul-R:1241)
- 11. Nassau Blue (Sul-R:1242)
- 12. Peacock Blue (Sul-R:1134)
- 13. Sweet Pink (Sul-R:1256)

Nativity_04-5x7.dst
 4.69x6.99 inches; 24,372 stitches
 13 thread changes; 11 colors



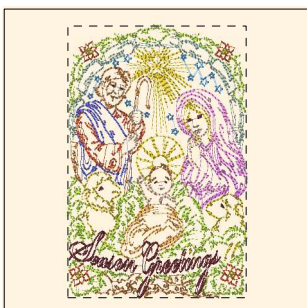
- 1. (Sul-R:1282)
- 2. Tan (Sul-R:1126)
- 3. (Sul-R:1244)
- 4. Maple (Sul-R:1021)
- 5. Butterfly Gold (Sul-R:567)
- 6. (Sul-R:1243)
- 7. Maple (Sul-R:1021)
- 8. Sage Green (Sul-R:1305)
- 9. Dk. Nickel Gray (Sul-R:1329)
- 10. Royal Blue (Sul-R:1076)
- 11. Nassau Blue (Sul-R:1242)
- 12. Peacock Blue (Sul-R:1134)

Nativity_05-5x7.dst
 4.61x7.00 inches; 24,083 stitches
 12 thread changes; 11 colors



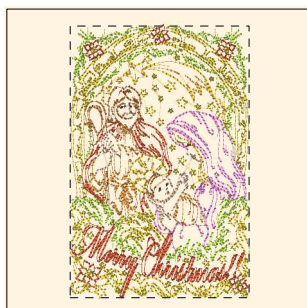
- 1. Peacock Blue (Sul-R:1134)
- 2. Tan (Sul-R:1126)
- 3. (Sul-R:1244)
- 4. Maple (Sul-R:1021)
- 5. Butterfly Gold (Sul-R:567)
- 6. (Sul-R:1243)
- 7. (Sul-R:1260)
- 8. (Sul-R:1282)
- 9. Maple (Sul-R:1021)
- 10. Dk. Taupe (Sul-R:1179)
- 11. Nassau Blue (Sul-R:1242)
- 12. Dk. Periwinkle (Sul-R:1226)
- 13. Dk. Orchid (Sul-R:1033)
- 14. Sage Green (Sul-R:1305)
- 15. Med. Dk. Ecru (Sul-R:1054)
- 16. (Sul-R:1241)

Nativity_06-5x7.dst
 4.67x7.00 inches; 22,023 stitches
 16 thread changes; 15 colors



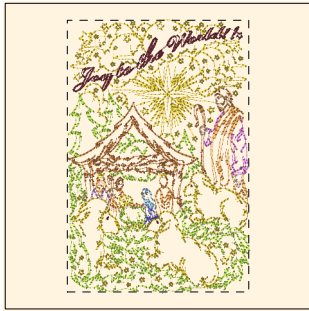
- 1. (Sul-R:1282)
- 2. (Sul-R:1244)
- 3. Tan (Sul-R:1126)
- 4. Maple (Sul-R:1021)
- 5. Peacock Blue (Sul-R:1134)
- 6. Sage Green (Sul-R:1305)
- 7. Butterfly Gold (Sul-R:567)
- 8. (Sul-R:1243)
- 9. (Sul-R:1036)
- 10. Med. Dk. Ecru (Sul-R:1054)
- 11. Nassau Blue (Sul-R:1242)
- 12. Dk. Orchid (Sul-R:1033)
- 13. Sweet Pink (Sul-R:1256)
- 14. (Sul-R:1036)

Nativity_07-5x7.dst
 4.59x7.00 inches; 23,914 stitches
 14 thread changes; 13 colors



- 1. (Sul-R:1282)
- 2. (Sul-R:1244)
- 3. Tan (Sul-R:1126)
- 4. Maple (Sul-R:1021)
- 5. Butterfly Gold (Sul-R:567)
- 6. (Sul-R:1243)
- 7. Butterfly Gold (Sul-R:567)
- 8. Comsilk (Sul-R:502)
- 9. Med. Dk. Ecru (Sul-R:1054)
- 10. Dk. Orchid (Sul-R:1033)
- 11. Sweet Pink (Sul-R:1256)
- 12. (Sul-R:1036)

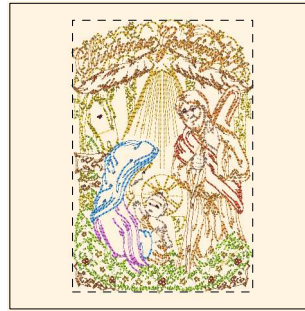
Nativity_08-5x7.dst
 4.61x7.00 inches; 23,593 stitches
 12 thread changes; 11 colors



- 1. (Sul-R:1282)
- 2. (Sul-R:1244)
- 3. Tan (Sul-R:1126)
- 4. Butterfly Gold (Sul-R:567)
- 5. (Sul-R:1243)
- 6. (Sul-R:1036)
- 7. Med. Dk. Ecru (Sul-R:1054)
- 8. Nassau Blue (Sul-R:1242)
- 9. Dk. Orchid (Sul-R:1033)
- 10. Hyacinth (Sul-R:1296)
- 11. Med. Powder Blue (Sul-R:1201)

Nativity_09-5x7.dst

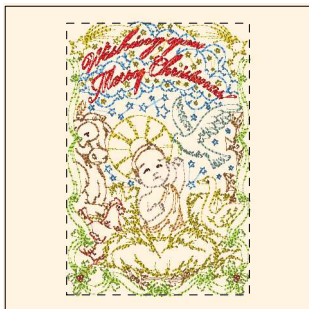
4.67x7.00 inches; 21,392 stitches
11 thread changes; 11 colors



- 1. (Sul-R:1282)
- 2. (Sul-R:1244)
- 3. Tan (Sul-R:1126)
- 4. Autumn Gold (Sul-R:523)
- 5. Maple (Sul-R:1021)
- 6. Butterfly Gold (Sul-R:567)
- 7. (Sul-R:1243)
- 8. (Sul-R:1260)
- 9. (Sul-R:1244)
- 10. Med. Dk. Ecru (Sul-R:1054)
- 11. Dk. Orchid (Sul-R:1033)
- 12. Peacock Blue (Sul-R:1134)
- 13. (Sul-R:1036)

Nativity_10-5x7.dst

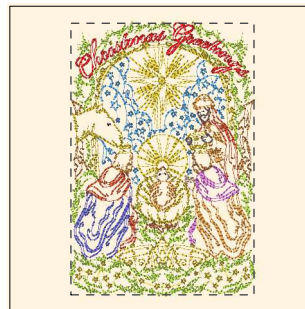
4.65x7.00 inches; 23,416 stitches
13 thread changes; 12 colors



- 1. (Sul-R:1282)
- 2. Peacock Blue (Sul-R:1134)
- 3. (Sul-R:1244)
- 4. Tan (Sul-R:1126)
- 5. Maple (Sul-R:1021)
- 6. Butterfly Gold (Sul-R:567)
- 7. (Sul-R:1319)
- 8. (Sul-R:1243)
- 9. Med. Dk. Ecru (Sul-R:1054)
- 10. Sage Green (Sul-R:1305)
- 11. (Sul-R:1036)

Nativity_11-5x7.dst

4.70x7.00 inches; 21,608 stitches
11 thread changes; 11 colors



- 1. (Sul-R:1282)
- 2. Peacock Blue (Sul-R:1134)
- 3. (Sul-R:1244)
- 4. Tan (Sul-R:1126)
- 5. Maple (Sul-R:1021)
- 6. Butterfly Gold (Sul-R:567)
- 7. (Sul-R:1243)
- 8. (Sul-R:1319)
- 9. Tan (Sul-R:1126)
- 10. Nassau Blue (Sul-R:1242)
- 11. Dk. Orchid (Sul-R:1033)
- 12. Dk. Taupe (Sul-R:1179)
- 13. Med. Dk. Ecru (Sul-R:1054)
- 14. (Sul-R:1036)

Nativity_12-5x7.dst

4.72x7.00 inches; 25,222 stitches
14 thread changes; 13 colors