



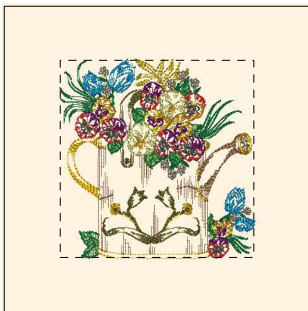
- 1. Goldenrod (Sul-R:1024)
- 2. Mimosa Yellow (Sul-R:1187)
- 3. Blackberry (Sul-R:1215)
- 4. Sunflower Gold (Sul-R:1333)
- 5. Nile Green (Sul-R:1274)
- 6. Garden Green (Sul-R:569)
- 7. Xmas Green (Sul-R:1051)
- 8. Drab Green (Sul-R:1228)
- 9. Gray (Sul-R:1219)
- 10. (Sul-R:1269)
- 11. Fuchsia (Sul-R:1192)
- 12. Med. Rose (Sul-R:1231)
- 13. Putty (Sul-R:1508)
- 14. (Sul-R:1290)
- 15. Duck Wing Blue (Sul-R:1250)

**Water\_cans\_01-5x7.dst**  
5.00x5.00 inches; 21,686 stitches  
15 thread changes; 15 colors



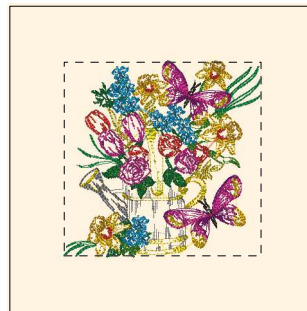
- 1. Goldenrod (Sul-R:1024)
- 2. Mimosa Yellow (Sul-R:1187)
- 3. (Sul-R:1244)
- 4. Sunflower Gold (Sul-R:1333)
- 5. Poppy (Sul-R:1317)
- 6. Deep Mauve (Sul-R:1237)
- 7. Grass Green (Sul-R:1049)
- 8. Nile Green (Sul-R:1274)
- 9. Garden Green (Sul-R:569)
- 10. Xmas Green (Sul-R:1051)
- 11. Med. Dk. Khaki (Sul-R:1040)
- 12. Gray (Sul-R:1219)
- 13. Med. Rose (Sul-R:1231)
- 14. Putty (Sul-R:1508)
- 15. Sterling (Sul-R:1295)
- 16. Coral (Sul-R:1154)

**Water\_cans\_02-5x7.dst**  
5.00x5.10 inches; 23,894 stitches  
16 thread changes; 16 colors



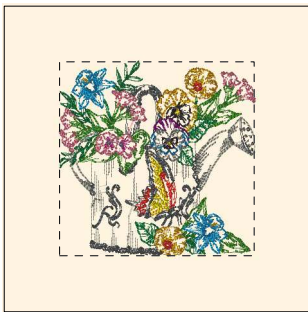
- 1. Goldenrod (Sul-R:1024)
- 2. Mimosa Yellow (Sul-R:1187)
- 3. (Sul-R:1244)
- 4. Sunflower Gold (Sul-R:1333)
- 5. Poppy (Sul-R:1317)
- 6. Nile Green (Sul-R:1274)
- 7. Garden Green (Sul-R:569)
- 8. Xmas Green (Sul-R:1051)
- 9. Drab Green (Sul-R:1228)
- 10. Toast (Sul-R:1266)
- 11. Med. Dk. Khaki (Sul-R:1040)
- 12. Lt. Avocado (Sul-R:1209)
- 13. Fuchsia (Sul-R:1192)
- 14. Putty (Sul-R:1508)
- 15. Duck Wing Blue (Sul-R:1250)

**Water\_cans\_03-5x7.dst**  
4.99x5.08 inches; 24,955 stitches  
15 thread changes; 15 colors



- 1. Goldenrod (Sul-R:1024)
- 2. Mimosa Yellow (Sul-R:1187)
- 3. (Sul-R:1244)
- 4. Blackberry (Sul-R:1215)
- 5. Sunflower Gold (Sul-R:1333)
- 6. Poppy (Sul-R:1317)
- 7. Grass Green (Sul-R:1049)
- 8. Garden Green (Sul-R:569)
- 9. Xmas Green (Sul-R:1051)
- 10. Gray (Sul-R:1219)
- 11. Fuchsia (Sul-R:1192)
- 12. Med. Rose (Sul-R:1231)
- 13. (Sul-R:1290)
- 14. Duck Wing Blue (Sul-R:1250)

**Water\_cans\_04-5x7.dst**  
5.06x4.99 inches; 26,778 stitches  
14 thread changes; 14 colors



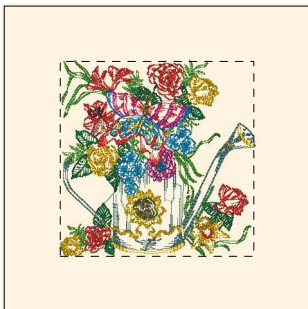
- 1. Goldenrod (Sul-R:1024)
- 2. Mimosa Yellow (Sul-R:1187)
- 3. Blackberry (Sul-R:1215)
- 4. Sunflower Gold (Sul-R:1333)
- 5. Poppy (Sul-R:1317)
- 6. Grass Green (Sul-R:1049)
- 7. Garden Green (Sul-R:569)
- 8. Xmas Green (Sul-R:1051)
- 9. Med. Dk. Khaki (Sul-R:1040)
- 10. Gray (Sul-R:1219)
- 11. Fuchsia (Sul-R:1192)
- 12. Med. Rose (Sul-R:1231)
- 13. Putty (Sul-R:1508)
- 14. Sterling (Sul-R:1295)
- 15. Coral (Sul-R:1154)
- 16. (Sul-R:1290)
- 17. Duck Wing Blue (Sul-R:1250)

**Water\_cans\_05-5x7.dst**  
5.01x5.00 inches; 24,452 stitches  
17 thread changes; 17 colors



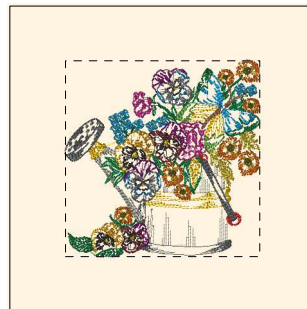
- 1. Goldenrod (Sul-R:1024)
- 2. Mimosa Yellow (Sul-R:1187)
- 3. Sunflower Gold (Sul-R:1333)
- 4. Poppy (Sul-R:1317)
- 5. Deep Mauve (Sul-R:1237)
- 6. Grass Green (Sul-R:1049)
- 7. Nile Green (Sul-R:1274)
- 8. Garden Green (Sul-R:569)
- 9. Xmas Green (Sul-R:1051)
- 10. Toast (Sul-R:1266)
- 11. Med. Dk. Khaki (Sul-R:1040)
- 12. Deep Eggplant (Sul-R:1301)
- 13. Gray (Sul-R:1219)
- 14. Fuchsia (Sul-R:1192)
- 15. Med. Rose (Sul-R:1231)
- 16. Coral (Sul-R:1154)
- 17. Duck Wing Blue (Sul-R:1250)

**Water\_cans\_06-5x7.dst**  
5.04x4.99 inches; 23,279 stitches  
17 thread changes; 17 colors



- 1. Goldenrod (Sul-R:1024)
- 2. Mimosa Yellow (Sul-R:1187)
- 3. Sunflower Gold (Sul-R:1333)
- 4. Poppy (Sul-R:1317)
- 5. Grass Green (Sul-R:1049)
- 6. Nile Green (Sul-R:1274)
- 7. (Sul-R:1036)
- 8. Xmas Green (Sul-R:1051)
- 9. Drab Green (Sul-R:1228)
- 10. Dk. Ecru (Sul-R:1128)
- 11. Dk. Sage Green (Sul-R:1285)
- 12. Med. Rose (Sul-R:1231)
- 13. (Sul-R:1290)
- 14. Duck Wing Blue (Sul-R:1250)

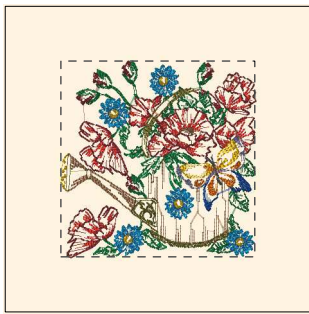
**Water\_cans\_07-5x7.dst**  
4.99x5.02 inches; 27,424 stitches  
14 thread changes; 14 colors



- 1. Goldenrod (Sul-R:1024)
- 2. Mimosa Yellow (Sul-R:1187)
- 3. (Sul-R:1244)
- 4. Cinnamon (Sul-R:568)
- 5. Blackberry (Sul-R:1215)
- 6. Sunflower Gold (Sul-R:1333)
- 7. Poppy (Sul-R:1317)
- 8. Deep Mauve (Sul-R:1237)
- 9. Nile Green (Sul-R:1274)
- 10. Garden Green (Sul-R:569)
- 11. Xmas Green (Sul-R:1051)
- 12. Drab Green (Sul-R:1228)
- 13. Toast (Sul-R:1266)
- 14. Med. Dk. Khaki (Sul-R:1040)
- 15. Gray (Sul-R:1219)
- 16. Fuchsia (Sul-R:1192)
- 17. Med. Rose (Sul-R:1231)
- 18. Putty (Sul-R:1508)
- 19. (Sul-R:1290)
- 20. Duck Wing Blue (Sul-R:1250)

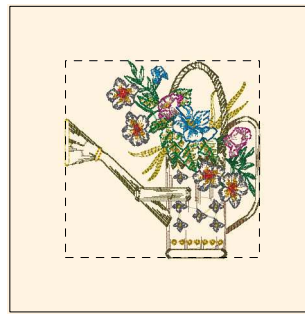
**Water\_cans\_08-5x7.dst**  
5.00x5.04 inches; 25,521 stitches  
20 thread changes; 20 colors

Printed 2/2/2014



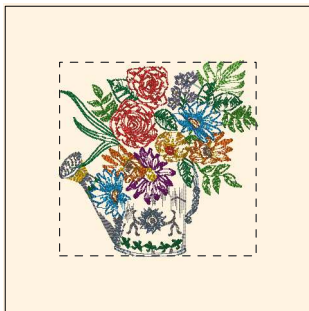
- 1. Goldenrod (Sul-R:1024)
- 2. Cinnamon (Sul-R:568)
- 3. Poppy (Sul-R:1317)
- 4. Deep Mauve (Sul-R:1237)
- 5. Garden Green (Sul-R:569)
- 6. Xmas Green (Sul-R:1051)
- 7. Drab Green (Sul-R:1228)
- 8. Toast (Sul-R:1266)
- 9. Med. Dk. Khaki (Sul-R:1040)
- 10. Team Blue (Sul-R:1535)
- 11. Sterling (Sul-R:1295)
- 12. (Sul-R:1290)
- 13. Duck Wing Blue (Sul-R:1250)

**Water\_cans\_09-5x7.dst**  
5.00x5.04 inches; 25,352 stitches  
13 thread changes; 13 colors



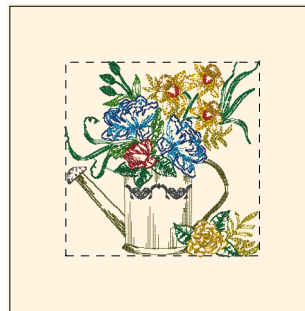
- 1. Goldenrod (Sul-R:1024)
- 2. (Sul-R:1244)
- 3. Sunflower Gold (Sul-R:1333)
- 4. Poppy (Sul-R:1317)
- 5. Garden Green (Sul-R:569)
- 6. Xmas Green (Sul-R:1051)
- 7. Drab Green (Sul-R:1228)
- 8. Toast (Sul-R:1266)
- 9. Gray (Sul-R:1219)
- 10. Med. Rose (Sul-R:1231)
- 11. (Sul-R:1290)
- 12. Taupe (Sul-R:1213)
- 13. Duck Wing Blue (Sul-R:1250)

**Water\_cans\_10-5x7.dst**  
5.00x5.06 inches; 18,099 stitches  
13 thread changes; 13 colors



- 1. Goldenrod (Sul-R:1024)
- 2. Mimosa Yellow (Sul-R:1187)
- 3. Cinnamon (Sul-R:568)
- 4. Sunflower Gold (Sul-R:1333)
- 5. Poppy (Sul-R:1317)
- 6. Deep Mauve (Sul-R:1237)
- 7. Grass Green (Sul-R:1049)
- 8. Nile Green (Sul-R:1274)
- 9. Xmas Green (Sul-R:1051)
- 10. Toast (Sul-R:1266)
- 11. Gray (Sul-R:1219)
- 12. Fuchsia (Sul-R:1192)
- 13. Dk. Winter Sky (Sul-R:1284)
- 14. Sterling (Sul-R:1295)
- 15. (Sul-R:1290)
- 16. Duck Wing Blue (Sul-R:1250)

**Water\_cans\_11-5x7.dst**  
5.06x4.99 inches; 23,564 stitches  
16 thread changes; 16 colors



- 1. Goldenrod (Sul-R:1024)
- 2. (Sul-R:1244)
- 3. Sunflower Gold (Sul-R:1333)
- 4. Poppy (Sul-R:1317)
- 5. Rust (Sul-R:1181)
- 6. Grass Green (Sul-R:1049)
- 7. Xmas Green (Sul-R:1051)
- 8. Drab Green (Sul-R:1228)
- 9. Med. Dk. Khaki (Sul-R:1040)
- 10. Team Blue (Sul-R:1535)
- 11. Duck Wing Blue (Sul-R:1250)

**Water\_cans\_12-5x7.dst**  
4.99x4.99 inches; 19,343 stitches  
11 thread changes; 11 colors