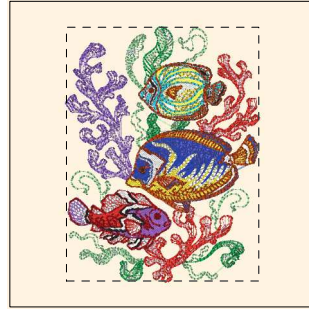


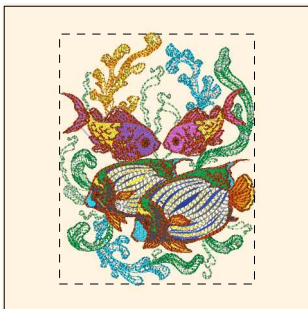
- 1. Sea Mist (Sul-R:1275)
- 2. Willow Green (Sul-R:1279)
- 3. Bright Green (Sul-R:1278)
- 4. Pastel Coral (Sul-R:1016)
- 5. Poppy (Sul-R:1317)
- 6. Pink (Sul-R:1121)
- 7. Hot Pink (Sul-R:1109)
- 8. Bright White (Sul-R:1001)
- 9. Turquoise (Sul-R:1095)
- 10. Cobalt Blue (Sul-R:526)
- 11. Orange Sunrise (Sul-R:1238)
- 12. Nassau Blue (Sul-R:1242)
- 13. (Sul-R:1260)
- 14. Black Cherry (Sul-R:1183)
- 15. Cobalt Blue (Sul-R:526)
- 16. (Sul-R:1260)
- 17. Black Cherry (Sul-R:1183)
- 18. Sunset (Sul-R:621)

Under-The-Sea-01-5x7.dst
5.00x6.65 inches; 43,028 stitches
18 thread changes; 15 colors



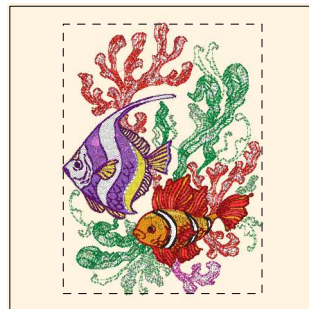
- 1. Sea Mist (Sul-R:1275)
- 2. Willow Green (Sul-R:1279)
- 3. Bright Green (Sul-R:1278)
- 4. Pastel Coral (Sul-R:1016)
- 5. Poppy (Sul-R:1317)
- 6. Lavender (Sul-R:1193)
- 7. Lt. Purple (Sul-R:1194)
- 8. Bright White (Sul-R:1001)
- 9. Cobalt Blue (Sul-R:526)
- 10. Sun Yellow (Sul-R:1124)
- 11. Poppy (Sul-R:1317)
- 12. Med. Purple (Sul-R:1032)
- 13. Turquoise (Sul-R:1095)
- 14. Black Cherry (Sul-R:1183)
- 15. Bright White (Sul-R:1001)
- 16. Sun Yellow (Sul-R:1124)
- 17. Turquoise (Sul-R:1095)
- 18. Nassau Blue (Sul-R:1242)
- 19. Black Cherry (Sul-R:1183)
- 20. Sunset (Sul-R:621)
- 21. Red Jubilee (Sul-R:1263)

Under-The-Sea-02-5x7.dst
4.95x6.54 inches; 41,273 stitches
21 thread changes; 16 colors



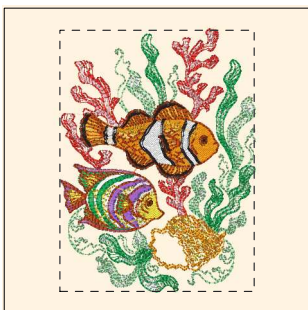
- 1. Sea Mist (Sul-R:1275)
- 2. Willow Green (Sul-R:1279)
- 3. Bright Green (Sul-R:1278)
- 4. Turquoise (Sul-R:1095)
- 5. Sun Yellow (Sul-R:1124)
- 6. Orange Sunrise (Sul-R:1238)
- 7. Cobalt Blue (Sul-R:526)
- 8. (Sul-R:1241)
- 9. Sun Yellow (Sul-R:1124)
- 10. Med. Purple (Sul-R:1032)
- 11. Dk. Orchid (Sul-R:1033)
- 12. Bright Green (Sul-R:1278)
- 13. Bright White (Sul-R:1001)
- 14. Black Cherry (Sul-R:1183)
- 15. Lemon Yellow (Sul-R:1067)
- 16. Bright White (Sul-R:1001)
- 17. Sunset (Sul-R:621)
- 18. Cobalt Blue (Sul-R:526)

Under-The-Sea-03-5x7.dst
5.02x6.43 inches; 42,506 stitches
18 thread changes; 14 colors



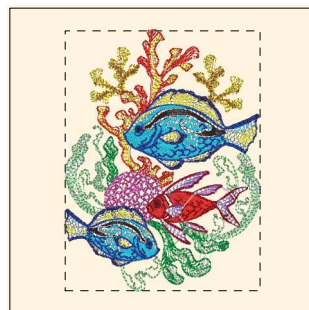
- 1. Sea Mist (Sul-R:1275)
- 2. Willow Green (Sul-R:1279)
- 3. Bright Green (Sul-R:1278)
- 4. Pastel Coral (Sul-R:1016)
- 5. Poppy (Sul-R:1317)
- 6. Pink (Sul-R:1121)
- 7. Hot Pink (Sul-R:1109)
- 8. Bright White (Sul-R:1001)
- 9. Orange Sunrise (Sul-R:1238)
- 10. Sun Yellow (Sul-R:1124)
- 11. Poppy (Sul-R:1317)
- 12. Med. Purple (Sul-R:1032)
- 13. Lemon Yellow (Sul-R:1067)
- 14. Dk. Orchid (Sul-R:1033)
- 15. (Sul-R:1260)
- 16. Black Cherry (Sul-R:1183)
- 17. Red Jubilee (Sul-R:1263)
- 18. Bright White (Sul-R:1001)
- 19. (Sul-R:1260)
- 20. Black Cherry (Sul-R:1183)
- 21. Dk. Orchid (Sul-R:1033)
- 22. Deep Orchid (Sul-R:1255)

Under-The-Sea-04-5x7.dst
5.12x6.94 inches; 37,437 stitches
22 thread changes; 17 colors



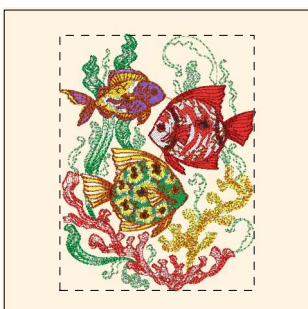
- 1. Sea Mist (Sul-R:1275)
- 2. Willow Green (Sul-R:1279)
- 3. Bright Green (Sul-R:1278)
- 4. Pastel Coral (Sul-R:1016)
- 5. Poppy (Sul-R:1317)
- 6. Orange Sunrise (Sul-R:1238)
- 7. Bright White (Sul-R:1001)
- 8. Sun Yellow (Sul-R:1124)
- 9. (Sul-R:1260)
- 10. Black Cherry (Sul-R:1183)
- 11. Bright Green (Sul-R:1278)
- 12. Med. Purple (Sul-R:1032)
- 13. Sun Yellow (Sul-R:1124)
- 14. Sunset (Sul-R:621)
- 15. Orange Sunrise (Sul-R:1238)
- 16. (Sul-R:1260)
- 17. Black Cherry (Sul-R:1183)

Under-The-Sea-05-5x7.dst
5.01x6.72 inches; 37,893 stitches
17 thread changes; 12 colors



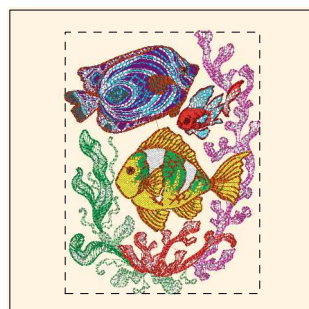
- 1. Sea Mist (Sul-R:1275)
- 2. Willow Green (Sul-R:1279)
- 3. Bright Green (Sul-R:1278)
- 4. Sun Yellow (Sul-R:1124)
- 5. Tan (Sul-R:1126)
- 6. Hot Pink (Sul-R:1109)
- 7. Poppy (Sul-R:1317)
- 8. Bright White (Sul-R:1001)
- 9. Sun Yellow (Sul-R:1124)
- 10. Med. Purple (Sul-R:1032)
- 11. Turquoise (Sul-R:1095)
- 12. Black Cherry (Sul-R:1183)
- 13. Red Jubilee (Sul-R:1263)
- 14. Bright White (Sul-R:1001)
- 15. Cobalt Blue (Sul-R:526)

Under-The-Sea-06-5x7.dst
5.02x6.69 inches; 37,120 stitches
15 thread changes; 13 colors



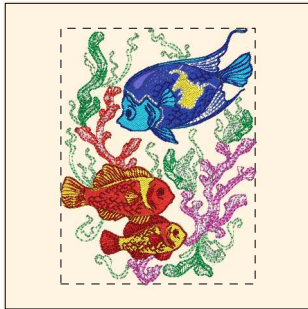
- 1. Sea Mist (Sul-R:1275)
- 2. Willow Green (Sul-R:1279)
- 3. Bright Green (Sul-R:1278)
- 4. Pastel Coral (Sul-R:1016)
- 5. Sun Yellow (Sul-R:1124)
- 6. Poppy (Sul-R:1317)
- 7. Bright Green (Sul-R:1278)
- 8. Bright White (Sul-R:1001)
- 9. Sun Yellow (Sul-R:1124)
- 10. Med. Purple (Sul-R:1032)
- 11. Black Cherry (Sul-R:1183)
- 12. Orange Sunrise (Sul-R:1238)
- 13. Poppy (Sul-R:1317)
- 14. Red Jubilee (Sul-R:1263)
- 15. Bright White (Sul-R:1001)
- 16. Sunset (Sul-R:621)

Under-The-Sea-07-5x7.dst
5.01x6.57 inches; 39,715 stitches
16 thread changes; 12 colors



- 1. Sea Mist (Sul-R:1275)
- 2. Willow Green (Sul-R:1279)
- 3. Bright Green (Sul-R:1278)
- 4. Pink (Sul-R:1121)
- 5. Hot Pink (Sul-R:1109)
- 6. Pastel Coral (Sul-R:1016)
- 7. Poppy (Sul-R:1317)
- 8. Bright White (Sul-R:1001)
- 9. Sun Yellow (Sul-R:1124)
- 10. Bright Green (Sul-R:1278)
- 11. (Sul-R:1241)
- 12. Turquoise (Sul-R:1095)
- 13. Sun Yellow (Sul-R:1124)
- 14. Deep Orchid (Sul-R:1255)
- 15. Black Cherry (Sul-R:1183)
- 16. Red Jubilee (Sul-R:1263)
- 17. Bright White (Sul-R:1001)
- 18. Sun Yellow (Sul-R:1124)
- 19. (Sul-R:1282)
- 20. Sunset (Sul-R:621)
- 21. Turquoise (Sul-R:1095)

Under-The-Sea-08-5x7.dst
5.01x6.74 inches; 39,685 stitches
21 thread changes; 16 colors



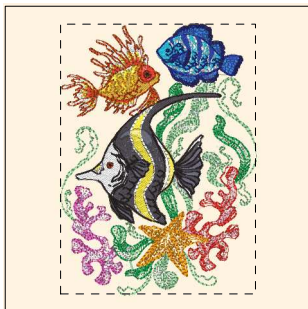
- 1. Sea Mist (Sul-R:1275)
- 2. Willow Green (Sul-R:1279)
- 3. Bright Green (Sul-R:1278)
- 4. Pink (Sul-R:1121)
- 5. Hot Pink (Sul-R:1109)
- 6. Pastel Coral (Sul-R:1016)
- 7. Poppy (Sul-R:1317)
- 8. Cobalt Blue (Sul-R:526)
- 9. Sun Yellow (Sul-R:1124)
- 10. Turquoise (Sul-R:1095)
- 11. Black Cherry (Sul-R:1183)
- 12. Nassau Blue (Sul-R:1242)
- 13. Red Jubilee (Sul-R:1263)
- 14. Bright White (Sul-R:1001)
- 15. Deep Nassau Blue (Sul-R:1293)

Under-The-Sea-09-5x7.dst
 5.00x6.58 inches; 34,010 stitches
 15 thread changes; 15 colors



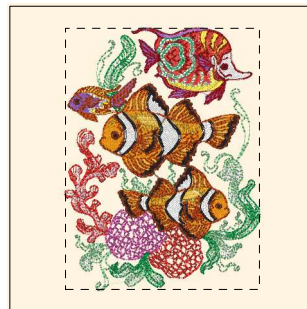
- 1. Sea Mist (Sul-R:1275)
- 2. Willow Green (Sul-R:1279)
- 3. Bright Green (Sul-R:1278)
- 4. Sun Yellow (Sul-R:1124)
- 5. Lavender (Sul-R:1193)
- 6. Lt. Purple (Sul-R:1194)
- 7. Orange Sunrise (Sul-R:1238)
- 8. Cobalt Blue (Sul-R:526)
- 9. Sun Yellow (Sul-R:1124)
- 10. Bright Green (Sul-R:1278)
- 11. (Sul-R:1241)
- 12. Turquoise (Sul-R:1095)
- 13. Black Cherry (Sul-R:1183)
- 14. Lt. Teal (Sul-R:1045)
- 15. Orange Sunrise (Sul-R:1238)
- 16. Black Cherry (Sul-R:1183)
- 17. Sunset (Sul-R:621)
- 18. Bright White (Sul-R:1001)
- 19. Lt. Teal (Sul-R:1045)
- 20. Gun Metal Gray (Sul-R:1306)

Under-The-Sea-10-5x7.dst
 5.00x6.74 inches; 36,071 stitches
 20 thread changes; 15 colors



- 1. Sea Mist (Sul-R:1275)
- 2. Willow Green (Sul-R:1279)
- 3. Bright Green (Sul-R:1278)
- 4. Pink (Sul-R:1121)
- 5. Hot Pink (Sul-R:1109)
- 6. Pastel Coral (Sul-R:1016)
- 7. (Sul-R:1260)
- 8. Poppy (Sul-R:1317)
- 9. Bright White (Sul-R:1001)
- 10. Cobalt Blue (Sul-R:526)
- 11. Sun Yellow (Sul-R:1124)
- 12. (Sul-R:1241)
- 13. Turquoise (Sul-R:1095)
- 14. Gun Metal Gray (Sul-R:1306)
- 15. Pastel Yellow (Sul-R:1135)
- 16. Bright White (Sul-R:1001)
- 17. Orange Sunrise (Sul-R:1238)
- 18. Black Cherry (Sul-R:1183)
- 19. Sun Yellow (Sul-R:1124)
- 20. Sunset (Sul-R:621)
- 21. Royal Blue (Sul-R:1076)
- 22. Deep Nassau Blue (Sul-R:1293)
- 23. Gun Metal Gray (Sul-R:1306)

Under-The-Sea-11-5x7.dst
 5.02x6.95 inches; 40,161 stitches
 23 thread changes; 20 colors



- 1. Sea Mist (Sul-R:1275)
- 2. Willow Green (Sul-R:1279)
- 3. Bright Green (Sul-R:1278)
- 4. Pastel Coral (Sul-R:1016)
- 5. Poppy (Sul-R:1317)
- 6. Hot Pink (Sul-R:1109)
- 7. Orange Sunrise (Sul-R:1238)
- 8. (Sul-R:1260)
- 9. Poppy (Sul-R:1317)
- 10. Bright White (Sul-R:1001)
- 11. Med. Purple (Sul-R:1032)
- 12. Black Cherry (Sul-R:1183)
- 13. Sun Yellow (Sul-R:1124)
- 14. Red Jubilee (Sul-R:1263)
- 15. Bright Green (Sul-R:1278)
- 16. (Sul-R:1260)
- 17. Black Cherry (Sul-R:1183)
- 18. Bright White (Sul-R:1001)
- 19. Sunset (Sul-R:621)

Under-The-Sea-12-5x7.dst
 5.00x6.72 inches; 46,268 stitches
 19 thread changes; 14 colors