



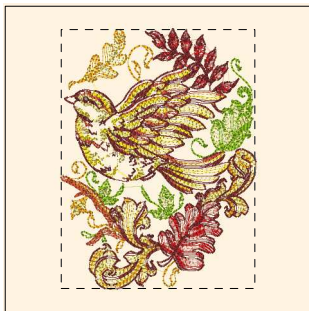
- 1. Peacock Blue (Sul-R:1134)
- 2. Orange Yellow (Sul-R:1065)
- 3. Pastel Yellow (Sul-R:1135)
- 4. Lt. Avocado (Sul-R:1209)
- 5. Avocado (Sul-R:1177)
- 6. Salmon Peach (Sul-R:1259)
- 7. Dk. Sapphire (Sul-R:1253)
- 8. (Sul-R:1319)
- 9. Maple (Sul-R:1021)
- 10. Wine (Sul-R:1312)
- 11. Bright White (Sul-R:1001)

**Baroque-Autumn-01-5x7.dst**  
4.92x6.97 inches; 29,882 stitches  
11 thread changes; 11 colors



- 1. Orange Yellow (Sul-R:1065)
- 2. Pastel Yellow (Sul-R:1135)
- 3. Lt. Avocado (Sul-R:1209)
- 4. Avocado (Sul-R:1177)
- 5. Salmon Peach (Sul-R:1259)
- 6. (Sul-R:1319)
- 7. Maple (Sul-R:1021)
- 8. Orange Sunrise (Sul-R:1238)
- 9. Wine (Sul-R:1312)
- 10. Bright White (Sul-R:1001)

**Baroque-Autumn-02-5x7.dst**  
4.99x6.91 inches; 27,830 stitches  
10 thread changes; 10 colors



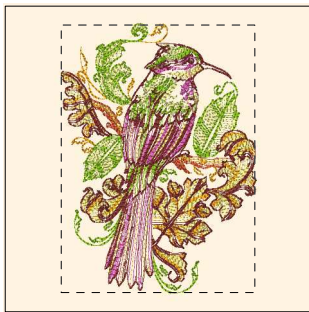
- 1. Orange Yellow (Sul-R:1065)
- 2. Pastel Yellow (Sul-R:1135)
- 3. Lt. Avocado (Sul-R:1209)
- 4. Avocado (Sul-R:1177)
- 5. Salmon Peach (Sul-R:1259)
- 6. (Sul-R:1319)
- 7. Maple (Sul-R:1021)
- 8. Yellow (Sul-R:1023)
- 9. Lipstick (Sul-R:561)
- 10. Wine (Sul-R:1312)
- 11. Bright White (Sul-R:1001)

**Baroque-Autumn-03-5x7.dst**  
4.99x6.67 inches; 28,081 stitches  
11 thread changes; 11 colors



- 1. Peacock Blue (Sul-R:1134)
- 2. Orange Yellow (Sul-R:1065)
- 3. Pastel Yellow (Sul-R:1135)
- 4. Avocado (Sul-R:1177)
- 5. Salmon Peach (Sul-R:1259)
- 6. Dk. Sapphire (Sul-R:1253)
- 7. Lt. Avocado (Sul-R:1209)
- 8. (Sul-R:1319)
- 9. Maple (Sul-R:1021)
- 10. Yellow (Sul-R:1023)
- 11. Dk. Whisper Gray (Sul-R:1327)
- 12. Lt. Teal (Sul-R:1045)
- 13. Wine (Sul-R:1312)
- 14. Bright White (Sul-R:1001)

**Baroque-Autumn-04-5x7.dst**  
5.00x6.93 inches; 30,910 stitches  
14 thread changes; 14 colors



- 1. Orange Yellow (Sul-R:1065)
- 2. Pastel Yellow (Sul-R:1135)
- 3. Lt. Avocado (Sul-R:1209)
- 4. Avocado (Sul-R:1177)
- 5. Maple (Sul-R:1021)
- 6. Hot Pink (Sul-R:1109)
- 7. Wine (Sul-R:1312)
- 8. Bright White (Sul-R:1001)

**Baroque-Autumn-05-5x7.dst**  
4.99x6.89 inches; 27,194 stitches  
8 thread changes; 8 colors



- 1. Peacock Blue (Sul-R:1134)
- 2. Orange Yellow (Sul-R:1065)
- 3. Pastel Yellow (Sul-R:1135)
- 4. Lt. Avocado (Sul-R:1209)
- 5. Avocado (Sul-R:1177)
- 6. Salmon Peach (Sul-R:1259)
- 7. (Sul-R:1319)
- 8. Maple (Sul-R:1021)
- 9. Yellow (Sul-R:1023)
- 10. Lt. Purple (Sul-R:1194)
- 11. Orchid (Sul-R:1080)
- 12. Wine (Sul-R:1312)
- 13. Bright White (Sul-R:1001)

**Baroque-Autumn-06-5x7.dst**  
5.00x6.94 inches; 26,005 stitches  
13 thread changes; 13 colors



- 1. Orange Yellow (Sul-R:1065)
- 2. Pastel Yellow (Sul-R:1135)
- 3. Lt. Avocado (Sul-R:1209)
- 4. Avocado (Sul-R:1177)
- 5. Salmon Peach (Sul-R:1259)
- 6. (Sul-R:1319)
- 7. Maple (Sul-R:1021)
- 8. Lt. Purple (Sul-R:1194)
- 9. Deep Aqua (Sul-R:571)
- 10. Wine (Sul-R:1312)
- 11. Bright White (Sul-R:1001)

**Baroque-Autumn-07-5x7.dst**  
5.00x6.72 inches; 27,880 stitches  
11 thread changes; 11 colors



- 1. Orange Yellow (Sul-R:1065)
- 2. Pastel Yellow (Sul-R:1135)
- 3. Lt. Avocado (Sul-R:1209)
- 4. Avocado (Sul-R:1177)
- 5. Maple (Sul-R:1021)
- 6. Yellow (Sul-R:1023)
- 7. Wine (Sul-R:1312)
- 8. Bright White (Sul-R:1001)

**Baroque-Autumn-08-5x7.dst**  
4.99x6.87 inches; 25,465 stitches  
8 thread changes; 8 colors



- 1. Orange Yellow (Sul-R:1065)
- 2. Pastel Yellow (Sul-R:1135)
- 3. Lt. Avocado (Sul-R:1209)
- 4. Avocado (Sul-R:1177)
- 5. Salmon Peach (Sul-R:1259)
- 6. (Sul-R:1319)
- 7. Maple (Sul-R:1021)
- 8. Lt. Purple (Sul-R:1194)
- 9. Bright White (Sul-R:1001)
- 10. Wine (Sul-R:1312)

**Baroque-Autumn-09-5x7.dst**

4.45x6.99 inches; 27,835 stitches  
10 thread changes; 10 colors



- 1. Orange Yellow (Sul-R:1065)
- 2. Pastel Yellow (Sul-R:1135)
- 3. Avocado (Sul-R:1177)
- 4. Salmon Peach (Sul-R:1259)
- 5. Lt. Avocado (Sul-R:1209)
- 6. (Sul-R:1319)
- 7. Maple (Sul-R:1021)
- 8. Charcoal Gray (Sul-R:1220)
- 9. Wine (Sul-R:1312)
- 10. Bright White (Sul-R:1001)

**Baroque-Autumn-10-5x7.dst**

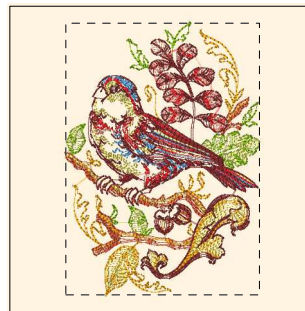
5.00x6.87 inches; 29,399 stitches  
10 thread changes; 10 colors



- 1. Orange Yellow (Sul-R:1065)
- 2. Pastel Yellow (Sul-R:1135)
- 3. Lt. Avocado (Sul-R:1209)
- 4. Avocado (Sul-R:1177)
- 5. Salmon Peach (Sul-R:1259)
- 6. (Sul-R:1319)
- 7. Maple (Sul-R:1021)
- 8. Lt. Purple (Sul-R:1194)
- 9. Orchid (Sul-R:1080)
- 10. Deep Aqua (Sul-R:571)
- 11. Wine (Sul-R:1312)
- 12. Bright White (Sul-R:1001)

**Baroque-Autumn-11-5x7.dst**

5.00x6.63 inches; 25,229 stitches  
12 thread changes; 12 colors



- 1. Peacock Blue (Sul-R:1134)
- 2. Orange Yellow (Sul-R:1065)
- 3. Pastel Yellow (Sul-R:1135)
- 4. Avocado (Sul-R:1177)
- 5. Salmon Peach (Sul-R:1259)
- 6. Lt. Avocado (Sul-R:1209)
- 7. (Sul-R:1319)
- 8. Maple (Sul-R:1021)
- 9. Wine (Sul-R:1312)
- 10. Bright White (Sul-R:1001)

**Baroque-Autumn-12-5x7.dst**

4.98x7.00 inches; 24,267 stitches  
10 thread changes; 10 colors