



- 1. Avocado (Sul-R:1177)
- 2. Mint Green (Sul-R:1047)
- 3. Ivy Green (Sul-R:1277)
- 4. Xmas Green (Sul-R:1051)
- 5. Blackberry (Sul-R:1215)
- 6. Bright White (Sul-R:1001)
- 7. Apricot (Sul-R:1239)
- 8. (Sul-R:1241)
- 9. (Sul-R:1260)
- 10. Med. Taupe (Sul-R:1180)
- 11. Blackberry (Sul-R:1215)
- 12. Med. Steel Gray (Sul-R:1166)
- 13. Silver Gray (Sul-R:1218)
- 14. Cinnamon (Sul-R:568)
- 15. Cornsilk (Sul-R:502)
- 16. Sunflower Gold (Sul-R:1333)
- 17. Tawny Tan (Sul-R:1055)
- 18. Dk. Maple (Sul-R:1158)

**Autumn-Critters-01-5x7.dst**  
 4.96x6.59 inches; 47,331 stitches  
 18 thread changes; 17 colors



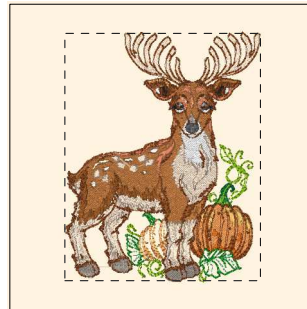
- 1. Avocado (Sul-R:1177)
- 2. Mint Green (Sul-R:1047)
- 3. Ivy Green (Sul-R:1277)
- 4. Xmas Green (Sul-R:1051)
- 5. Sun Yellow (Sul-R:1124)
- 6. Black Cherry (Sul-R:1183)
- 7. Bright White (Sul-R:1001)
- 8. Apricot (Sul-R:1239)
- 9. Deep Ecu (Sul-R:1149)
- 10. Steel Gray (Sul-R:1011)
- 11. Med. Taupe (Sul-R:1180)
- 12. Black Cherry (Sul-R:1183)
- 13. Cinnamon (Sul-R:568)
- 14. Cornsilk (Sul-R:502)
- 15. Team Blue (Sul-R:1535)
- 16. Med. Blue (Sul-R:1029)
- 17. Charcoal Gray (Sul-R:1220)
- 18. Black Cherry (Sul-R:1183)
- 19. Dark Brown (Sul-R:1130)
- 20. Dk. Maple (Sul-R:1158)

**Autumn-Critters-02-5x7.dst**  
 4.88x6.99 inches; 46,840 stitches  
 20 thread changes; 18 colors



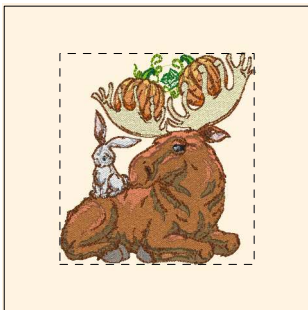
- 1. Avocado (Sul-R:1177)
- 2. Mint Green (Sul-R:1047)
- 3. Ivy Green (Sul-R:1277)
- 4. Xmas Green (Sul-R:1051)
- 5. Black Cherry (Sul-R:1183)
- 6. Bright White (Sul-R:1001)
- 7. Apricot (Sul-R:1239)
- 8. Med. Taupe (Sul-R:1180)
- 9. Black Cherry (Sul-R:1183)
- 10. (Sul-R:622)
- 11. Bittersweet (Sul-R:1313)
- 12. Tan (Sul-R:1126)
- 13. Pale Yellow (Sul-R:1061)
- 14. Cinnamon (Sul-R:568)
- 15. Cornsilk (Sul-R:502)
- 16. Maize Yellow (Sul-R:1167)
- 17. (Sul-R:1243)
- 18. Nutmeg (Sul-R:521)
- 19. Dk. Maple (Sul-R:1158)

**Autumn-Critters-03-5x7.dst**  
 5.00x6.50 inches; 46,243 stitches  
 19 thread changes; 18 colors



- 1. Black Cherry (Sul-R:1183)
- 2. Bright White (Sul-R:1001)
- 3. Apricot (Sul-R:1239)
- 4. Med. Taupe (Sul-R:1180)
- 5. Tan (Sul-R:1126)
- 6. Coral Reef (Sul-R:1258)
- 7. Deep Ecu (Sul-R:1149)
- 8. Avocado (Sul-R:1177)
- 9. Black Cherry (Sul-R:1183)
- 10. Med. Steel Gray (Sul-R:1166)
- 11. Cinnamon (Sul-R:568)
- 12. Cornsilk (Sul-R:502)
- 13. Bittersweet (Sul-R:1313)
- 14. (Sul-R:1320)
- 15. Mint Green (Sul-R:1047)
- 16. Ivy Green (Sul-R:1277)
- 17. Xmas Green (Sul-R:1051)
- 18. Dk. Maple (Sul-R:1158)

**Autumn-Critters-04-5x7.dst**  
 5.04x6.37 inches; 42,034 stitches  
 18 thread changes; 17 colors



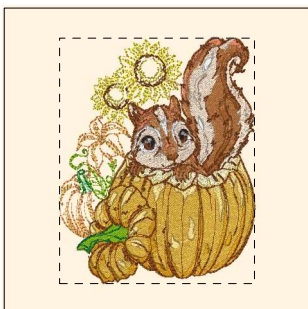
- 1. Avocado (Sul-R:1177)
- 2. Mint Green (Sul-R:1047)
- 3. Ivy Green (Sul-R:1277)
- 4. Xmas Green (Sul-R:1051)
- 5. Apricot (Sul-R:1239)
- 6. Med. Taupe (Sul-R:1180)
- 7. Tan (Sul-R:1126)
- 8. Pale Yellow (Sul-R:1061)
- 9. Bittersweet (Sul-R:1313)
- 10. Burnt Toast (Sul-R:1265)
- 11. Black Cherry (Sul-R:1183)
- 12. Bright White (Sul-R:1001)
- 13. Med. Steel Gray (Sul-R:1166)
- 14. Silver Gray (Sul-R:1218)
- 15. Cinnamon (Sul-R:568)
- 16. Cornsilk (Sul-R:502)
- 17. Steel Gray (Sul-R:1011)
- 18. Pastel Mauve (Sul-R:1113)
- 19. Dk. Maple (Sul-R:1158)

**Autumn-Critters-05-5x7.dst**  
 5.01x5.43 inches; 42,311 stitches  
 19 thread changes; 19 colors



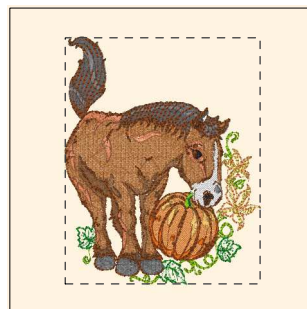
- 1. Avocado (Sul-R:1177)
- 2. Mint Green (Sul-R:1047)
- 3. Ivy Green (Sul-R:1277)
- 4. Xmas Green (Sul-R:1051)
- 5. Black Cherry (Sul-R:1183)
- 6. Bright White (Sul-R:1001)
- 7. (Sul-R:1260)
- 8. Silver Gray (Sul-R:1218)
- 9. Tan (Sul-R:1126)
- 10. Apricot (Sul-R:1239)
- 11. Med. Taupe (Sul-R:1180)
- 12. Black Cherry (Sul-R:1183)
- 13. Cornsilk (Sul-R:502)
- 14. Sunflower Gold (Sul-R:1333)
- 15. Tawny Tan (Sul-R:1055)
- 16. Maize Yellow (Sul-R:1167)
- 17. (Sul-R:1243)
- 18. (Sul-R:520)
- 19. Dk. Maple (Sul-R:1158)

**Autumn-Critters-06-5x7.dst**  
 4.96x7.00 inches; 49,206 stitches  
 19 thread changes; 18 colors



- 1. (Sul-R:1260)
- 2. Avocado (Sul-R:1177)
- 3. Black Cherry (Sul-R:1183)
- 4. Sunflower Gold (Sul-R:1333)
- 5. Tan (Sul-R:1126)
- 6. Coral Reef (Sul-R:1258)
- 7. Pale Yellow (Sul-R:1061)
- 8. Bright White (Sul-R:1001)
- 9. Tawny Tan (Sul-R:1055)
- 10. Deep Ecu (Sul-R:1149)
- 11. Bittersweet (Sul-R:1313)
- 12. (Sul-R:1320)
- 13. Apricot (Sul-R:1239)
- 14. Cornsilk (Sul-R:502)
- 15. Mint Green (Sul-R:1047)
- 16. Ivy Green (Sul-R:1277)
- 17. Xmas Green (Sul-R:1051)
- 18. Sun Yellow (Sul-R:1124)
- 19. Dk. Maple (Sul-R:1158)

**Autumn-Critters-07-5x7.dst**  
 5.02x6.31 inches; 48,952 stitches  
 19 thread changes; 19 colors



- 1. Avocado (Sul-R:1177)
- 2. Mint Green (Sul-R:1047)
- 3. Ivy Green (Sul-R:1277)
- 4. Xmas Green (Sul-R:1051)
- 5. Bright White (Sul-R:1001)
- 6. Apricot (Sul-R:1239)
- 7. Tan (Sul-R:1126)
- 8. Nutmeg (Sul-R:521)
- 9. Med. Steel Gray (Sul-R:1166)
- 10. Black Cherry (Sul-R:1183)
- 11. Cinnamon (Sul-R:568)
- 12. Cornsilk (Sul-R:502)
- 13. Bittersweet (Sul-R:1313)
- 14. Gray (Sul-R:1219)
- 15. Maize Yellow (Sul-R:1167)
- 16. Dk. Maple (Sul-R:1158)

**Autumn-Critters-08-5x7.dst**  
 5.02x6.33 inches; 37,770 stitches  
 16 thread changes; 16 colors



- 1. Avocado (Sul-R:1177)
- 2. Mint Green (Sul-R:1047)
- 3. Ivy Green (Sul-R:1277)
- 4. Xmas Green (Sul-R:1051)
- 5. Black Cherry (Sul-R:1183)
- 6. Bright White (Sul-R:1001)
- 7. Apricot (Sul-R:1239)
- 8. (Sul-R:1241)
- 9. (Sul-R:1260)
- 10. Cornsilk (Sul-R:502)
- 11. Pastel Mauve (Sul-R:1113)
- 12. Med. Taupe (Sul-R:1180)
- 13. Black Cherry (Sul-R:1183)
- 14. Med. Steel Gray (Sul-R:1166)
- 15. Silver Gray (Sul-R:1218)
- 16. Cinnamon (Sul-R:568)
- 17. Sunflower Gold (Sul-R:1333)
- 18. Tawny Tan (Sul-R:1055)
- 19. Dk. Maple (Sul-R:1158)

**Autumn-Critters-09-5x7.dst**  
 5.00x6.32 inches; 39,886 stitches  
 19 thread changes; 18 colors



- 1. Mint Green (Sul-R:1047)
- 2. Sea Mist (Sul-R:1275)
- 3. Ivy Green (Sul-R:1277)
- 4. Xmas Green (Sul-R:1051)
- 5. Avocado (Sul-R:1177)
- 6. Black Cherry (Sul-R:1183)
- 7. Apricot (Sul-R:1239)
- 8. Tan (Sul-R:1126)
- 9. Coral Reef (Sul-R:1258)
- 10. Bright White (Sul-R:1001)
- 11. Black Cherry (Sul-R:1183)
- 12. Pastel Mauve (Sul-R:1113)
- 13. Cornsilk (Sul-R:502)
- 14. Cinnamon (Sul-R:568)
- 15. (Sul-R:1320)
- 16. Deep Ecru (Sul-R:1149)
- 17. Bittersweet (Sul-R:1313)
- 18. Dk. Maple (Sul-R:1158)

**Autumn-Critters-10-5x7.dst**  
 5.02x5.79 inches; 36,716 stitches  
 18 thread changes; 17 colors



- 1. Mint Green (Sul-R:1047)
- 2. Ivy Green (Sul-R:1277)
- 3. Avocado (Sul-R:1177)
- 4. Ivy Green (Sul-R:1277)
- 5. Black Cherry (Sul-R:1183)
- 6. Bright White (Sul-R:1001)
- 7. Apricot (Sul-R:1239)
- 8. (Sul-R:1260)
- 9. Charcoal Gray (Sul-R:1220)
- 10. (Sul-R:1241)
- 11. Pale Yellow (Sul-R:1061)
- 12. Tawny Tan (Sul-R:1055)
- 13. Deep Ecru (Sul-R:1149)
- 14. Black Cherry (Sul-R:1183)
- 15. Cornsilk (Sul-R:502)
- 16. Cinnamon (Sul-R:568)
- 17. Team Blue (Sul-R:1535)
- 18. Med. Blue (Sul-R:1029)
- 19. Steel Gray (Sul-R:1011)
- 20. Med. Taupe (Sul-R:1180)
- 21. Sunflower Gold (Sul-R:1333)
- 22. Dark Brown (Sul-R:1130)
- 23. Dk. Maple (Sul-R:1158)

**Autumn-Critters-11-5x7.dst**  
 5.04x5.90 inches; 55,009 stitches  
 23 thread changes; 21 colors



- 1. Apricot (Sul-R:1239)
- 2. Pastel Mauve (Sul-R:1113)
- 3. Deep Ecru (Sul-R:1149)
- 4. Med. Steel Gray (Sul-R:1166)
- 5. Tan (Sul-R:1126)
- 6. Bittersweet (Sul-R:1313)
- 7. Black Cherry (Sul-R:1183)
- 8. Bright White (Sul-R:1001)
- 9. Avocado (Sul-R:1177)
- 10. Cornsilk (Sul-R:502)
- 11. Cinnamon (Sul-R:568)
- 12. Med. Taupe (Sul-R:1180)
- 13. Cream (Sul-R:1022)
- 14. Nutmeg (Sul-R:521)
- 15. Mint Green (Sul-R:1047)
- 16. Ivy Green (Sul-R:1277)
- 17. Xmas Green (Sul-R:1051)
- 18. Dk. Maple (Sul-R:1158)

**Autumn-Critters-12-5x7.dst**  
 5.00x6.70 inches; 45,983 stitches  
 18 thread changes; 18 colors