



- 1. Bright White (Sul-R:1001)
- 2. (Sul-R:1260)
- 3. Khaki (Sul-R:1212)
- 4. Rust (Sul-R:1181)
- 5. Dk. Maple (Sul-R:1158)
- 6. Cognac (Sul-R:1264)
- 7. Sunset (Sul-R:621)

Vintage-Santas-Workshop-01-4x4.dst

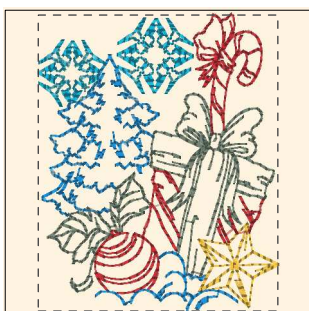
3.84x3.84 inches; 5,743 stitches
7 thread changes; 7 colors



- 1. Bright White (Sul-R:1001)
- 2. (Sul-R:1260)
- 3. Khaki (Sul-R:1212)
- 4. Rust (Sul-R:1181)
- 5. Cognac (Sul-R:1264)
- 6. Sunset (Sul-R:621)

Vintage-Santas-Workshop-02-4x4.dst

3.85x3.50 inches; 5,907 stitches
6 thread changes; 6 colors



- 1. (Sul-R:1260)
- 2. Khaki (Sul-R:1212)
- 3. Rust (Sul-R:1181)
- 4. Sapphire (Sul-R:1534)
- 5. Med. Turquoise (Sul-R:1094)

Vintage-Santas-Workshop-03-4x4.dst

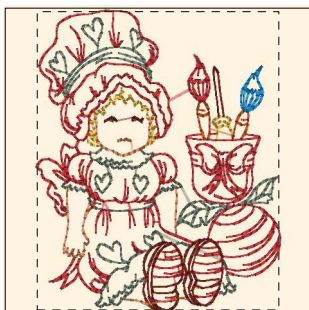
3.09x3.81 inches; 6,838 stitches
5 thread changes; 5 colors



- 1. (Sul-R:1260)
- 2. Khaki (Sul-R:1212)
- 3. Rust (Sul-R:1181)
- 4. Sapphire (Sul-R:1534)
- 5. Med. Turquoise (Sul-R:1094)
- 6. Lt. Putty (Sul-R:1229)
- 7. Lt. Purple (Sul-R:1194)

Vintage-Santas-Workshop-04-4x4.dst

3.46x3.85 inches; 7,269 stitches
7 thread changes; 7 colors



- 1. (Sul-R:1260)
- 2. Khaki (Sul-R:1212)
- 3. Rust (Sul-R:1181)
- 4. Sapphire (Sul-R:1534)
- 5. Cognac (Sul-R:1264)
- 6. Sunset (Sul-R:621)
- 7. Bittersweet (Sul-R:1313)

Vintage-Santas-Workshop-05-4x4.dst

3.12x3.85 inches; 6,610 stitches
7 thread changes; 7 colors



- 1. (Sul-R:1260)
- 2. Khaki (Sul-R:1212)
- 3. Rust (Sul-R:1181)
- 4. Cognac (Sul-R:1264)
- 5. Med. Turquoise (Sul-R:1094)
- 6. Sunset (Sul-R:621)
- 7. Lt. Putty (Sul-R:1229)
- 8. Lt. Purple (Sul-R:1194)

Vintage-Santas-Workshop-06-4x4.dst

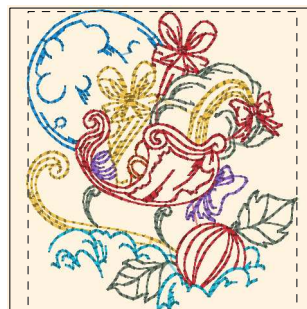
3.71x3.85 inches; 7,508 stitches
8 thread changes; 8 colors



- 1. Bright White (Sul-R:1001)
- 2. Rust (Sul-R:1181)
- 3. Khaki (Sul-R:1212)
- 4. Cognac (Sul-R:1264)
- 5. (Sul-R:1260)
- 6. Sunset (Sul-R:621)
- 7. Cognac (Sul-R:1264)

Vintage-Santas-Workshop-07-4x4.dst

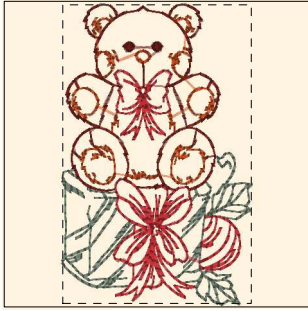
3.78x3.84 inches; 6,993 stitches
7 thread changes; 6 colors



- 1. (Sul-R:1260)
- 2. Khaki (Sul-R:1212)
- 3. Rust (Sul-R:1181)
- 4. Med. Turquoise (Sul-R:1094)
- 5. Sunset (Sul-R:621)
- 6. Sapphire (Sul-R:1534)
- 7. Lt. Purple (Sul-R:1194)

Vintage-Santas-Workshop-08-4x4.dst

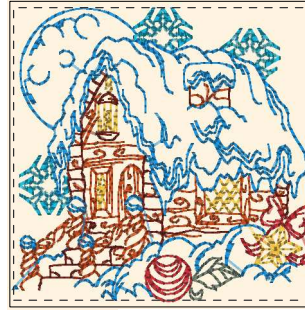
3.46x3.85 inches; 6,336 stitches
7 thread changes; 7 colors



- 1. Bright White (Sul-R:1001)
- 2. Khaki (Sul-R:1212)
- 3. Rust (Sul-R:1181)
- 4. Cognac (Sul-R:1264)
- 5. Sunset (Sul-R:621)

Vintage-Santas-Workshop-09-4x4.dst

2.43x3.85 inches; 5,275 stitches
5 thread changes; 5 colors



- 1. (Sul-R:1260)
- 2. Khaki (Sul-R:1212)
- 3. Rust (Sul-R:1181)
- 4. Med. Turquoise (Sul-R:1094)
- 5. Sunset (Sul-R:621)
- 6. Sapphire (Sul-R:1534)
- 7. Cognac (Sul-R:1264)

Vintage-Santas-Workshop-10-4x4.dst

3.84x3.77 inches; 10,215 stitches
7 thread changes; 7 colors



- 1. (Sul-R:1260)
- 2. Khaki (Sul-R:1212)
- 3. Rust (Sul-R:1181)
- 4. Cognac (Sul-R:1264)
- 5. Sunset (Sul-R:621)
- 6. Lt. Putty (Sul-R:1229)
- 7. Deep Ecru (Sul-R:1149)

Vintage-Santas-Workshop-11-4x4.dst

3.84x3.79 inches; 8,047 stitches
7 thread changes; 7 colors



- 1. Cognac (Sul-R:1264)
- 2. Bright White (Sul-R:1001)
- 3. (Sul-R:1260)
- 4. Khaki (Sul-R:1212)
- 5. Rust (Sul-R:1181)
- 6. Cognac (Sul-R:1264)
- 7. Sunset (Sul-R:621)

Vintage-Santas-Workshop-12-4x4.dst

2.97x3.85 inches; 4,939 stitches
7 thread changes; 6 colors