



- 1. Bright White (Sul-R:1001)
- 2. Nutmeg (Sul-R:521)
- 3. Med. Maple (Sul-R:1216)
- 4. (Sul-R:520)
- 5. Tan (Sul-R:1126)
- 6. Coral Reef (Sul-R:1258)
- 7. (Sul-R:1260)
- 8. Med. Weathered Blue (Sul-R:1172)
- 9. Dusty Peach (Sul-R:619)
- 10. Silver (Sul-R:1085)
- 11. Khaki (Sul-R:1212)
- 12. Putty (Sul-R:1508)
- 13. Sunset (Sul-R:621)
- 14. Cognac (Sul-R:1264)

**Away-In-The-Manger-01-5x7.dst**  
5.02x6.86 inches; 52,267 stitches  
14 thread changes; 14 colors



- 1. Bright White (Sul-R:1001)
- 2. Nutmeg (Sul-R:521)
- 3. Med. Maple (Sul-R:1216)
- 4. Coral Reef (Sul-R:1258)
- 5. Med. Weathered Blue (Sul-R:1172)
- 6. (Sul-R:1314)
- 7. Med. Turquoise (Sul-R:1094)
- 8. Tan (Sul-R:1126)
- 9. (Sul-R:1260)
- 10. Dusty Peach (Sul-R:619)
- 11. Silver (Sul-R:1085)
- 12. Khaki (Sul-R:1212)
- 13. Putty (Sul-R:1508)
- 14. Sunset (Sul-R:621)
- 15. Bittersweet (Sul-R:1313)
- 16. Avocado (Sul-R:1177)
- 17. Cognac (Sul-R:1264)

**Away-In-The-Manger-02-5x7.dst**  
5.00x6.97 inches; 41,261 stitches  
17 thread changes; 17 colors



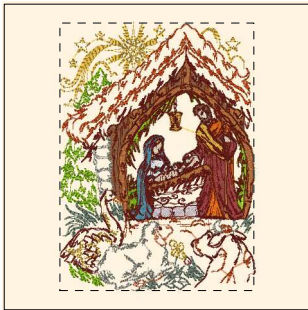
- 1. Bright White (Sul-R:1001)
- 2. Nutmeg (Sul-R:521)
- 3. Tan (Sul-R:1126)
- 4. Coral Reef (Sul-R:1258)
- 5. Silver (Sul-R:1085)
- 6. (Sul-R:1314)
- 7. Med. Maple (Sul-R:1216)
- 8. (Sul-R:1260)
- 9. Med. Weathered Blue (Sul-R:1172)
- 10. Khaki (Sul-R:1212)
- 11. Putty (Sul-R:1508)
- 12. Sunset (Sul-R:621)
- 13. Bittersweet (Sul-R:1313)
- 14. Avocado (Sul-R:1177)
- 15. Cognac (Sul-R:1264)

**Away-In-The-Manger-03-5x7.dst**  
5.00x6.93 inches; 43,040 stitches  
15 thread changes; 15 colors



- 1. Bright White (Sul-R:1001)
- 2. (Sul-R:520)
- 3. Coral Reef (Sul-R:1258)
- 4. (Sul-R:1260)
- 5. Med. Weathered Blue (Sul-R:1172)
- 6. (Sul-R:1314)
- 7. Nutmeg (Sul-R:521)
- 8. Dusty Peach (Sul-R:619)
- 9. Silver (Sul-R:1085)
- 10. Khaki (Sul-R:1212)
- 11. Putty (Sul-R:1508)
- 12. Sunset (Sul-R:621)
- 13. Bittersweet (Sul-R:1313)
- 14. Avocado (Sul-R:1177)
- 15. Cognac (Sul-R:1264)

**Away-In-The-Manger-04-5x7.dst**  
4.99x6.91 inches; 37,838 stitches  
15 thread changes; 15 colors



- 1. Bright White (Sul-R:1001)
- 2. Nutmeg (Sul-R:521)
- 3. Med. Maple (Sul-R:1216)
- 4. (Sul-R:520)
- 5. Tan (Sul-R:1126)
- 6. Coral Reef (Sul-R:1258)
- 7. (Sul-R:1260)
- 8. Med. Weathered Blue (Sul-R:1172)
- 9. Silver (Sul-R:1085)
- 10. (Sul-R:1314)
- 11. Avocado (Sul-R:1177)
- 12. Sunset (Sul-R:621)
- 13. Khaki (Sul-R:1212)
- 14. Putty (Sul-R:1508)
- 15. Bittersweet (Sul-R:1313)
- 16. Putty (Sul-R:1508)
- 17. Cognac (Sul-R:1264)

**Away-In-The-Manger-05-5x7.dst**  
5.00x6.89 inches; 41,363 stitches  
17 thread changes; 16 colors



- 1. Bright White (Sul-R:1001)
- 2. Nutmeg (Sul-R:521)
- 3. (Sul-R:520)
- 4. Tan (Sul-R:1126)
- 5. Silver (Sul-R:1085)
- 6. Pink Tint (Sul-R:1068)
- 7. (Sul-R:1314)
- 8. Dark Brown (Sul-R:1130)
- 9. (Sul-R:1260)
- 10. Khaki (Sul-R:1212)
- 11. Putty (Sul-R:1508)
- 12. Sunset (Sul-R:621)
- 13. Avocado (Sul-R:1177)
- 14. Rust (Sul-R:1181)
- 15. Cognac (Sul-R:1264)

**Away-In-The-Manger-06-5x7.dst**  
4.99x6.85 inches; 37,697 stitches  
15 thread changes; 15 colors



- 1. Bright White (Sul-R:1001)
- 2. Nutmeg (Sul-R:521)
- 3. Med. Maple (Sul-R:1216)
- 4. (Sul-R:520)
- 5. Tan (Sul-R:1126)
- 6. (Sul-R:1260)
- 7. Med. Weathered Blue (Sul-R:1172)
- 8. (Sul-R:1314)
- 9. Pink Tint (Sul-R:1068)
- 10. Dusty Peach (Sul-R:619)
- 11. Silver (Sul-R:1085)
- 12. Khaki (Sul-R:1212)
- 13. Putty (Sul-R:1508)
- 14. Sunset (Sul-R:621)
- 15. Avocado (Sul-R:1177)
- 16. Rust (Sul-R:1181)
- 17. Cognac (Sul-R:1264)

**Away-In-The-Manger-07-5x7.dst**  
5.02x6.90 inches; 42,908 stitches  
17 thread changes; 17 colors



- 1. Bright White (Sul-R:1001)
- 2. Nutmeg (Sul-R:521)
- 3. Med. Maple (Sul-R:1216)
- 4. (Sul-R:1260)
- 5. (Sul-R:1314)
- 6. Pink Tint (Sul-R:1068)
- 7. Silver (Sul-R:1085)
- 8. Khaki (Sul-R:1212)
- 9. Putty (Sul-R:1508)
- 10. Sunset (Sul-R:621)
- 11. Avocado (Sul-R:1177)
- 12. Cognac (Sul-R:1264)

**Away-In-The-Manger-08-5x7.dst**  
5.00x6.84 inches; 35,134 stitches  
12 thread changes; 12 colors



- 1. Med. Maple (Sul-R:1216)
- 2. (Sul-R:520)
- 3. Tan (Sul-R:1126)
- 4. (Sul-R:1314)
- 5. Pink Tint (Sul-R:1068)
- 6. Bright White (Sul-R:1001)
- 7. Nutmeg (Sul-R:521)
- 8. (Sul-R:1260)
- 9. Med. Weathered Blue (Sul-R:1172)
- 10. Khaki (Sul-R:1212)
- 11. Putty (Sul-R:1508)
- 12. Sunset (Sul-R:621)
- 13. Bittersweet (Sul-R:1313)
- 14. Avocado (Sul-R:1177)
- 15. Rust (Sul-R:1181)
- 16. Cognac (Sul-R:1264)

**Away-In-The-Manger-09-5x7.dst**  
 4.99x6.94 inches; 32,422 stitches  
 16 thread changes; 16 colors



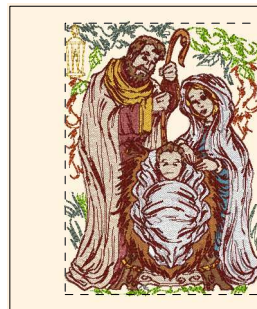
- 1. Bright White (Sul-R:1001)
- 2. Nutmeg (Sul-R:521)
- 3. (Sul-R:520)
- 4. Tan (Sul-R:1126)
- 5. (Sul-R:1260)
- 6. Silver (Sul-R:1085)
- 7. Pink Tint (Sul-R:1068)
- 8. Med. Weathered Blue (Sul-R:1172)
- 9. Khaki (Sul-R:1212)
- 10. Evergreen (Sul-R:1271)
- 11. Sunset (Sul-R:621)
- 12. Med. Maple (Sul-R:1216)
- 13. Putty (Sul-R:1508)
- 14. Bittersweet (Sul-R:1313)
- 15. (Sul-R:1314)
- 16. Avocado (Sul-R:1177)
- 17. Rust (Sul-R:1181)
- 18. Dark Brown (Sul-R:1130)
- 19. Cognac (Sul-R:1264)

**Away-In-The-Manger-10-5x7.dst**  
 5.00x6.91 inches; 50,385 stitches  
 19 thread changes; 19 colors



- 1. Bright White (Sul-R:1001)
- 2. (Sul-R:520)
- 3. (Sul-R:1260)
- 4. Med. Weathered Blue (Sul-R:1172)
- 5. (Sul-R:1314)
- 6. Pink Tint (Sul-R:1068)
- 7. Nutmeg (Sul-R:521)
- 8. Tan (Sul-R:1126)
- 9. Dusty Peach (Sul-R:619)
- 10. Silver (Sul-R:1085)
- 11. Khaki (Sul-R:1212)
- 12. Putty (Sul-R:1508)
- 13. Sunset (Sul-R:621)
- 14. Bittersweet (Sul-R:1313)
- 15. Avocado (Sul-R:1177)
- 16. Cognac (Sul-R:1264)

**Away-In-The-Manger-11-5x7.dst**  
 5.00x6.80 inches; 44,484 stitches  
 16 thread changes; 16 colors



- 1. Bright White (Sul-R:1001)
- 2. Nutmeg (Sul-R:521)
- 3. Med. Maple (Sul-R:1216)
- 4. (Sul-R:520)
- 5. Tan (Sul-R:1126)
- 6. Coral Reef (Sul-R:1258)
- 7. (Sul-R:1260)
- 8. Med. Weathered Blue (Sul-R:1172)
- 9. Silver (Sul-R:1085)
- 10. Dusty Peach (Sul-R:619)
- 11. Khaki (Sul-R:1212)
- 12. Putty (Sul-R:1508)
- 13. Sunset (Sul-R:621)
- 14. Avocado (Sul-R:1177)
- 15. Cognac (Sul-R:1264)

**Away-In-The-Manger-12-5x7.dst**  
 5.02x6.99 inches; 61,369 stitches  
 15 thread changes; 15 colors