

Printed 2/6/2015



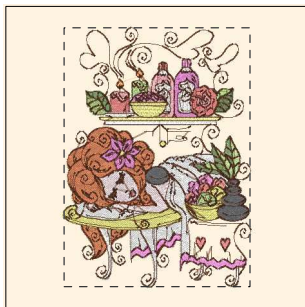
- 1. Pastel Coral (Sul-R:1016)
- 2. Peach (Sul-R:1019)
- 3. Lemon Yellow (Sul-R:1067)
- 4. Pale Yellow-Green (Sul-R:1063)
- 5. Bright White (Sul-R:1001)
- 6. Pale Pink (Sul-R:1120)
- 7. Cornflower Blue (Sul-R:1249)
- 8. Tawny Brown (Sul-R:1058)

Love Bath And Spa01-5x7.dst
5.05x7.11 inches; 28,039 stitches
8 thread changes; 8 colors



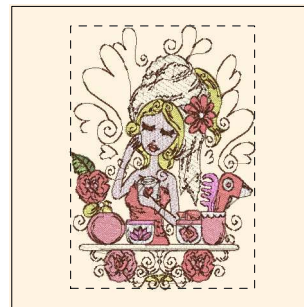
- 1. Pastel Coral (Sul-R:1016)
- 2. Pale Yellow-Green (Sul-R:1063)
- 3. Pale Pink (Sul-R:1120)
- 4. Cornflower Blue (Sul-R:1249)
- 5. Baby Blue Tint (Sul-R:1223)
- 6. Peach (Sul-R:1019)
- 7. Lemon Yellow (Sul-R:1067)
- 8. Bright White (Sul-R:1001)
- 9. Apricot (Sul-R:1239)
- 10. Bittersweet (Sul-R:1313)
- 11. Tawny Brown (Sul-R:1058)

Love Bath And Spa02-5x7.dst
4.87x6.66 inches; 36,635 stitches
11 thread changes; 11 colors



- 1. Pastel Coral (Sul-R:1016)
- 2. Peach (Sul-R:1019)
- 3. Chartreuse (Sul-R:1322)
- 4. Moss Green (Sul-R:630)
- 5. Bright White (Sul-R:1001)
- 6. Pale Pink (Sul-R:1120)
- 7. Bittersweet (Sul-R:1313)
- 8. Med. Steel Gray (Sul-R:1166)
- 9. Sweet Pink (Sul-R:1256)
- 10. Lemon Yellow (Sul-R:1067)
- 11. Apricot (Sul-R:1239)
- 12. Tawny Brown (Sul-R:1058)

Love Bath And Spa03-5x7.dst
4.85x6.76 inches; 33,370 stitches
12 thread changes; 12 colors



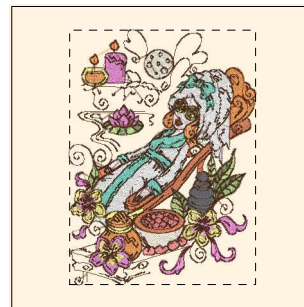
- 1. Bright White (Sul-R:1001)
- 2. Sweet Pink (Sul-R:1256)
- 3. Pale Yellow-Green (Sul-R:1063)
- 4. Pale Pink (Sul-R:1120)
- 5. Lemon Yellow (Sul-R:1067)
- 6. Pastel Coral (Sul-R:1016)
- 7. Peach (Sul-R:1019)
- 8. Chartreuse (Sul-R:1322)
- 9. Moss Green (Sul-R:630)
- 10. Tawny Brown (Sul-R:1058)

Love Bath And Spa04-5x7.dst
4.80x6.84 inches; 27,465 stitches
10 thread changes; 10 colors



- 1. Bright White (Sul-R:1001)
- 2. Pale Yellow-Green (Sul-R:1063)
- 3. Pale Pink (Sul-R:1120)
- 4. Lemon Yellow (Sul-R:1067)
- 5. Med. Steel Gray (Sul-R:1166)
- 6. Cornflower Blue (Sul-R:1249)
- 7. Peach (Sul-R:1019)
- 8. Baby Blue Tint (Sul-R:1223)
- 9. Lemon Yellow (Sul-R:1067)
- 10. Tawny Brown (Sul-R:1058)

Love Bath And Spa05-5x7.dst
4.34x6.87 inches; 28,931 stitches
10 thread changes; 9 colors



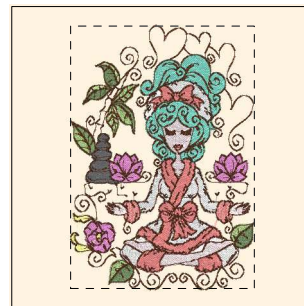
- 1. Bright White (Sul-R:1001)
- 2. Pale Yellow-Green (Sul-R:1063)
- 3. Med. Steel Gray (Sul-R:1166)
- 4. Bittersweet (Sul-R:1313)
- 5. Teal (Sul-R:1046)
- 6. Apricot (Sul-R:1239)
- 7. Sweet Pink (Sul-R:1256)
- 8. Pale Pink (Sul-R:1120)
- 9. Lemon Yellow (Sul-R:1067)
- 10. Peach (Sul-R:1019)
- 11. Chartreuse (Sul-R:1322)
- 12. Moss Green (Sul-R:630)
- 13. Tawny Brown (Sul-R:1058)

Love Bath And Spa06-5x7.dst
4.85x6.64 inches; 36,592 stitches
13 thread changes; 13 colors



- 1. Bright White (Sul-R:1001)
- 2. Pale Yellow-Green (Sul-R:1063)
- 3. Pale Pink (Sul-R:1120)
- 4. Pastel Coral (Sul-R:1016)
- 5. Peach (Sul-R:1019)
- 6. Med. Steel Gray (Sul-R:1166)
- 7. Cornflower Blue (Sul-R:1249)
- 8. Bittersweet (Sul-R:1313)
- 9. Tawny Brown (Sul-R:1058)

Love Bath And Spa07-5x7.dst
4.85x6.60 inches; 28,548 stitches
9 thread changes; 9 colors



- 1. Bright White (Sul-R:1001)
- 2. Sweet Pink (Sul-R:1256)
- 3. Pale Pink (Sul-R:1120)
- 4. Peach (Sul-R:1019)
- 5. Chartreuse (Sul-R:1322)
- 6. Moss Green (Sul-R:630)
- 7. Med. Steel Gray (Sul-R:1166)
- 8. Teal (Sul-R:1046)
- 9. Lemon Yellow (Sul-R:1067)
- 10. Peach (Sul-R:1019)
- 11. Tawny Brown (Sul-R:1058)

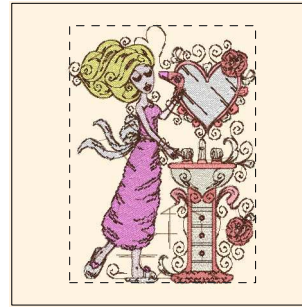
Love Bath And Spa08-5x7.dst
4.79x6.85 inches; 34,977 stitches
11 thread changes; 10 colors

Printed 2/6/2015



1. Bright White (Sul-R:1001)
2. Pale Yellow-Green (Sul-R:1063)
3. Pale Pink (Sul-R:1120)
4. Pastel Coral (Sul-R:1016)
5. Peach (Sul-R:1019)
6. Lemon Yellow (Sul-R:1067)
7. Chartreuse (Sul-R:1322)
8. Sweet Pink (Sul-R:1256)
9. Tawny Brown (Sul-R:1058)

Love Bath And Spa09-5x7.dst
4.85x6.57 inches; 37,147 stitches
9 thread changes; 9 colors



1. Bright White (Sul-R:1001)
2. Pale Yellow-Green (Sul-R:1063)
3. Pale Pink (Sul-R:1120)
4. Lemon Yellow (Sul-R:1067)
5. Peach (Sul-R:1019)
6. Pastel Coral (Sul-R:1016)
7. Peach (Sul-R:1019)
8. Sweet Pink (Sul-R:1256)
9. Tawny Brown (Sul-R:1058)

Love Bath And Spa10-5x7.dst
4.84x6.70 inches; 31,798 stitches
9 thread changes; 8 colors



1. Pale Yellow-Green (Sul-R:1063)
2. Pale Pink (Sul-R:1120)
3. Lemon Yellow (Sul-R:1067)
4. Peach (Sul-R:1019)
5. Chartreuse (Sul-R:1322)
6. Moss Green (Sul-R:630)
7. Med. Steel Gray (Sul-R:1166)
8. Bittersweet (Sul-R:1313)
9. Sweet Pink (Sul-R:1256)
10. Apricot (Sul-R:1239)
11. Tawny Brown (Sul-R:1058)

Love Bath And Spa11-5x7.dst
4.85x6.64 inches; 29,508 stitches
11 thread changes; 11 colors



1. Pale Yellow-Green (Sul-R:1063)
2. Pale Pink (Sul-R:1120)
3. Lemon Yellow (Sul-R:1067)
4. Pastel Coral (Sul-R:1016)
5. Peach (Sul-R:1019)
6. Cornflower Blue (Sul-R:1249)
7. Baby Blue Tint (Sul-R:1223)
8. Bittersweet (Sul-R:1313)
9. Sweet Pink (Sul-R:1256)
10. Bright White (Sul-R:1001)
11. Tawny Brown (Sul-R:1058)

Love Bath And Spa12-5x7.dst
4.80x6.84 inches; 37,363 stitches
11 thread changes; 11 colors