



- 1. Pale Pink (Sul-R:1120)
- 2. Tan (Sul-R:1126)
- 3. Bright White (Sul-R:1001)
- 4. Peach (Sul-R:1019)
- 5. Pastel Coral (Sul-R:1016)
- 6. (Sul-R:1326)
- 7. Deep Coral (Sul-R:1257)
- 8. Dk. Gray Khaki (Sul-R:1270)
- 9. Med. Tawny Tan (Sul-R:1056)

Art Noveau02b-5x7.dst

4.06x6.88 inches; 52,905 stitches
9 thread changes; 9 colors



- 1. Pale Pink (Sul-R:1120)
- 2. Peach (Sul-R:1019)
- 3. Gold (Sul-R:1070)
- 4. Pale Yellow (Sul-R:1061)
- 5. Pastel Coral (Sul-R:1016)
- 6. (Sul-R:1241)
- 7. (Sul-R:1260)
- 8. Med. Tawny Tan (Sul-R:1056)

Art Noveau03b-5x7.dst

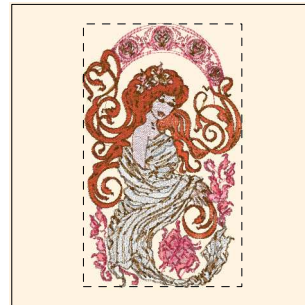
3.97x6.86 inches; 58,033 stitches
8 thread changes; 8 colors



- 1. Pale Pink (Sul-R:1120)
- 2. Peach (Sul-R:1019)
- 3. Gold (Sul-R:1070)
- 4. Periwinkle (Sul-R:1030)
- 5. Baby Blue (Sul-R:1028)
- 6. Bright White (Sul-R:1001)
- 7. Pastel Yellow-Green (Sul-R:1104)
- 8. (Sul-R:1282)
- 9. Pastel Coral (Sul-R:1016)
- 10. Med. Tawny Tan (Sul-R:1056)

Art Noveau04b-5x7.dst

3.84x6.88 inches; 45,850 stitches
10 thread changes; 10 colors



- 1. Bright White (Sul-R:1001)
- 2. Pale Pink (Sul-R:1120)
- 3. Pastel Coral (Sul-R:1016)
- 4. (Sul-R:1326)
- 5. Maple (Sul-R:1021)
- 6. Peach (Sul-R:1019)
- 7. Med. Tawny Tan (Sul-R:1056)
- 8. Deep Coral (Sul-R:1257)

Art Noveau05b-5x7.dst

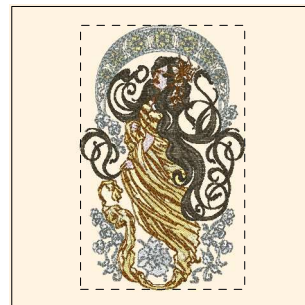
4.13x6.85 inches; 40,877 stitches
8 thread changes; 8 colors



- 1. Pale Pink (Sul-R:1120)
- 2. Gold (Sul-R:1070)
- 3. Lavender (Sul-R:1193)
- 4. Med. Orchid (Sul-R:1031)
- 5. Bright White (Sul-R:1001)
- 6. Peach (Sul-R:1019)
- 7. Pink (Sul-R:1121)
- 8. Med. Tawny Tan (Sul-R:1056)
- 9. Med. Purple (Sul-R:1032)

Art Noveau06b-5x7.dst

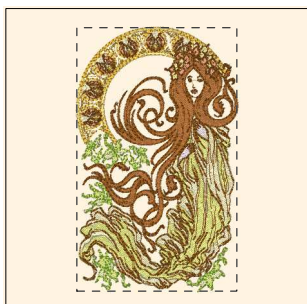
4.29x6.89 inches; 46,250 stitches
9 thread changes; 9 colors



- 1. Bright White (Sul-R:1001)
- 2. Pale Pink (Sul-R:1120)
- 3. Peach (Sul-R:1019)
- 4. Gold (Sul-R:1070)
- 5. Pale Yellow (Sul-R:1061)
- 6. (Sul-R:1326)
- 7. Pale Pink (Sul-R:1120)
- 8. Pale Yellow (Sul-R:1061)
- 9. Dark Brown (Sul-R:1130)
- 10. Med. Tawny Tan (Sul-R:1056)
- 11. Dk. Gray Khaki (Sul-R:1270)

Art Noveau07b-5x7.dst

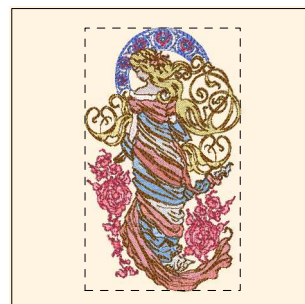
4.28x6.88 inches; 47,754 stitches
11 thread changes; 9 colors



- 1. Pale Pink (Sul-R:1120)
- 2. Gold (Sul-R:1070)
- 3. Lt. Avocado (Sul-R:1209)
- 4. Pale Yellow (Sul-R:1061)
- 5. Tan (Sul-R:1126)
- 6. Spice (Sul-R:562)
- 7. Peach (Sul-R:1019)
- 8. Med. Tawny Tan (Sul-R:1056)
- 9. (Sul-R:1260)
- 10. (Sul-R:1282)
- 11. Med. Tawny Tan (Sul-R:1056)

Art Noveau08b-5x7.dst

4.17x6.87 inches; 52,193 stitches
11 thread changes; 10 colors



- 1. Bright White (Sul-R:1001)
- 2. Pale Pink (Sul-R:1120)
- 3. Peach (Sul-R:1019)
- 4. Gold (Sul-R:1070)
- 5. Pastel Coral (Sul-R:1016)
- 6. Periwinkle (Sul-R:1030)
- 7. Baby Blue (Sul-R:1028)
- 8. Deep Coral (Sul-R:1257)
- 9. Pastel Coral (Sul-R:1016)
- 10. Dk. Periwinkle (Sul-R:1226)
- 11. Med. Tawny Tan (Sul-R:1056)

Art Noveau09b-5x7.dst

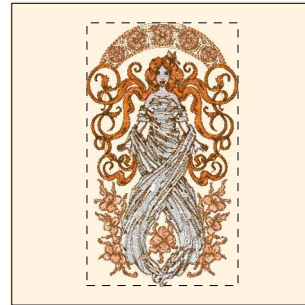
4.05x6.85 inches; 45,213 stitches
11 thread changes; 10 colors



- 1. Pale Pink (Sul-R:1120)
- 2. Gold (Sul-R:1070)
- 3. Tan (Sul-R:1126)
- 4. Spice (Sul-R:562)
- 5. Dusty Peach (Sul-R:619)
- 6. Peach (Sul-R:1019)
- 7. Pale Yellow (Sul-R:1061)
- 8. Med. Tawny Tan (Sul-R:1056)
- 9. (Sul-R:1260)

Art Nouveau10b-5x7.dst

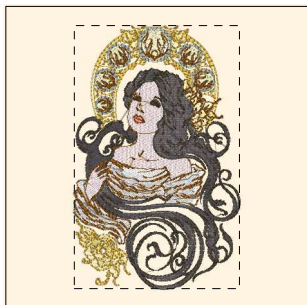
4.13x6.88 inches; 50,317 stitches
9 thread changes; 9 colors



- 1. Bright White (Sul-R:1001)
- 2. Pale Pink (Sul-R:1120)
- 3. (Sul-R:1326)
- 4. Dusty Peach (Sul-R:619)
- 5. Peach (Sul-R:1019)
- 6. Spice (Sul-R:562)
- 7. Cinnamon (Sul-R:568)
- 8. Med. Tawny Tan (Sul-R:1056)
- 9. Autumn Gold (Sul-R:523)

Art Nouveau11b-5x7.dst

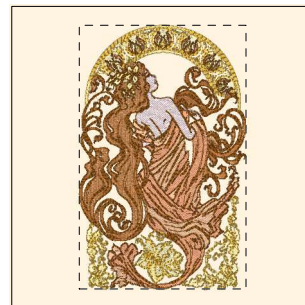
3.94x6.86 inches; 35,684 stitches
9 thread changes; 9 colors



- 1. Bright White (Sul-R:1001)
- 2. Pale Pink (Sul-R:1120)
- 3. (Sul-R:1241)
- 4. Gold (Sul-R:1070)
- 5. (Sul-R:1326)
- 6. Med. Tawny Tan (Sul-R:1056)
- 7. Dark Brown (Sul-R:1130)
- 8. Peach (Sul-R:1019)
- 9. Pale Yellow (Sul-R:1061)
- 10. (Sul-R:1260)
- 11. Dk. Gray Khaki (Sul-R:1270)
- 12. Med. Tawny Tan (Sul-R:1056)

Art Nouveau12b5x7.dst

4.31x6.86 inches; 46,856 stitches
12 thread changes; 11 colors



- 1. Pale Pink (Sul-R:1120)
- 2. Tan (Sul-R:1126)
- 3. Dusty Peach (Sul-R:619)
- 4. Spice (Sul-R:562)
- 5. Pale Yellow (Sul-R:1061)
- 6. Gold (Sul-R:1070)
- 7. Med. Tawny Tan (Sul-R:1056)
- 8. (Sul-R:1260)

Art Nouveau1b-5x7.dst

4.35x6.88 inches; 54,834 stitches
8 thread changes; 8 colors