

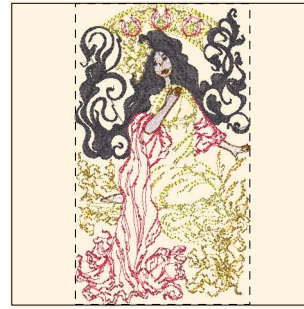
Printed 3/13/2015



- 1. Pale Pink (Sul-R:1120)
- 2. Tan (Sul-R:1126)
- 3. Peach (Sul-R:1019)
- 4. Pastel Coral (Sul-R:1016)
- 5. Med. Tawny Tan (Sul-R:1056)
- 6. Deep Coral (Sul-R:1257)
- 7. Dk. Gray Khaki (Sul-R:1270)

Art Noveau02a-8x8.dst

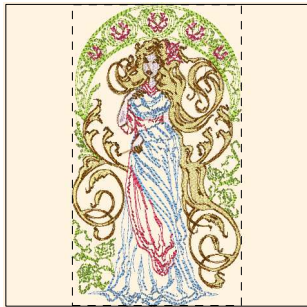
4.65x7.84 inches; 40,414 stitches
7 thread changes; 7 colors



- 1. Pale Pink (Sul-R:1120)
- 2. Peach (Sul-R:1019)
- 3. (Sul-R:1241)
- 4. (Sul-R:1260)
- 5. Med. Tawny Tan (Sul-R:1056)
- 6. Maize Yellow (Sul-R:1167)
- 7. Deep Coral (Sul-R:1257)

Art Noveau03a-8x8.dst

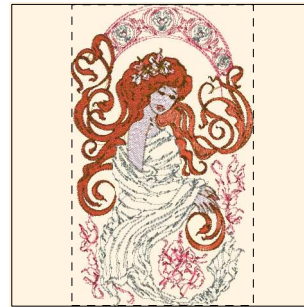
4.55x7.84 inches; 31,218 stitches
7 thread changes; 7 colors



- 1. Pale Pink (Sul-R:1120)
- 2. Peach (Sul-R:1019)
- 3. Gold (Sul-R:1070)
- 4. Baby Blue (Sul-R:1028)
- 5. Med. Tawny Tan (Sul-R:1056)
- 6. Pastel Yellow-Green (Sul-R:1104)
- 7. Deep Coral (Sul-R:1257)
- 8. (Sul-R:1282)
- 9. Dk. Maple (Sul-R:1158)

Art Noveau04a-8x8.dst

4.41x7.85 inches; 33,414 stitches
9 thread changes; 9 colors



- 1. Bright White (Sul-R:1001)
- 2. Pale Pink (Sul-R:1120)
- 3. Pastel Coral (Sul-R:1016)
- 4. Maple (Sul-R:1021)
- 5. Peach (Sul-R:1019)
- 6. Med. Tawny Tan (Sul-R:1056)
- 7. Deep Coral (Sul-R:1257)
- 8. Dk. Gray Khaki (Sul-R:1270)

Art Noveau05a-8x8.dst

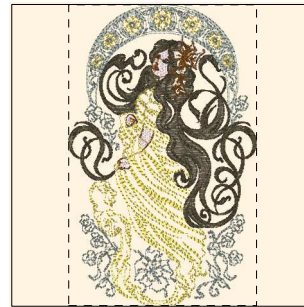
4.73x7.84 inches; 26,359 stitches
8 thread changes; 8 colors



- 1. Pale Pink (Sul-R:1120)
- 2. Gold (Sul-R:1070)
- 3. Lavender (Sul-R:1193)
- 4. Bright White (Sul-R:1001)
- 5. Peach (Sul-R:1019)
- 6. Pink (Sul-R:1121)
- 7. Med. Tawny Tan (Sul-R:1056)
- 8. Maize Yellow (Sul-R:1167)
- 9. Med. Purple (Sul-R:1032)

Art Noveau06a-8x8.dst

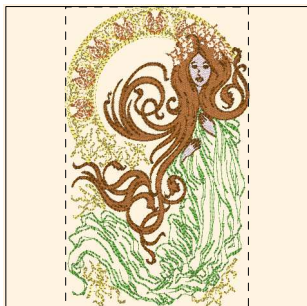
4.91x7.85 inches; 41,574 stitches
9 thread changes; 9 colors



- 1. Bright White (Sul-R:1001)
- 2. Pale Pink (Sul-R:1120)
- 3. Peach (Sul-R:1019)
- 4. Gold (Sul-R:1070)
- 5. (Sul-R:1326)
- 6. Dark Brown (Sul-R:1130)
- 7. Med. Tawny Tan (Sul-R:1056)
- 8. Maize Yellow (Sul-R:1167)
- 9. Dk. Gray Khaki (Sul-R:1270)

Art Noveau07a-8x8.dst

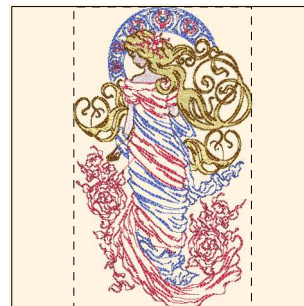
4.91x7.85 inches; 33,160 stitches
9 thread changes; 9 colors



- 1. Pale Pink (Sul-R:1120)
- 2. Tan (Sul-R:1126)
- 3. Peach (Sul-R:1019)
- 4. Med. Tawny Tan (Sul-R:1056)
- 5. Maize Yellow (Sul-R:1167)
- 6. Nile Green (Sul-R:1274)
- 7. Apricot (Sul-R:1239)
- 8. Med. Tawny Tan (Sul-R:1056)

Art Noveau08a-8x8.dst

4.77x7.85 inches; 32,586 stitches
8 thread changes; 7 colors



- 1. Pale Pink (Sul-R:1120)
- 2. Peach (Sul-R:1019)
- 3. Gold (Sul-R:1070)
- 4. Deep Coral (Sul-R:1257)
- 5. Dk. Periwinkle (Sul-R:1226)
- 6. Med. Tawny Tan (Sul-R:1056)

Art Noveau09a-8x8.dst

4.64x7.85 inches; 27,838 stitches
6 thread changes; 6 colors

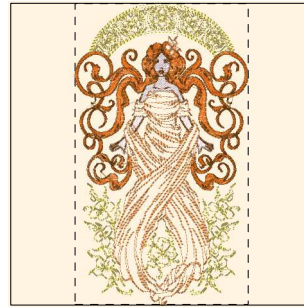
Printed 3/13/2015



- 1. Pale Pink (Sul-R:1120)
- 2. Tan (Sul-R:1126)
- 3. Peach (Sul-R:1019)
- 4. Med. Tawny Tan (Sul-R:1056)
- 5. Maize Yellow (Sul-R:1167)
- 6. Apricot (Sul-R:1239)

Art Noveau10a-8x8.dst

4.72x7.85 inches; 42,802 stitches
6 thread changes; 6 colors



- 1. Bright White (Sul-R:1001)
- 2. Pale Pink (Sul-R:1120)
- 3. Peach (Sul-R:1019)
- 4. Cinnamon (Sul-R:568)
- 5. Med. Tawny Tan (Sul-R:1056)
- 6. Maize Yellow (Sul-R:1167)
- 7. Apricot (Sul-R:1239)

Art Noveau11a-8x8.dst

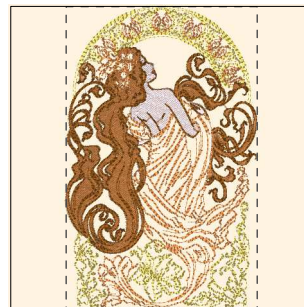
4.51x7.85 inches; 21,022 stitches
7 thread changes; 7 colors



- 1. Bright White (Sul-R:1001)
- 2. Pale Pink (Sul-R:1120)
- 3. (Sul-R:1241)
- 4. Med. Tawny Tan (Sul-R:1056)
- 5. Dark Brown (Sul-R:1130)
- 6. Peach (Sul-R:1019)
- 7. Dk. Gray Khaki (Sul-R:1270)
- 8. Maize Yellow (Sul-R:1167)
- 9. Med. Tawny Tan (Sul-R:1056)

Art Noveau12a-8x8.dst

4.94x7.84 inches; 36,657 stitches
9 thread changes; 8 colors



- 1. Pale Pink (Sul-R:1120)
- 2. Tan (Sul-R:1126)
- 3. Spice (Sul-R:562)
- 4. Med. Tawny Tan (Sul-R:1056)
- 5. Apricot (Sul-R:1239)
- 6. Maize Yellow (Sul-R:1167)

Art Noveau1a-8x8.dst

4.98x7.85 inches; 38,582 stitches
6 thread changes; 6 colors