

Printed 5/15/2015



1. Bright White (Sul-R:1001)
2. Pastel Coral (Sul-R:1016)
3. Peach (Sul-R:1019)
4. Pale Pink (Sul-R:1120)
5. Cream (Sul-R:1022)
6. Toast (Sul-R:1266)
7. Sweet Pink (Sul-R:1256)
8. Bittersweet (Sul-R:1313)
9. Bright White (Sul-R:1001)
10. Lemon Yellow (Sul-R:1067)
11. Chartreuse (Sul-R:1322)
12. Tawny Brown (Sul-R:1058)

Summertime Girls Playing01-8x8.dst

5.87x7.75 inches; 48,468 stitches
12 thread changes; 11 colors



1. Pastel Coral (Sul-R:1016)
2. Peach (Sul-R:1019)
3. Pale Pink (Sul-R:1120)
4. Cream (Sul-R:1022)
5. Lemon Yellow (Sul-R:1067)
6. Med. Steel Gray (Sul-R:1166)
7. Bright White (Sul-R:1001)
8. Pale Pink (Sul-R:1120)
9. Cream (Sul-R:1022)
10. Toast (Sul-R:1266)
11. Bittersweet (Sul-R:1313)
12. Chartreuse (Sul-R:1322)
13. Tawny Brown (Sul-R:1058)

Summertime Girls Playing02-8x8.dst

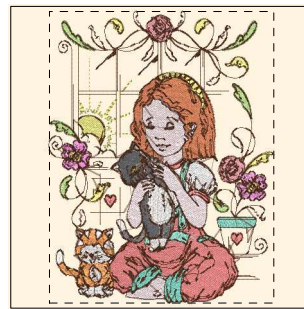
5.35x7.85 inches; 39,948 stitches
13 thread changes; 11 colors



1. Chartreuse (Sul-R:1322)
2. Bright White (Sul-R:1001)
3. Pastel Coral (Sul-R:1016)
4. Peach (Sul-R:1019)
5. Pale Pink (Sul-R:1120)
6. Cream (Sul-R:1022)
7. Med. Steel Gray (Sul-R:1166)
8. Cream (Sul-R:1022)
9. Lemon Yellow (Sul-R:1067)
10. Toast (Sul-R:1266)
11. Bittersweet (Sul-R:1313)
12. Tawny Brown (Sul-R:1058)
13. Med. Steel Gray (Sul-R:1166)

Summertime Girls Playing03-8x8.dst

6.75x7.86 inches; 46,847 stitches
13 thread changes; 11 colors



1. Bittersweet (Sul-R:1313)
2. Pale Pink (Sul-R:1120)
3. Med. Steel Gray (Sul-R:1166)
4. Bright White (Sul-R:1001)
5. Pastel Coral (Sul-R:1016)
6. Peach (Sul-R:1019)
7. Lemon Yellow (Sul-R:1067)
8. Sweet Pink (Sul-R:1256)
9. Chartreuse (Sul-R:1322)
10. Teal (Sul-R:1046)
11. Apricot (Sul-R:1239)
12. Tawny Brown (Sul-R:1058)

Summertime Girls Playing04-8x8.dst

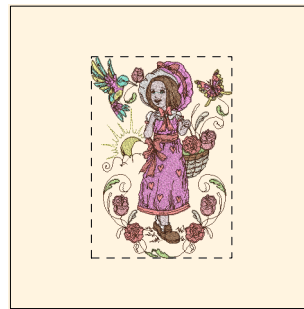
5.86x7.60 inches; 42,552 stitches
12 thread changes; 12 colors



1. Bright White (Sul-R:1001)
2. Peach (Sul-R:1019)
3. Pale Pink (Sul-R:1120)
4. Cream (Sul-R:1022)
5. Sweet Pink (Sul-R:1256)
6. Bittersweet (Sul-R:1313)
7. Apricot (Sul-R:1239)
8. Bright White (Sul-R:1001)
9. Lemon Yellow (Sul-R:1067)
10. Tawny Brown (Sul-R:1058)
11. Chartreuse (Sul-R:1322)
12. Tawny Brown (Sul-R:1058)

Summertime Girls Playing05-8x8.dst

6.65x7.86 inches; 53,358 stitches
12 thread changes; 10 colors



1. Pastel Coral (Sul-R:1016)
2. Pale Pink (Sul-R:1120)
3. Cream (Sul-R:1022)
4. Lemon Yellow (Sul-R:1067)
5. Peach (Sul-R:1019)
6. Sweet Pink (Sul-R:1256)
7. Bright White (Sul-R:1001)
8. Toast (Sul-R:1266)
9. Tawny Brown (Sul-R:1058)
10. Chartreuse (Sul-R:1322)
11. Teal (Sul-R:1046)
12. Tawny Brown (Sul-R:1058)

Summertime Girls Playing06-8x8.dst

5.49x7.88 inches; 41,879 stitches
12 thread changes; 11 colors



1. Bright White (Sul-R:1001)
2. Pale Pink (Sul-R:1120)
3. Cream (Sul-R:1022)
4. Lemon Yellow (Sul-R:1067)
5. Bittersweet (Sul-R:1313)
6. Cornflower Blue (Sul-R:1249)
7. Bright White (Sul-R:1001)
8. Peach (Sul-R:1019)
9. Pale Pink (Sul-R:1120)
10. Cream (Sul-R:1022)
11. Sweet Pink (Sul-R:1256)
12. Tawny Brown (Sul-R:1058)
13. Chartreuse (Sul-R:1322)
14. Cornflower Blue (Sul-R:1249)
15. Tawny Brown (Sul-R:1058)

Summertime Girls Playing07-8x8.dst

5.74x7.84 inches; 40,056 stitches
15 thread changes; 10 colors



1. Bright White (Sul-R:1001)
2. Pale Pink (Sul-R:1120)
3. Cornflower Blue (Sul-R:1249)
4. Peach (Sul-R:1019)
5. Cream (Sul-R:1022)
6. Lemon Yellow (Sul-R:1067)
7. Bittersweet (Sul-R:1313)
8. Tawny Brown (Sul-R:1058)
9. Apricot (Sul-R:1239)
10. Chartreuse (Sul-R:1322)
11. Tawny Brown (Sul-R:1058)

Summertime Girls Playing08-8x8.dst

7.57x7.87 inches; 40,528 stitches
11 thread changes; 10 colors

Printed 5/15/2015



- 1. Bright White (Sul-R:1001)
- 2. Pastel Coral (Sul-R:1016)
- 3. Pale Pink (Sul-R:1120)
- 4. Cream (Sul-R:1022)
- 5. Lemon Yellow (Sul-R:1067)
- 6. Chartreuse (Sul-R:1322)
- 7. Med. Steel Gray (Sul-R:1166)
- 8. Apricot (Sul-R:1239)
- 9. Bright White (Sul-R:1001)
- 10. Peach (Sul-R:1019)
- 11. Teal (Sul-R:1046)
- 12. Tawny Brown (Sul-R:1058)

Summertime Girls Playing09-8x8.dst

5.85x7.26 inches; 43,622 stitches
12 thread changes; 11 colors



- 1. Pale Pink (Sul-R:1120)
- 2. Lemon Yellow (Sul-R:1067)
- 3. Sweet Pink (Sul-R:1256)
- 4. Bittersweet (Sul-R:1313)
- 5. Sweet Pink (Sul-R:1256)
- 6. Bright White (Sul-R:1001)
- 7. Pastel Coral (Sul-R:1016)
- 8. Peach (Sul-R:1019)
- 9. Cream (Sul-R:1022)
- 10. Bittersweet (Sul-R:1313)
- 11. Chartreuse (Sul-R:1322)
- 12. Med. Steel Gray (Sul-R:1166)
- 13. Tawny Brown (Sul-R:1058)
- 14. Bright White (Sul-R:1001)

Summertime Girls Playing10-8x8.dst

7.88x7.52 inches; 46,486 stitches
14 thread changes; 11 colors



- 1. Bright White (Sul-R:1001)
- 2. Pastel Coral (Sul-R:1016)
- 3. Peach (Sul-R:1019)
- 4. Pale Pink (Sul-R:1120)
- 5. Cream (Sul-R:1022)
- 6. Lemon Yellow (Sul-R:1067)
- 7. Chartreuse (Sul-R:1322)
- 8. Pale Pink (Sul-R:1120)
- 9. Cream (Sul-R:1022)
- 10. Bittersweet (Sul-R:1313)
- 11. Med. Steel Gray (Sul-R:1166)
- 12. Cornflower Blue (Sul-R:1249)
- 13. Tawny Brown (Sul-R:1058)

Summertime Girls Playing11-8x8.dst

5.66x7.85 inches; 41,658 stitches
13 thread changes; 11 colors



- 1. Bright White (Sul-R:1001)
- 2. Pale Pink (Sul-R:1120)
- 3. Cream (Sul-R:1022)
- 4. Lemon Yellow (Sul-R:1067)
- 5. Bittersweet (Sul-R:1313)
- 6. Chartreuse (Sul-R:1322)
- 7. Apricot (Sul-R:1239)
- 8. Bright White (Sul-R:1001)
- 9. Sweet Pink (Sul-R:1256)
- 10. Peach (Sul-R:1019)
- 11. Toast (Sul-R:1266)
- 12. Med. Steel Gray (Sul-R:1166)
- 13. Apricot (Sul-R:1239)
- 14. Tawny Brown (Sul-R:1058)

Summertime Girls Playing12-8x8.dst

7.20x7.85 inches; 55,314 stitches
14 thread changes; 12 colors