

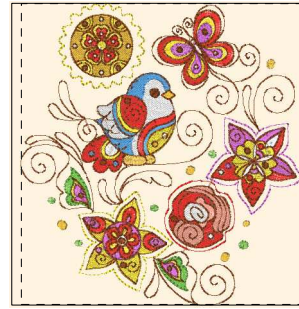
Printed 5/1/2015



- 1. (Sul-R:1260)
- 2. Bright White (Sul-R:1001)
- 3. Peacock Blue (Sul-R:1134)
- 4. Sun Yellow (Sul-R:1124)
- 5. Silver Gray (Sul-R:1218)
- 6. Nile Green (Sul-R:1274)
- 7. Poppy (Sul-R:1317)
- 8. Dk. Maple (Sul-R:1158)

Abstract01-8x8.dst

7.17x7.84 inches; 39,596 stitches
8 thread changes; 8 colors



- 1. Bright White (Sul-R:1001)
- 2. Poppy (Sul-R:1317)
- 3. Salmon Peach (Sul-R:1259)
- 4. Peacock Blue (Sul-R:1134)
- 5. Sun Yellow (Sul-R:1124)
- 6. Bright White (Sul-R:1001)
- 7. (Sul-R:1260)
- 8. Dk. Orchid (Sul-R:1033)
- 9. Nile Green (Sul-R:1274)
- 10. Poppy (Sul-R:1317)
- 11. Dk. Maple (Sul-R:1158)

Abstract02-8x8.dst

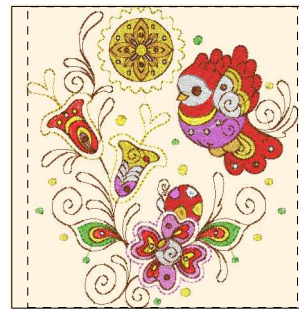
7.37x7.84 inches; 38,338 stitches
11 thread changes; 9 colors



- 1. Bright White (Sul-R:1001)
- 2. (Sul-R:1260)
- 3. Sun Yellow (Sul-R:1124)
- 4. Poppy (Sul-R:1317)
- 5. Sun Yellow (Sul-R:1124)
- 6. Dk. Orchid (Sul-R:1033)
- 7. Cornflower Blue (Sul-R:1249)
- 8. (Sul-R:1260)
- 9. Silver Gray (Sul-R:1218)
- 10. Nile Green (Sul-R:1274)
- 11. Salmon Peach (Sul-R:1259)
- 12. Dk. Orchid (Sul-R:1033)
- 13. Cornflower Blue (Sul-R:1249)
- 14. Dk. Maple (Sul-R:1158)
- 15. Bright White (Sul-R:1001)

Abstract03-8x8.dst

7.33x7.84 inches; 44,364 stitches
15 thread changes; 10 colors



- 1. Sun Yellow (Sul-R:1124)
- 2. (Sul-R:1260)
- 3. Poppy (Sul-R:1317)
- 4. Dk. Orchid (Sul-R:1033)
- 5. Sweet Pink (Sul-R:1256)
- 6. Bright White (Sul-R:1001)
- 7. (Sul-R:1260)
- 8. Sun Yellow (Sul-R:1124)
- 9. Nile Green (Sul-R:1274)
- 10. Poppy (Sul-R:1317)
- 11. Dk. Maple (Sul-R:1158)

Abstract04-8x8.dst

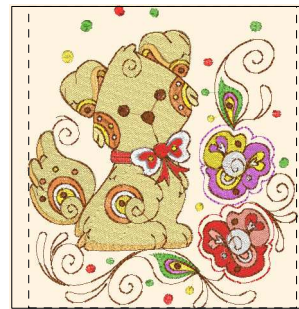
7.04x7.84 inches; 31,254 stitches
11 thread changes; 8 colors



- 1. Bright White (Sul-R:1001)
- 2. Sun Yellow (Sul-R:1124)
- 3. Poppy (Sul-R:1317)
- 4. Dk. Orchid (Sul-R:1033)
- 5. Cornflower Blue (Sul-R:1249)
- 6. Autumn Gold (Sul-R:523)
- 7. Bright White (Sul-R:1001)
- 8. (Sul-R:1260)
- 9. Silver Gray (Sul-R:1218)
- 10. Nile Green (Sul-R:1274)
- 11. Salmon Peach (Sul-R:1259)
- 12. Dk. Maple (Sul-R:1158)

Abstract05-8x8.dst

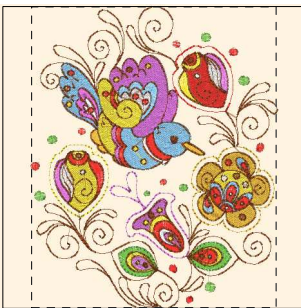
6.74x7.84 inches; 44,391 stitches
12 thread changes; 11 colors



- 1. Poppy (Sul-R:1317)
- 2. Dk. Orchid (Sul-R:1033)
- 3. Autumn Gold (Sul-R:523)
- 4. Gold (Sul-R:1070)
- 5. Bright White (Sul-R:1001)
- 6. Sun Yellow (Sul-R:1124)
- 7. Nile Green (Sul-R:1274)
- 8. Salmon Peach (Sul-R:1259)
- 9. Autumn Gold (Sul-R:523)
- 10. Cornsilk (Sul-R:502)
- 11. Dk. Maple (Sul-R:1158)

Abstract06--8x8.dst

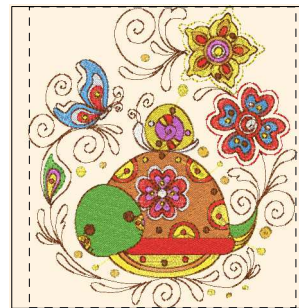
6.98x7.86 inches; 38,757 stitches
11 thread changes; 10 colors



- 1. Bright White (Sul-R:1001)
- 2. Dk. Orchid (Sul-R:1033)
- 3. Sun Yellow (Sul-R:1124)
- 4. Cornflower Blue (Sul-R:1249)
- 5. (Sul-R:1260)
- 6. Poppy (Sul-R:1317)
- 7. Bright White (Sul-R:1001)
- 8. Dk. Orchid (Sul-R:1033)
- 9. Sun Yellow (Sul-R:1124)
- 10. Cornflower Blue (Sul-R:1249)
- 11. (Sul-R:1260)
- 12. Poppy (Sul-R:1317)
- 13. Nile Green (Sul-R:1274)
- 14. Dk. Maple (Sul-R:1158)
- 15. Dk. Orchid (Sul-R:1033)
- 16. Sun Yellow (Sul-R:1124)
- 17. (Sul-R:1260)
- 18. Poppy (Sul-R:1317)
- 19. Nile Green (Sul-R:1274)
- 20. Dk. Maple (Sul-R:1158)

Abstract07-8x8.dst

6.38x7.84 inches; 31,078 stitches
20 thread changes; 8 colors



- 1. Bright White (Sul-R:1001)
- 2. Sun Yellow (Sul-R:1124)
- 3. (Sul-R:1260)
- 4. Poppy (Sul-R:1317)
- 5. Nile Green (Sul-R:1274)
- 6. Autumn Gold (Sul-R:523)
- 7. Peacock Blue (Sul-R:1134)
- 8. Bright White (Sul-R:1001)
- 9. Dk. Orchid (Sul-R:1033)
- 10. Sun Yellow (Sul-R:1124)
- 11. Dk. Maple (Sul-R:1158)

Abstract08-8x8.dst

6.95x7.85 inches; 38,279 stitches
11 thread changes; 9 colors

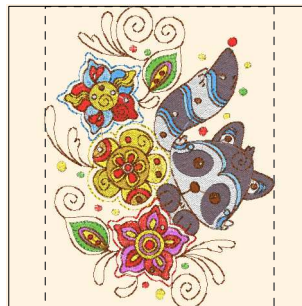
Printed 5/1/2015



- 1. Bright White (Sul-R:1001)
- 2. Dk. Orchid (Sul-R:1033)
- 3. Sun Yellow (Sul-R:1124)
- 4. Cornflower Blue (Sul-R:1249)
- 5. (Sul-R:1260)
- 6. Nile Green (Sul-R:1274)
- 7. Peacock Blue (Sul-R:1134)
- 8. Poppy (Sul-R:1317)
- 9. Bright White (Sul-R:1001)
- 10. Sun Yellow (Sul-R:1124)
- 11. Dk. Maple (Sul-R:1158)

Abstract09-8x8.dst

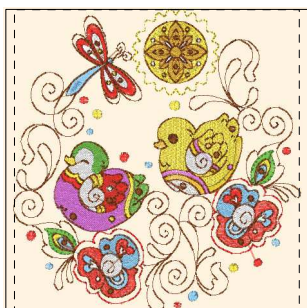
5.86x6.75 inches; 29,437 stitches
11 thread changes; 9 colors



- 1. Bright White (Sul-R:1001)
- 2. Dk. Orchid (Sul-R:1033)
- 3. Sun Yellow (Sul-R:1124)
- 4. (Sul-R:1260)
- 5. Poppy (Sul-R:1317)
- 6. Dk. Taupe (Sul-R:1179)
- 7. Bright White (Sul-R:1001)
- 8. Sun Yellow (Sul-R:1124)
- 9. Cornflower Blue (Sul-R:1249)
- 10. Poppy (Sul-R:1317)
- 11. Nile Green (Sul-R:1274)
- 12. Peacock Blue (Sul-R:1134)
- 13. Dk. Maple (Sul-R:1158)

Abstract10-8x8.dst

5.97x7.84 inches; 33,327 stitches
13 thread changes; 10 colors



- 1. Bright White (Sul-R:1001)
- 2. Dk. Orchid (Sul-R:1033)
- 3. Sun Yellow (Sul-R:1124)
- 4. Cornflower Blue (Sul-R:1249)
- 5. (Sul-R:1260)
- 6. Poppy (Sul-R:1317)
- 7. Nile Green (Sul-R:1274)
- 8. Bright White (Sul-R:1001)
- 9. Poppy (Sul-R:1317)
- 10. (Sul-R:1243)
- 11. Dk. Maple (Sul-R:1158)

Abstract11-8x8.dst

7.43x7.84 inches; 34,788 stitches
11 thread changes; 9 colors



- 1. Dk. Orchid (Sul-R:1033)
- 2. Sun Yellow (Sul-R:1124)
- 3. (Sul-R:1260)
- 4. Autumn Gold (Sul-R:523)
- 5. Bright White (Sul-R:1001)
- 6. Dk. Orchid (Sul-R:1033)
- 7. Sun Yellow (Sul-R:1124)
- 8. Poppy (Sul-R:1317)
- 9. Nile Green (Sul-R:1274)
- 10. Tan (Sul-R:1126)
- 11. Dk. Maple (Sul-R:1158)

Abstract12-8x8.dst

6.78x7.86 inches; 49,744 stitches
11 thread changes; 9 colors