

Printed 12/2/2016



- 1. Charcoal Gray (Sul-R:1220)
- 2. Mimosa Yellow (Sul-R:1187)
- 3. Poppy (Sul-R:1317)
- 4. Dusty Peach (Sul-R:619)
- 5. Blackberry (Sul-R:1215)
- 6. Bright White (Sul-R:1001)
- 7. Pastel Coral (Sul-R:1016)
- 8. Tan (Sul-R:1126)
- 9. Charcoal Gray (Sul-R:1220)
- 10. Med. Aqua (Sul-R:640)
- 11. Chartreuse (Sul-R:1322)
- 12. Blackberry (Sul-R:1215)

Classic Christmas Pets001-5x7.dst

4.80x6.58 inches; 26,357 stitches
12 thread changes; 10 colors



- 1. Dk. Tawny Brown (Sul-R:1059)
- 2. Gray (Sul-R:1219)
- 3. Med. Dk. Khaki (Sul-R:1040)
- 4. Pastel Mauve (Sul-R:1113)
- 5. Lipstick (Sul-R:561)
- 6. Bright White (Sul-R:1001)
- 7. Dk. Tawny Brown (Sul-R:1059)
- 8. Sun Yellow (Sul-R:1124)
- 9. Gray Khaki (Sul-R:1321)
- 10. Chartreuse (Sul-R:1322)
- 11. Grass Green (Sul-R:1049)
- 12. Taupe (Sul-R:1213)
- 13. Lipstick (Sul-R:561)

Classic Christmas Pets002-5x7.dst

4.80x6.58 inches; 26,449 stitches
13 thread changes; 11 colors



- 1. Pastel Mauve (Sul-R:1113)
- 2. Med. Dk. Khaki (Sul-R:1040)
- 3. Lipstick (Sul-R:561)
- 4. Xmas Red (Sul-R:1147)
- 5. Deep Ecru (Sul-R:1149)
- 6. Bright White (Sul-R:1001)
- 7. Blue Black (Sul-R:1182)
- 8. Dark Brown (Sul-R:1130)
- 9. Gray Khaki (Sul-R:1321)
- 10. Chartreuse (Sul-R:1322)
- 11. Grass Green (Sul-R:1049)
- 12. Lt. Khaki (Sul-R:1211)
- 13. Deep Ecru (Sul-R:1149)
- 14. Taupe (Sul-R:1213)
- 15. Dk. Ecru (Sul-R:1128)
- 16. Sun Yellow (Sul-R:1124)

Classic Christmas Pets003-5x7.dst

4.80x6.19 inches; 22,113 stitches
16 thread changes; 15 colors



- 1. Light Gray Khaki (Sul-R:1268)
- 2. Med. Dk. Khaki (Sul-R:1040)
- 3. Lipstick (Sul-R:561)
- 4. Bright White (Sul-R:1001)
- 5. Blackberry (Sul-R:1215)
- 6. (Sul-R:1320)
- 7. (Sul-R:610)
- 8. Gray Khaki (Sul-R:1321)
- 9. Lipstick (Sul-R:561)
- 10. Grass Green (Sul-R:1049)
- 11. Sun Yellow (Sul-R:1124)

Classic Christmas Pets004-5x7.dst

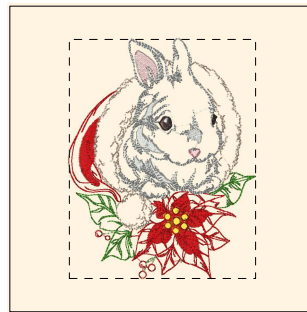
4.78x6.80 inches; 26,928 stitches
11 thread changes; 10 colors



- 1. Pastel Mauve (Sul-R:1113)
- 2. Lipstick (Sul-R:561)
- 3. (Sul-R:610)
- 4. Bright White (Sul-R:1001)
- 5. Willow Green (Sul-R:1279)
- 6. Blackberry (Sul-R:1215)
- 7. Grass Green (Sul-R:1049)
- 8. Sun Yellow (Sul-R:1124)
- 9. Hedge Green (Sul-R:1272)
- 10. Blackberry (Sul-R:1215)
- 11. Pastel Coral (Sul-R:1016)
- 12. Deep Ecru (Sul-R:1149)
- 13. (Sul-R:1320)
- 14. Gray Khaki (Sul-R:1321)
- 15. Lipstick (Sul-R:561)
- 16. Chartreuse (Sul-R:1322)

Classic Christmas Pets005-5x7.dst

4.80x6.44 inches; 24,232 stitches
16 thread changes; 14 colors



- 1. Blackberry (Sul-R:1215)
- 2. Light Gray Khaki (Sul-R:1268)
- 3. Pastel Mauve (Sul-R:1113)
- 4. Lipstick (Sul-R:561)
- 5. Bright White (Sul-R:1001)
- 6. (Sul-R:1269)
- 7. Blackberry (Sul-R:1215)
- 8. Light Gray Khaki (Sul-R:1268)
- 9. Sun Yellow (Sul-R:1124)
- 10. Pastel Coral (Sul-R:1016)
- 11. Deep Ecru (Sul-R:1149)
- 12. Gray Khaki (Sul-R:1321)
- 13. Lipstick (Sul-R:561)
- 14. Chartreuse (Sul-R:1322)
- 15. Grass Green (Sul-R:1049)

Classic Christmas Pets006-5x7.dst

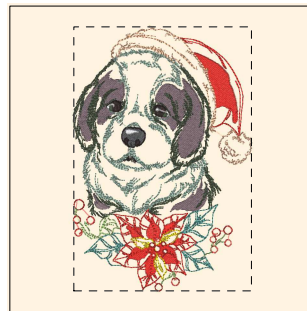
4.80x6.15 inches; 20,564 stitches
15 thread changes; 12 colors



- 1. Poppy (Sul-R:1317)
- 2. Bright White (Sul-R:1001)
- 3. Blackberry (Sul-R:1215)
- 4. Bright White (Sul-R:1001)
- 5. Avocado (Sul-R:1177)
- 6. Chartreuse (Sul-R:1322)
- 7. Med. Peach (Sul-R:1015)
- 8. Mimosa Yellow (Sul-R:1187)
- 9. Poppy (Sul-R:1317)
- 10. Pastel Coral (Sul-R:1016)
- 11. Blackberry (Sul-R:1215)
- 12. Med. Aqua (Sul-R:640)
- 13. Sea Foam Green (Sul-R:1207)
- 14. Pastel Jade (Sul-R:1204)
- 15. Chartreuse (Sul-R:1322)
- 16. Dusty Peach (Sul-R:619)

Classic Christmas Pets007-5x7.dst

4.80x6.06 inches; 27,190 stitches
16 thread changes; 12 colors

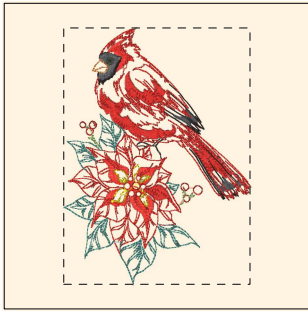


- 1. Poppy (Sul-R:1317)
- 2. Dk. Taupe (Sul-R:1179)
- 3. Charcoal Gray (Sul-R:1220)
- 4. Mimosa Yellow (Sul-R:1187)
- 5. Blackberry (Sul-R:1215)
- 6. Bright White (Sul-R:1001)
- 7. Poppy (Sul-R:1317)
- 8. Bright White (Sul-R:1001)
- 9. Med. Aqua (Sul-R:640)
- 10. Sea Foam Green (Sul-R:1207)
- 11. Chartreuse (Sul-R:1322)
- 12. Hedge Green (Sul-R:1272)
- 13. Dusty Peach (Sul-R:619)

Classic Christmas Pets008-5x7.dst

4.58x6.80 inches; 28,269 stitches
13 thread changes; 11 colors

Printed 12/2/2016



- 1. Poppy (Sul-R:1317)
- 2. Blackberry (Sul-R:1215)
- 3. Charcoal Gray (Sul-R:1220)
- 4. Hedge Green (Sul-R:1272)
- 5. Mimosa Yellow (Sul-R:1187)
- 6. Poppy (Sul-R:1317)
- 7. Med. Aqua (Sul-R:640)
- 8. Chartreuse (Sul-R:1322)
- 9. Apricot (Sul-R:1239)

Classic Christmas Pets009-5x7.dst

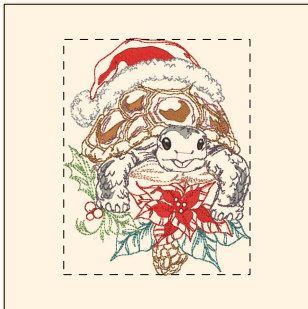
4.80x6.60 inches; 19,765 stitches
9 thread changes; 8 colors



- 1. Poppy (Sul-R:1317)
- 2. Charcoal Gray (Sul-R:1220)
- 3. Med. Aqua (Sul-R:640)
- 4. Primrose (Sul-R:1066)
- 5. Tan (Sul-R:1126)
- 6. Blackberry (Sul-R:1215)
- 7. Bright White (Sul-R:1001)
- 8. Mimosa Yellow (Sul-R:1187)
- 9. Tan (Sul-R:1126)
- 10. Blackberry (Sul-R:1215)
- 11. Dk. Whisper Gray (Sul-R:1327)
- 12. Chartreuse (Sul-R:1322)
- 13. Apricot (Sul-R:1239)
- 14. Dusty Peach (Sul-R:619)

Classic Christmas Pets010-5x7.dst

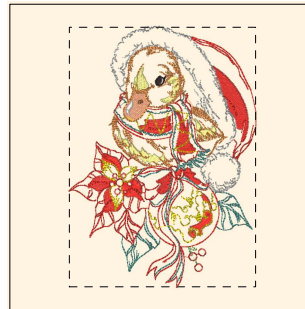
4.69x6.80 inches; 25,643 stitches
14 thread changes; 12 colors



- 1. Poppy (Sul-R:1317)
- 2. Blackberry (Sul-R:1215)
- 3. Bright White (Sul-R:1001)
- 4. Putty (Sul-R:1508)
- 5. Tan (Sul-R:1126)
- 6. Blackberry (Sul-R:1215)
- 7. Med. Aqua (Sul-R:640)
- 8. Dk. Whisper Gray (Sul-R:1327)
- 9. Chartreuse (Sul-R:1322)
- 10. Dk. Taupe (Sul-R:1179)
- 11. Dewberry (Sul-R:1304)
- 12. Dusty Peach (Sul-R:619)

Classic Christmas Pets011-5x7.dst

4.80x6.06 inches; 22,034 stitches
12 thread changes; 11 colors



- 1. Poppy (Sul-R:1317)
- 2. Lemon Yellow (Sul-R:1067)
- 3. Spice (Sul-R:562)
- 4. Tan (Sul-R:1126)
- 5. Blackberry (Sul-R:1215)
- 6. Bright White (Sul-R:1001)
- 7. Dk. Whisper Gray (Sul-R:1327)
- 8. Poppy (Sul-R:1317)
- 9. Mimosa Yellow (Sul-R:1187)
- 10. Blackberry (Sul-R:1215)
- 11. Med. Aqua (Sul-R:640)
- 12. Chartreuse (Sul-R:1322)
- 13. Apricot (Sul-R:1239)

Classic Christmas Pets012-5x7.dst

4.80x6.69 inches; 21,842 stitches
13 thread changes; 11 colors